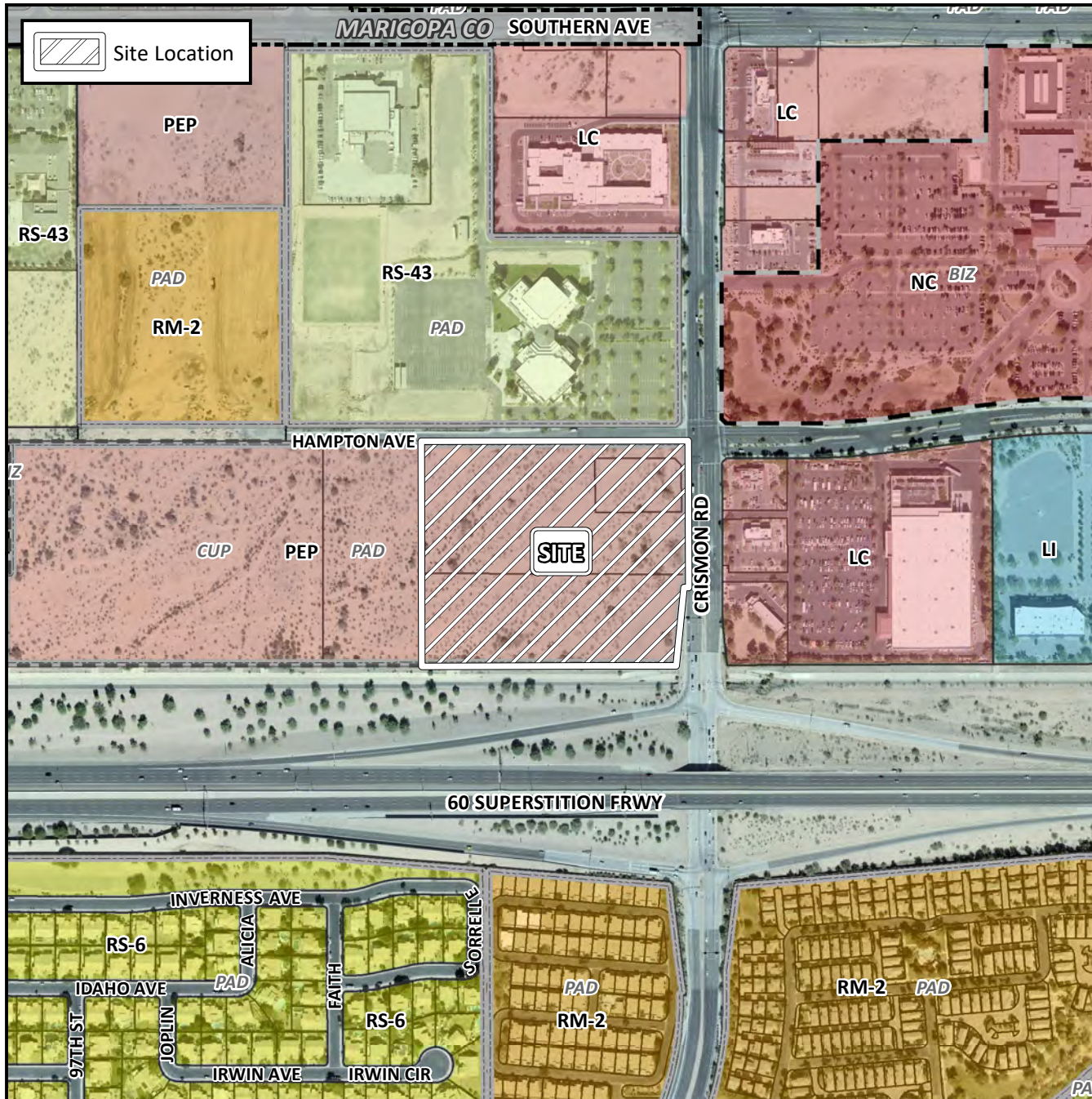


Planning and Zoning Vicinity Map: ZON19-00201



Case Details

CASE:

ZON19-00201

PRE-PLAT : ☒

SITE / ADDRESS:

District 6. Within the 9800 through 10000 blocks of East Hampton Avenue (south side) and within the 1400 through 1500 block of South Crismon Road (west side). Located at the northwest corner of the US-60 Superstition Freeway and Crismon Road. (15 ± acres)

REQUEST:

Rezoning from PEP-PAD to PEP-PAD; and Site Plan Review. This request will allow for the development of a group commercial center with office and commercial uses.

