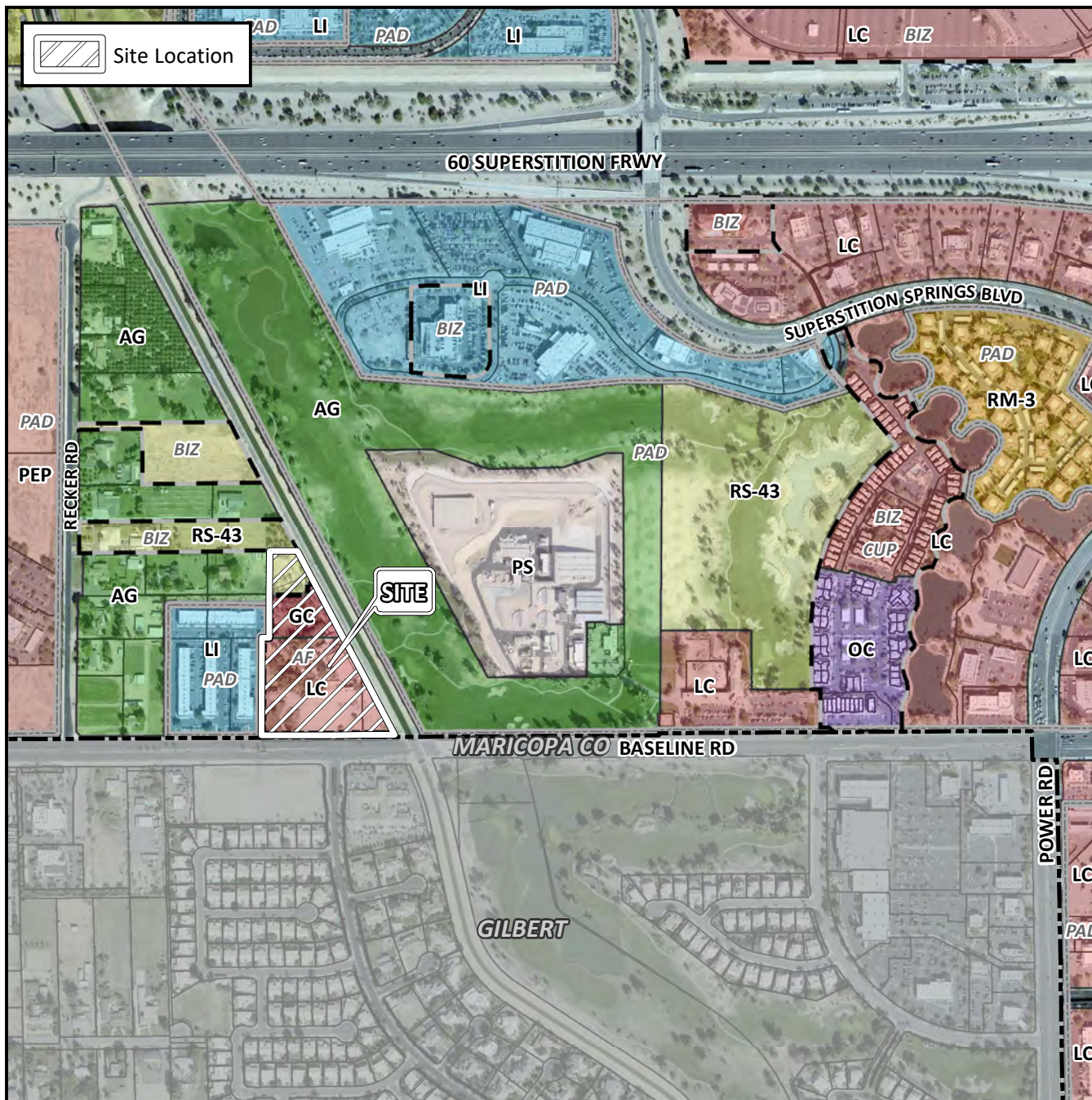


Planning and Zoning Vicinity Map: ZON19-00064



Case Details

CASE:

ZON19-00064

PRE-PLAT : ☒

SITE / ADDRESS:

District 2. Within the 6000 and 6100 blocks of East Baseline Road (north side). Located west of Power Road on the north side of Baseline Road. (6.8 ± acres)

REQUEST:

Rezoning from RS-43, LC-AF and GC-AF to RM-2-PAD-AF; and Site Plan Review. This request will allow for the development of a multi-residential use.

