




McDonald's

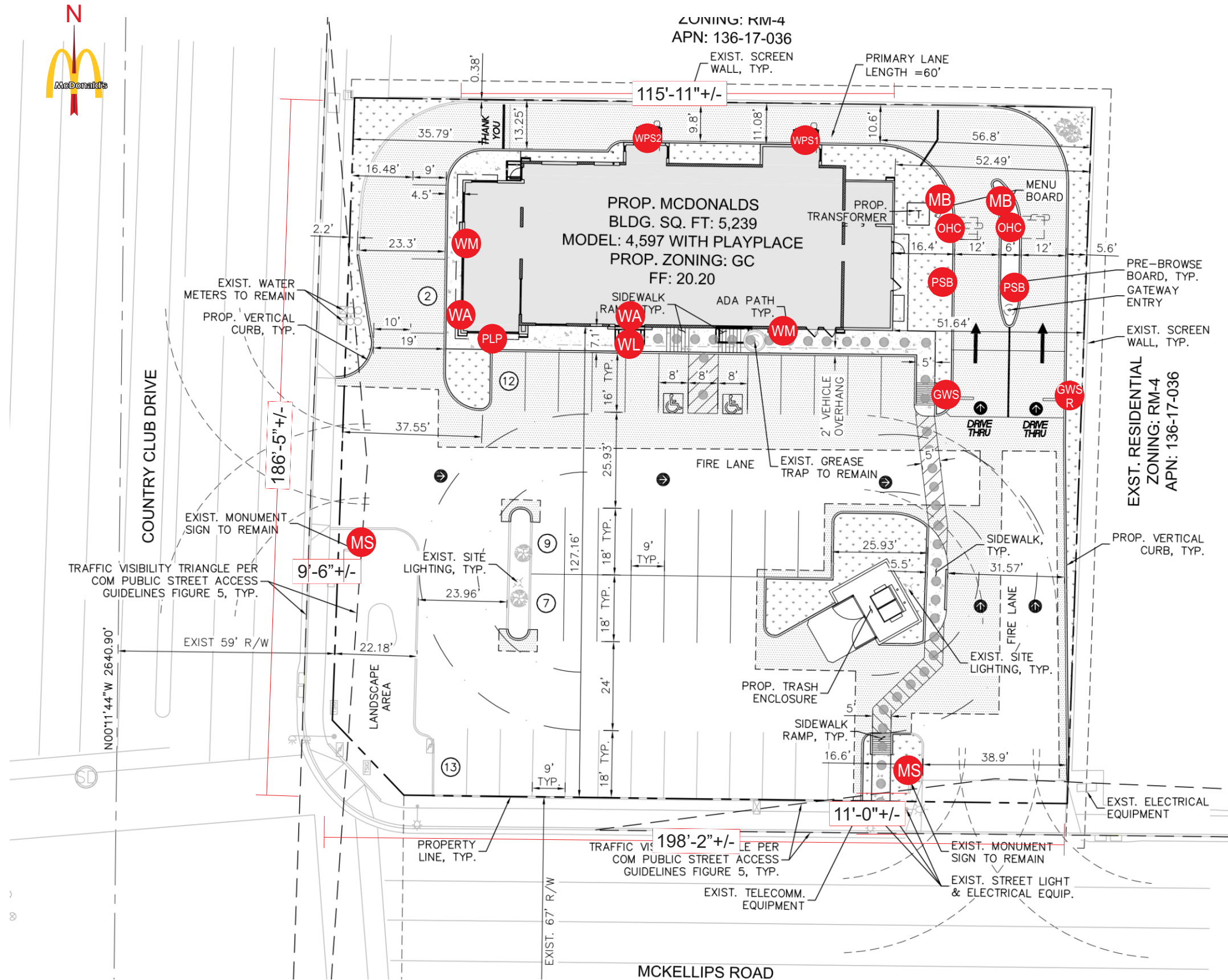
2001 N COUNTRY CLUB DRIVE - MESA AZ

SIGN PROGRAM BOOK



VICINITY MAP
NTS

Customer: MCDONALD'S	Date: 07/30/18	Prepared By: KH	Eng: -	<div>Note: Color output may not be exact when viewing or printing this drawing. All colors used are PMS or the closest CMYK equivalent. If these colors are incorrect, please provide the correct PMS match and a revision to this drawing will be made.</div>	<div><div>persóna SIGNS LIGHTING IMAGE</div></div> <div>DISTRIBUTED BY SIGN UP COMPANY 700 21st Street Southwest PO Box 210 Watertown, SD 57201-0210 1.800.843.9888 • www.personasigns.com</div>
Location: MESA, AZ	File Name: 169878 - R7 - 2001 N COUNTRY CLUB DRIVE - MESA, AZ				



- PSB PRE-SELL BOARD (QTY 2)
- GWS SINGLE ARM GATEWAY
- GWS_R SINGLE ARM GATEWAY (REVERSE)
- OHC ORDER HERE CANOPY (QTY 2)
- MB MENU BOARD (QTY 2)
- WPS1 WINDOW POSITION SIGN 1
- WPS2 WINDOW POSITION SIGN 2
- PLP 22" PLAYPLACE LETTERS
- WA WALL ARCH (QTY 2)
- WM 24" WORDMARK (QTY 2)
- WL WELCOME LETTERS
- MS MONUMENT SIGN (QTY 2)

APPROVAL BOX - PLEASE INITIAL

CUSTOMER APPROVAL		Date
-------------------	--	------

NOTE: Elevation drawings are for customer approval only, drawings are not to be used as any installation guide, all dimensions must be verified before installation.

Customer: MCDONALD'S	Date: 5/15/19	Prepared By: KH/CB/KH/CM/AT	Eng: -	<small>Note: Color output may not be exact when viewing or printing this drawing. All colors used are PMS or the closest CMYK equivalent. If these colors are incorrect, please provide the correct PMS match and a revision to this drawing will be made.</small>
Location: MESA, AZ	File Name: 169878 - R7 - 2001 N COUNTRY CLUB DRIVE - MESA, AZ			

persona
SIGNS | LIGHTING | IMAGE

DISTRIBUTED BY SIGN UP COMPANY
700 21st Street Southwest
PO Box 210
Watertown, SD 57201-0210
1.800.843.9888 • www.personasigns.com

SCALE: $\frac{3}{16}'' = 1'-0''$

53'-6" +/-

24" WORDMARK 

- 42" WALL ARCH 

APPROVAL BOX - PLEASE INITIAL

CUSTOMER APPROVAL

Date

NOTE: Elevation drawings are for customer approval only, drawings are not to be used as any installation guide, all dimensions must be verified before installation.

Customer:
MCDONALD'S

Date:
5/15/19Prepared By:
KH/CM/AT

Eng:
-

Note: Color output may not be exact when viewing or printing this drawing. All colors used are PMS or the closest CMYK equivalent. If these colors are incorrect, please provide the correct PMS match and a revision to this drawing will be made.

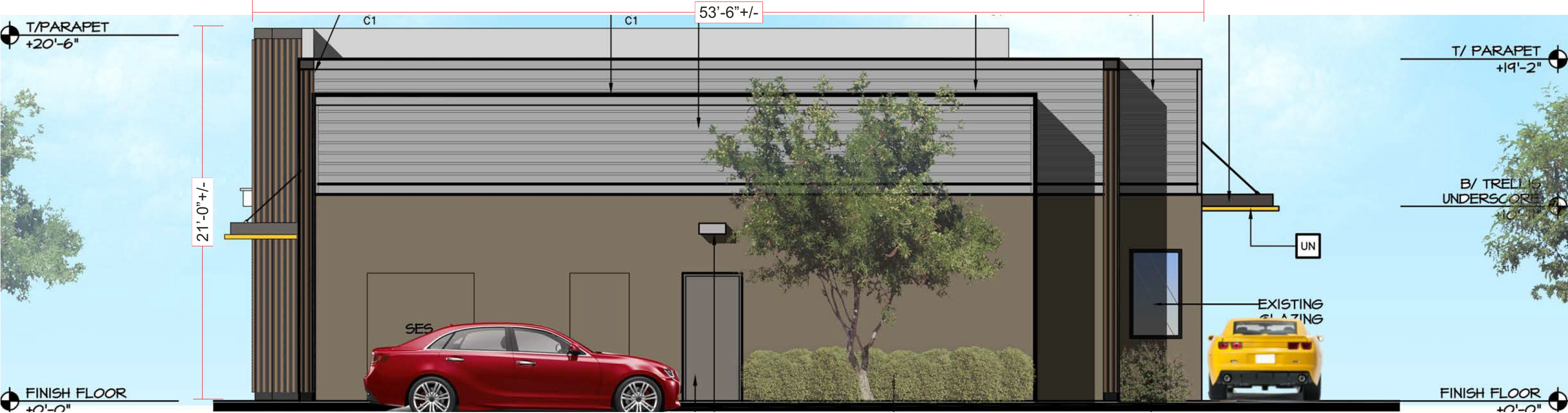
Location:
MESA, AZ

File Name:
169878 - R7 - 2001 N COUNTRY CLUB DRIVE - MESA, AZ

persóna
SIGNS | LIGHTING | IMAGE

DISTRIBUTED BY SIGN UP COMPANY
700 21st Street Southwest
PO Box 210
Watertown, SD 57201-0210
1.800.843.9888 • www.personasigns.com


EAST (REAR) ELEVATION
SCALE: 3/16" = 1'-0"



APPROVAL BOX - PLEASE INITIAL

CUSTOMER APPROVAL		Date
-------------------	--	------

NOTE: Elevation drawings are for customer approval only, drawings are not to be used as any installation guide, all dimensions must be verified before installation.

Customer: MCDONALD'S	Date: 5/15/19	Prepared By: KH/CM/AT	Eng: -	<div>Note: Color output may not be exact when viewing or printing this drawing. All colors used are PMS or the closest CMYK equivalent. If these colors are incorrect, please provide the correct PMS match and a revision to this drawing will be made.</div>	<div> SIGNS LIGHTING IMAGE</div> <div>DISTRIBUTED BY SIGN UP COMPANY 700 21st Street Southwest PO Box 210 Watertown, SD 57201-0210 1.800.843.9888 • www.personasigns.com</div>
Location: MESA, AZ	File Name: 169878 - R7 - 2001 N COUNTRY CLUB DRIVE - MESA, AZ				

NORTH (DRIVE-THRU) ELEVATION
SCALE: 1/8" = 1'-0"



APPROVAL BOX - PLEASE INITIAL

CUSTOMER APPROVAL _____ Date _____

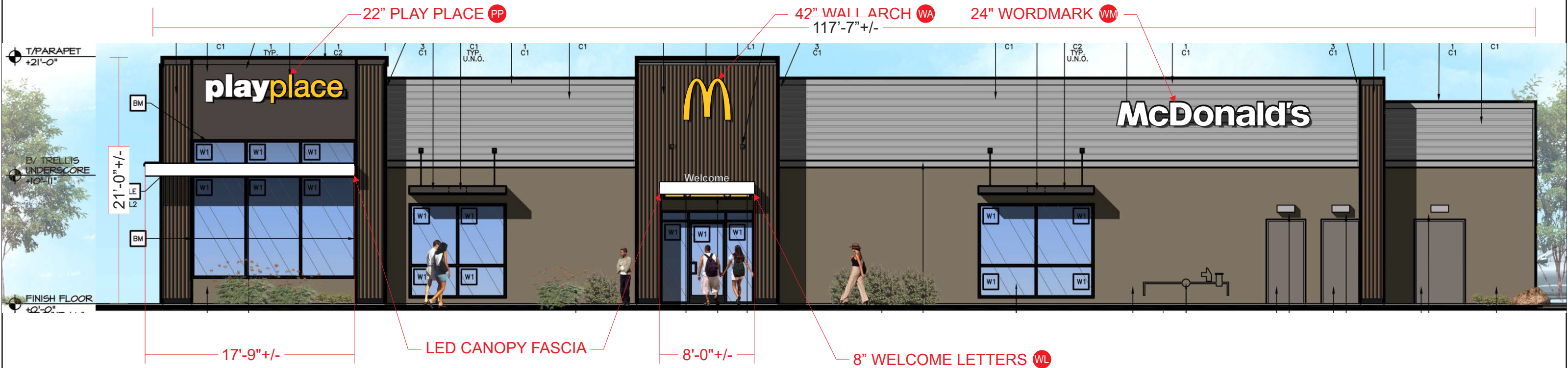
NOTE: Elevation drawings are for customer approval only, drawings are not to be used as any installation guide, all dimensions must be verified before installation.

Customer: MCDONALD'S	Date: 5/15/19	Prepared By: KH/CM/AT	Eng: -	<small>Note: Color output may not be exact when viewing or printing this drawing. All colors used are PMS or the closest CMYK equivalent. If these colors are incorrect, please provide the correct PMS match and a revision to this drawing will be made.</small>
Location: MESA, AZ	File Name: 169878 - R7 - 2001 N COUNTRY CLUB DRIVE - MESA, AZ			

persóna
SIGNS | LIGHTING | IMAGE

DISTRIBUTED BY SIGN UP COMPANY
700 21st Street Southwest
PO Box 210
Watertown, SD 57201-0210
1.800.843.9888 • www.personasigns.com

SOUTH (NON DRIVE-THRU) ELEVATION
SCALE: 1/8" = 1'-0"



APPROVAL BOX - PLEASE INITIAL		
CUSTOMER APPROVAL		Date

NOTE: Elevation drawings are for customer approval only, drawings are not to be used as any installation guide, all dimensions must be verified before installation.

Customer: MCDONALD'S	Date: 5/15/19	Prepared By: KH/CM/AT	Eng: -	Note: Color output may not be exact when viewing or printing this drawing. All colors used are PMS or the closest CMYK equivalent. If these colors are incorrect, please provide the correct PMS match and a revision to this drawing will be made.
Location: MESA, AZ	File Name: 169878 - R7 - 2001 N COUNTRY CLUB DRIVE - MESA, AZ			

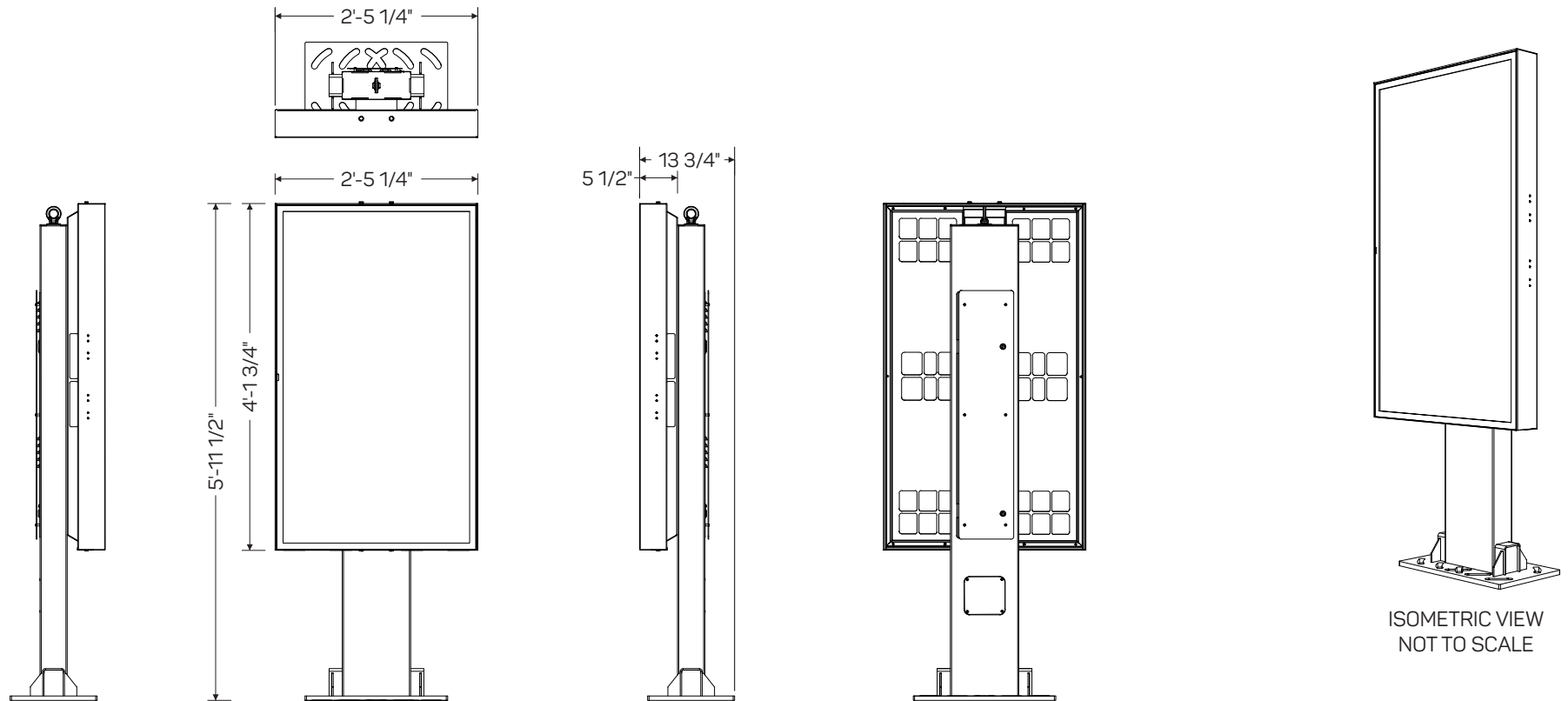
persona
SIGNS | LIGHTING | IMAGE

DISTRIBUTED BY SIGN UP COMPANY
700 21st Street Southwest
PO Box 210
Watertown, SD 57201-0210
1.800.843.9888 • www.personasigns.com

Frame	Hot dip galvanized + anti-graffiti powder coated steel
Brackets	Hot dip galvanized
Panels	Aluminium + anti-graffiti powdercoat
Access fasteners	Security Torx
Media player access	Dual camlock
Eyebolt	Stainless crane on
Baseplate	McDonalds spec triple mounting pattern option

ODMB 02 SINGLE

Displays	Samsung OH55F
Hardware	Stratacache Spectra NG
Heating/Cooling	Watlow 100W Heater Sunon 120mm AC Fan
Power Supply Units	60W DC Media Player Power Supply
Power Cables	1 x IEC Power Cable
Electrical Components	Isolated Ground 2 x IG Receptacles 20A Circuit Breaker
Communication Cables	2 x HDMI 1 x RS232
Certification	UL Certified



SCALE: 1/2" = 1'-0"

ISOMETRIC VIEW
NOT TO SCALE

Customer:
MCDONALD'S

Location:
MESA, AZ

Date:
07/30/18

File Name:
169878 - R7 - 2001 N COUNTRY CLUB DRIVE - MESA, AZ

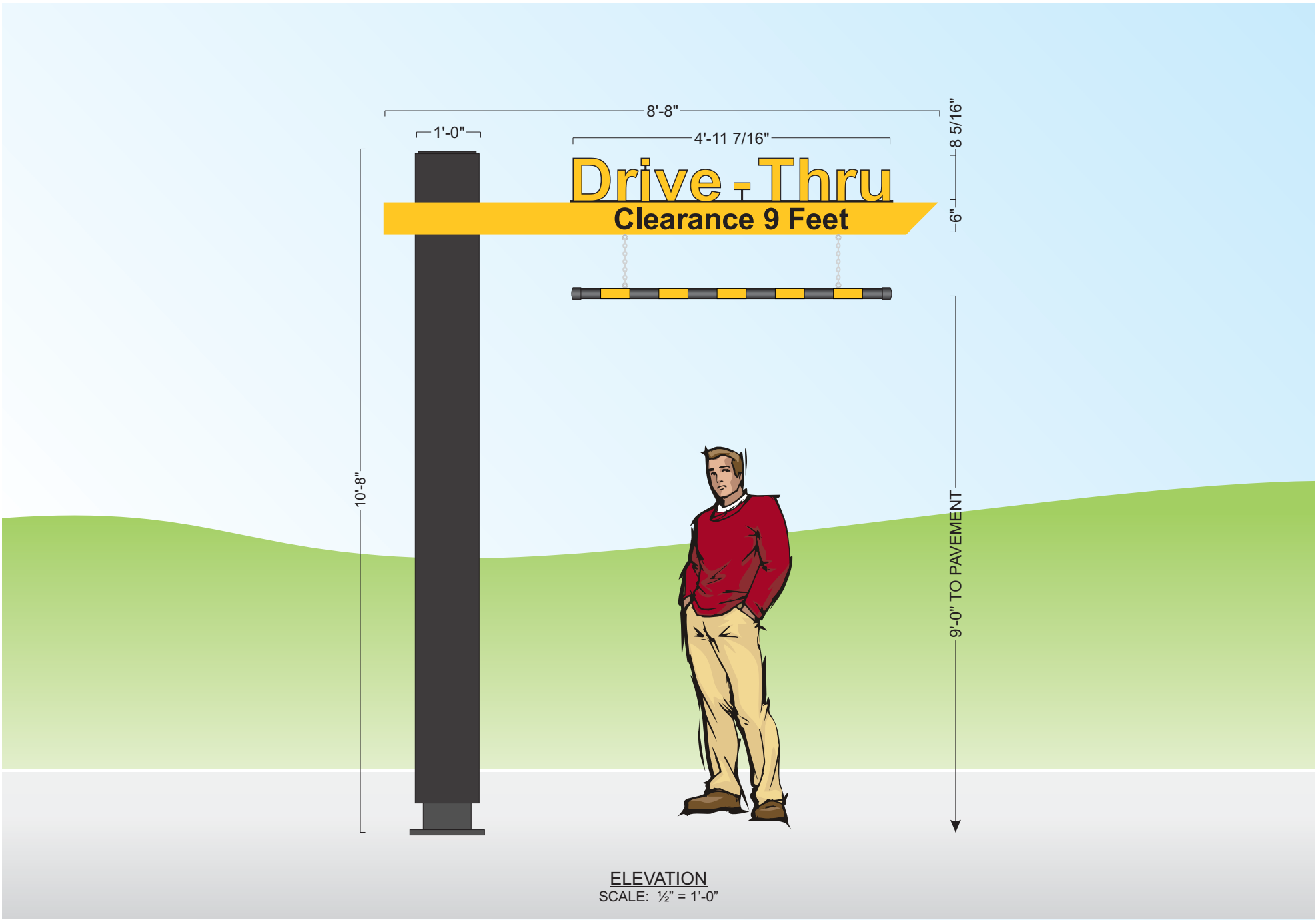
Prepared By:
KH

Note: Color output may not be exact when viewing or printing this drawing. All colors used are PMS or the closest CMYK equivalent. If these colors are incorrect, please provide the correct PMS match and a revision to this drawing will be made.

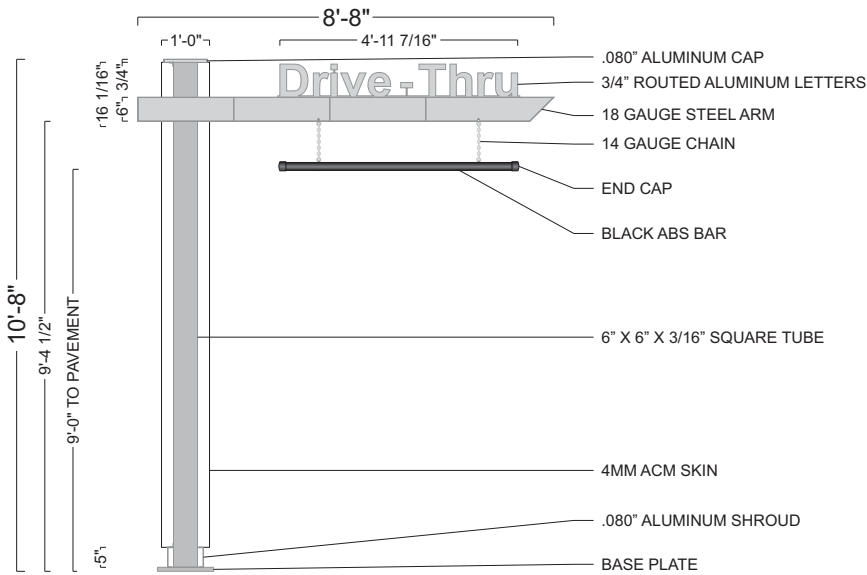
Eng:
-

persōna
SIGNS | LIGHTING | IMAGE

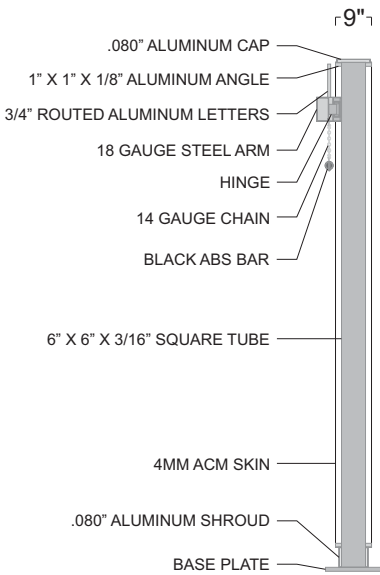
DISTRIBUTED BY SIGN UP COMPANY
700 21st Street Southwest
PO Box 210
Watertown, SD 57201-0210
1.800.843.9888 • www.personasigns.com



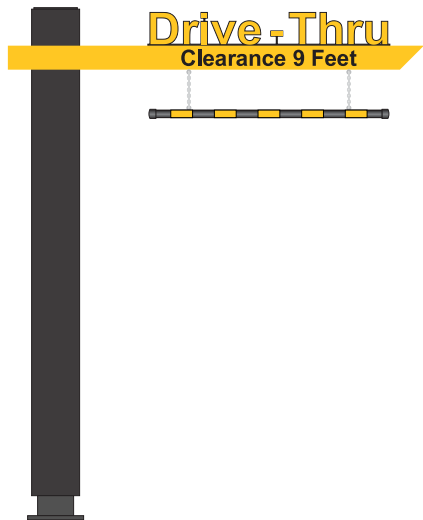
ELEVATION
SCALE: 1/2" = 1'-0"



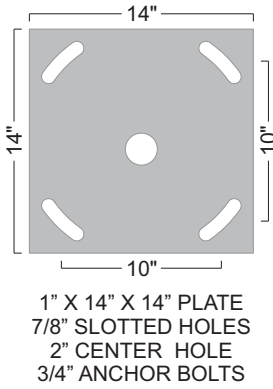
FRONT VIEW
SCALE: 1/4" = 1'-0"



END VIEW
SCALE: 1/4" = 1'-0"



GRAPHIC DETAIL
SCALE: 1/4" = 1'-0"



BASE PLATE DETAIL
SCALE: 1" = 1'-0"

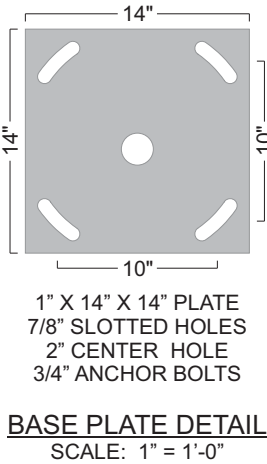
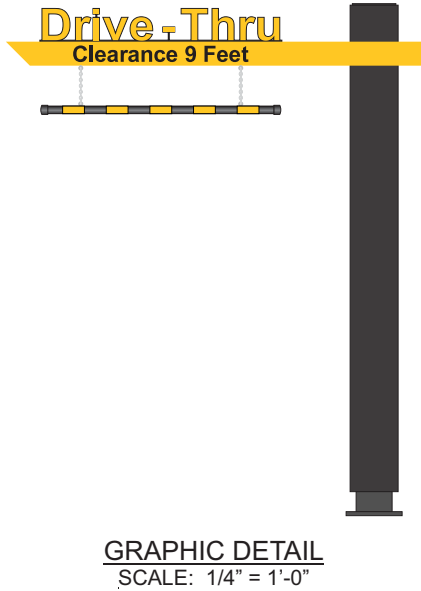
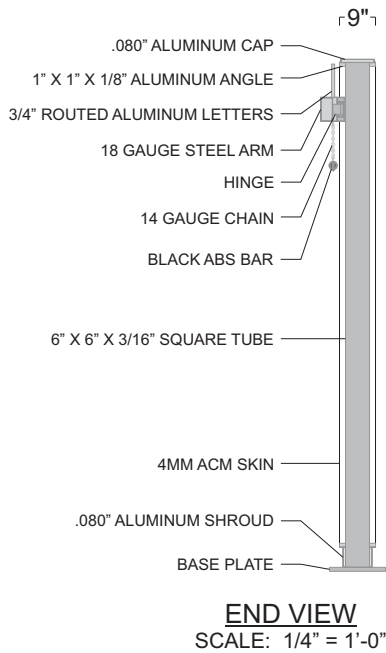
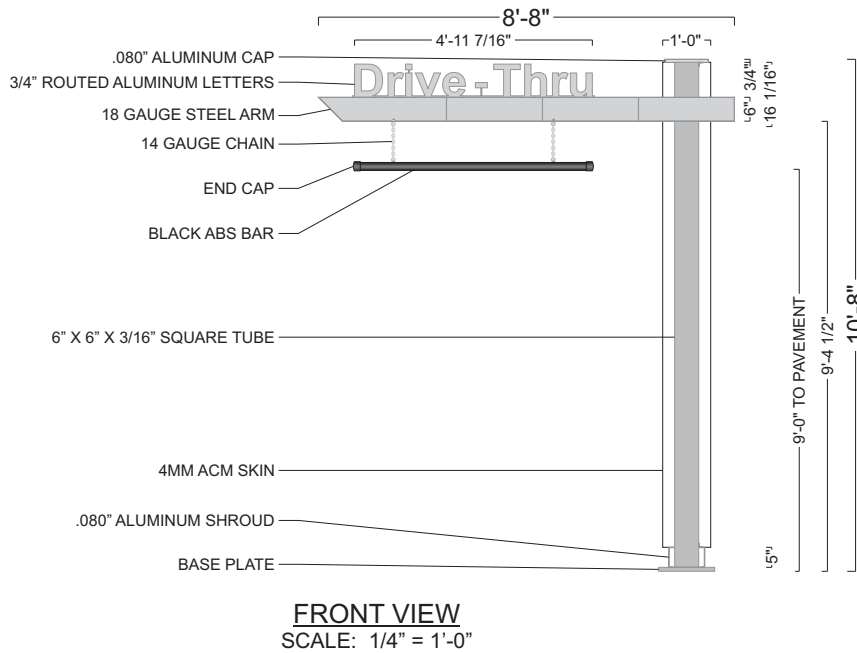
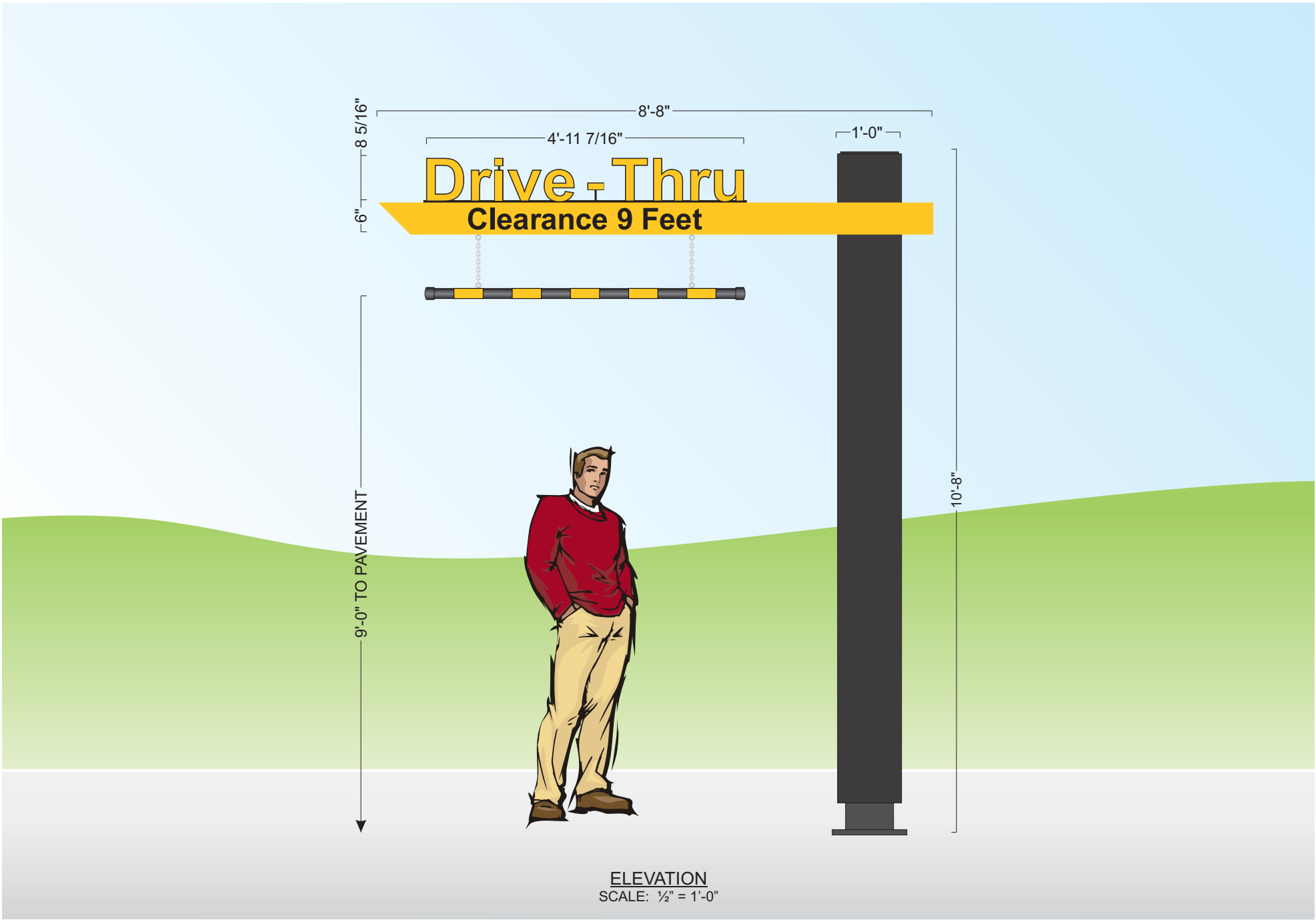
POLE COVER DETAIL
DESIGN FACTOR: TBD
4MM CHARCOAL ACM POLE COVER
.080" ALUMINUM CAP AND SHROUD
EXTERIOR FINISH:
POLE COVER - PRE-FINISHED CHARCOAL
SHROUD AND BASE PLATE - MATCH B.M. 1631 MIDNIGHT OIL

CLEARANCE BAR DETAIL
BLACK ACM PIPE W/ 180-25 GOLD VINYL STRIPES APPLIED TO 1ST SURFACE

SQUARE FEET: BOXED = 92.44
ACTUAL = 15.68

SWING ARM DETAIL
DESIGN FACTOR: TBD
18 GAUGE STEEL ARM WITH HINGE W/ 1ST SURFACE PAINT AND VINYL DECORATION:
MATCH PMS 123 C YELLOW - SWING ARM
7725-12 BLACK - "CLEARANCE 9 FEET" COPY

"DRIVE-THRU" LETTER DETAIL
3/4" ROUTED ALUMINUM LETTERS W/ 1ST SURFACE VINYL DECORATION:
180-25 GOLD - "DRIVE-THRU" COPY
BLACK - COPY OUTLINE



POLE COVER DETAIL
DESIGN FACTOR: TBD
4MM CHARCOAL ACM POLE COVER
.080" ALUMINUM CAP AND SHROUD
EXTERIOR FINISH:
POLE COVER - PRE-FINISHED CHARCOAL
SHROUD AND BASE PLATE - MATCH B.M. 1631 MIDNIGHT OIL

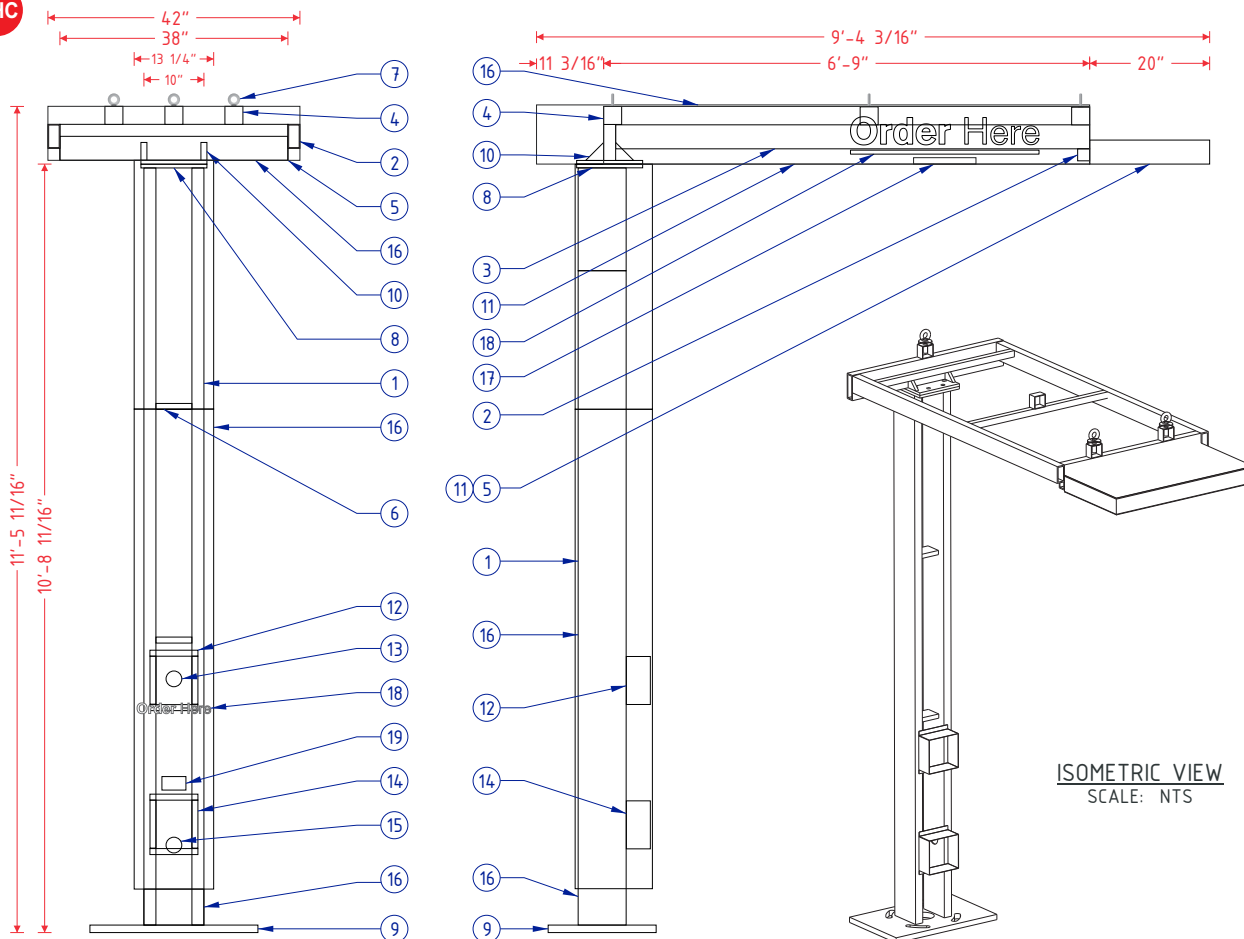
CLEARANCE BAR DETAIL
BLACK ACM PIPE W/ 180-25 GOLD VINYL STRIPES APPLIED TO 1ST SURFACE

SQUARE FEET: BOXED = 92.44
ACTUAL = 15.68

SWING ARM DETAIL
DESIGN FACTOR: TBD
18 GAUGE STEEL ARM WITH HINGE
W/ 1ST SURFACE PAINT AND VINYL DECORATION:
MATCH PMS 123 C YELLOW - SWING ARM
7725-12 BLACK - "CLEARANCE 9 FEET" COPY

"DRIVE-THRU" LETTER DETAIL
3/4" ROUTED ALUMINUM LETTERS W/ 1ST SURFACE VINYL DECORATION:
180-25 GOLD - "DRIVE-THRU" COPY
BLACK - COPY OUTLINE

OHC



FRAME & LAMP DETAIL

SCALE: 3/8" = 1'-0"

18" X 28" X 1 1/4" PLATE
1 3/8" SLOTTED HOLES
1" BOLTS

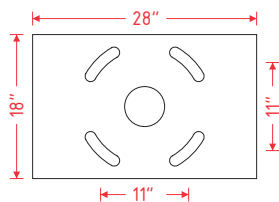


PLATE DETAIL

SCALE: 1/2" = 1'-0"

11" X 11" X 5/8" PLATE
3/4" HOLES
5/8" BOLTS

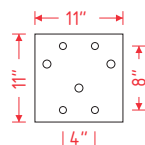


PLATE DETAIL

SCALE: 1/2" = 1'-0"

CROSS SECTION A-A

SCALE: 3/8" = 1'-0"

ISOMETRIC VIEW
SCALE: NTS

Order Here

GRAPHIC DETAIL
SCALE: 3/16" = 1'-0"

MCDONALD'S SPRINGBOARD OHC SPECIFICATIONS

NO.	PART/DESCRIPTION
1	2" X 8" X 3/16" RECTANGULAR TUBE
2	2" X 6" X 1/4" RECTANGULAR TUBE
3	2" X 4" X 1/4" RECTANGULAR TUBE
4	3" X 3" X 3/16" SQUARE TUBE
5	1" X 4" X 1/8" RECTANGULAR TUBE
6	C4 ALUMINUM C-CHANNEL
7	1/2" EYEBOLTS (3)
8	11" X 11" X 5/8" TOP PLATES (2) (SEE PLATE DETAILS)
9	18" X 28" X 1 1/4" BASE PLATE (SEE PLATE DETAILS)
10	3" X 3" X 3/4" GUSSETS
11	.063" ALUMINUM SKIN
12	.063" ALUMINUM BENT SP10 SPEAKER BOX HOLDER
13	SPEAKER OPENING
14	.063" ALUMINUM BENT DM 4/DM 5 MICROPHONE BOX HOLDER
15	MICROPHONE OPENING
16	ACM CLADDING
17	SLOAN LED LIGHT WITH POWER SUPPLY
18	REFLECTIVE WHITE 680-10 VINYL
19	ADA STICKER

NOTES:

- DESIGN FACTOR: TO BE DETERMINED
- 2" X 8" X 3/16 RECTANGULAR TUBE FRAME
- ACM AND .063" ALUMINUM SKIN
- EXTERIOR FINISH:
 - BASE PLATE - PAINT BM 1631 MIDNIGHT OIL
 - TUBE AND TOP ACM - PAINT CHARCOAL
 - SPRINGBOARD TIP AND UNDERSIDE - PAINT PMS 123 C GOLD
- ACM/SKIN REMOVABLE FOR SERVICE
- U.L. LISTED
- ELECTRICAL: 0.64 AMPS/120 VOLTS

Customer:

MCDONALD'S

Location:

MESA, AZ

Date:

07/30/18

Prepared By:

KH

Note: Color output may not be exact when viewing or printing this drawing. All colors used are PMS or the closest CMYK equivalent. If these colors are incorrect, please provide the correct PMS match and a revision to this drawing will be made.

File Name:

169878 - R7 - 2001 N COUNTRY CLUB DRIVE - MESA, AZ

Eng:

-

persona
SIGNS | LIGHTING | IMAGE

DISTRIBUTED BY SIGN UP COMPANY

700 21st Street Southwest

PO Box 210

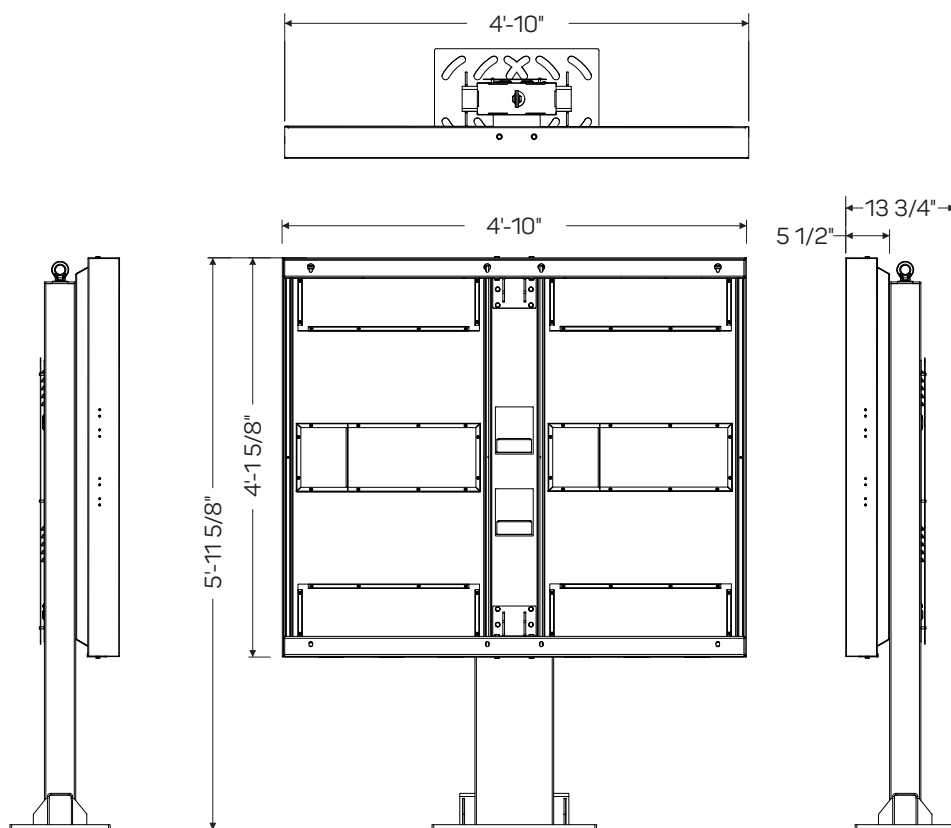
Watertown, SD 57201-0210

1.800.843.9888 • www.personasigns.com

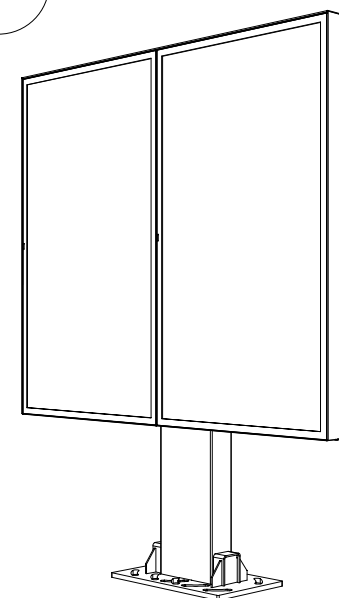
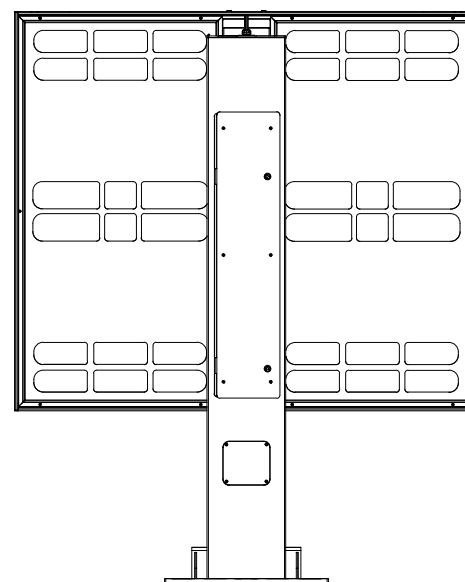
Frame	Hot dip galvanized + anti-graffiti powder coated steel
Brackets	Hot dip galvanized
Panels	Aluminium + anti-graffiti powdercoat
Access fasteners	Security Torx
Media player access	Dual camlock
Eyebolt	Stainless crane on
Baseplate	McDonalds spec triple mounting pattern option

ODMB 02 DOUBLE

Displays	2 x Samsung OH55F
Hardware	2 x Stratacache Spectra NG
Heating/Cooling	Watlow 100W Heater Sunon 120mm AC Fan
Power Supply Units	2 x 60W DC Media Player Power Supply
Power Cables	2 x IEC Power Cables
Electrical Components	Isolated Ground 2 x IG Receptacles 20A Circuit Breaker
Communication Cables	4 x HDMI 2 x RS232
Certification	UL Certified



SCALE: 1/2" = 1'-0"



ISOMETRIC VIEW
NOT TO SCALE

Customer:
MCDONALD'S

Location:
MESA, AZ

Date:
07/30/18

File Name:
169878 - R7 - 2001 N COUNTRY CLUB DRIVE - MESA, AZ

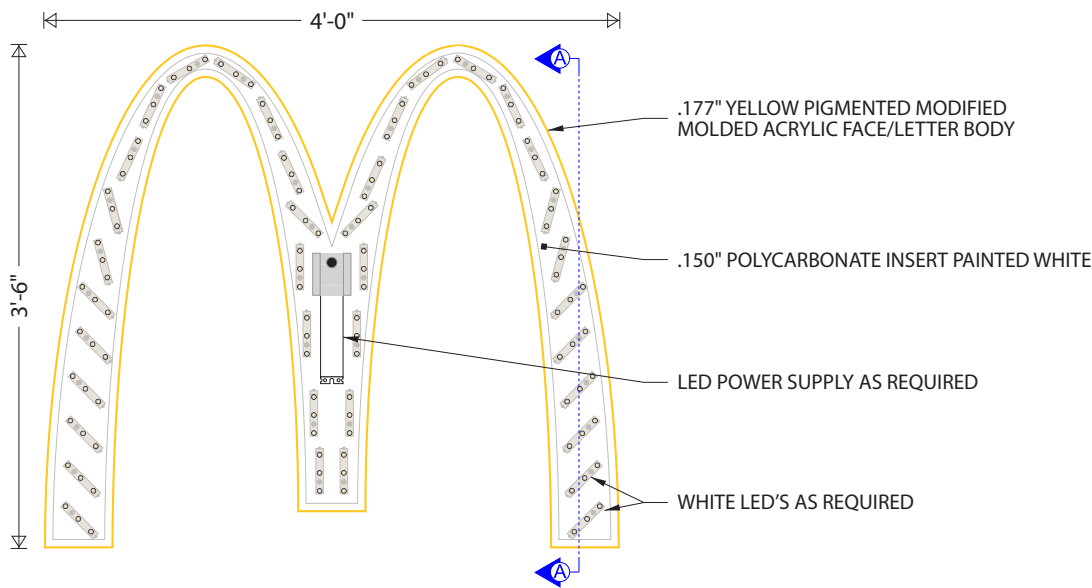
Prepared By:
KH

Note: Color output may not be exact when viewing or printing this drawing. All colors used are PMS or the closest CMYK equivalent. If these colors are incorrect, please provide the correct PMS match and a revision to this drawing will be made.

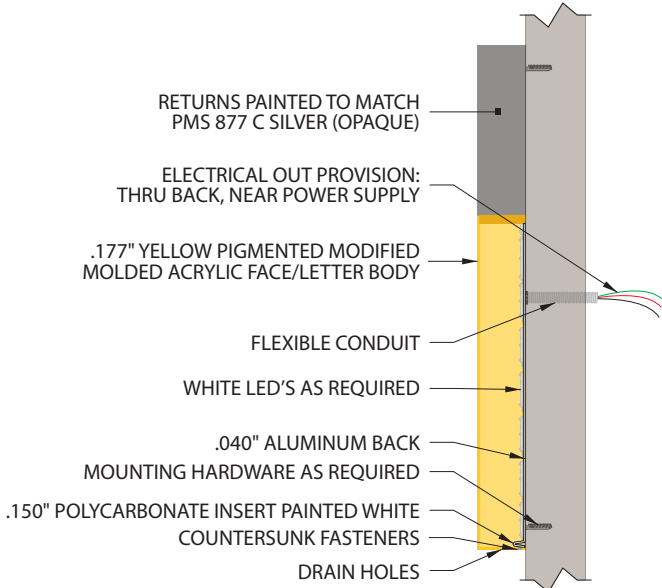
Eng:
-

persōna
SIGNS | LIGHTING | IMAGE

DISTRIBUTED BY SIGN UP COMPANY
700 21st Street Southwest
PO Box 210
Watertown, SD 57201-0210
1.800.843.9888 • www.personasigns.com



FRAME & LAMP DETAIL
SCALE: 3/4" = 1'-0"

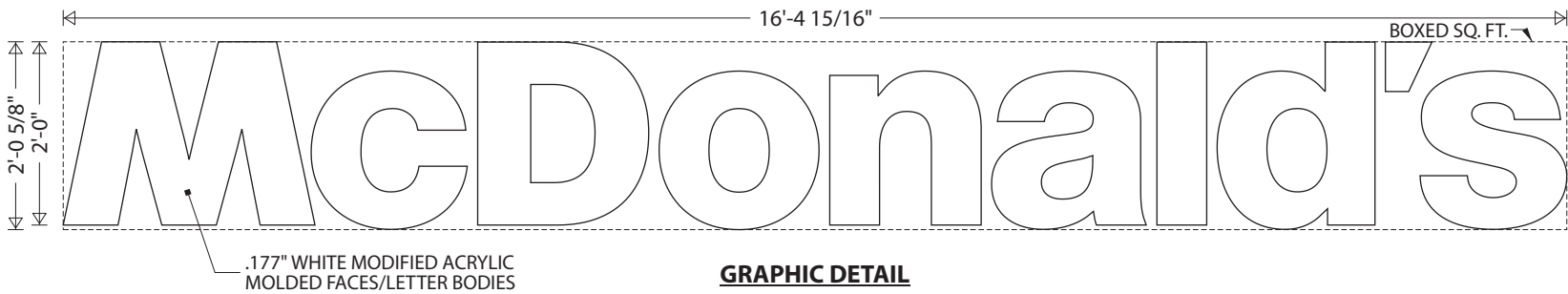


CROSS SECTION A-A
SCALE: 3/4" = 1'-0"



GRAPHIC DETAIL
SCALE: 3/4" = 1'-0"

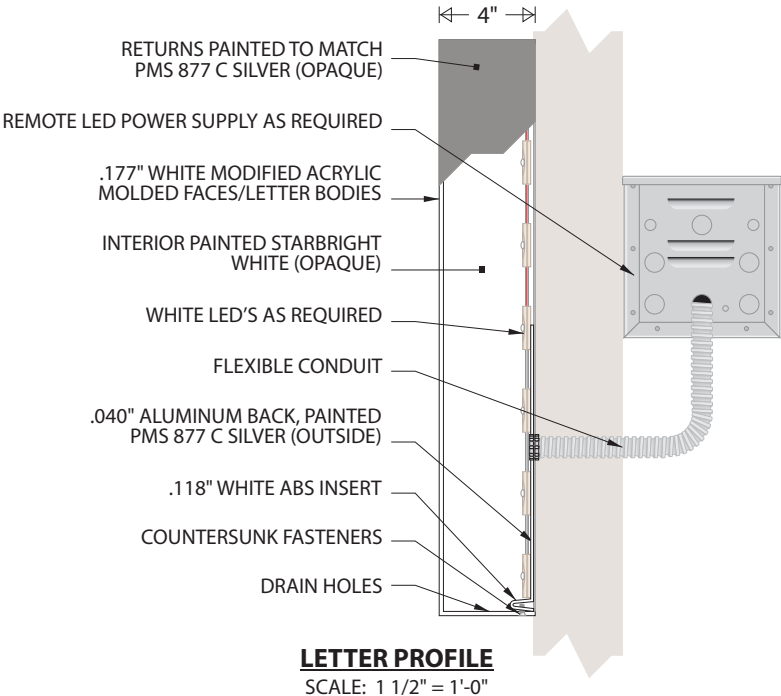
FRAME DETAIL:
DESIGN FACTOR: TBD
.177" FORMED YELLOW PIGMENTED (PMS 123 C) MODIFIED ACRYLIC FACE/LETTER BODY
EXTERIOR FINISH: PAINTED TO MATCH PMS 877 C SILVER (OPAQUE)
INTERIOR FINISH: PAINTED STARBRIGHT WHITE (OPAQUE)
.150" POLYCARBONATE INSERT PAINTED STAR-BRIGHTWHITE
.040" ALUMINUM BACK
LETTER BODY REMOVABLE FOR SERVICE ACCESS
U.L. APPROVED
ELECTRICAL: 0.85 AMPS, 120 VOLTS
SQUARE FOOTAGE:
BOXED = 14.00
ACTUAL = 4.90



GRAPHIC DETAIL
SCALE: 1/2" = 1'-0"

NOTES:
.177" MOLDED WHITE MODIFIED ACRYLIC LETTER BODIES
INSTALLED ON ALUMINUM BACKS
.118" WHITE ABS INSERTS
EXTERIOR FINISH: MATCH PMS 877 C SILVER (OPAQUE);
BACKS PAINTED PMS 877 C SILVER
INTERIOR FINISH: STAR-BRIGHT WHITE (OPAQUE)
LETTER BODIES REMOVABLE FOR SERVICE ACCESS
ACCESS PANEL BEHIND LETTER "n" FOR RACEWAY ACCESS
U.L. APPROVED
ELECTRICAL: 1.10 AMPS, 120 VOLTS
SQUARE FOOTAGE:
BOXED = 33.38
ACTUAL = 19.53

REMOTE WORDMARK LETTER PROFILE

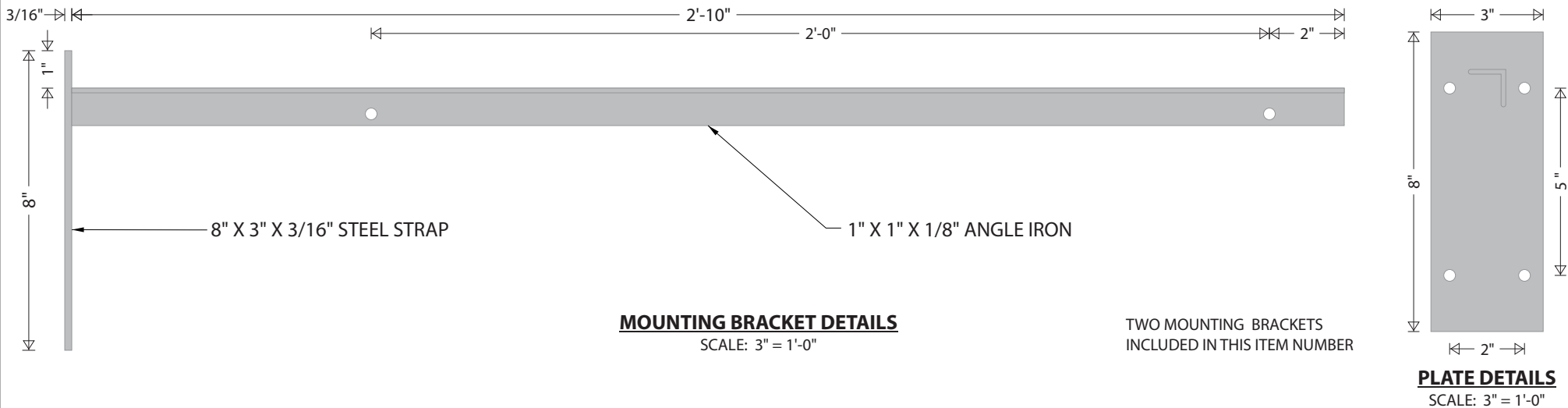


LETTER PROFILE
SCALE: 1 1/2" = 1'-0"



GRAPHIC DETAIL
SCALE: 1 1/2" = 1'-0"

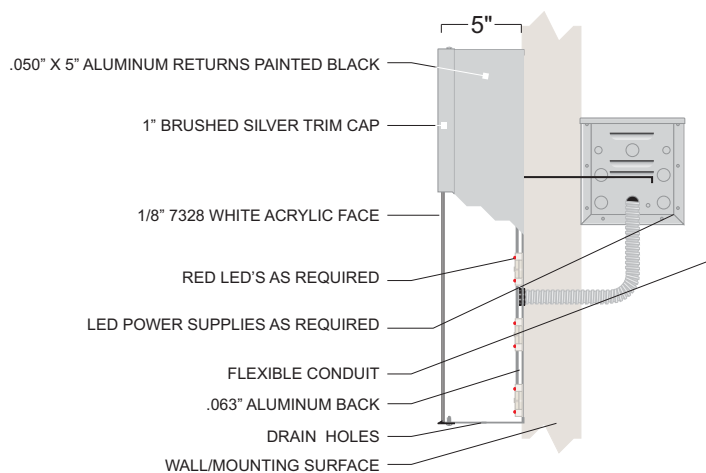
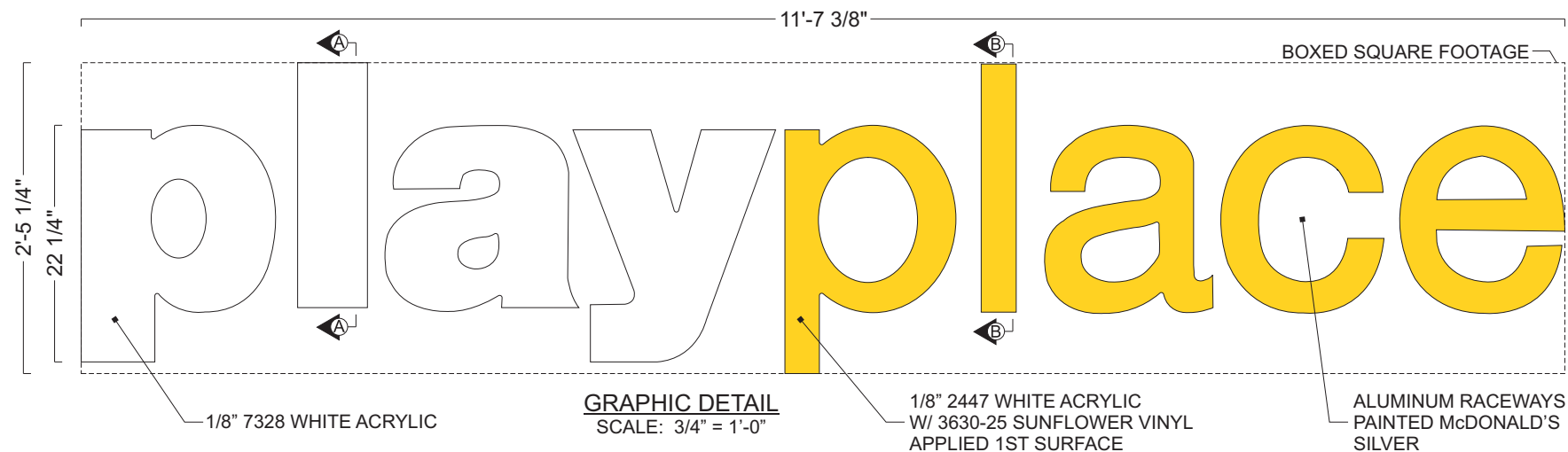
“WELCOME” LETTER DETAILS
3/4” ALUMINUM LETTERS WITH 1ST
SURFACE DECORATION:
7725-120 SILVER - “WELCOME”
COPY
BLACK POWDERCOAT - OUTLINE
SQUARE FOOTAGE: BOXED = 2.54
ACTUAL = 1.18



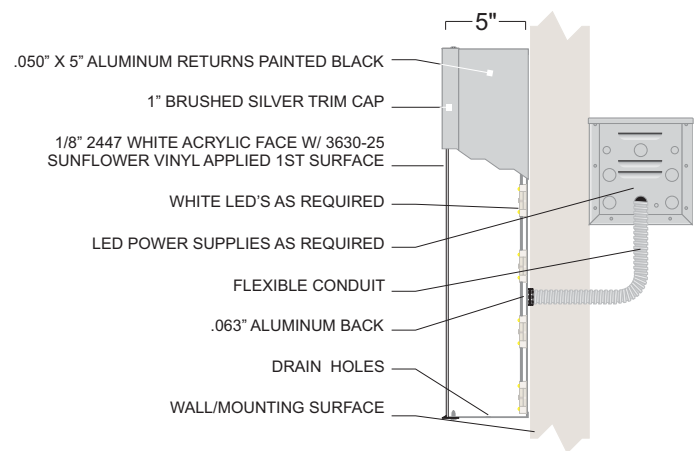
WINDOW POSITION SIGN DETAILS
SCALE: 1 1/2" = 1'-0"

BRACKET DETAILS
DESIGN FACTOR: TBD
3/16" X 3" STEEL STRAP
1" X 1" X 1/8" ANGLE IRON ARM
EXTERIOR FINISH: PAINTED PMS
877 C SILVER
5/16" HOLES PUNCHED IN ANGLE
AND PLATE FOR MOUNTING

WINDOW POSITION SIGNS DETAIL
DESIGN FACTOR: TBD
.150" PIGMENTED PVC BOARD TO
MATCH GREY FORD - MED DK
PLATINUM
WHITE SCREENED COPY 1ST SURFACE
2.50 SQUARE FEET
* BOTH WINDOW POSITION SIGNS
ARE INCLUDED IN THIS ITEM.



CROSS SECTION A-A
SCALE: 1" = 1'-0"



CROSS SECTION B-B
SCALE: 1" = 1'-0"

NOTES:

U.L. LISTED
ELECTRICAL: (1) 20A/120V CIRCUIT
INTERIOR FINISHED REFLECTIVE WHITE
DISCONNECT SWITCH ON RIGHT HAND END OF RACEWAY
SQUARE FOOTAGE: BOXED = 28.31
ACTUAL = 11.31

Customer:
MCDONALD'S

Date:
03/20/19

Prepared By:
KH

Note: Color output may not be exact when viewing or printing this drawing. All colors used are PMS or the closest CMYK equivalent. If these colors are incorrect, please provide the correct PMS match and a revision to this drawing will be made.

Location:
MESA, AZ

File Name:
169878 - R7 - 2001 N COUNTRY CLUB DRIVE - MESA, AZ

Eng:
-

persona
SIGNS | LIGHTING | IMAGE

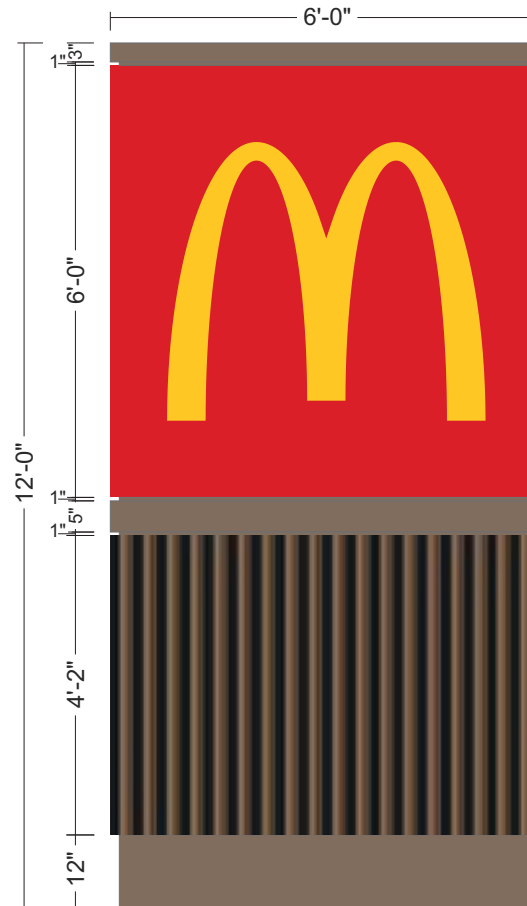
DISTRIBUTED BY SIGN UP COMPANY
700 21st Street Southwest
PO Box 210
Watertown, SD 57201-0210
1.800.843.9888 • www.personasigns.com



EXISTING
6' WIDE X 6' TALL
12' OAH


PROPOSED

BOXED SIGN AREA: 36 SQ FT



AL ALUMINUM BATTEN SYSTEM
MFR: Awnex
SIZE: 2"x2" PROFILE
COLOR: WOOD GRAIN, BACKRAIL UNFINISHED, ENDCAP PAINTED TO MATCH
SUBSTRATE: 1/2" LP SMARTBOARD
SUBSTRATE COLOR: RAL 7022
*To be applied on all 4 sides of monument

GRAPHIC DETAIL
SCALE: 3/8" = 1' 0"

Customer: MCDONALD'S	Date: 05/17/19	Prepared By: SC/CM	Note: Color output may not be exact when viewing or printing this drawing. All colors used are PMS or the closest CMYK equivalent. If these colors are incorrect, please provide the correct PMS match and a revision to this drawing will be made.	 DISTRIBUTED BY SIGN UP COMPANY 700 21st Street Southwest PO Box 210 Watertown, SD 57201-0210 1.800.843.9888 • www.personasigns.com
Location: MESA, AZ	File Name: 169878 - R7 - 2001 N COUNTRY CLUB DRIVE - MESA, AZ	Eng: -		

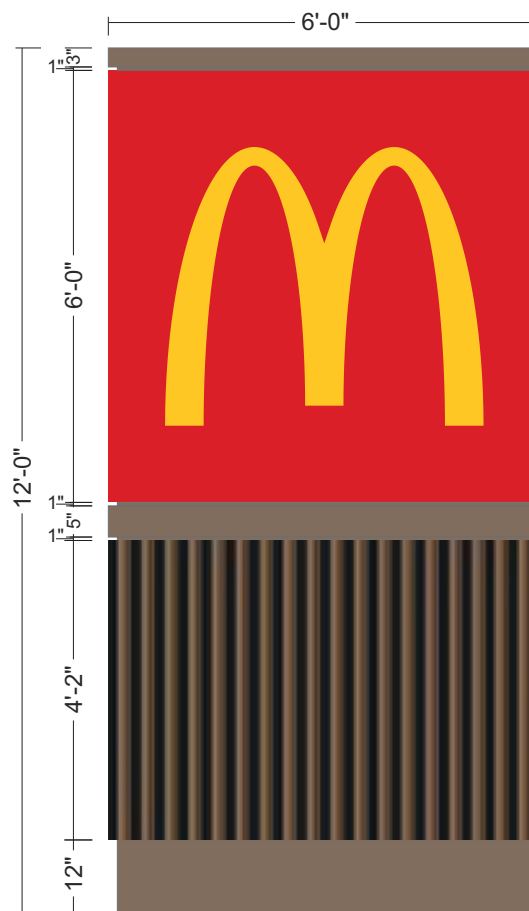


EXISTING
6' WIDE X 6' TALL
12' OAH



PROPOSED

BOXED SIGN AREA: 36 SQ FT



AL ALUMINUM BATTEN SYSTEM
MFR: AWNEX
SIZE: 2"x2" PROFILE
COLOR: WOOD GRAIN, BACKRAIL UNFINISHED, ENDCAP PAINTED TO MATCH
SUBSTRATE: 1/2" LP SMARTBOARD
SUBSTRATE COLOR: RAL 7022
*To be applied on all 4 sides of monument

GRAPHIC DETAIL
SCALE: 3/8" = 1' 0"

Customer:
MCDONALD'S

Date:
05/17/19

Prepared By:
SC/CM

Note: Color output may not be exact when viewing or printing this drawing. All colors used are PMS or the closest CMYK equivalent. If these colors are incorrect, please provide the correct PMS match and a revision to this drawing will be made.

Location:
MESA, AZ

File Name:
169878 - R7 - 2001 N COUNTRY CLUB DRIVE - MESA, AZ

Eng:
-

persona
SIGNS | LIGHTING | IMAGE

DISTRIBUTED BY SIGN UP COMPANY
700 21st Street Southwest
PO Box 210
Watertown, SD 57201-0210
1.800.843.9888 • www.personasigns.com



Monument Sign

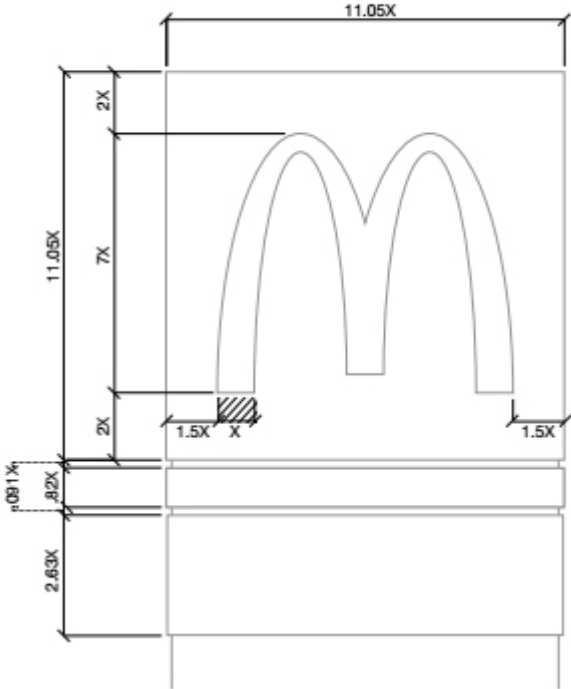
A LOW HEIGHT SIGN THAT EMBRACES THE LOCAL LANDSCAPE AND DISPLAYS THE GOLDEN ARCHES AGAINST A SOLID BACKGROUND. IDEAL FOR LOCATIONS WITH LIMITED VISIBILITY DUE TO ENVIRONMENTAL OBSTACLES (TREES, BRIDGES, BUILDINGS, OTHER SIGNAGE) OR AREAS GOVERNED BY STRICT CODE REQUIREMENTS.



Monument Sign

SIGN ANATOMY

This graphic represents the intent of accurately proportioned McDonald's signage. We use the width of the foot of the Golden Arches as our governing dimension. All other dimensions can be determined from this figure.

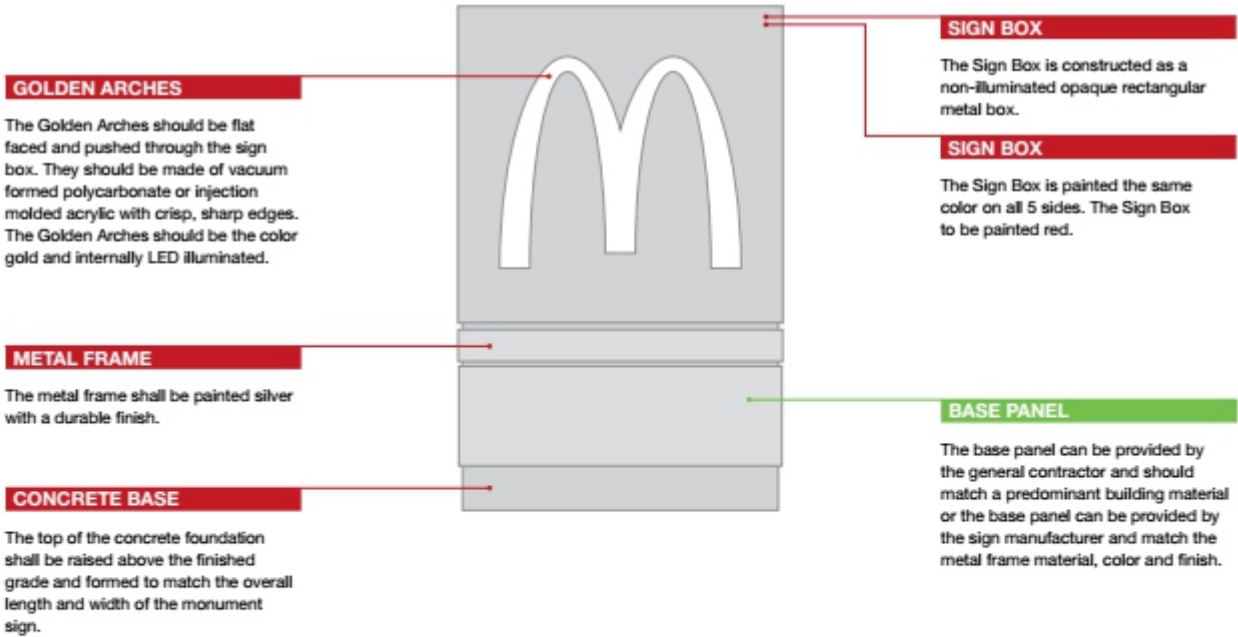




Monument Sign

U.S. DESIGN STANDARDS

- FIXED
- FLEXIBLE
- OPTIONAL



Monument Sign

U.S. & GLOBAL STANDARDS

The Monument sign is a simple straightforward sign. The recommended options consist of the variations allowed in the colors and materials.

- ① - Golden Arches on a red background
- Silver base panel
- ② - Golden Arches on a red background
- Masonry brick base panel (example)

NOTE: A predominant building material can be used in lieu of the silver base panel

