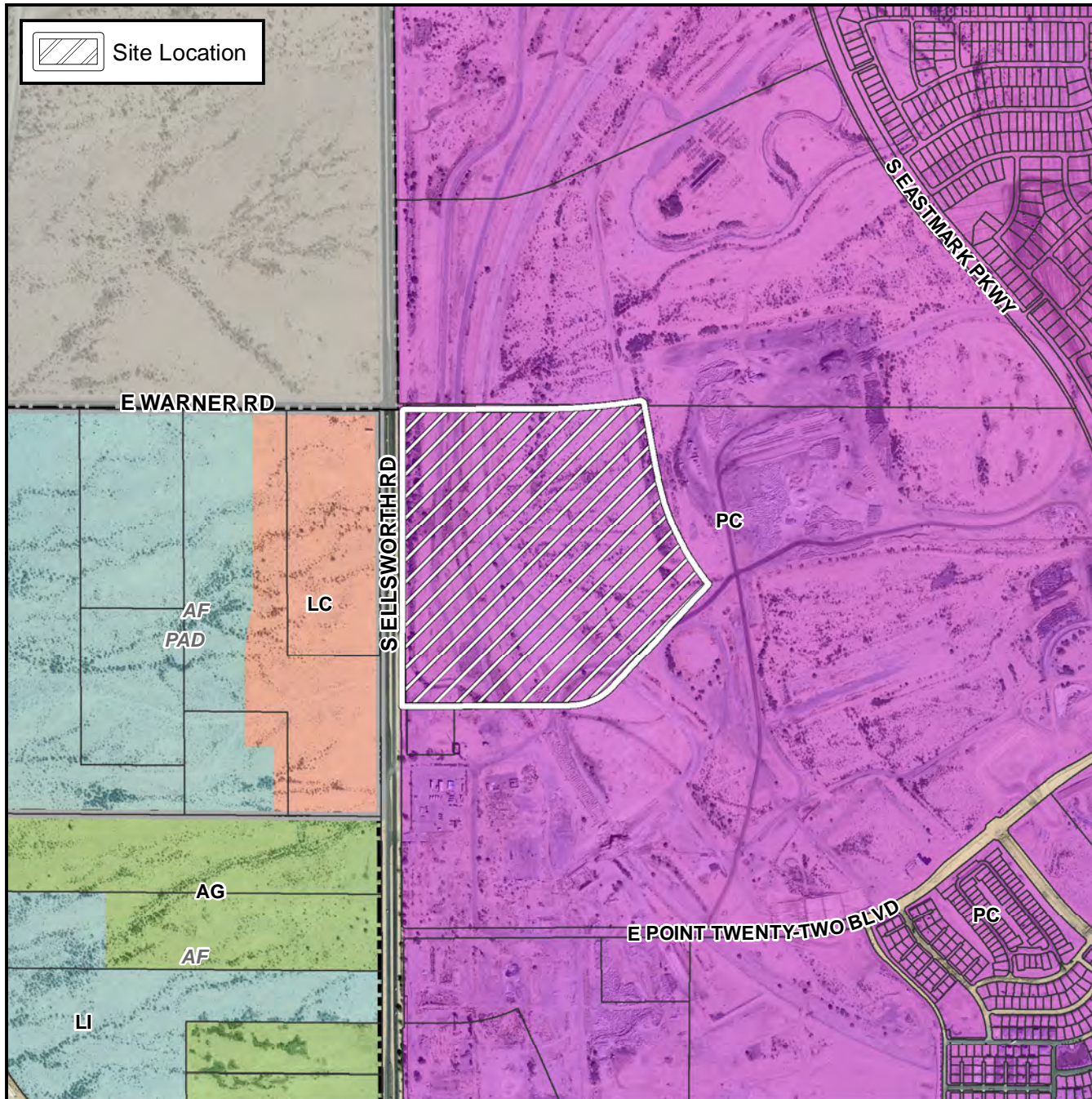


## Preliminary Plat Vicinity Map



## Case Details

### Project:

ZON18-00991

Eastmark DU 3/4N (Phase 5) MDR

### Site / Address:

District 6. Within the 9200 through 9400 blocks of East Warner Road (south side); the 4400 through 4700 blocks of South Ellsworth Road (east side); and the 4400 through 4600 blocks of South Inspirian Parkway. Located south of Warner Road on the east side of Ellsworth Road. (78.8± Acres)

