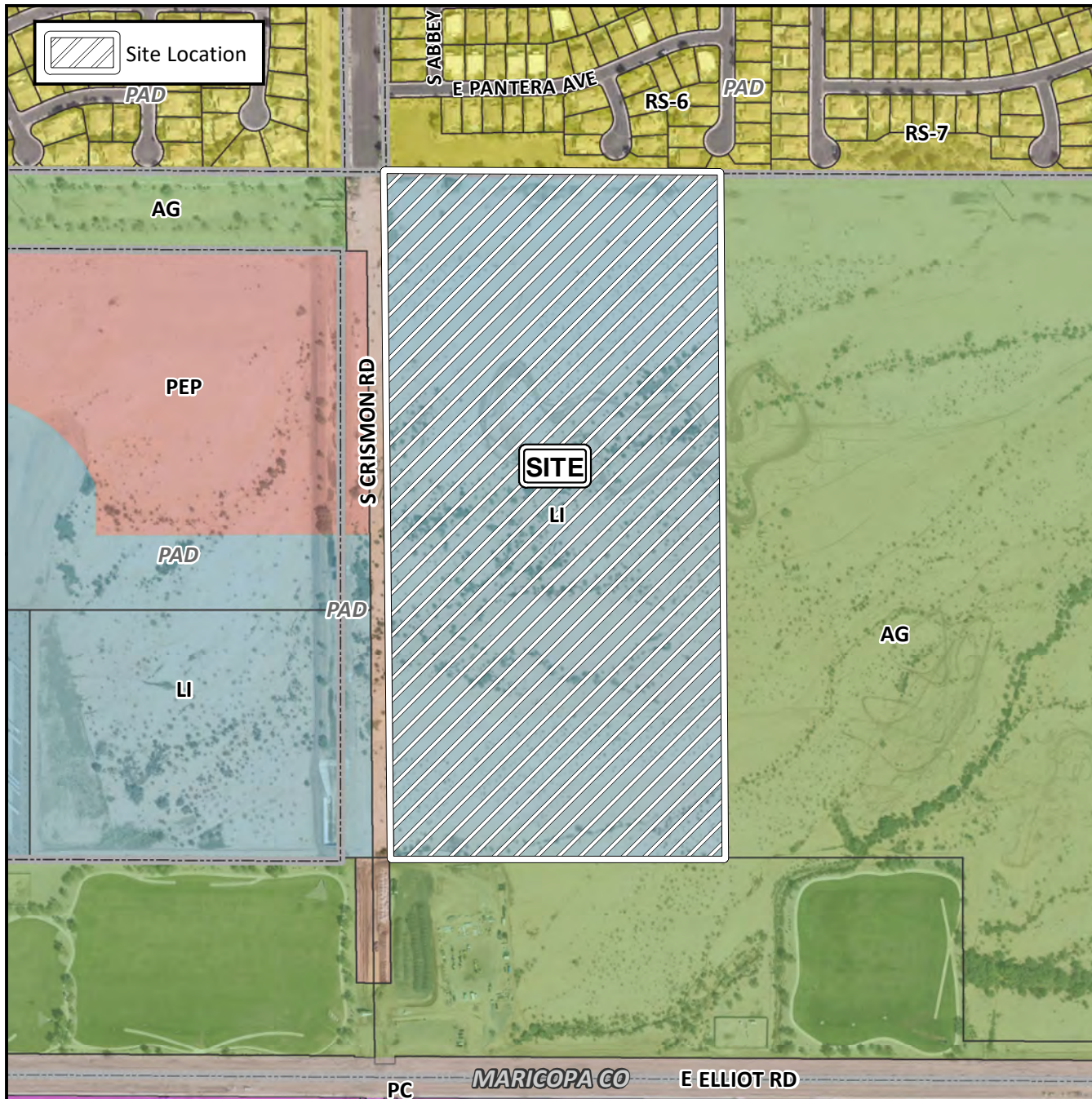


## Board of Adjustment Vicinity Map: BOA19-00173



## Case Details

### Case:

BOA19-00173

### Site / Address:

District 6. Within the 3200 through the 3500 blocks of South Crismon Road (east side)

### Request:

Requesting a Special Use Permit (SUP) to allow for a reduction in required parking in the LI-PAD District.

