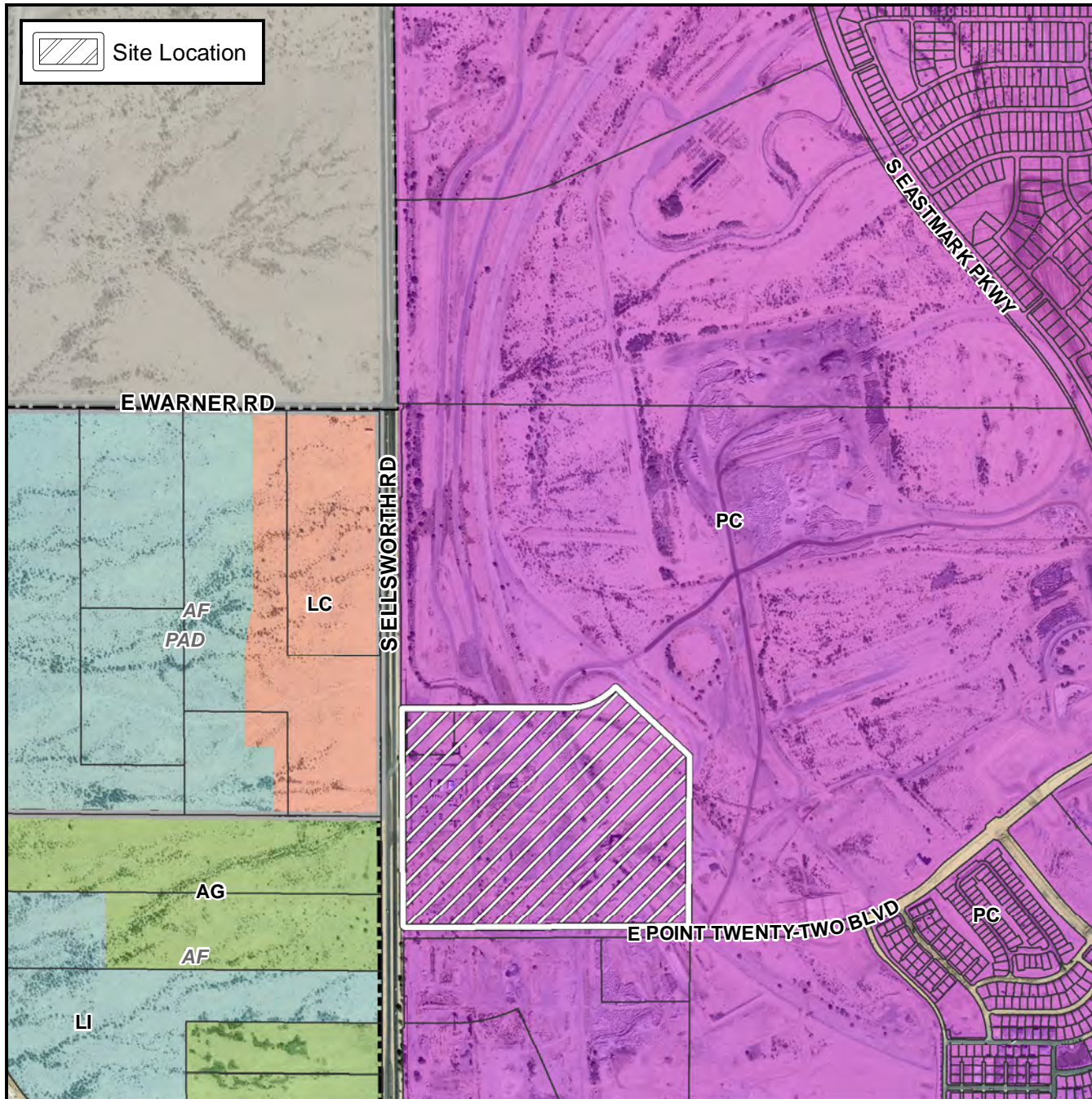


# Preliminary Plat Vicinity Map



## Case Details

### Project:

ZON18-00992  
Eastmark DU 3/4N Phase 4

### Site / Address:

District 6. Within the 4700 through 4900 blocks of South Ellsworth Road (east side) and the 9200 through 9500 blocks of East Ray Road (north side). Located south of Warner Road on the east side of Ellsworth Road. (62.4± Acres)

