



PLANNING PRE-SUBMITTAL	11.26.18
1ST PLANNING SUBMITTAL	01.11.19
2ND PLANNING SUBMITTAL	03.01.19
△	
△	
△	
△	
△	
△	

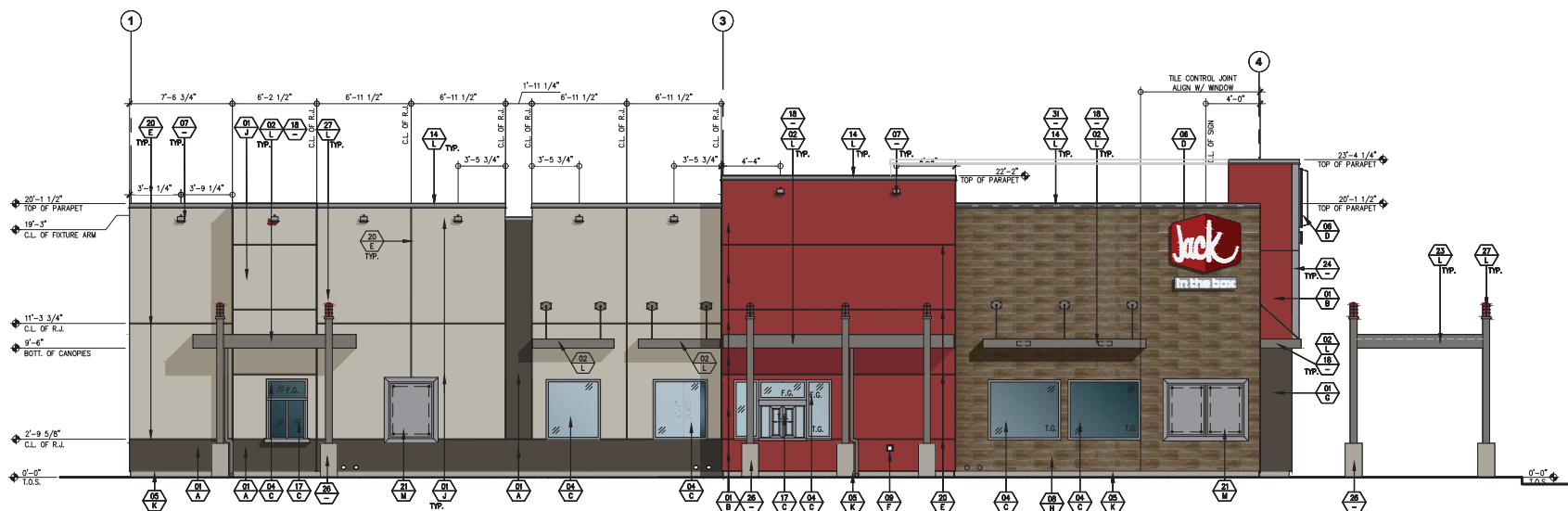
MK TYPE: MK9DS\_MD  
JIB #: 1610  
ADDRESS:

9113 E. GUADALUPE RD.  
MESA, AZ 85212

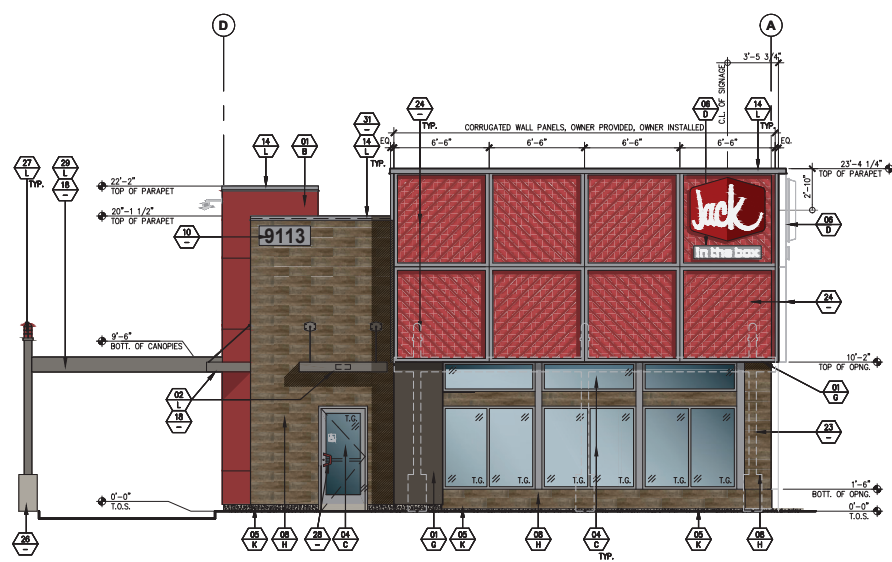


## EXTERIOR ELEVATIONS

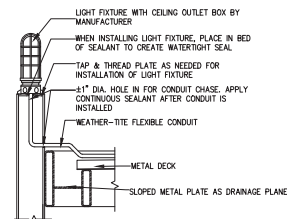
## A4.0



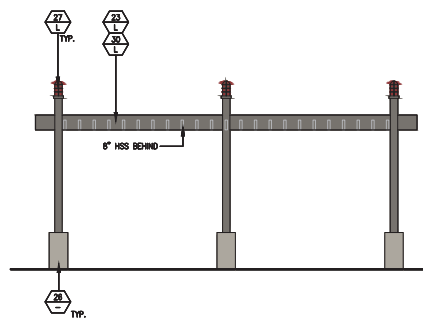
1 EAST EXTERIOR ELEVATION SCALE: 1/4"=1'-0"



2 NORTH EXTERIOR ELEVATION SCALE: 1/4" = 1' - 0"



### CANOPY LIGHT FIXTURE DETAIL



## SHADE STRUCTURE

## EXTERIOR FINISH SCHEDULE

USE CHECKED BOX ONLY

-  MATERIAL/FINISH  
 COLOR
- ☐ ANTI-GRAFFITI COATING: DUMOND CPU647 GRAFFITI BARRIER  
 COAT BY DUMOND CHEMICALS INC. (212) 869-6350  
 COLOR: CLEAR

**MATERIAL/FINISH:**

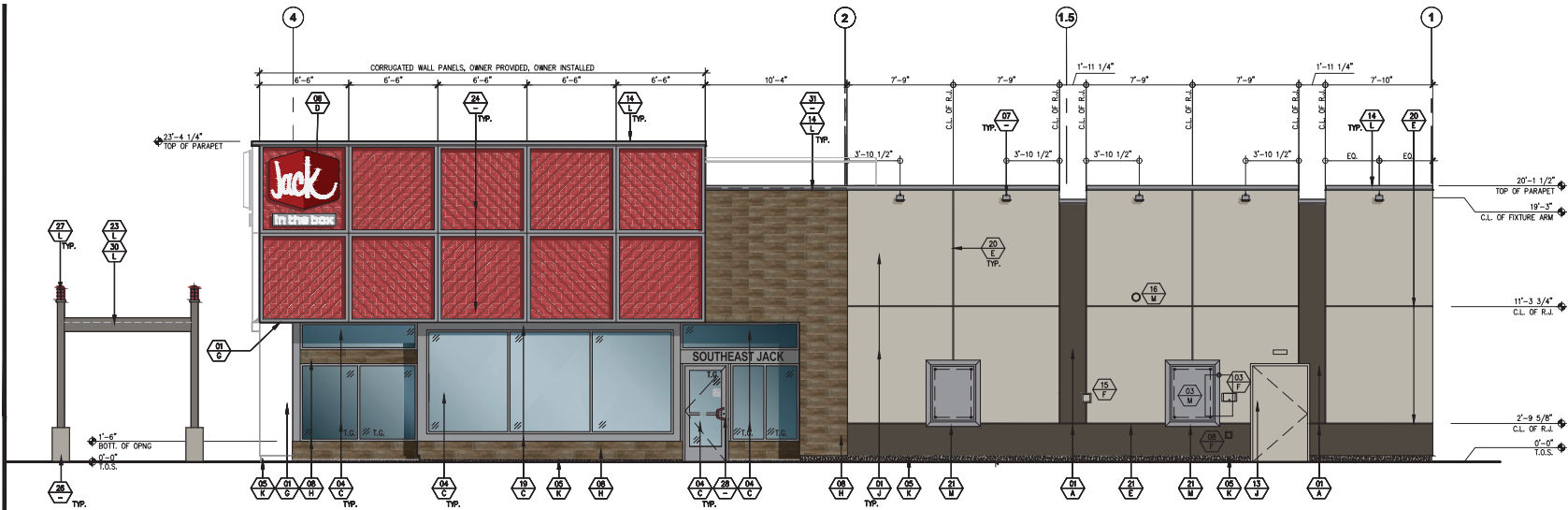
- 01 EXTERIOR CEMENT PLASTER-- SAND FLOAT FINISH  
☐ INTEGRAL COLOR  
☐ SHERWIN WILLIAMS SHERLASTIC 100% ACRYLIC ELASTOMERIC COATING  
☐ EXTERIOR INSULATING FINISHING SYSTEM (EIFS)  
 AS ALTERNATE, CONTRACTOR TO SUBSTITUTE EIFS  
 IN LIEU OF EXTERIOR CEMENT PLASTER
- 02 AWNING/CANOPY & SUPPORTS (BY SIGN CONTRACTOR)  
 03 GREASE TRAP / BULK OIL SYSTEM BOX  
 04 ALUMINUM STOREFRONT SYSTEM
- ☒ 1" CLEAR INSULATED GLASS  
☐ 1" CLEAR INSULATED GLASS  
☐ W/ SOLARBAN 60 COATING  
☐ W/ SOLARBAN 70XL COATING  
☐ ANTI-GRABBIT FILM
- 05 EXTERIOR CEMENT PLASTER FINISH COAT OVER CONCRETE CURB  
 06 INTERNALLY ILLUMINATED SIGNAGE (O.F.O.I., NOT A PART OF THIS PERMIT)  
 07 WALL MOUNTED LIGHT FIXTURE  
 08 8" PORCELAIN WALL TILE  
 09 RECESSED, LOCKABLE, NON-FREEZE HOST-BEhind ENCLOSURE  
 10 ILLUMINATED ADDRESS WITH 12" HIGH LETTERS (PER CITY OF MESA FIRE DETAIL 505.1)  
 11 MAIN ELECTRICAL SERVICE  
 12 LOCKABLE, IRRIGATION CONTROL PANEL  
 13 HOLLOW METAL DOORS AND FRAMES, MISCELLANEOUS TRIM  
 14 ALUMINUM COPING  
 15 CO2 FILL BOX METAL COVER  
 17 DRIVE THRU WINDOW  
 18 MOUNT LIGHTING FIXTURE WITHIN CANOPY  
 19 FEATURE WINDOW POP OUT W/ ALUMINUM BREAK METAL PANELS  
 20 1 1/2" ALUMINUM PLASTER REVEAL  
 21 DISPLAY POSTER PANEL & SURROUND  
 22 EXTERIOR WALL PACK LIGHT FIXTURE  
 23 PERMANENT SHADE STRUCTURE  
 24 CORRUGATED WALL PANELS  
 25 FIBER CEMENT SIDING PANEL  
 26 SMOOTH FINISH CONCRETE BASE  
 27 STEEL POST W/ CUSTOM LIGHT FIXTURE AND BANNER  
 28 DOOR PULL  
 29 DRIVE THRU CANOPY TO SPAN BETWEEN BUILDING AND SUPPORT POST  
 30 12 HES  
 31 LED LIGHT PARAPET CAP

**COLOR:**

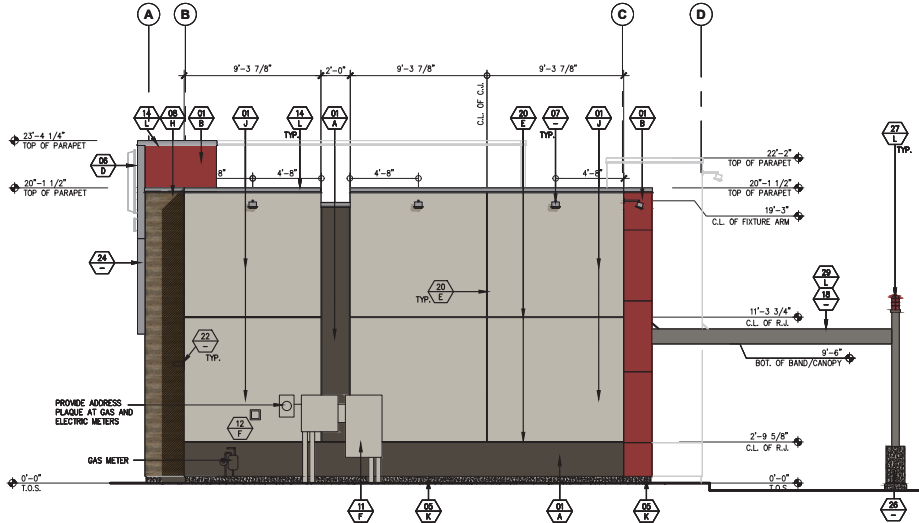
- A SHERWIN WILLIAMS: SW 7020 "BLACK FOX"  
B SHERWIN WILLIAMS: SW 6321 "REDBAY"  
C STANDARD STOREFRONT: CLEAR ANOZIZED  
D WHITE TEXT ON RED BACKGROUND  
E CLEAR ANOZIZED  
F COLOR/FINISH TO MATCH ADJACENT SURFACE  
G SHERWIN WILLIAMS: SW 7020 "BLACK FOX"  
H CROSSVILLE SPEAKEASY AV283, SWEET GEORGIA BROWN, WITH SAND BEIGE H148 GROUT  
I SHERWIN WILLIAMS: SW 7016 "MINDFUL GRAY"  
K NATURAL CONCRETE, GRAY  
L RAL-7039 QUARTZ GREY  
M RAL-7022 UMBERA GREY

### GENERAL NOTES:

1. ALL SIGNAGE IS UNDER SEPARATE SUBMITTAL AND PERMIT (N.I.C.).
2. C.J. = PLASTER CONTROL JOINT
3. ALL PLASTER ACCESSORIES, FLASHING ETC. SHALL BE PAINTED TO MATCH ADJACENT SURFACES.(U.O.N.)
4. ALL EXTERIOR WALL OPENINGS FOR RECEPTACLES, HOSE BIBBS, ETC. SHALL BE SEALED. SEE FLOOR PLAN AND GENERAL NOTES
5. R.J. = 1 1/2" PLASTER REVEAL JOINT



1 WEST EXTERIOR ELEVATION SCALE: 1/4" = 1'-0"



2 SOUTH EXTERIOR ELEVATION SCALE: 1/4" = 1'-0"

EXTERIOR FINISH SCHEDULE USE CHECKED BOX ONLY

- 01 MATERIAL/FINISH COLOR  
02 EXTERIOR CEMENT PLASTER- SAND FLOAT FINISH  
03 INTEGRAL COLOR  
04 SHERWIN WILLIAMS SHERLASTIC 100% ACRYLIC ELASTOMERIC COATING  
05 EXTERIOR INSULATION FINISHING SYSTEM (EIFS)  
06 AS ALTERNATE, CONTRACTOR TO SUBSTITUTE EIFS IN LIEU OF EXTERIOR CEMENT PLASTER  
07 AWNING/CANOPY & SUPPORTS (BY SIGN CONTRACTOR)  
08 GREASE TANK / BULK OIL SYSTEM BOX  
09 ALUMINUM STOREFRONT SYSTEM  
10 1" CLEAR INSULATED GLASS  
11 1" CLEAR INSULATED GLASS W/ SOLARBAN 70XL COATING  
12 1" CLEAR INSULATED GLASS W/ SOLARBAN 60 COATING  
13 EXTERIOR CEMENT PLASTER FINISH COAT OVER CONCRETE CURB  
14 INTERNALLY ILLUMINATED SIGNAGE (O.F.O.I., NOT A PART OF THIS PERMIT)  
15 WALL MOUNTED LIGHT FIXTURE  
16 8" PORCELAIN WALL TILE  
17 RECESSED, LOCKABLE, NON-FREEZE HOSE-BIB ENCLOSURE  
18 ILLUMINATED ADDRESS WITH 12" HIGH LETTERS WITH A 2" STROKE (PER CITY OF MESA FIRE DETAIL 505.1)  
19 MAIN ELECTRICAL SERVICE  
20 LOCKABLE, IRRIGATION CONTROL PANEL  
21 HOLLOW METAL DOORS AND FRAMES, MISCELLANEOUS TRIM  
22 ALUMINUM COPING  
23 CO2 FILL BOX METAL COVER  
24 DRIVE THRU WINDOW  
25 MOUNT LIGHTING FIXTURE WITHIN CANOPY  
26 FEATURE WINDOW POP OUT W/ ALUMINUM BREAK METAL PANELS  
27 1 1/2" ALUMINUM PLASTER REVEAL  
28 DISPLAY POSTER PANEL & SURROUND  
29 EXTERIOR WALL PACK LIGHT FIXTURE  
30 PERMANENT SHADE STRUCTURE  
31 CORRUGATED WALL PANELS  
32 FIBER CEMENT SIDING PANEL  
33 SMOOTH FINISH CONCRETE BASE  
34 STEEL POST W/ CUSTOM LIGHT FIXTURE AND BANNER  
35 DOOR PULL  
36 DRIVE THRU CANOPY TO SPAN BETWEEN BUILDING AND SUPPORT POST  
37 12" HSS  
38 LED LIGHT PARAPET CAP
- COLOR:  
A SHERWIN WILLIAMS: SW 7020 "BLACK FOX"  
B SHERWIN WILLIAMS: SW 6321 "REDBAY"  
C STANDARD STOREFRONT: CLEAR ANODIZED  
D WHITE TEXT ON RED BACKGROUND  
E CLEAR ANODIZED  
F COLOR/FINISH TO MATCH ADJACENT SURFACE  
G SHERWIN WILLIAMS: SW 7020 "BLACK FOX"  
H CROSSVILLE SPEAKEASY AV283, SWEET GEORGIA BROWN, WITH SAND BEIGE H148 GROUT  
I SHERWIN WILLIAMS: SW 7016 "MINDFUL GRAY"  
J NATURAL CONCRETE, GRAY  
K RAL-7039 QUARTZ GREY  
L RAL-7022 UMBRA GREY
- GENERAL NOTES:  
1. ALL SIGNAGE IS UNDER SEPARATE SUBMITTAL AND PERMIT (N.L.C.).  
2. C.J. = PLASTER CONTROL JOINT  
3. ALL PLASTER ACCESSORIES, FLASHING ETC. SHALL BE PAINTED TO MATCH ADJACENT SURFACES (U.O.N.)  
4. ALL EXTERIOR WALL OPENINGS FOR RECEPTACLES, HOSE BIBBS, ETC. SHALL BE SEALED. SEE FLOOR PLAN AND GENERAL NOTES  
5. R.J. = 1/2" PLASTER REVEAL JOINT

NOTE:  
SEE SHEET A4.0 FOR ADDITIONAL  
EXTERIOR FINISH INFORMATION AND  
DETAILS (TYP.)