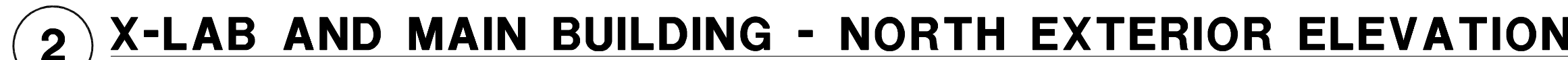




MATERIAL	SYM.	COLOR
PRECAST CONCRETE TILT WALL PANELS w/ RECKLI "SILICA" FORMLINER	F-1	SCOFIELD INTEGRAL COLOR SG "DARK GRANITE" SG890-5
GLASS FIBER REINFORCED CONCRETE PANELS - AMERICAN FIBER CEMENT	F-2	CEMBRIT PATINA "921 FLINT" #P070
STEEL GRATE SCREEN WALL, GATE(S), AND METAL DECK	F-3	GALVANIZED MILL FINISH
12" WIDE 24 GA VERTICAL SMOOTH METAL PANEL	F-4	RMP FP-10 SMOOTH, PAINTED
ALUMINUM CURTAINWALL SYSTEM - ARCADIA T500 - OPG1900 SERIES	F-5	"SATIN ANODIZED"
ALUMINUM CURTAINWALL SYSTEM - ARCADIA T500 - OPG3000 SERIES	F-6	"SATIN ANODIZED"
ALUMINUM STOREFRONT SYSTEM - ARCADIA AF450+ SERIES	F-7	"SATIN ANODIZED"
1" INSULATED LOW 'E' VISION GLASS - VITRO ARCHITECTURAL GLASS REFLECTIVE GLASS	V-1	"SOLORGREY"
1" INSULATED COATED GLAZING - VITRO ARCHITECTURAL GLASS w/ OPACI-COAT 300	V-2	"BLACK GREY"
PRECAST CONCRETE TILT WALL PANELS, HOLLOW METAL DOORS, EXPOSED STEEL, STEEL GATE TRIM, AND DOWNSPOUT	P-1	DUNN EDWARDS #DEW340 "WHISPER"
CONCRETE-FILLED STEEL PIPE BOLLARD	P-2	SHERWIN WILLIAMS #SW4084 "SAFETY YELLOW"
REVERSE CHANNEL POWDER COATED METAL FIELD TYPE SET	S-1	"BRIGHT WHITE" PANTONE 11-0601 TCX
REVERSE CHANNEL POWDER COATED METAL ACCENT TYPE SET	S-2	"COMMUNICATION RED" PANTONE 185C



SCALE: **SEE SHEET A0.1 FOR LEGEND** $3/32" = 1'-0"$



SCALE: **SEE SHEET A0.1 FOR LEGEND** $3/32" = 1'-0"$

B. REMOVE ALL EXISTING SURFACE MOUNTED CANOPIES, SIGNAGE MECHANICAL, PLUMBING AND ELECTRICAL DEVICES AND SET ASIDE FOR REUSE.



SCALE: SEE SHEET A0.1 FOR LEGEND 3/32" = 1'-0"



SCALE: SEE SHEET A0.1 FOR LEGEND 3/32" = 1'-0"



SCALE: SEE SHEET A0.1 FOR LEGEND 3/32" = 1'-0"

DIVISION 02 - EXISTING CONDITIONS

201. EXISTING BUILDING BEYOND.

DIVISION 03 - CONCRETE

301. ALIGN NEW REVEAL WITH EXISTING HORIZONTAL REVEAL.

302. PRECAST CONCRETE WALL PANEL - PAINTED, SEE STRUCTURAL DRAWINGS.

303. INTEGRAL-COLORED PRECAST CONCRETE WALL PANEL w/ VERTICAL ROUGH TEXTURED FORMLINER FINISH. SEE STRUCTURAL DRAWINGS

304. PRECAST CONCRETE HORIZONTAL BEVEL REVEAL - PAINTED.

305. PRECAST CONCRETE VERTICAL PANEL JOINT w/ PRECAST JOINT CAULKING.

306. PRECAST CONCRETE WALL PANEL BEYOND.

307. ALIGN NEW PARAPET WITH EXISTING PARAPET.

308. PRECAST CONCRETE DOUBLE TEE STRUCTURE, SEE STRUCTURAL DRAWINGS.

309. LINE OF FINISH FLOOR BEYOND.

310. CONCRETE STEM WALL, SEE STRUCTURAL DRAWINGS.

311. CONCRETE WALL PANEL SCREEN WALL - PAINTED, SEE STRUCTURAL DRAWINGS.

501. STEEL PIPE GUARD/HANDRAIL - PAINTED, SEE STRUCTURAL DRAWINGS.
502. STEEL BEAM - PAINTED, SEE STRUCTURAL DRAWINGS.
503. STEEL PAN STAIR, BEYOND.
504. STEEL EYELET ON STEEL PLATE, SEE DETAIL ??/A.I.1.?
505. GUARDRAIL BEYOND.
506. STEEL SAFETY EYELET ON STEEL PLATE MOUNTED TO CONCRETE WALL BEHIND SCREEN.
507. 6" DIA. X 4'-0" HIGH CONCRETE-FILLED STEEL PIPE BOLLARD - PAINTED
508. GALVANIZED METAL DECK - SLOPE TO DRAIN, SEE STRUCTURAL DRAWINGS.
509. STEEL COLUMN - PAINTED, SEE STRUCTURAL DRAWINGS.
510. GALVANIZED GRATE SCREEN o/ STRUCTURAL STEEL FRAME - PAINTED.

701. LINE OF ROOF BEYOND.
702. GLASS FIBER REINFORCED CEMENT PANEL (GFRC) BEYOND.
703. GLASS FIBER REINFORCED CEMENT PANEL (GFRC) w/ 1/4" FANE
JOINTS - PREFINISHED.
704. SINGLE-PLY SHEET MEMBRANE ROOFING o/ RIGID INSULATION.
705. METAL SCREEN WALL PANEL - PREFINISHED.

- 0201. HOLLOW METAL DOOR AND FRAME - PAINTED, SEE DOOR SCHEDULE.
- 0202. ROLLING STEEL GATE - PAINTED, SEE DETAIL 10/A17.
- 0203. HOLLOW METAL DOOR(S) BEYOND.
- 0204. GALVANIZED SLIDING SCREEN GATE, SEE DETAIL 6/A17.
- 0205. SLIDING STEEL GRATE SCREEN, SEE DETAIL 10/A17.
- 0206. HIGH-SPEED OVERHEAD DOOR - SPECIFICATION, RYTEC FREDDADOOR OR APPROVED EQUAL, SEE DOOR SCHEDULE.
- 0207. OVERHEAD COILING DOOR BEYOND.
- 0208. OVERHEAD COILING DOOR - PAINTED, SEE DOOR SCHEDULE.
- 0209. SECTIONAL OVERHEAD DOOR - PAINTED, SEE DOOR SCHEDULE.
- 0210. ALUMINUM STOREFRONT ENTRANCE w/ 1" LOW E' INSULATED FULL LITE GLAZING.
- 0211. ALUMINUM STOREFRONT WINDOW SYSTEM w/ 1" LOW E' INSULATED GLAZING.
- 0212. ALUMINUM CURTAINWALL SYSTEM w/ 1" LOW E' INSULATED GLAZING.
- 0213. NEW ALUMINUM STOREFRONT w/ 1" LOW E' INSULATED GLAZING BEYOND.
- 0214. ALUMINUM CURTAINWALL SYSTEM w/ 1" INSULATED SPANDREL GLAZING.

1001. 18 GAUGE PIN MOUNTED, BACKLIT, REVERSE CHANNEL POWDER COATED METAL LETTERS. MOUNT 4" AWAY FROM OUTER MOST SURFACE

1101. DOCK BUMPERS, SPECIFICATION: KELLEY OR APPROVED EQUAL.

1102. DOCK LEVELER, SPECIFICATION: ENERGY GUARD OR APPROVED
EQUAL.

1103. DOCK SEAL, SPECIFICATION: AQUASHIELD OR APPROVED EQUAL

2601. WALL-MOUNTED LIGHT FIXTURE, SEE ELECTRICAL DRAWINGS.
2602. LIGHT FIXTURE BEYOND.

3101. FINISH GRADE, SEE CIVIL DRAWINGS

3201. CONCRETE RAMP. SEE STRUCTURAL DRAININGS.

3202. CAST-IN-PLACE CONCRETE STAIR / STEPS - SEALED, SEE CIVIL DRAININGS.

3203. CONCRETE LANDING - SEALED, SEE STRUCTURAL DRAININGS.

3204. 6" CONCRETE CURB. SEE CIVIL DRAININGS.

3205. LINE OF CONCRETE PAVING. SEE CIVIL DRAININGS.

3206. LINE OF ASPHALT PAVING. SEE CIVIL DRAININGS.

3207. CAST-IN-PLACE CONCRETE RETAINING WALL - PAINTED, SEE STRUCTURAL DRAININGS.