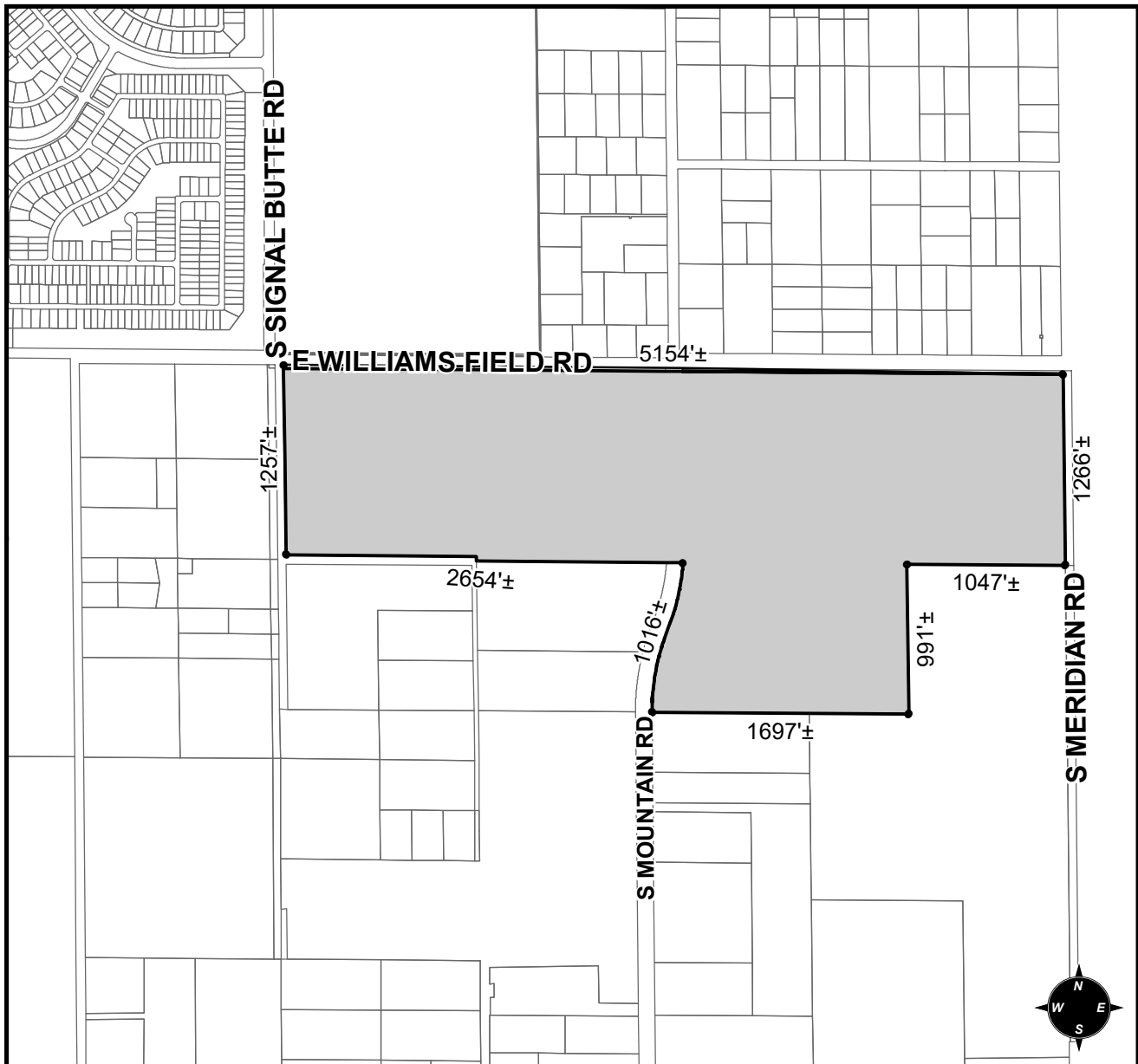




# OFFICIAL SUPPLEMENTARY ZONING MAP AMENDING THE CITY OF MESA ZONING MAP



CASE: ZON18-00933

ACREAGE: 203±

REQUEST: REZONE TO MODIFY AN EXISTING PAD

ORDINANCE: \_\_\_\_\_

Please be advised that the attached zoning changes were approved by the Mesa City Council on \_\_\_\_\_, 2019 by Ordinance # \_\_\_\_\_. If you have any questions concerning these changes, contact the City of Mesa Planning Division at 480-644-2385.

ATTEST: \_\_\_\_\_ DATE: \_\_\_\_\_

MAYOR

CITY CLERK