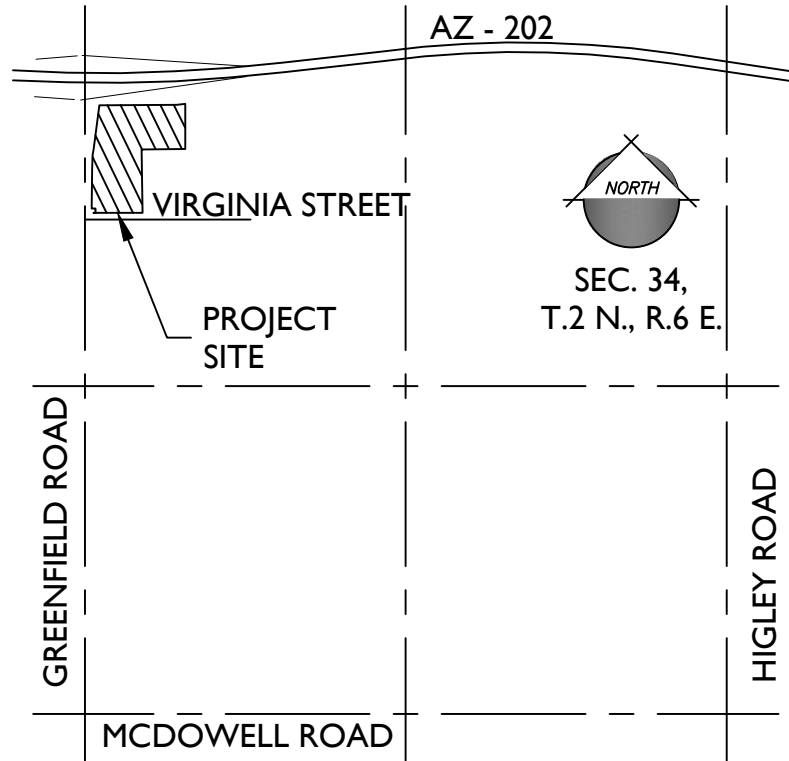


PRELIMINARY GRADING & DRAINAGE PLAN GREENFIELD INDUSTRIAL

A PORTION OF NORTHWEST QUARTER OF THE
NORTHWEST QUARTER OF SECTION 34, TOWNSHIP 2
NORTH, RANGE 6 EAST OF THE GILA AND SALT RIVER
MERIDIAN, MARICOPA COUNTY, ARIZONA

VICINITY MAP

N.T.S.



PROJECT TEAM

DEVELOPER:
COMMENCE CONSTRUCTION CO., L.P.
2555 E. CAMELBACK RD., STE. 740
PHOENIX, AZ 85016
TEL: (602)-369-3001
CONTACT: JIM TSCHILAR
JTschilar@commencecp.com

**PLANNER, ENGINEER, AND
LANDSCAPE ARCHITECT:**
EPS GROUP, INC.
1130 N. ALMA SCHOOL ROAD, SUITE 120
MESA, AZ 85201
TEL: (480)-503-2258
FAX: (480)-503-2258
CONTACT: DANIEL AUXIER
daniel.auxier@epsgruoinc.com

BASIS OF BEARING

GREENFIELD ROAD ALSO BEING THE WEST LINE OF THE NORTHWEST QUARTER
OF SECTION 34, T2N, R6E, MARICOPA COUNTY, AS SHOWN ON A FINAL PLAT OF
RECORD "FALCON INDUSTRIAL PARK, UNITS I & II", BOOK 233, PAGE 12 M.C.R.

BEARING = (NORTH 00°02'03" WEST)

BENCHMARK

CITY OF MESA BRASS TAG IN TOP OF CONCRETE AT THE SOUTHWEST CORNER
OF GREENFIELD ROAD & McDOWELL ROAD.

ELEVATION = 1365.04' (NAVD 88' DATUM)

FLOOD ZONE INFORMATION

THIS PROJECT IS LOCATED WITHIN ZONE X OF THE F.E.M.A. FLOOD INSURANCE
RATE MAP, MAP #04013C27280L, DATED OCT. 16 2013. ZONE X IS DEFINED AS:
AREAS OF 0.2% ANNUAL CHANCE FLOOD; AREAS OF 1% ANNUAL CHANCE FLOOD
WITH AVERAGE DEPTHS OF LESS THAN 1 FOOT OR WITH DRAINAGE AREAS LESS
THAN 1 SQUARE MILE; AND AREAS PROTECTED BY LEVEES FROM 1% ANNUAL
CHANCE FLOOD.

100-YR RUNOFF & RETENTION CALCULATIONS:

VOLUME REQUIRED:

$$V_{REQ} = C * D * A / 12$$

WHERE:

V_{REQ} = RUNOFF VOLUME (SF)

C = COMPOSITE RUNOFF COEFFICIENT = 0.90

D = 100-YR, 2-HR RAINFALL DEPTH (IN) = 2.20-IN

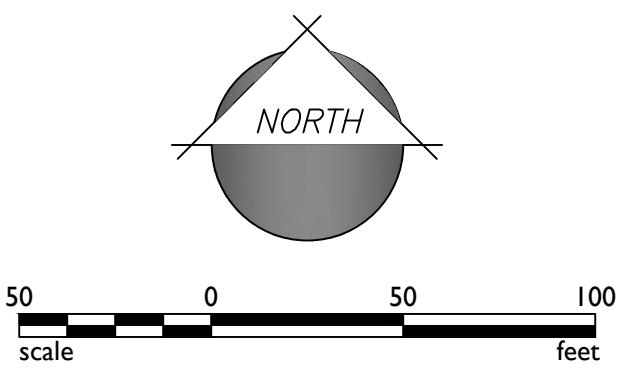
A = AREA (SF)

BASIN ID	Dia.	Length	AREA (SF)	Runoff Coefficient	V_{REQ} (CF)	V_P (CF)	EXCESS VOLUME (CF)
UGR1	10'	968'	460,590	0.9	75,997	76,027	30
UGR2	10'	52'	23,902	0.9	3,944	4,084	140

NOTE:

UGR1 TANKS #1, #2, & #3 ARE EQUALIZED TOGETHER TO HANDLE THE REQUIRED
VOLUME FOR BASIN UGR1 REQUIRED VOLUME.

UNDERGROUND STORAGE TANKS ARE DEWATERED VIA MECHANICAL PUMP AND
DISCHARGE INTO THE BACK OF AN EXISTING CITY OF MESA CATCH BASIN.



1130 N Alma School Road
Suite 120
Mesa, AZ 85201
T:480.503.2250 | F:480.503.2258
www.epsgruoinc.com

EPS GROUP

Project: Greenfield Industrial

Revisions:

Design: TB
Drawn by: TB

Professional Engineer Seal for Daniel B. Auxier, No. 50291, State of Arizona.

Job No.
18-607

C300

Sheet No.
1
of 2

Feb 19, 2019 3:21pm S:\Projects\2018\18-607\Civil_Preliminary_G&D\18-607 - C301.dwg

