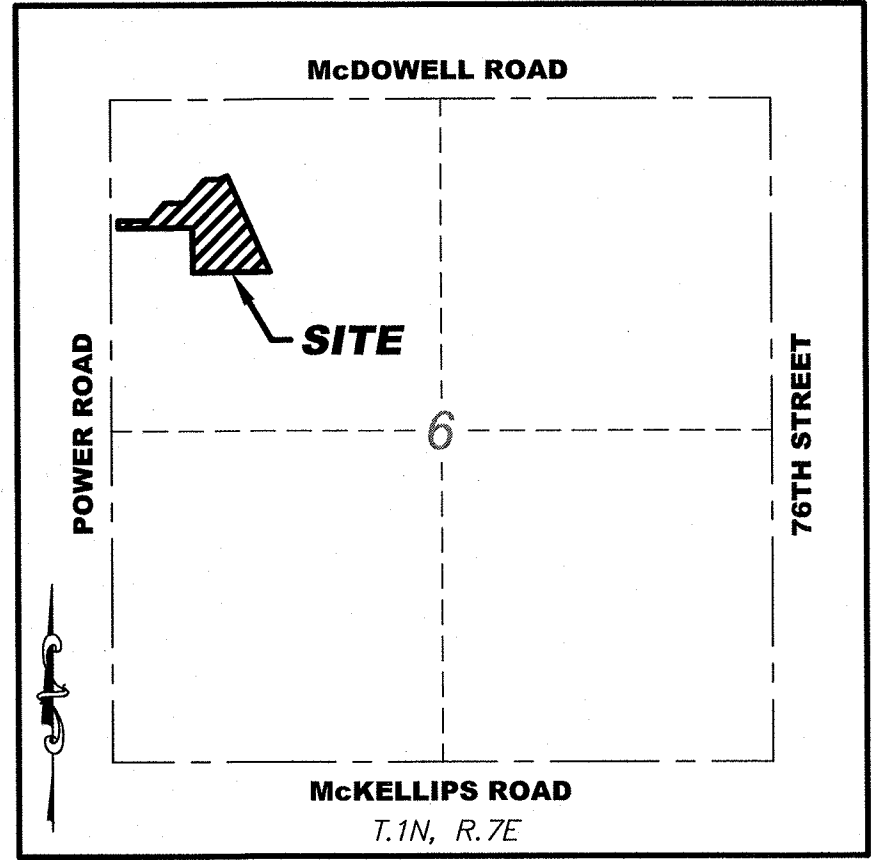




SPRINGS AT RED MOUNTAIN

PRELIMINARY PLAT

A PORTION OF THE NORTHWEST QUARTER OF SECTION 6,
TOWNSHIP 1 NORTH, RANGE 7 EAST OF THE GILA AND SALT
RIVER BASE AND MERIDIAN, MARICOPA COUNTY, ARIZONA.



VICINITY MAP

N.T.S.

LEGAL DESCRIPTION

THE LAND REFERRED TO HEREIN BELOW IS SITUATED IN THE COUNTY OF MARICOPA, STATE OF ARIZONA, AND IS DESCRIBED AS FOLLOWS:

UNITS 1001 THROUGH 1138, INCLUSIVE, AND TRACT A, AQUILA LAS SENDAS, A RESIDENTIAL CONDOMINIUM, AS CREATED BY THAT CERTAIN DECLARATION OF CONDOMINIUM RECORDED IN DOCUMENT NO. 2007-0805502, AND ACCORDING TO THE PLAT OF RECORD IN THE OFFICE OF THE COUNTY RECORDER OF MARICOPA COUNTY, ARIZONA, IN BOOK 915 OF MAPS, PAGE 28.

TOGETHER WITH A PROPORTIONATE INTEREST IN THE COMMON ELEMENTS AS SET FORTH IN SAID DECLARATION AND AS SHOWN ON THE PLAT.

BASIS OF BEARING

THE WEST LINE OF THE NORTHWEST QUARTER OF SECTION 6, AS SHOWN IN BOOK 915, PAGE 28, MARICOPA COUNTY RECORDS. SAID LINE BEARS SOUTH 00 DEGREES 36 MINUTES 50 SECONDS WEST.

NOTES

CONSTRUCTION WITHIN EASEMENTS, EXCEPT BY PUBLIC AGENCIES AND UTILITY COMPANIES, SHALL BE LIMITED TO UTILITIES AND WOOD, WIRE AND REMOVABLE SECTION TYPE FENCING.

AREA

SUBJECT PROPERTY CONTAINS 454,380 SQUARE FEET OR 10.431 ACRES, MORE OR LESS.

OWNER

AQUILA LAS SENDAS LLC
9339 E. PARAISO, SUITE 18
SCOTTSDALE, ARIZONA 85255
CONTACT: RICHARD LLOYD
PHONE: (480) 585-2466
FAX: (480) 585-0088

DEVELOPER

CONTINENTAL 452 FUND LLC
W134 N8675 EXECUTIVE PARKWAY
MENOMONEE FALLS, WI 53051
CONTACT: ERIC GUMM
PHONE: (262) 502-5500

CIVIL ENGINEER

MANHARD CONSULTING, LTD
7600 E. ORCHARD ROAD, SUITE 350-S
GREENWOOD VILLAGE, CO 80111
CONTACT: CHRIS SHANDOR
PHONE: (303) 531-3232

SURVEYOR

SURVEY INNOVATION GROUP, INC.
22425 N. 16TH STREET, SUITE 1
PHOENIX, ARIZONA 85024
CONTACT: JASON SEGNERI
PHONE: (480) 922-0780

SHEET INDEX

NO.	DESCRIPTION
1	PRELIMINARY PLAT COVER SHEET
2	PRELIMINARY PLAT

BENCHMARK

FOUND BRASS TAG ON TOP OF CURB AT THE SOUTHWEST CORNER OF POWER ROAD AND MCDOWELL ROAD.

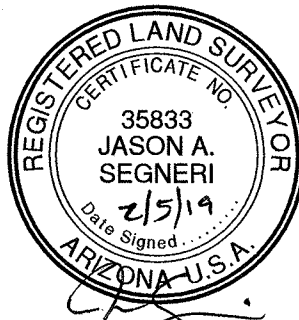
CITY OF MESA DATA
NAVD88 DATUM
ELEVATION = 1552.83'

22425 N. 16TH ST., SUITE 1
PHOENIX, ARIZONA 85024
PHONE (480) 922-0780
FAX (480) 922-0781
WWW.SIGSURVEYAZ.COM

SIG

SURVEY INNOVATION
GROUP, INC
Land Surveying Services

PRELIMINARY PLAT
SPRINGS AT RED MOUNTAIN
MESA, ARIZONA



REVISIONS:

△

△

△

DRAWING NAME:

PRE-PLAT

JOB NO. 18-199

DRAWN: TS

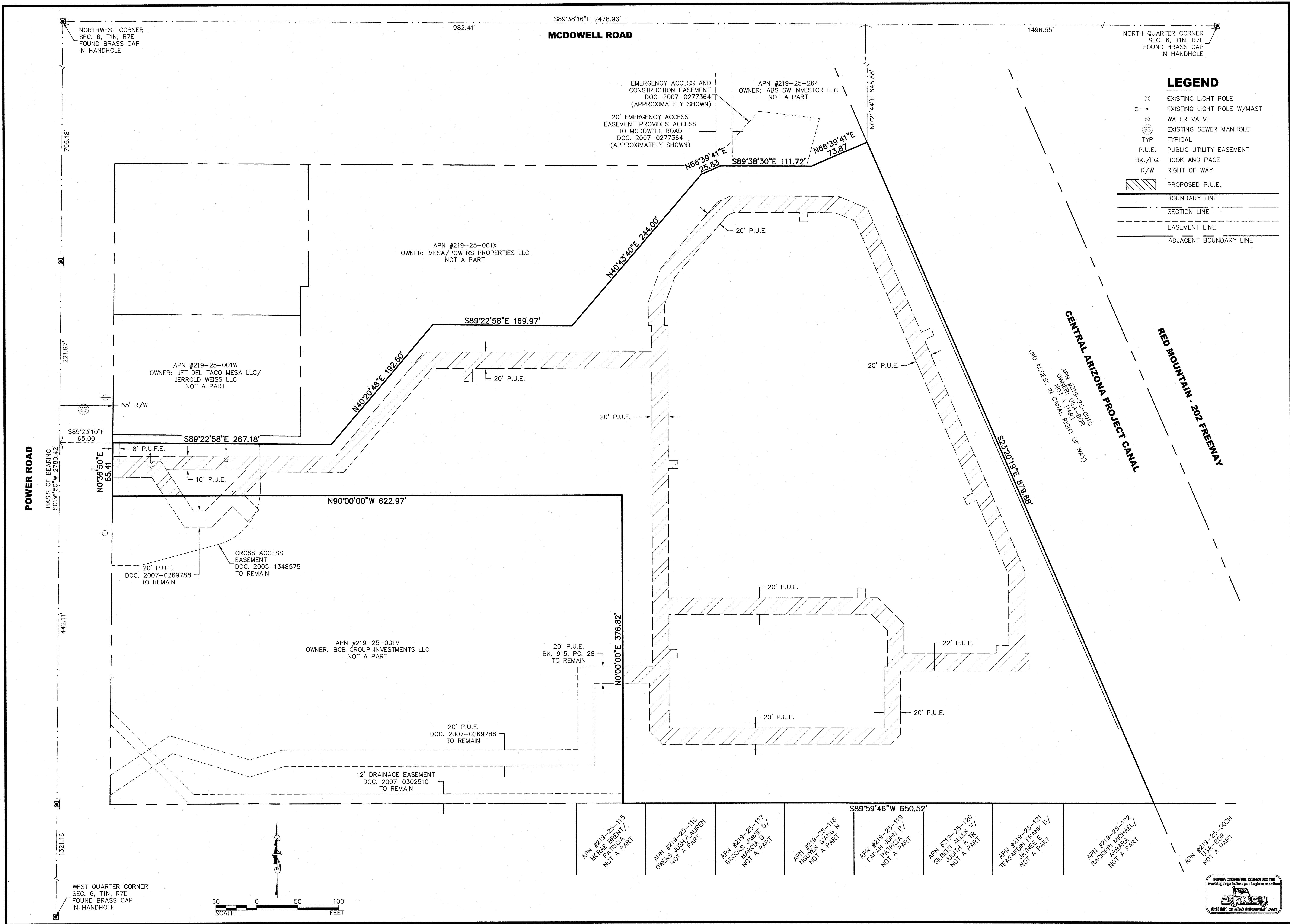
CHECKED: JAS

DATE: 12/03/2018

SCALE: N.T.S.

SHEET: 1 OF 2





22425 N. 16th ST., SUITE 1
PHOENIX, ARIZONA 85024
PHONE (480) 922-0780
FAX (480) 922-0781
WWW.SIGSURVEYAZ.COM

SIG
SURVEY INNOVATION
GROUP, INC.
Land Surveying Services

**PRELIMINARY PLAT
SPRINGS AT RED MOUNTAIN
MESA, ARIZONA**

REVISIONS:

△	
△	
△	

DRAWING NAME: PRE-PLAT
JOB NO. 18-199
DRAWN: TS
CHECKED: JAS
DATE: 12/03/2018
SCALE: 1"=50'
SHEET: 2 OF 2

Ariz. Stat. Ann. § 9-501
Official Seal of the State of Arizona
Seal of the State of Arizona