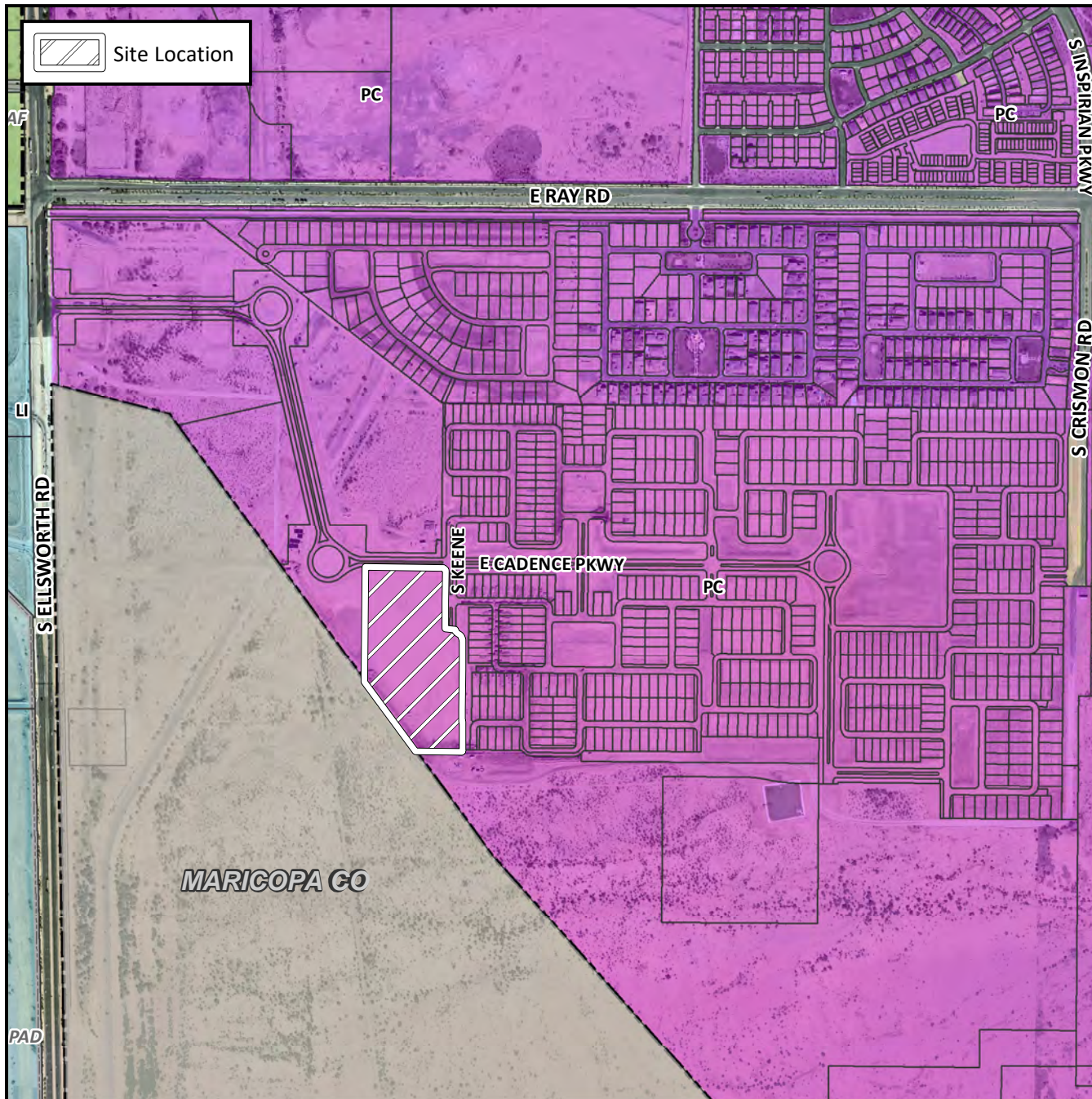


## Final Plat Vicinity Map



## Case Details

### Project:

Parcel J at PPGN

### Site/Address:

(District 6) Within the 9400 to 9600 blocks of East Cadence Parkway (south side); and within the 5400 to 5600 blocks of South Keene (west side). Located south and east of Ellsworth and Ray Roads within the Cadence at Gateway Community.

### Description:

82 PCD single residence lots (9.84± acres).  
PPGN-Ray, LLLP, Developer. Raymond S. Munoz III, EPS Group, Surveyor.

