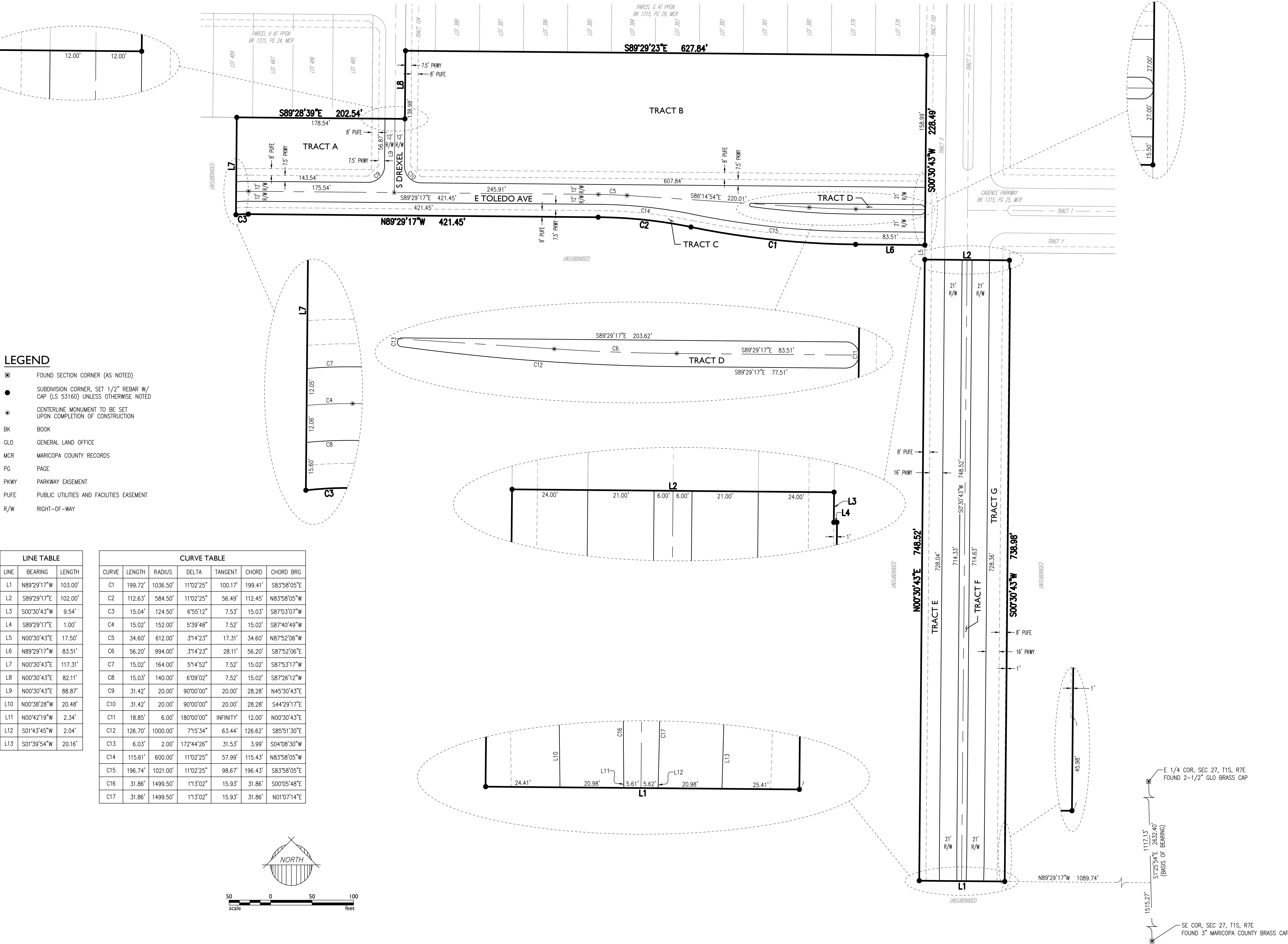
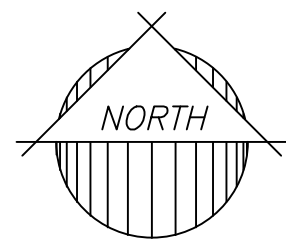


LEGEND

- FOUND SECTION CORNER (AS NOTED)
- SUBDIVISION CORNER, SET 1/2" REBAR W/ CAP (LS 53160) UNLESS OTHERWISE NOTED
- CENTERLINE MONUMENT TO BE SET UPON COMPLETION OF CONSTRUCTION
- BK BOOK
- GLO GENERAL LAND OFFICE
- MCR MARICOPA COUNTY RECORDS
- PG PAGE
- PKWY PARKWAY EASEMENT
- PUFE PUBLIC UTILITIES AND FACILITIES EASEMENT
- R/W RIGHT-OF-WAY

LINE TABLE		
LINE	BEARING	LENGTH
L1	N89°29'17"W	103.00'
L2	S89°29'17"E	102.00'
L3	S00°30'43"W	9.54'
L4	S89°29'17"E	1.00'
L5	N00°30'43"E	17.50'
L6	N89°29'17"W	83.51'
L7	N00°30'43"E	117.31'
L8	N00°30'43"E	82.11'
L9	N00°30'43"E	88.87'
L10	N00°38'28"W	20.48'
L11	N00°42'19"W	2.34'
L12	S01°43'45"W	2.04'
L13	S01°39'54"W	20.16'

CURVE TABLE							
CURVE	LENGTH	RADIUS	DELTA	TANGENT	CHORD	CHORD BRG	
C1	199.72'	1036.50'	11°02'25"	100.17'	199.41'	S83°58'05"E	
C2	112.63'	584.50'	11°02'25"	56.49'	112.45'	N83°58'05"W	
C3	15.04'	124.50'	6°55'12"	7.53'	15.03'	S87°03'07"W	
C4	15.02'	152.00'	5°39'48"	7.52'	15.02'	S87°40'49"W	
C5	34.60'	612.00'	3°14'23"	17.31'	34.60'	N87°52'06"W	
C6	56.20'	994.00'	3°14'23"	28.11'	56.20'	S87°52'06"E	
C7	15.02'	164.00'	5°14'52"	7.52'	15.02'	S87°53'17"W	
C8	15.03'	140.00'	6°09'02"	7.52'	15.02'	S87°26'12"W	
C9	31.42'	20.00'	90°00'00"	20.00'	28.28'	N45°30'43"E	
C10	31.42'	20.00'	90°00'00"	20.00'	28.28'	S44°29'17"E	
C11	18.85'	6.00'	180°00'00"	INFINITY	12.00'	N00°30'43"E	
C12	126.70'	1000.00'	7°15'34"	63.44'	126.62'	S85°51'30"E	
C13	6.03'	2.00'	172°44'26"	31.53'	3.99'	S04°08'30"W	
C14	115.61'	600.00'	11°02'25"	57.99'	115.43'	N83°58'05"W	
C15	196.74'	1021.00'	11°02'25"	98.67'	196.43'	S83°58'05"E	
C16	31.86'	1499.50'	1°13'02"	15.93'	31.86'	S00°05'48"E	
C17	31.86'	1499.50'	1°13'02"	15.93'	31.86'	N01°07'14"E	



CADENCE AT GATEWAY PHASE 2
SCHOOL SITE INFRASTRUCTURE
MESA, ARIZONA

Project:

Revisions:

Call it first two full working days before site begins excavation.

ARIZONA

Drawn by: RSM
Designed by: RSM

53160
RAYMOND S. MUNOZ III
Professional Engineer
No. 17193
Arizona, U.S.A.
Expires 3/31/21

Job No.
18-106

FP01

Sheet No.
2
of 2