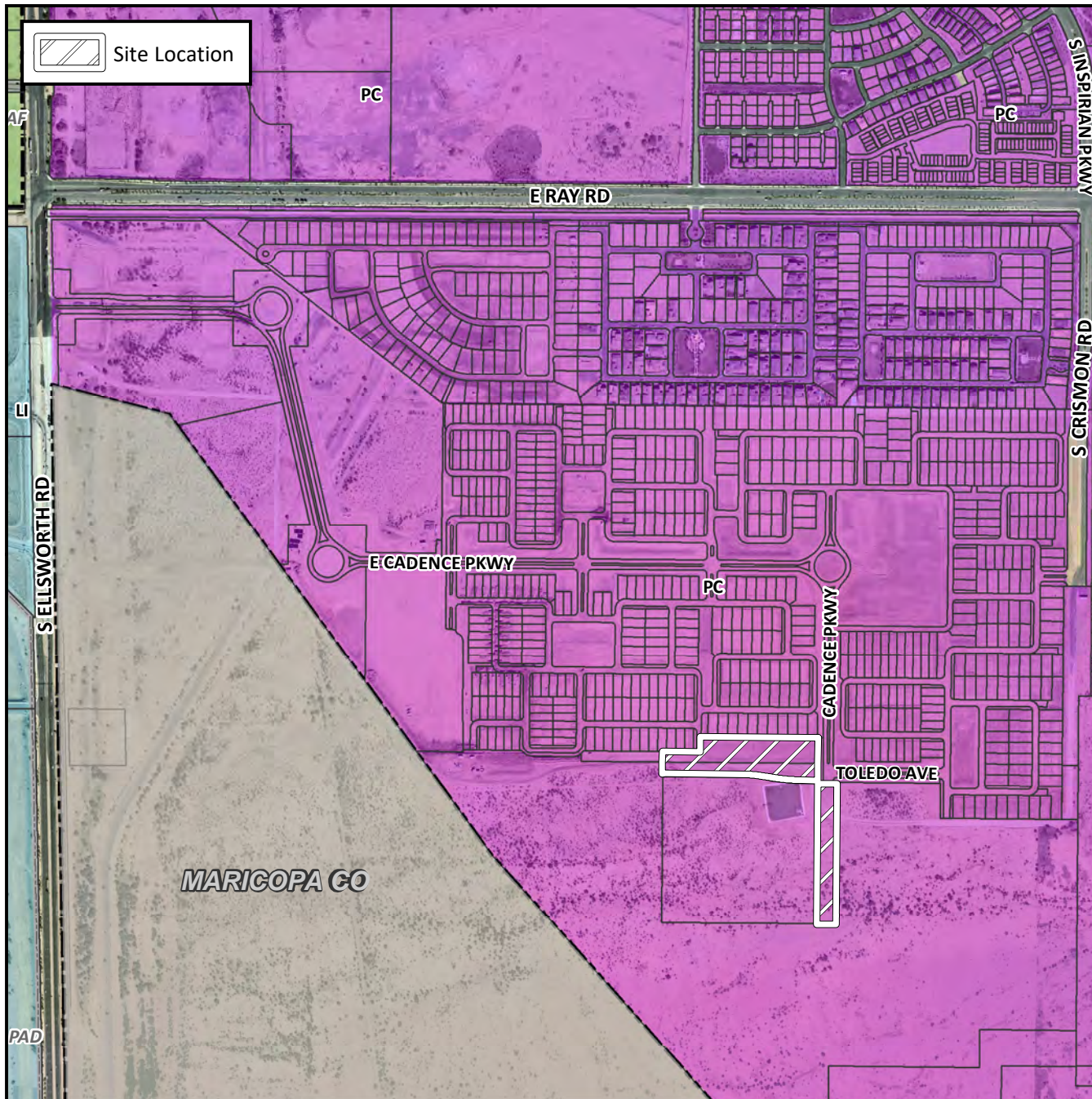


Final Plat Vicinity Map



Case Details

Project:

Cadence at Gateway Phase 2 School Site

Site/Address:

(District 6) The 9600 to 9800 blocks of the East Toledo Avenue alignment (south side); and the 9800 block of the South Cadence Parkway alignment (west side). Located south and east of Ellsworth and Ray Roads within the Cadence at Gateway Community.

Description:

7 PCD Tracts (5.34± acres). PPGN-Ray, LLLP, Developer. Raymond S. Munoz III, EPS Group, Surveyor.

