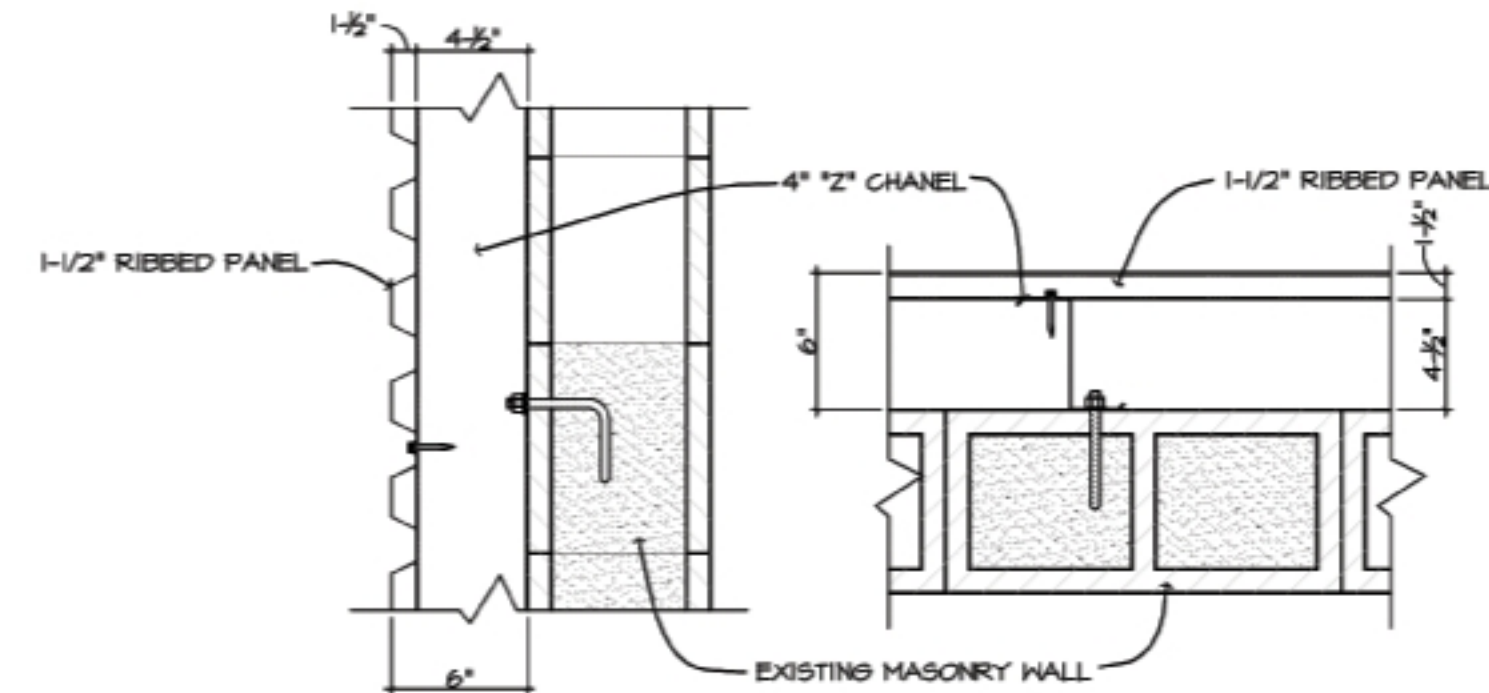
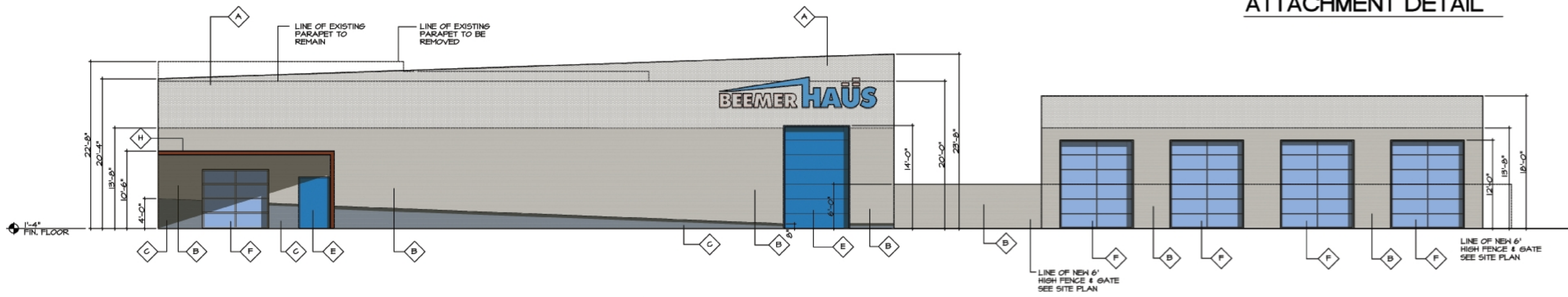


1 SOUTH ELEVATION (street view)
SCALE: 1/8" = 1'-0"



ATTACHMENT DETAIL

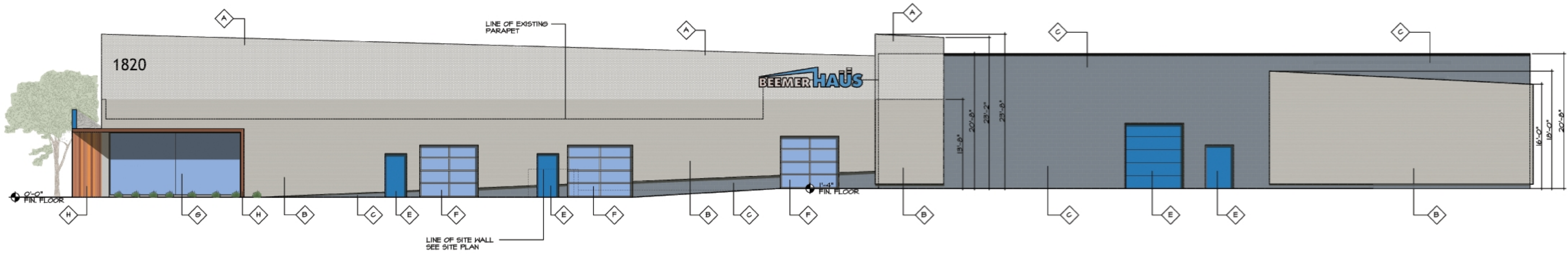


2 SOUTH ELEVATION (interior lot view)
SCALE: 1/8" = 1'-0"

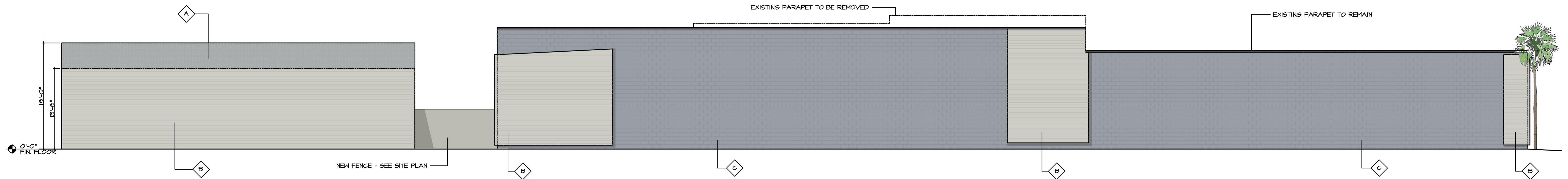
EXTERIOR MATERIALS

- SEE BUILDING MATERIAL COLOR SAMPLES
- A WESTERN RIB PANEL (PERFORATED)
COLOR: GALVALUME
 - B WESTERN RIB PANEL
COLOR: ASH GRAY
 - C EXISTING BLOCK
PAINTED DUNN EDWARDS 6341
 - D SPLITFACE CONCRETE BLOCK SITE WALL - GRAY GRANITE
BORAL CONCRETE SEE SITE PLAN
 - E EXISTING HOLLOW METAL & OVERHEAD DOORS AS INDICATED
COLOR: DUNN EDWARDS 5845
 - F NEW OVERHEAD ALUMINUM & GLASS DOOR BY
OVERHEAD DOOR MODEL 521
 - G SEAMLESS GLASS PANELS BY OVERHEAD DOORS
"THE ENVY COLLECTION"
 - H FRAMED CANOPY GLAD WITH CUMARU WOOD VENEER

REV.
1
2
3



3 EAST ELEVATION
SCALE: 1/8" = 1'-0"



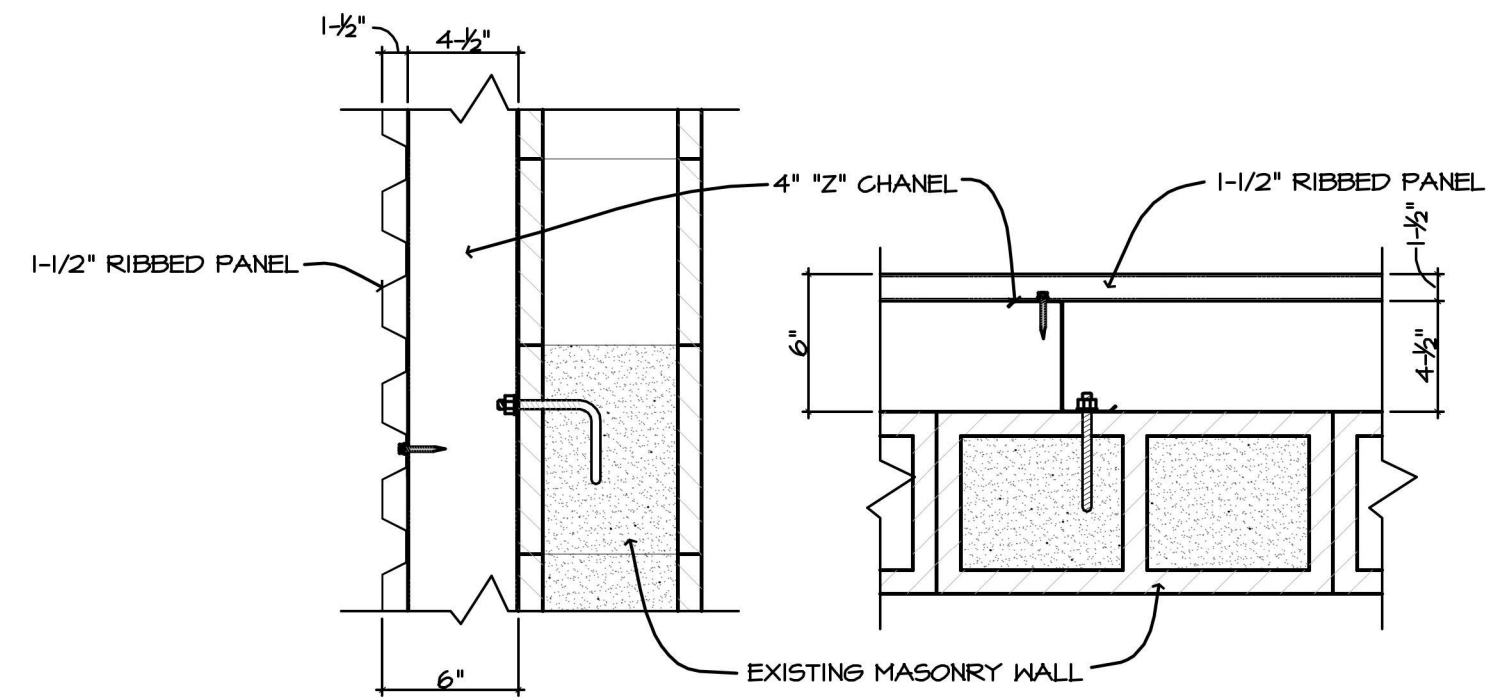
4 NORTH ELEVATION

SCALE: 1/8" = 1'-0"

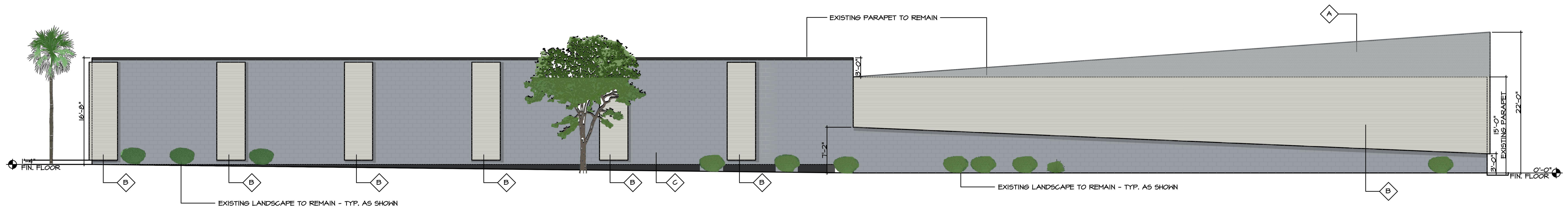
EXTERIOR MATERIALS

SEE BUILDING MATERIAL COLOR SAMPLES

- A WESTERN RIB PANEL (PERFORATED)
COLOR: GALVALUME
- B WESTERN RIB PANEL
COLOR: ASH GRAY
- C EXISTING BLOCK
PAINTED DUNN EDWARDS 6341



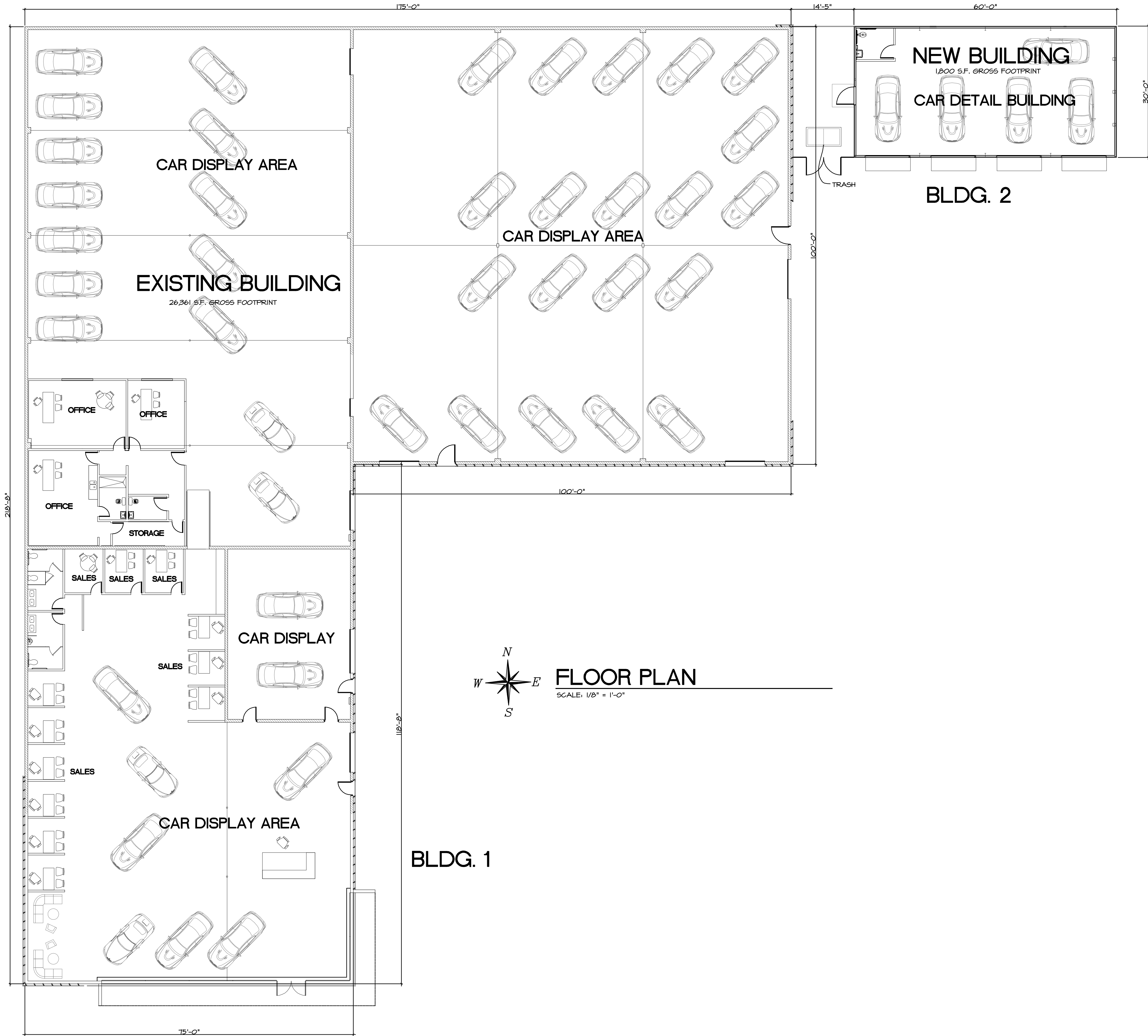
ATTACHMENT DETAIL



5 WEST ELEVATION

SCALE: 1/8" = 1'-0"

REV.
Δ
Δ
Δ



REV.

THIS DRAWING IS AN INSTRUMENT OF SERVICE PREPARED BY DESERT RIDGE DESIGN LLC FOR USE BY THE CLIENT FOR THIS PROJECT ONLY. REPRODUCTION OF THIS DRAWING FOR ANY OTHER PROJECT OR PURPOSE IS PROHIBITED AND IS IN VIOLATION OF ARIZONA REVISED STATUTES § 32-125 (B), (D), and (E) & ARIZONA ADMINISTRATIVE CODE, TITLE 4, CHAPTER 30, § 4-30-304.

