

EXHIBIT "A"
BROWN-ELLSWORTH STORAGE
WATER EASEMENT
LEGAL DESCRIPTION

That portion of the Northeast quarter of Section 16, Township 1 North, Range 7 East, of the Gila and Salt River Base and Meridian, Maricopa County, Arizona, described as follows;

Commencing at a found brass cap in hand-hole at the Northeast corner of said Section 16, from which a found brass cap in hand-hole at the East quarter corner of said Section 16, bears South 00°09' 6" West (Basis of Bearings), a distance of 2640.23 feet;

Thence South 00°09' 6" West along the East line of said Northeast quarter, a distance of 660.06 feet to the Southeast corner of the Northeast quarter of the Northeast quarter of said Northeast quarter of Section 16;

Thence along the South line thereof North 89°53'12" West, a distance of 65.00 feet;

Thence North 00°09'06" East along a line parallel with and 65.00 feet West of said East line of the Northeast quarter of Section 16, a distance of 24.04 feet to the TRUE POINT OF BEGINNING;

Thence South 89°55'41" West, a distance of 431.33 feet;

Thence North 43°00'25" West, a distance of 57.21 feet;

Thence North 00°04'05" West, a distance of 118.02 feet;

Thence North 54°30'04" East, a distance of 453.63 feet;

Thence North 89°42' 3" East, a distance of 67.15 feet;

Thence North 00°00'00" East, a distance of 59.46 feet;

Thence North 89°42' 3" East, a distance of 35.33 feet;

Thence South 00°09' 06" West along a line parallel with and 65.00 feet West of said East line of the Northeast quarter of Section 16, a distance of 20.00 feet;

Thence South 89°42'53" West, a distance of 15.28 feet;

Thence South 00°00'00" West, a distance of 59.46 feet;

Thence South 89°42'53" West, a distance of 80.71 feet;

Thence South 54°30'04" West, a distance of 437.09 feet;

Thence South 00°00'00" East, a distance of 99.53 feet;

Thence South 43°00'25" East, a distance of 40.96 feet;

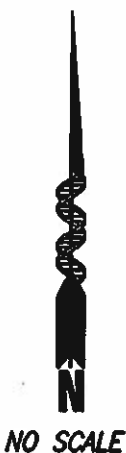
Thence North 89°55'41" East, a distance of 408.83 feet;

Thence North 00°04'19" West, a distance of 37.47 feet;

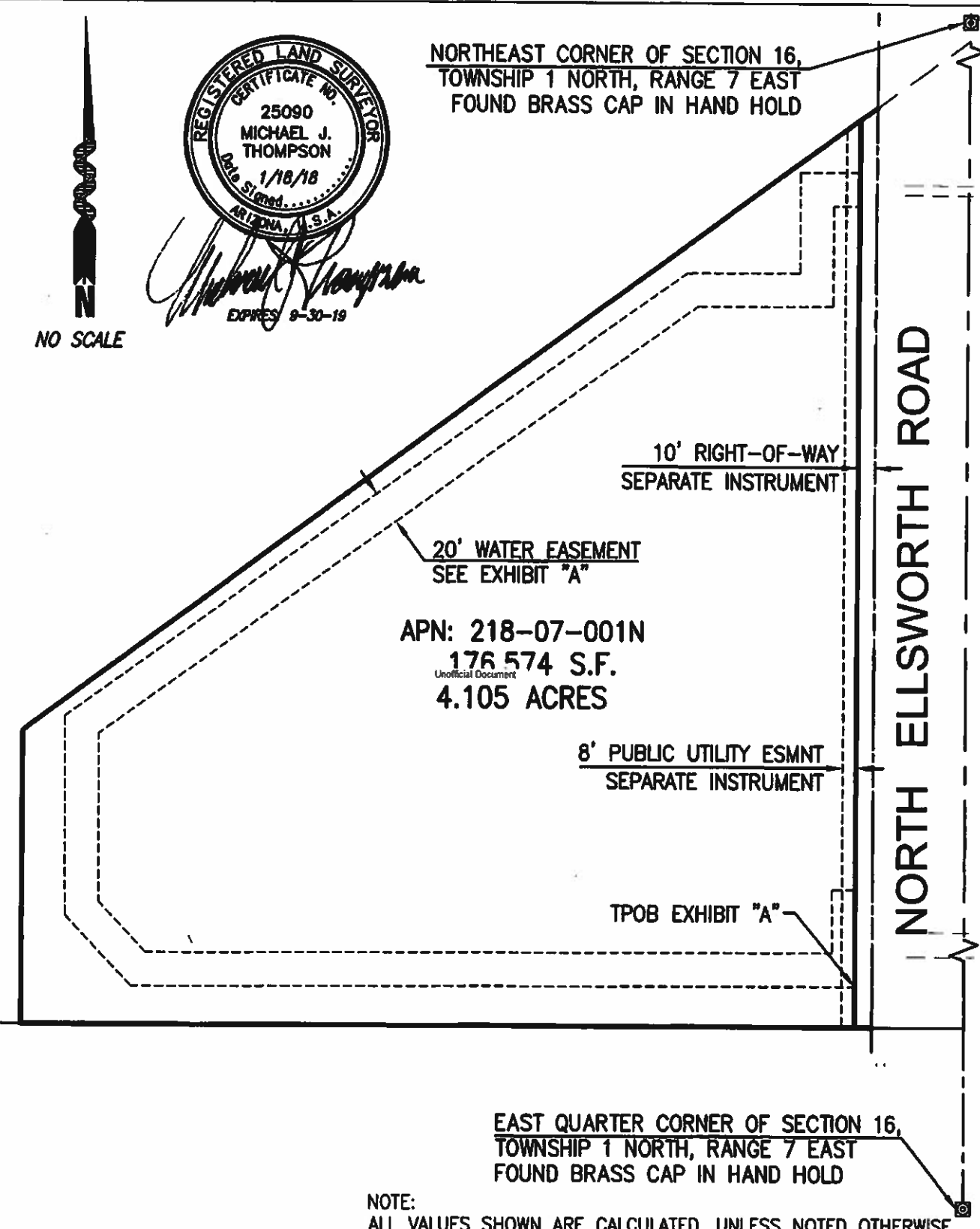
Thence North 89°55'41" East, a distance of 14.04 feet;

Thence South 00°09'06" West along a line parallel with and 65.00 feet West of said East line of the Northeast quarter of Section 16, a distance of 57.47 feet;

Containing 24,285 square feet, or 0.558 acres of land, more or less.



NORTHEAST CORNER OF SECTION 16,
TOWNSHIP 1 NORTH, RANGE 7 EAST
FOUND BRASS CAP IN HAND HOLD



APN: 218-07-001N
176,574 S.F.
4.105 ACRES

10' RIGHT-OF-WAY
SEPARATE INSTRUMENT

20' WATER EASEMENT
SEE EXHIBIT "A"

8' PUBLIC UTILITY ESMNT
SEPARATE INSTRUMENT

TPOB EXHIBIT "A"

NORTH ELLSWORTH ROAD

EAST QUARTER CORNER OF SECTION 16,
TOWNSHIP 1 NORTH, RANGE 7 EAST
FOUND BRASS CAP IN HAND HOLD

NOTE:
ALL VALUES SHOWN ARE CALCULATED, UNLESS NOTED OTHERWISE.

Helix Engineering, LLC

Engineering / Surveying / Consulting
3240 E Union Hills, Suite 112, Phoenix, AZ 85050
(602) 602-788-2616, www.hxeng.com

EXHIBIT "A" DEPICTION
WATER EASEMENT

DRAWN BY: MJT

JAN 18, 2018

JOB No.: 295

CHECKED BY: MJT

SHEET 1 OF 1