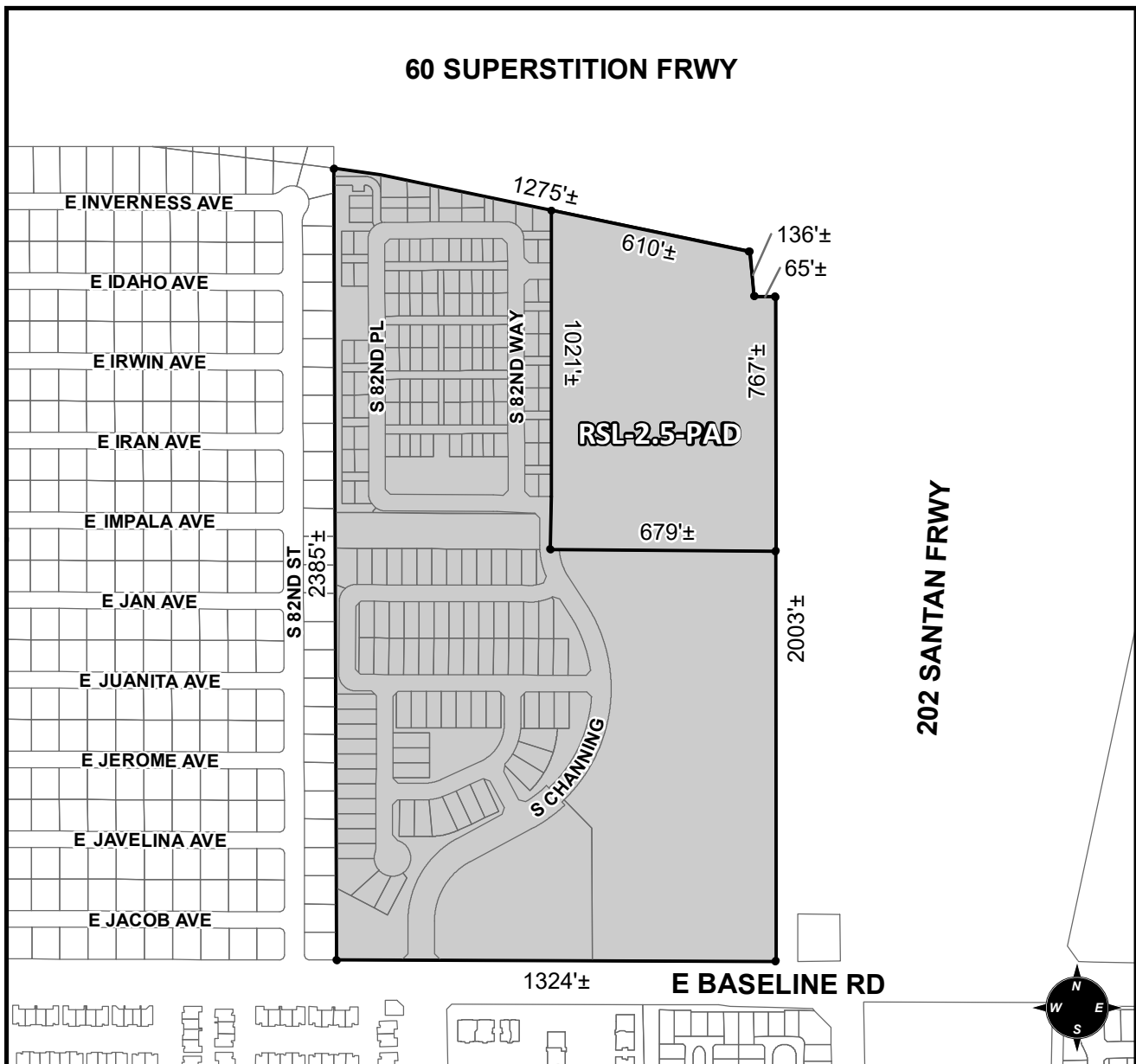




OFFICIAL SUPPLEMENTARY ZONING MAP AMENDING THE CITY OF MESA ZONING MAP



CASE: ZON18-00862

ACREAGE: 68.53±

REQUEST: REZONING 15± ACRES FROM AG TO RSL-2.5-PAD AND INCORPORATING THE ACREAGE INTO THE APPROVED 54± ACRE BASELINE MIXED-USE PAD

ORDINANCE: _____

Please be advised that the attached zoning changes were approved by the Mesa City Council on _____, 2019 by Ordinance # _____. If you have any questions concerning these changes, contact the City of Mesa Planning Division at 480-644-2385.

ATTEST: _____ DATE: _____

MAYOR

CITY CLERK