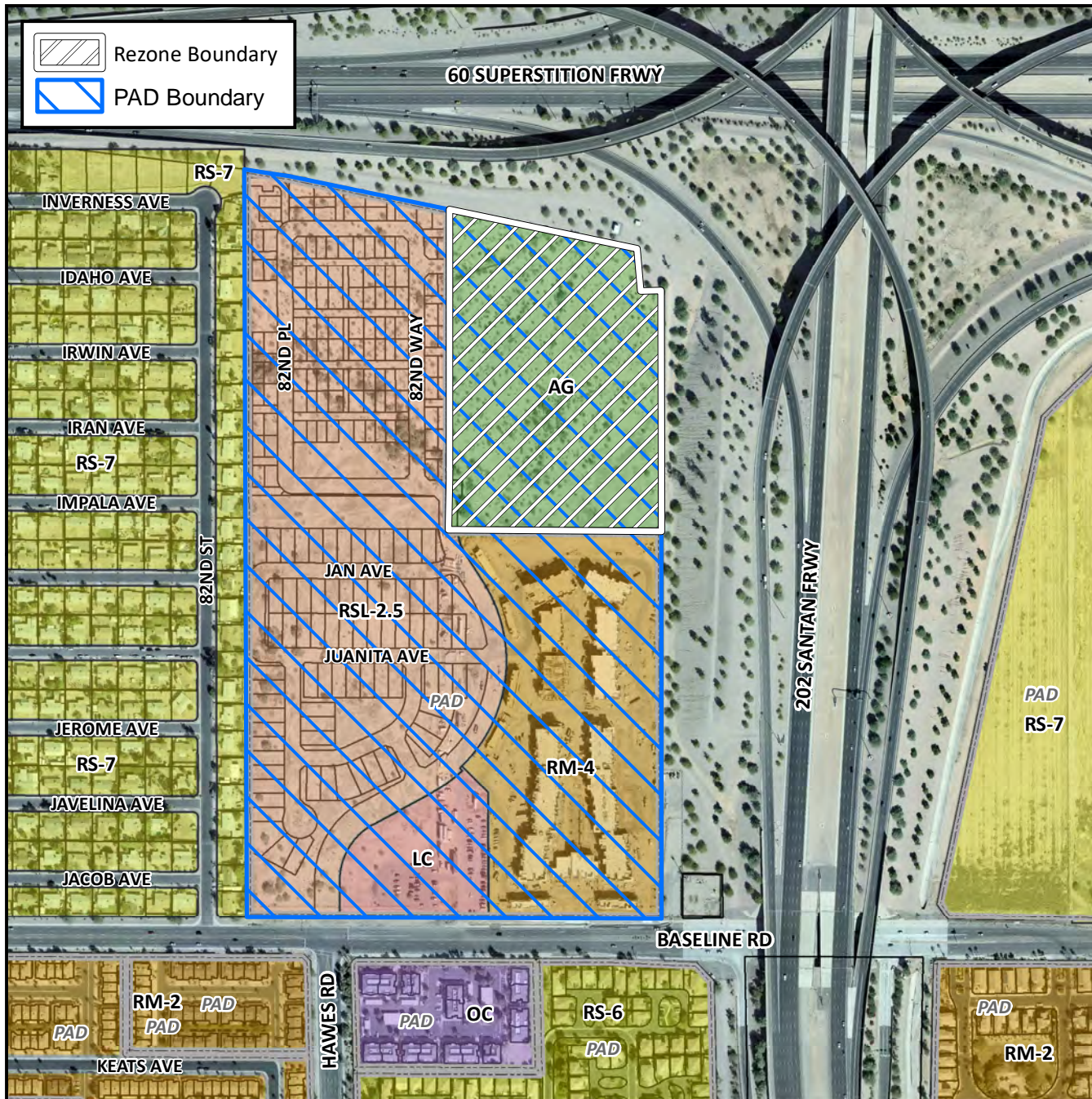


# Planning and Zoning Vicinity Map: ZON18-00862



## Case Details

**CASE:**

ZON18-00862

**PRE-PLAT :** ☒

**SITE / ADDRESS:**

District 6. The 8200 to 8500 blocks of East Baseline Road (north side). Located east of South Channing (Hawes Road) alignment on the north side of Baseline Road. (69± acres)

**REQUEST:**

Rezoning 15± acres from AG to RSL-2.5-PAD incorporating the acreage into the approved 54± acre Baseline Mixed-Use PAD (Z14-021, ZON16-004, ZON17-00326, ZON18-00169 and ZON18-00171); and Site Plan Review. This request will allow for the incorporation of additional acreage into an existing PAD to allow for the development of a residential small-lot subdivision.

