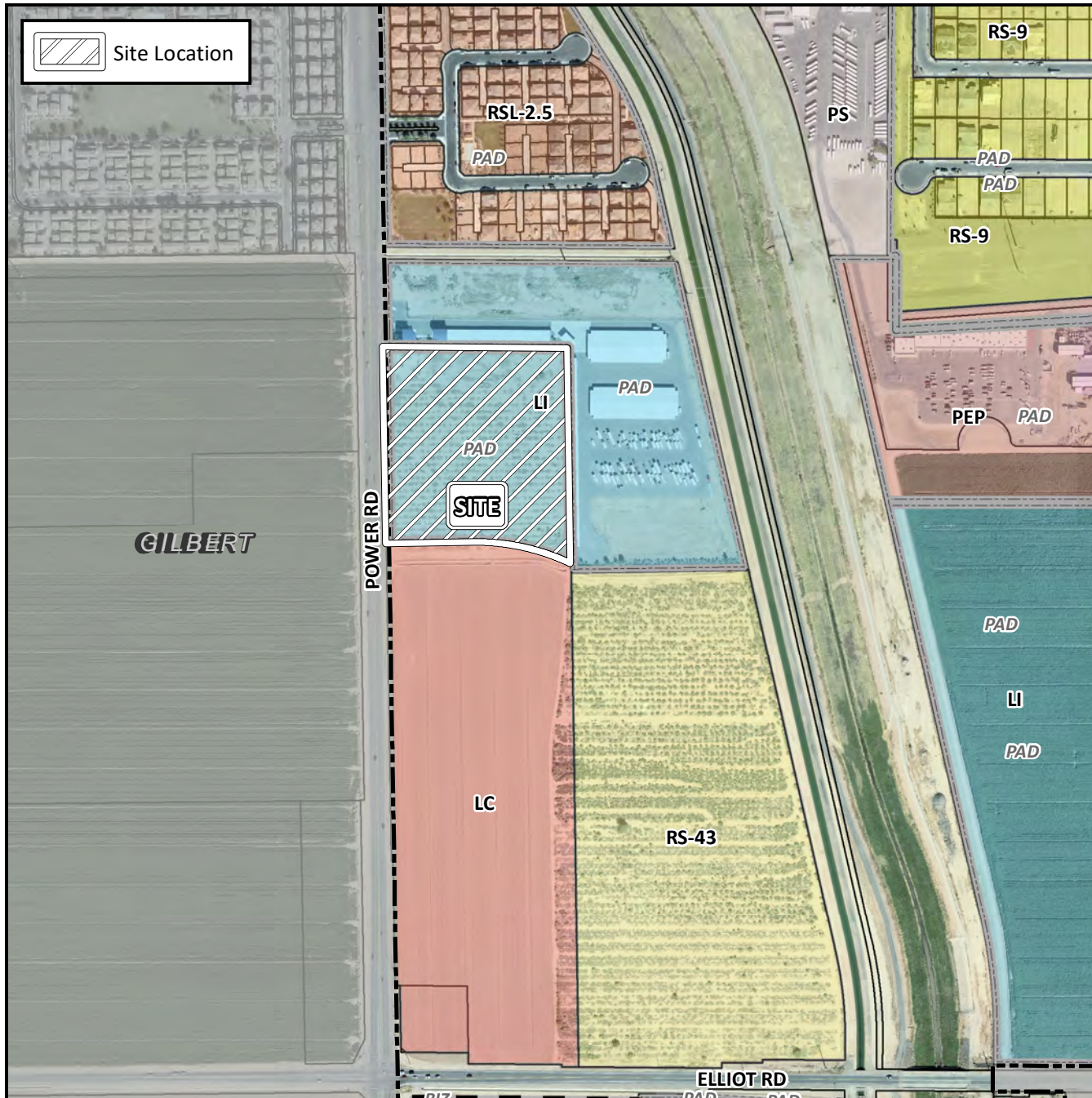


# Planning and Zoning Vicinity Map: ZON18-00689



## Case Details

### CASE:

ZON18-00689

PRE-PLAT : ☐

### SITE / ADDRESS:

District 6. Within the 3200 and 3300 blocks of South Power Road (east side). Located north of Elliot Road on the east side of Power Road. (9± acres).

### REQUEST:

Rezoning from LI-PAD to RM-2-PAD-AF; and Site Plan Review. This request will allow for a multi-residential development.

