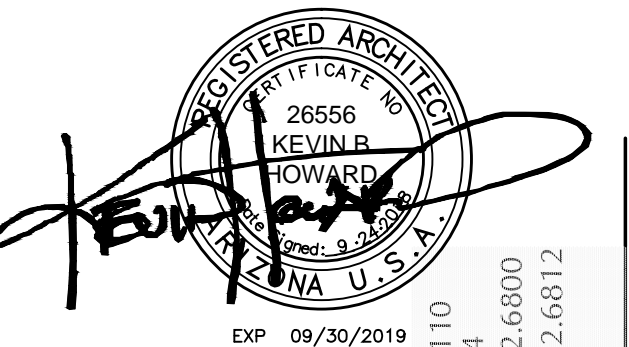


LOCATION MAP
SCALE: N.T.S.



8339 N Oracle Rd Suite 110
Phoenix, Arizona 85028
Phone: 602.327.6800
Fax: 602.327.6812
www.kbharchitect.com

Kevin B Howard
ARCHITECTS
Incorporated AIA

GRANDE Vita
a BioCity Enterprise
10243 E. Hampton Ave, Mesa, Arizona, 85209

Medical Office
Building

© 2018 Kevin B Howard Architects, Inc.
All rights reserved.
THESE DRAWINGS ESTABLISH THE GENERAL
STANDARDS OF QUALITY AND DETAIL FOR
DEVELOPING A CONSTRUCTION CONTRACT.
ALL INFORMATION ON THESE DRAWINGS ARE
THE PROPERTY OF KBH ARCHITECTS AND
ARE INTENDED FOR THIS PROJECT ONLY.

Job: 2017-12
Date: 09.24.2018

REVISIONS:

Drawn By:
J. E. Brown
Checked By:
H.S. Walker
J. E. Brown

KEYNOTES AND SPECIFICATIONS

- A. ALL COLORS, SIZES, AND MATERIALS TO BE VERIFIED WITH ARCHITECT PRIOR TO CONSTRUCTION FOR COORDINATION WITH DRAWINGS.
B. SEE ELECTRICAL PLAN FOR COORDINATION WITH POWER REQUIREMENTS FOR ALL ITEMS.
C. INSTALLERS TO FOLLOW ALL STANDARDS AND RECOMMENDATIONS OF MANUFACTURER SPECIFICATIONS.
D. FOR BUILT-IN CABINETRY REFER TO ARCHITECTURAL INTERIOR ELEVATIONS.
E. SUBMIT ALL SHOP DRAWINGS OR SUBSTITUTE SPECIFICATIONS TO ARCHITECT FOR APPROVAL AND COORDINATION PRIOR TO CONSTRUCTION.
- VITRO ARCHITECTUREAL GLASS PPG SOLARBLUE® GLASS CURTAIN WALL GLAZING SYSTEM
 - VITRO ARCHITECTUREAL GLASS PPG SOLARBLUE® GLASS STORE FRONT GLAZING SYSTEM
 - VITRO ARCHITECTUREAL GLASS PPG SOLARBLUE® GLASSOPERABLE GLAZING SYSTEM
 - *ALUCABOND® METAL PANEL SYSTEM (OR EQUAL)
 - BIFS - "DRYVIT" SYNTHETIC STUCCO SYSTEM (OR EQUAL)
 - PRE-FINISHED METAL FASCIA 22 GAUGE
 - METAL RAILING SYSTEM
 - GLASS RAILING SYSTEM
 - STEEL TRELLIS DETAIL
 - NATURAL STONE VENEER
 - TILE VENEER (CERAMIC OR PORCELAIN)
 - PRE-FINISHED METAL SIDING (22 GAUGE)



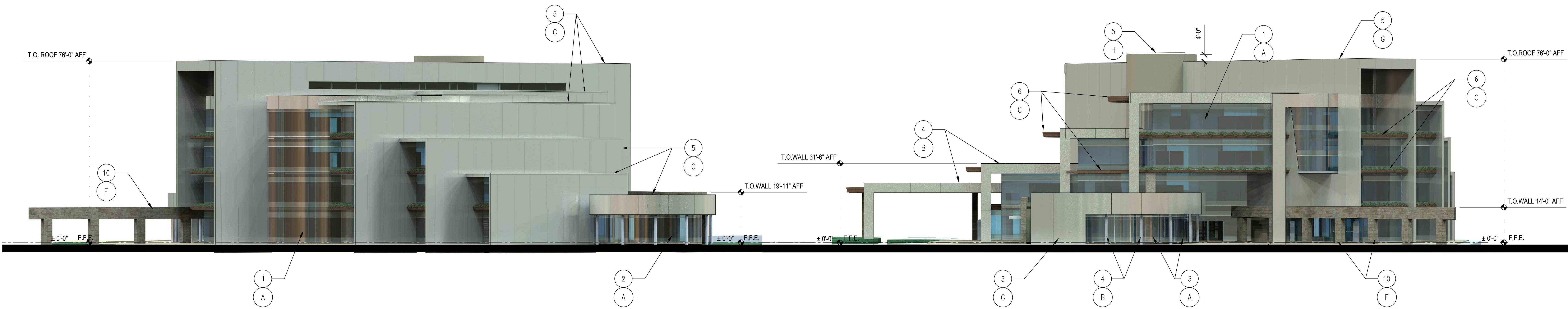
NORTH ELEVATION

SCALE: 1/16" = 1'-0"



EAST ELEVATION

SCALE: 1/16" = 1'-0"



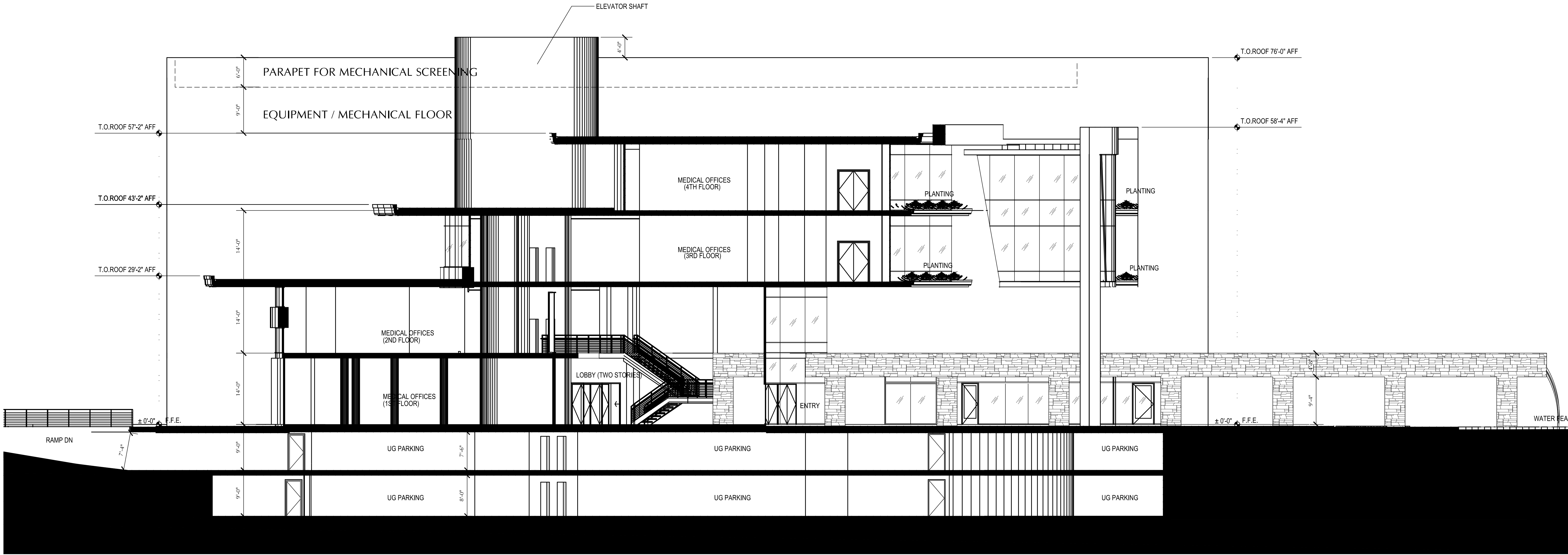
SOUTH ELEVATION

SCALE: 1/16" = 1'-0"



WEST ELEVATION

SCALE: 1/16" = 1'-0"



TRANSVERSE BUILDING SECTION

SCALE: 1/8" = 1'-0"



EARLY CONCEPT IMAGE



	E. SOUTHERN AVE.	
S. CRISMON RD.	<div> <div>PROJECT SITE</div> </div>	S. SIGNAL BUTTE RD.
	SUPERSTITION FWY.	

LOCATION MAP
SCALE: N.T.S.

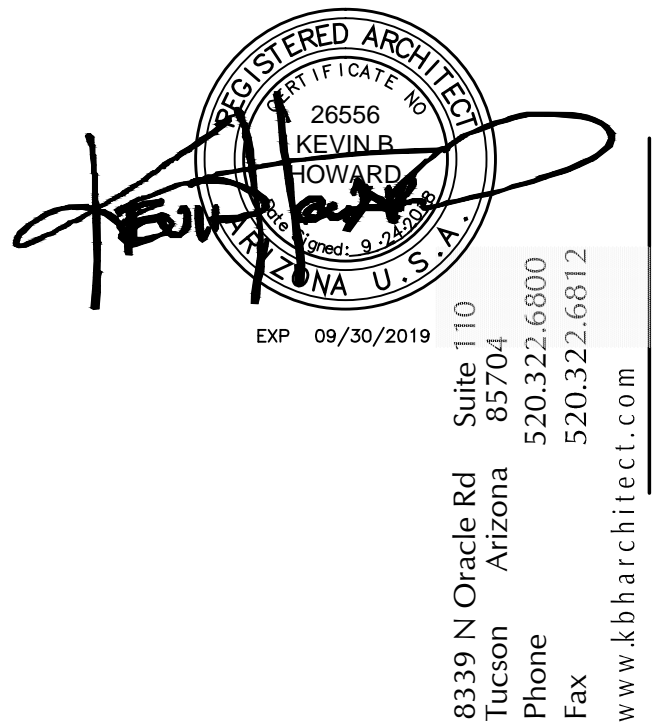


NORTH-EAST ELEVATION
SCALE: 1/16" = 1'-0"



NORTH-WEST ELEVATION
SCALE: 1/16" = 1'-0"

- KEYNOTES AND SPECIFICATIONS**
- A. ALL COLORS, SIZES, AND MATERIALS TO BE VERIFIED WITH ARCHITECT PRIOR TO CONSTRUCTION FOR COORDINATION WITH DRAWINGS.
- B. SEE ELECTRICAL PLAN FOR COORDINATION WITH POWER REQUIREMENTS FOR ALL ITEMS.
- C. INSTALLERS TO FOLLOW ALL STANDARDS AND RECOMMENDATIONS OF MANUFACTURER SPECIFICATIONS.
- D. FOR BUILT-IN CABINETRY, REFER TO ARCHITECTURAL INTERIOR ELEVATIONS.
- E. SUBMIT ALL SHOP DRAWINGS OR SUBSTITUTE SPECIFICATIONS TO ARCHITECT FOR APPROVAL AND COORDINATION PRIOR TO CONSTRUCTION.
1. VITRO ARCHITECTUREAL GLASS PPG SOLARBLUE® GLASS CURTAIN WALL GLAZING SYSTEM
2. VITRO ARCHITECTUREAL GLASS PPG SOLARBLUE® GLASS STORE FRONT GLAZING SYSTEM
3. VITRO ARCHITECTUREAL GLASS PPG SOLARBLUE® GLASSOPERABLE GLAZING SYSTEM
4. "ALUCABOND" METAL PANEL SYSTEM (OR EQUAL)
5. EIFS "DRYVIT" SYNTHETIC STUCCO SYSTEM (OR EQUAL)
6. PRE-FINISHED METAL FASCIA/22 GAUGE
7. METAL RAILING SYSTEM
8. GLASS RAILING SYSTEM
9. STEEL TRELLIS DETAIL
10. NATURAL STONE VENEER
11. TILE VENEER (CERAMIC OR PORCELAIN)
12. PRE-FINISHED METAL SIDING (22 GAUGE)



Kevin B. Howard
ARCHITECTS
Incorporated
AIA

GRANDE Vita
a BioCity Enterprise
10243 E. Hampton Ave, Mesa, Arizona, 85209

RESIDENTIAL SENIOR
INDEPENDENT LIVING
EXTERIOR ELEVATIONS

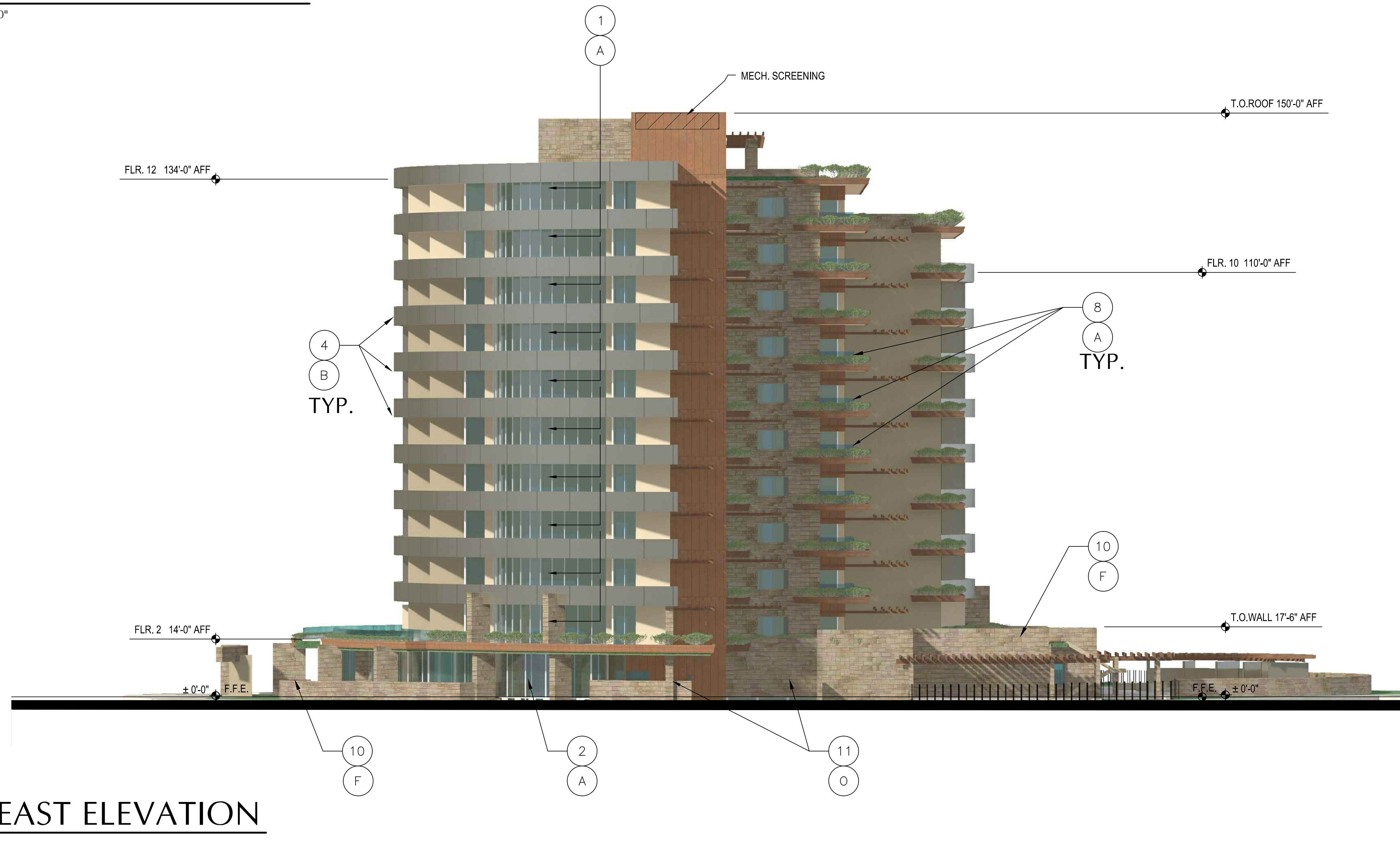
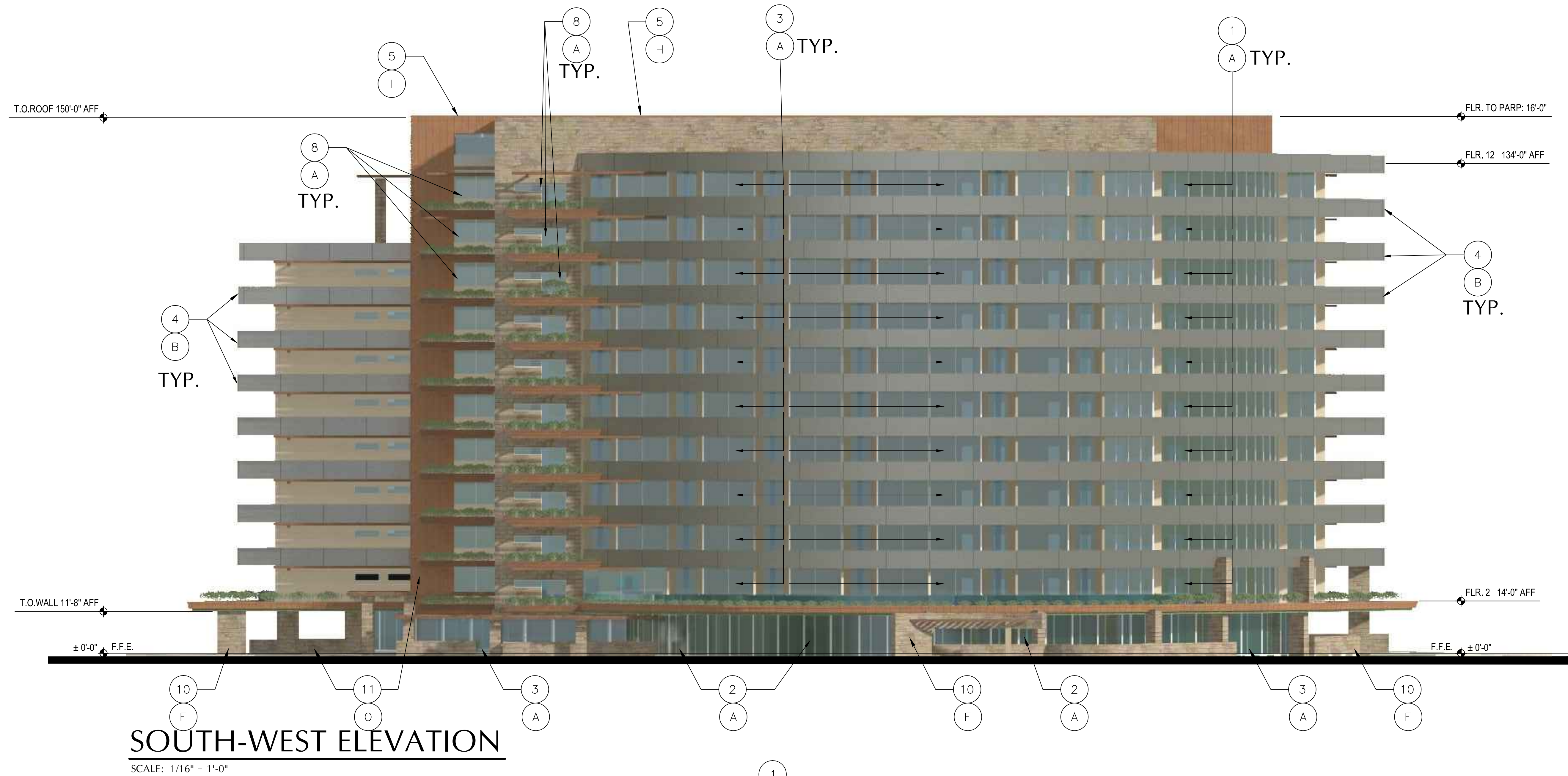
© 2018 Kevin B. Howard Architects, Inc.
All rights reserved.
THESE DRAWINGS ESTABLISH THE GENERAL
STANDARDS OF QUALITY AND DETAIL FOR
DEVELOPING A CONSTRUCTION CONTRACT.
ALL INFORMATION ON THESE DRAWINGS ARE
THE PROPERTY OF KBH ARCHITECTS AND
ARE INTENDED FOR THIS PROJECT ONLY.

Job: 2017-12
Date: 09.24.2018

REVISIONS:

Drawn By:
J. E. Brown
H.S. Walker
Checked By:
J. E. Brown

A4.5



KEYNOTES AND SPECIFICATIONS

- ALL COLORS, SIZES, AND MATERIALS TO BE VERIFIED WITH ARCHITECT PRIOR TO CONSTRUCTION FOR COORDINATION WITH DRAWINGS.
 - SEE ELECTRICAL PLAN FOR COORDINATION WITH POWER REQUIREMENTS FOR ALL ITEMS.
 - INSTALLERS TO FOLLOW ALL STANDARDS AND RECOMMENDATIONS OF MANUFACTURER SPECIFICATIONS.
 - FOR BUILT-IN CABINETRY REFER TO ARCHITECTURAL INTERIOR ELEVATIONS.
 - SUBMIT ALL SHOP DRAWINGS OR SUBSTITUTE SPECIFICATIONS TO ARCHITECT FOR APPROVAL AND COORDINATION PRIOR TO CONSTRUCTION.
- VITRO ARCHITECTUREAL GLASS PPG SOLARBLUE® GLASS CURTAIN WALL GLAZING SYSTEM
 - VITRO ARCHITECTUREAL GLASS PPG SOLARBLUE® GLASS STORE FRONT GLAZING SYSTEM
 - VITRO ARCHITECTUREAL GLASS PPG SOLARBLUE® GLASSOPERABLE GLAZING SYSTEM
 - "ALUCABOND" METAL PANEL SYSTEM (OR EQUAL)
 - EIRS - "DRY VIT" SYNTHETIC STUCCO SYSTEM (OR EQUAL)
 - PRE-FINISHED METAL FASCIA/ZZ GAUGE
 - METAL RAILING SYSTEM
 - GLASS RAILING SYSTEM
 - STEEL TRELLIS DETAIL
 - NATURAL STONE VENEER
 - TILE VENEER (CERAMIC OR PORCELAIN)
 - PRE-FINISHED METAL SIDING (22 GAUGE)

RESIDENTIAL SENIOR INDEPENDENT LIVING EXTERIOR ELEVATIONS

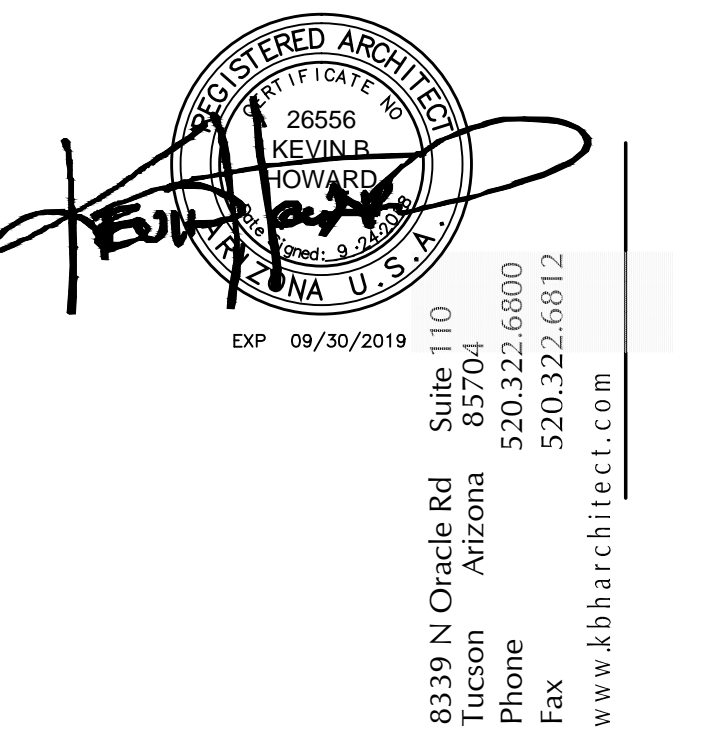
© 2018 Kevin B Howard Architects, Inc.
All rights reserved.
THESE DRAWINGS ESTABLISH THE GENERAL STANDARDS OF QUALITY AND DETAIL FOR DEVELOPING A CONSTRUCTION CONTRACT. ALL INFORMATION ON THESE DRAWINGS ARE THE PROPERTY OF KBH ARCHITECTS AND ARE INTENDED FOR THIS PROJECT ONLY.

Job: 2017-12
Date: 09.24.2018

REVISIONS:

Drawn By:
J. E. Brown
H.S. Walker
Checked By:
J. E. Brown

A4.6

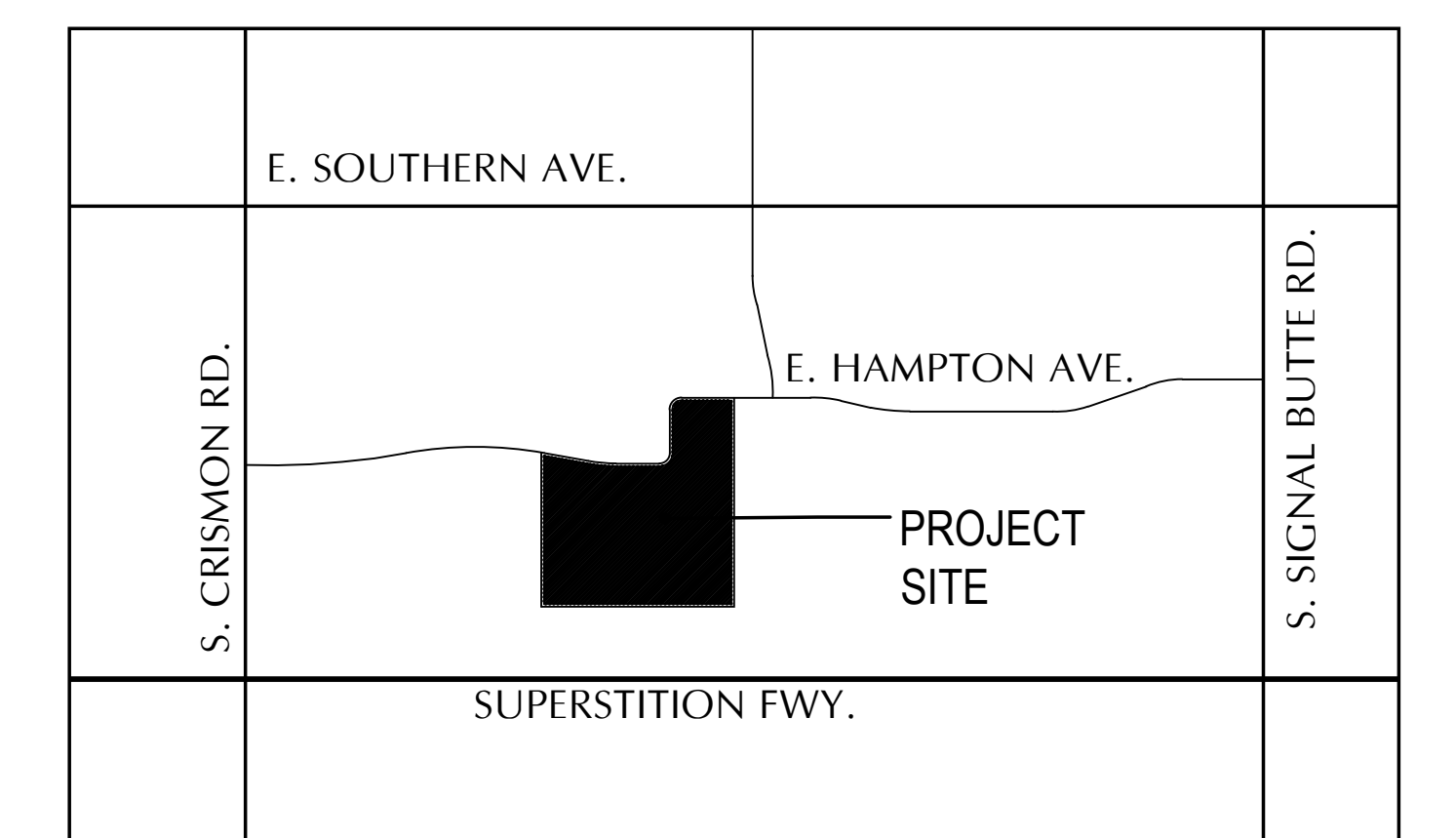


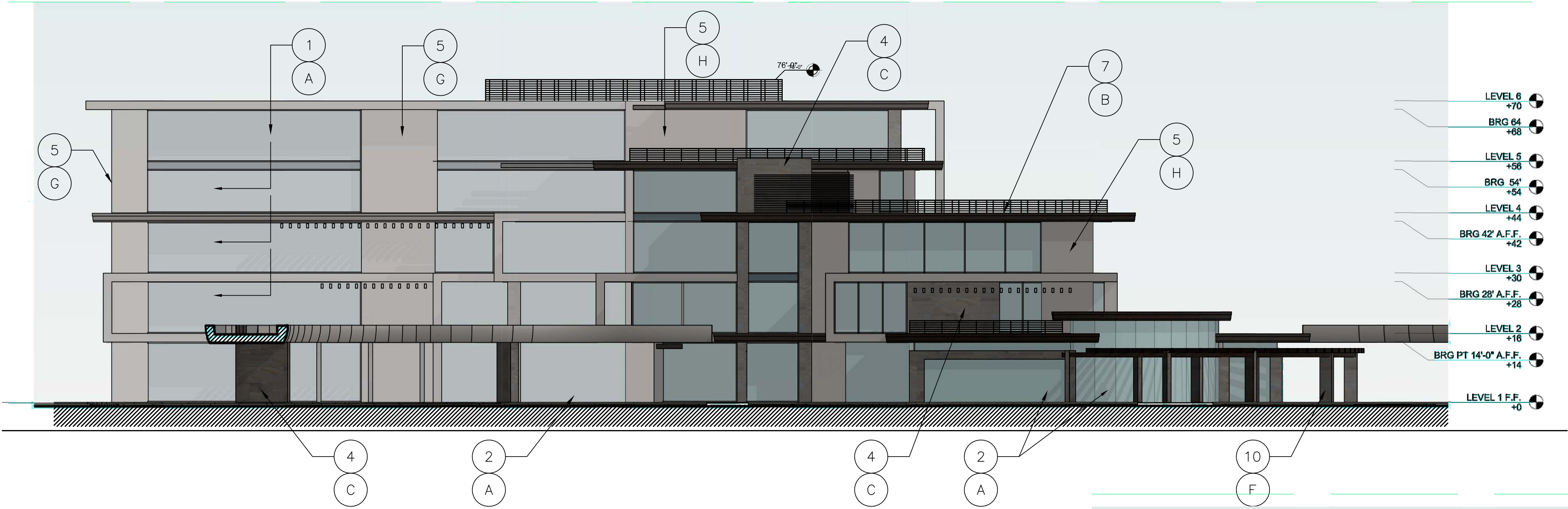
Kevin B Howard
ARCHITECTS
Incorporated
AIA

GRANDE Vita
a BioCity Enterprise
10243 E. Hampton Ave, Mesa, Arizona, 85209



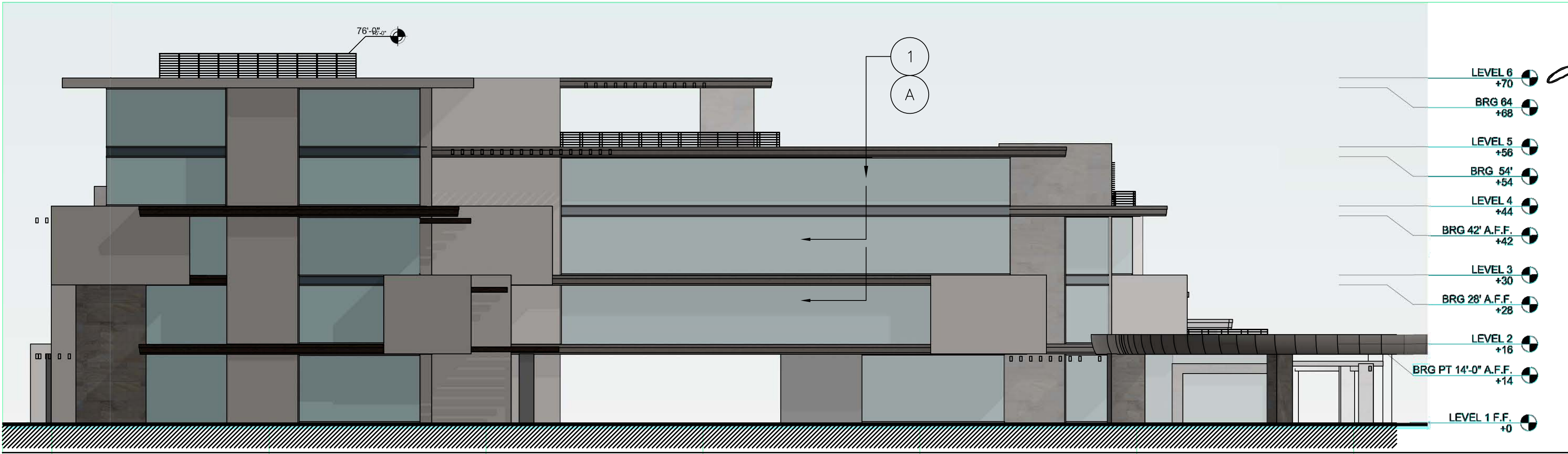
TRANSVERSE BUILDING SECTION
SCALE: 1/8" = 1'-0"





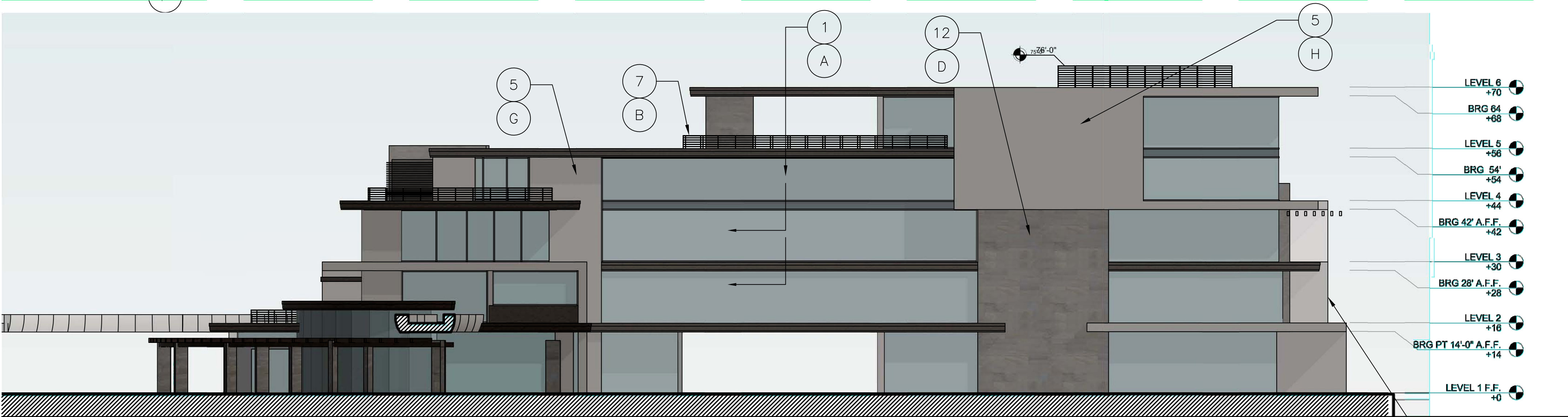
NORTH ELEVATION

SCALE: 1/16" = 1'-0"



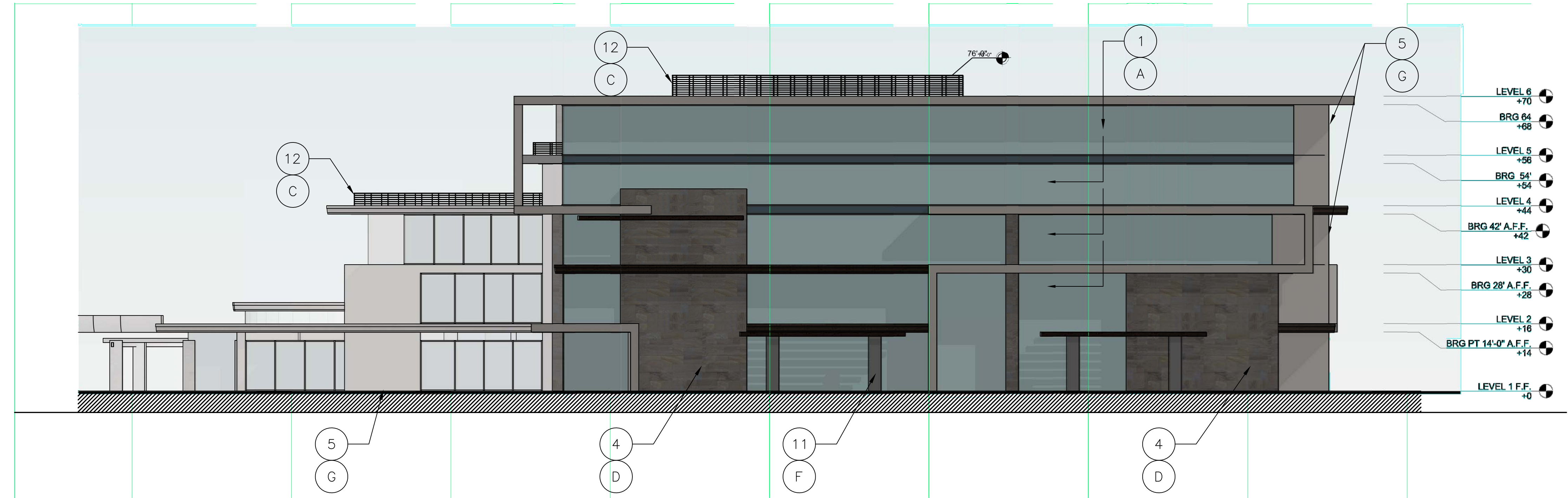
EAST ELEVATION

SCALE: 1/16" = 1'-0"



WEST ELEVATION

SCALE: 1/16" = 1'-0"

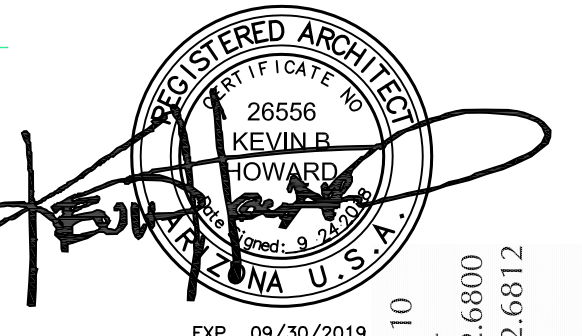


SOUTH ELEVATION

SCALE: 1/16" = 1'-0"

KEYNOTES AND SPECIFICATIONS

- A. ALL COLORS, SIZES, AND MATERIALS TO BE VERIFIED WITH ARCHITECT PRIOR TO CONSTRUCTION FOR COORDINATION WITH DRAWINGS.
B. SEE ELECTRICAL PLAN FOR COORDINATION WITH POWER REQUIREMENTS FOR ALL ITEMS.
C. INSTALLERS TO FOLLOW ALL STANDARDS AND RECOMMENDATIONS OF MANUFACTURER SPECIFICATIONS.
D. FOR BUILT-IN CABINETRY REFER TO ARCHITECTURAL INTERIOR ELEVATIONS.
E. SUBMIT ALL SHOP DRAWINGS OR SUBSTITUTE SPECIFICATIONS TO ARCHITECT FOR APPROVAL AND COORDINATION PRIOR TO CONSTRUCTION.
1. VITRO ARCHITECTUREAL GLASS PPG SOLARBLUE® GLASS CURTAIN WALL GLAZING SYSTEM
2. VITRO ARCHITECTUREAL GLASS PPG SOLARBLUE® GLASS STORE FRONT GLAZING SYSTEM
3. VITRO ARCHITECTUREAL GLASS PPG SOLARBLUE® GLASSOPERABLE GLAZING SYSTEM
4. "ALUCABOND" METAL PANEL SYSTEM (OR EQUAL)
5. EPS - "DRYVIT" SYNTHETIC STUCCO SYSTEM (OR EQUAL)
6. PRE-FINISHED METAL FASCIA/JAZZ GAUGE
7. METAL RAILING SYSTEM
8. GLASS RAILING SYSTEM
9. STEEL TRELLIS DETAIL
10. NATURAL STONE VENEER
11. TILE VENEER (CERAMIC OR PORCELAIN)
12. PRE-FINISHED METAL SIDING (22 GAUGE)



Kevin B. Howard
26556
HOWARD
ARCHITECTS
INCORPORATED
8339 N Oracle Rd
Suite 110
Tucson
Arizona
85704
Phone
520.322.6800
Fax
520.322.6812
www.kbharchitect.com

Kevin B. Howard
ARCHITECTS
Incorporated
AIA

GRANDE Vita
a BioCity Enterprise
10243 E. Hampton Ave, Mesa, Arizona, 85209

Skilled Nursing School/
Rehabilitation
Exterior Elevations

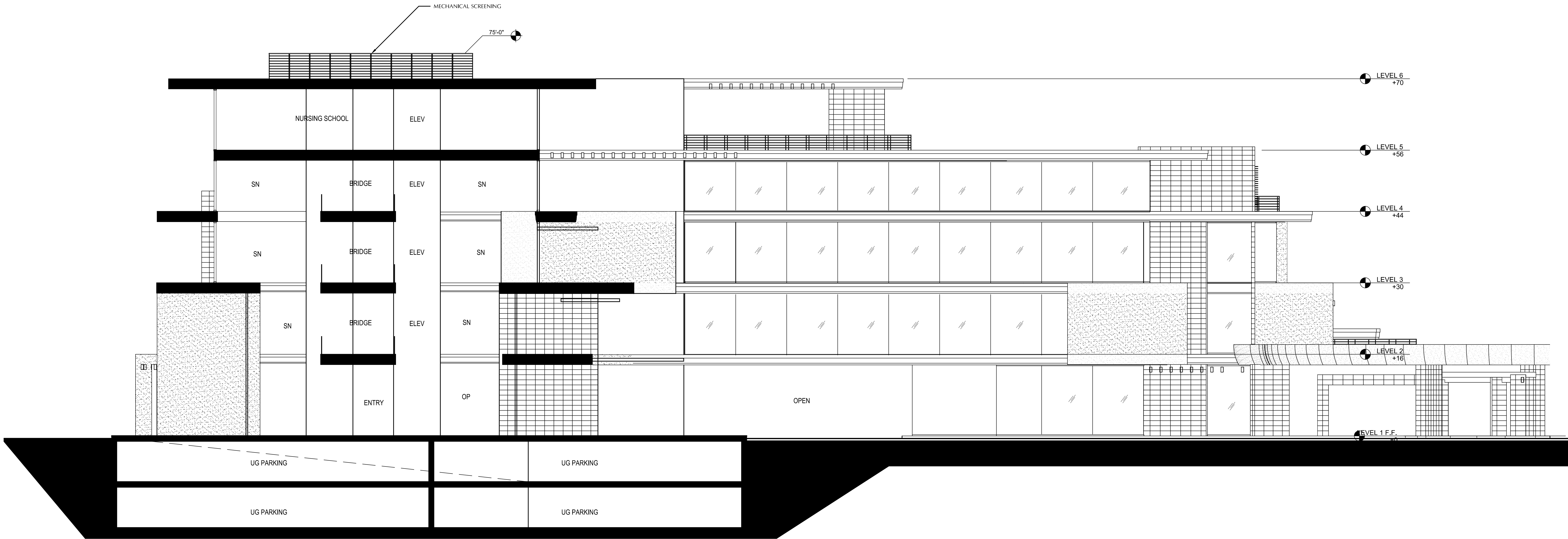
© 2018 Kevin B. Howard Architects, Inc.
All rights reserved.
THESE DRAWINGS ESTABLISH THE GENERAL
STANDARDS OF QUALITY AND DETAIL FOR
DEVELOPING A CONSTRUCTION CONTRACT.
ALL INFORMATION ON THESE DRAWINGS ARE
THE PROPERTY OF KBH ARCHITECTS AND
ARE INTENDED FOR THIS PROJECT ONLY.

Job: 2017-12
Date: 09.24.2018

REVISIONS:

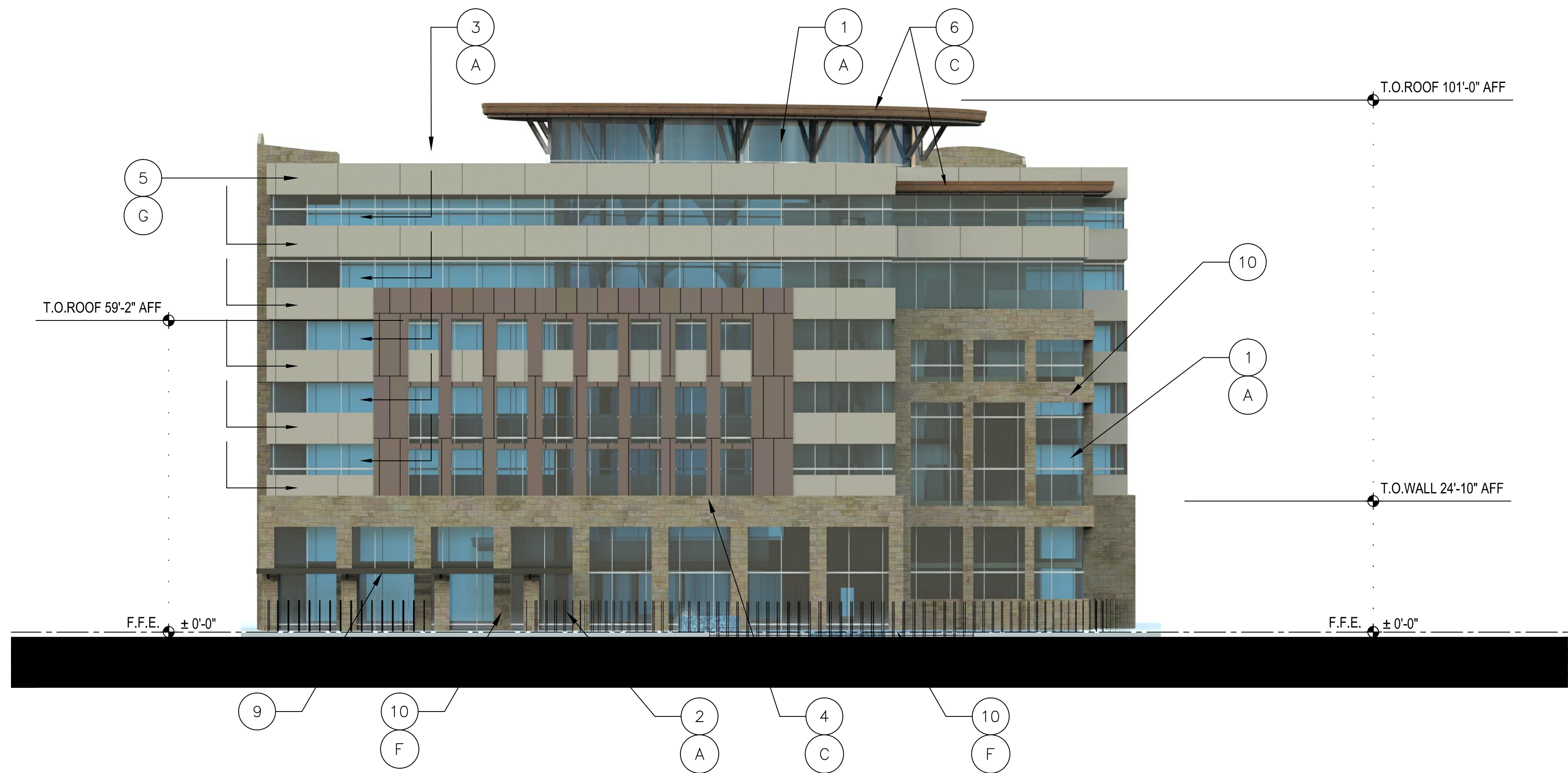
Drawn By:
J. E. Brown
H.S. Walker
Checked By:
J. E. Brown

A5.3



TRANSVERSE BUILDING SECTION

SCALE: 1/8" = 1'-0"



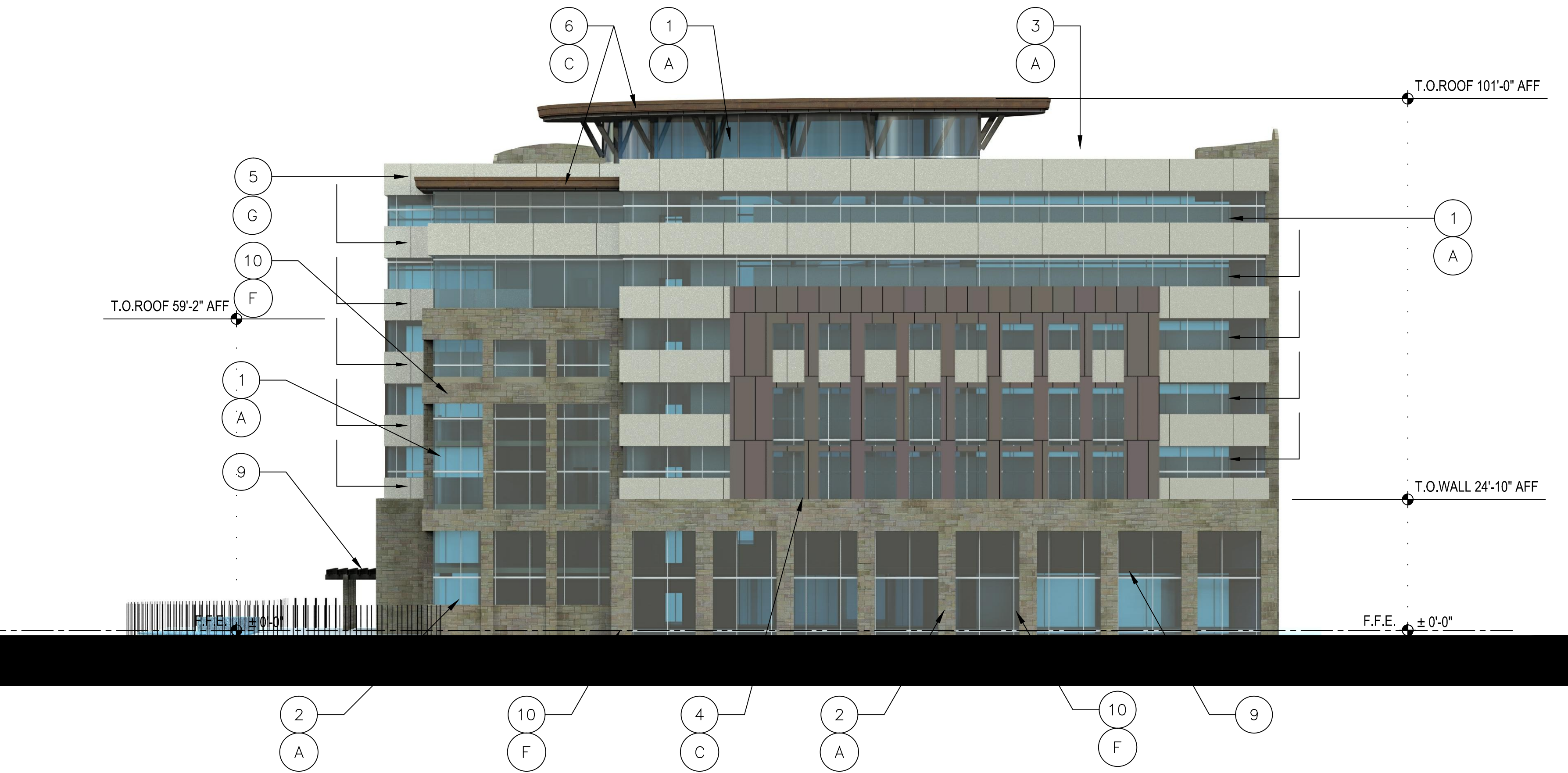
SOUTH ELEVATION

SCALE: 1/16" = 1'-0"



NORTH ELEVATION

SCALE: 1/16" = 1'-0"



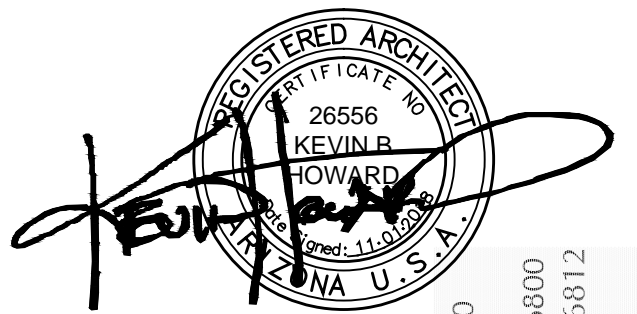
EAST ELEVATION

SCALE: 1/16" = 1'-0"



WEST ELEVATION

SCALE: 1/16" = 1'-0"



Kevin B Howard
ARCHITECTS
AIA
Incorporated

GRANDE VITA
a BioCity Enterprise
10243 E. Hampton Ave., Mesa, Arizona, 85209
A Khanguera Development

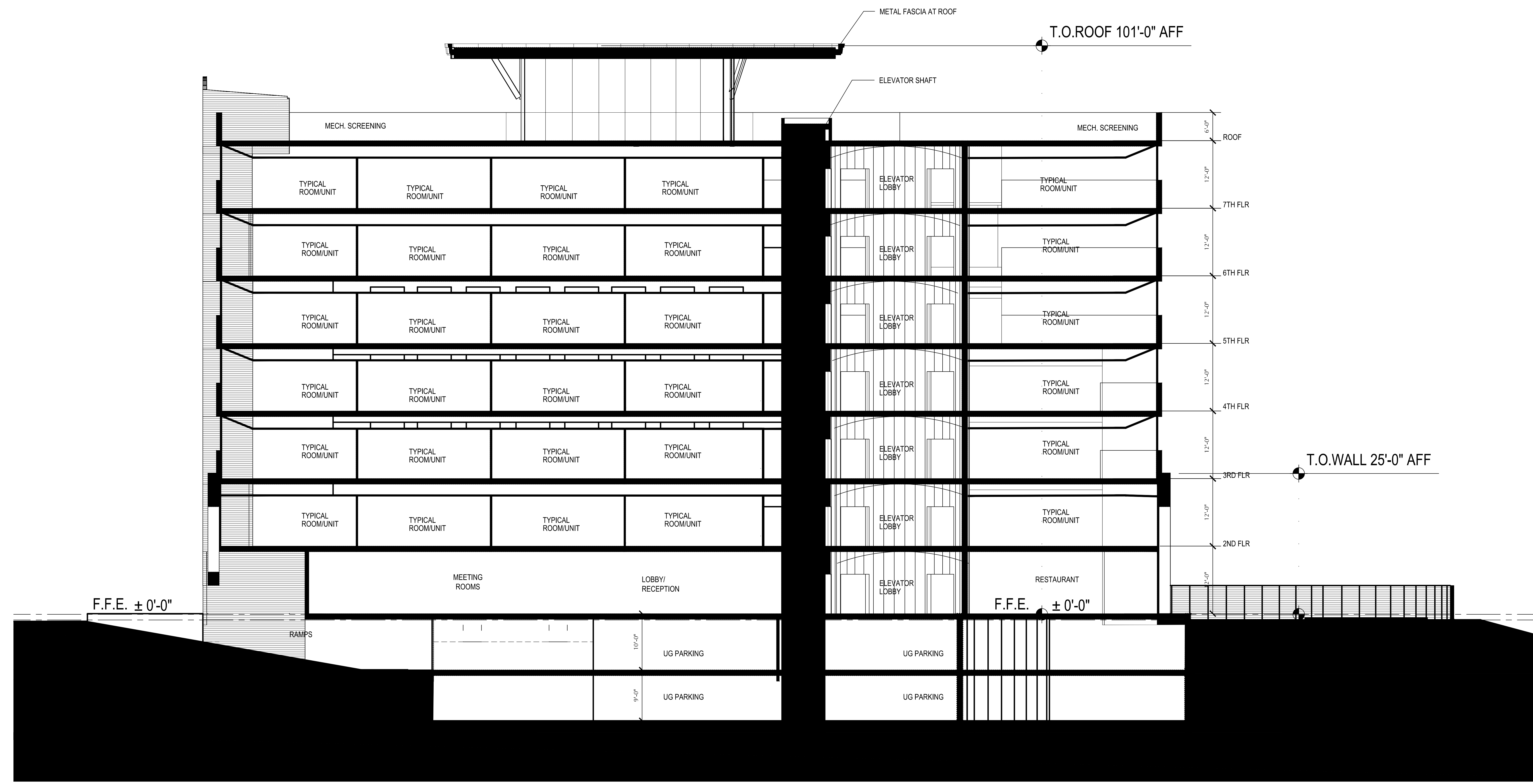
HOTEL #2
ELEVATIONS

© 2018 Kevin B Howard Architects, Inc.
All rights reserved.
THESE DRAWINGS ESTABLISH THE GENERAL
STANDARD OF QUALITY AND DETAIL FOR
DEVELOPING A CONSTRUCTION CONTRACT.
ALL INFORMATION ON THESE DRAWINGS ARE
THE PROPERTY OF KBH ARCHITECTS AND
ARE INTENDED FOR THIS PROJECT ONLY.

Job: 2017-12
Date: 11.01.2018

REVISIONS:

Drawn By:
J. E. Brown
H.S. Walker
Checked By:
J. E. Brown



TRANSVERSE BUILDING SECTION

SCALE: 1/8" = 1'-0"