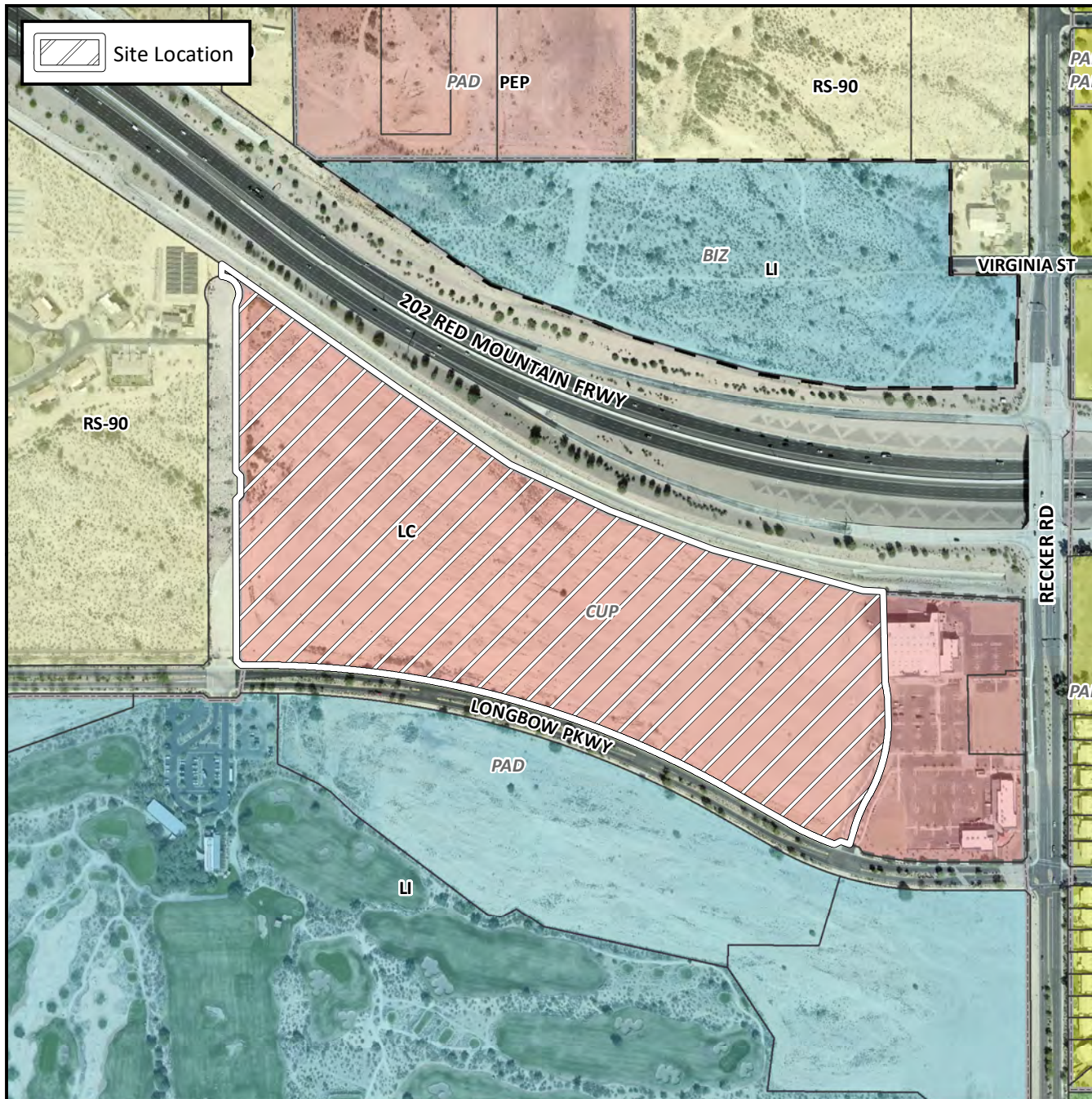


Final Plat Vicinity Map



Case Details

Project:

Longbow Business Park Phase 2

Language:

“Longbow Business Park Phase 2” (District 5) The 5600 through 5900 blocks of East Longbow Parkway (north side). Located south of Loop 202-Red Mountain Freeway and west of Recker Road. 5 LC-PAD-CUP lots. (40± acres). Longbow CAS, LLC, Developer. Jason A. Segneri, Survey Innovation Group, Inc., Surveyor.

