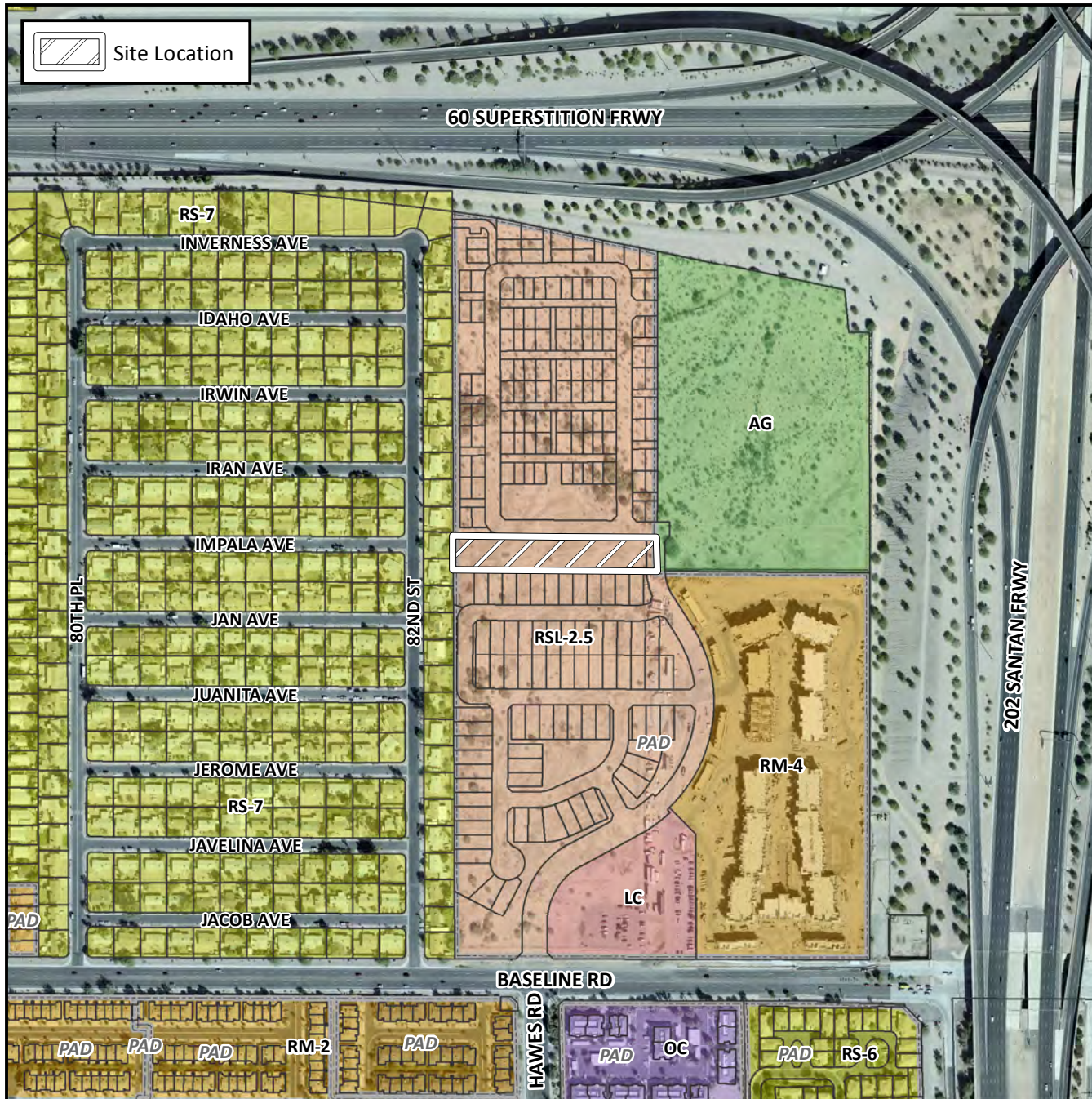


Final Plat Vicinity Map



Case Details

Project:

Heritage Crossing II

Language:

District 6. The 8200 to 8400 blocks of East Baseline Road (north side). Located west of South Channing (Hawes Road) alignment on the north side of Baseline Road. (1.6± acres). Woodside Homes Sales AZ, LLC, Developer. Jesse Boyd, EPS Group, Surveyor.

