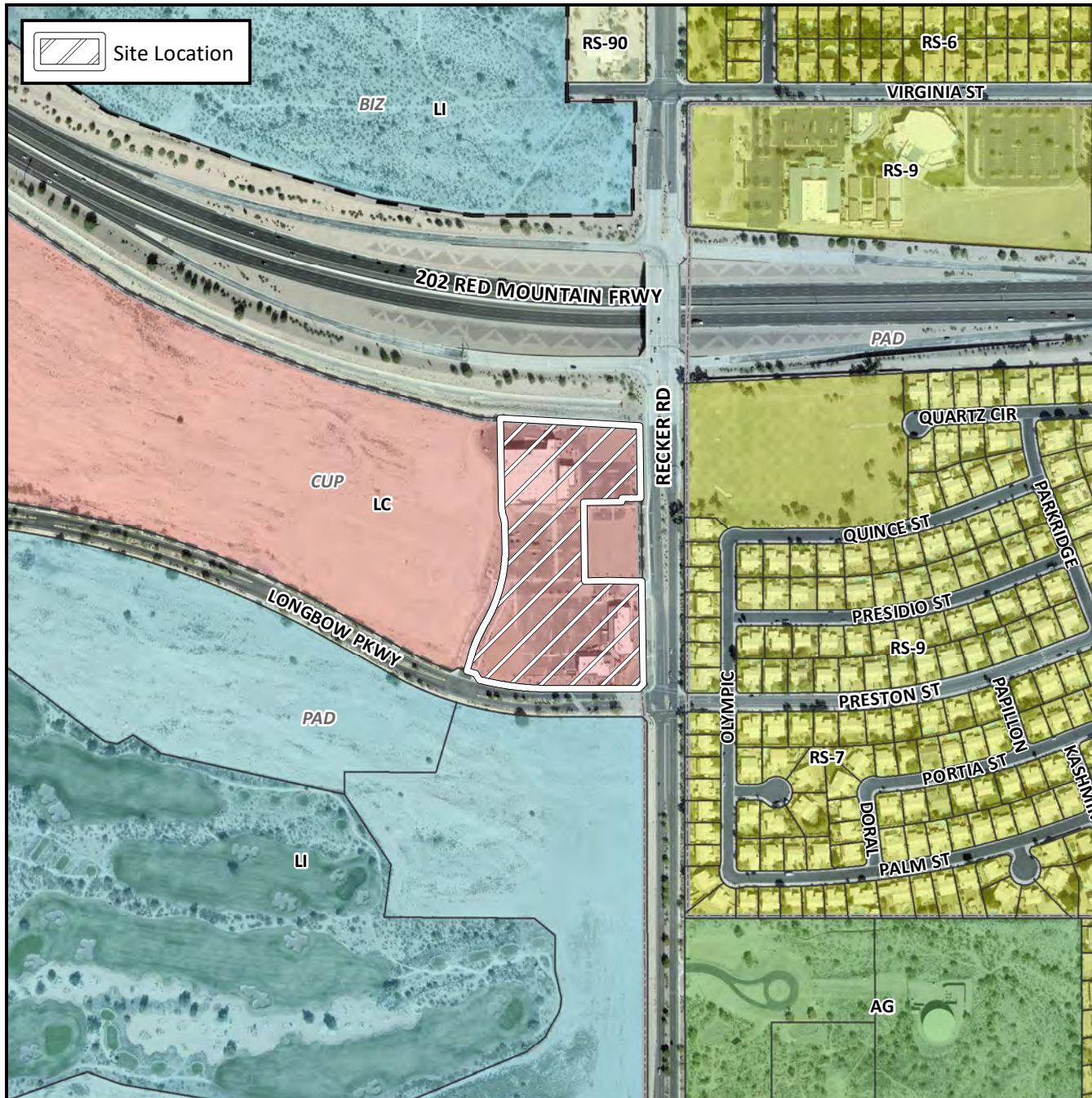


Final Plat Vicinity Map



Case Details

Project:

Longbow Business Park Phase 1

Language:

District 5. The 3100 through 3300 blocks of North Recker Road (west side) and the 5900 block of East Longbow Parkway (north side). Located south of Loop 202-Red Mountain Freeway and west of Recker Road. 4 LC-PAD-CUP lots. (8.02± acres). Longbow CAS, LLC, Developer. Jason A. Segneri, Survey Innovation Group, Inc., Surveyor.

