

EXHIBIT "A"

DRAINAGE EASEMENT ABANDONMENT

LEGAL DESCRIPTION

DRAINAGE EASEMENTS LYING WITHIN LOT 5 OF FALCON COMMERCE PARK, AS RECORDED IN BOOK 889 OF MAPS, PAGE 43, RECORDS OF MARICOPA COUNTY, ARIZONA, BEING A PART OF THE NORTHEAST QUARTER OF SECTION 10, TOWNSHIP 1 NORTH, RANGE 6 EAST, GILA AND SALT RIVER BASE AND MERIDIAN, MARICOPA COUNTY, ARIZONA, MORE PARTICULARLY DESCRIBED AS FOLLOWS:

DRAINAGE EASEMENT AS DEFINED IN DOCUMENT #2007-0004562, MCR.

COMMENCING AT A COM BRASS CAP IN HANDHOLE MARKING THE INTERSECTION OF E. INDIGO STREET AND N. BANNING, THENCE NORTH 89°04'48" WEST, ALONG THE MONUMENT LINE OF SAID INDIGO STREET, A DISTANCE OF 83.97 FEET;

THENCE SOUTH 00°55'12" WEST, A DISTANCE OF 30.00 FEET TO THE POINT OF BEGINNING;

THENCE SOUTH 07°43'56" EAST, A DISTANCE OF 8.09 FEET;

THENCE SOUTH 89°04'21" EAST, A DISTANCE OF 64.72 FEET;

THENCE SOUTH 00°55'29" WEST, A DISTANCE OF 56.00 FEET;

THENCE NORTH 89°04'31" WEST, A DISTANCE OF 88.00 FEET;

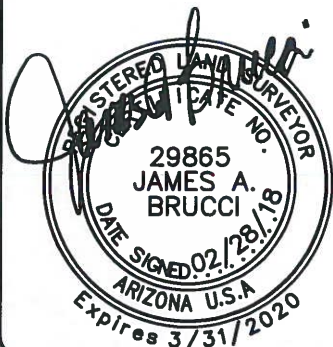
THENCE NORTH 00°55'29" EAST, A DISTANCE OF 56.00 FEET;

THENCE SOUTH 89°04'31" EAST, A DISTANCE OF 13.16 FEET;

THENCE NORTH 07°43'56" WEST, A DISTANCE OF 8.09 FEET;

THENCE SOUTH 89°04'48" EAST, A DISTANCE OF 10.12 FEET TO THE POINT OF BEGINNING.

SAID DESCRIPTION CONTAINING 0.115 ACRE±.



PAGE 1 OF 4

TITLE: **XB02**
DATE: 03/01/18
DESC: DR. ESMNT.
ABANDONMENTS

HUNTER
ENGINEERING

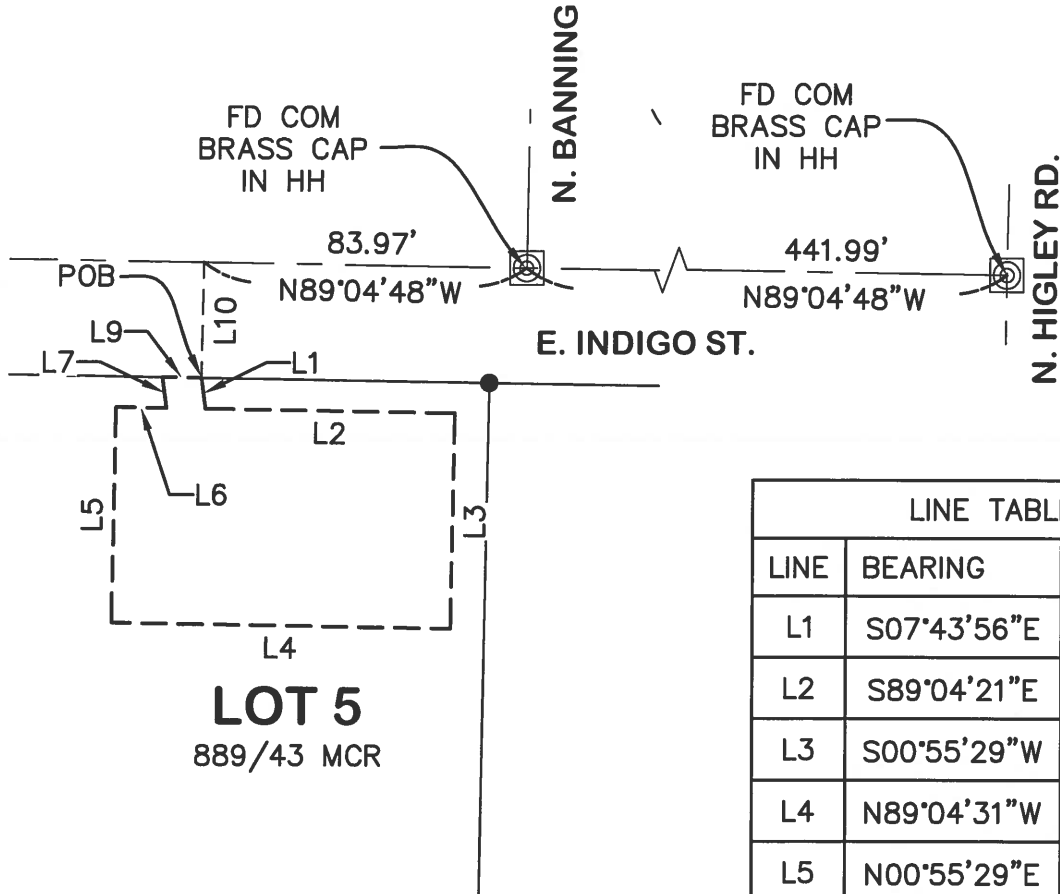
10450 N. 74TH ST., SUITE 200
SCOTTSDALE, AZ 85258
T 480 991 3985
F 480 991 3986

CIVIL AND SURVEY

LGEC239-XB02.DWG
PROJ: LGEC238-S

EXHIBIT "B"

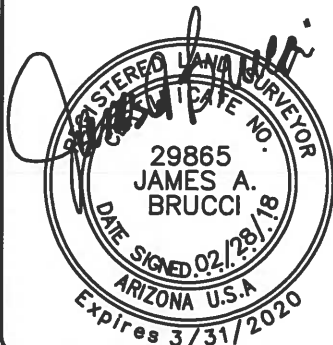
DRAINAGE EASEMENT ABANDONMENT



LINE TABLE		
LINE	BEARING	DISTANCE
L1	S07°43'56"E	8.09'
L2	S89°04'21"E	64.72'
L3	S00°55'29"W	56.00'
L4	N89°04'31"W	88.00'
L5	N00°55'29"E	56.00'
L6	S89°04'31"E	13.16'
L7	N07°43'56"W	8.09'
L9	N89°04'48"W	10.12'
L10	S00°55'12"W	30.00'

POC = POINT OF COMMENCEMENT
POB = POINT OF BEGINNING
COM = CITY OF MESA

PAGE 3 OF 4



TITLE: **XB02**
SCALE: 1"=50'
DATE: 03/01/18
DESC: DR. ESMNT.
ABANDONMENTS

HUNTER
ENGINEERING

10450 N. 74TH ST., SUITE 200
SCOTTSDALE, AZ 85258
T 480 991 3985
F 480 991 3986

CIVIL AND SURVEY

LGEC239-XB02.DWG
PROJ: LGEC238-S