

# EXHIBIT "A"

## DRAINAGE EASEMENT ABANDONMENTS

### LEGAL DESCRIPTION

DRAINAGE EASEMENTS LYING WITHIN LOT 3 OF FALCON COMMERCE PARK, AS RECORDED IN BOOK 889 OF MAPS, PAGE 43, RECORDS OF MARICOPA COUNTY, ARIZONA, BEING A PART OF THE NORTHEAST QUARTER OF SECTION 10, TOWNSHIP 1 NORTH, RANGE 6 EAST, GILA AND SALT RIVER BASE AND MERIDIAN, MARICOPA COUNTY, ARIZONA, MORE PARTICULARLY DESCRIBED AS FOLLOWS:

DRAINAGE EASEMENT #1 AS DEFINED IN DOCUMENT #2007-0004558, MCR;

COMMENCING AT A COM BRASS CAP IN HANDHOLE MARKING THE INTERSECTION OF E. INDIGO STREET AND HIGLEY ROAD, THENCE NORTH 89°04'48" WEST, ALONG THE MONUMENT LINE OF SAID INDIGO STREET, A DISTANCE OF 127.51 FEET;

THENCE NORTH 00°55'12" EAST, A DISTANCE OF 38.06 FEET TO THE POINT OF BEGINNING;

THENCE NORTH 00°55'29" EAST, A DISTANCE OF 139.00 FEET;

THENCE SOUTH 89°04'31" EAST, A DISTANCE OF 57.00 FEET;

THENCE SOUTH 00°55'24" WEST, A DISTANCE OF 120.46 FEET;

THENCE SOUTH 69°28'53" EAST, A DISTANCE OF 5.85 FEET;

THENCE SOUTH 00°55'30" WEST, A DISTANCE OF 4.64 FEET TO A POINT OF CURVATURE, CONCAVE NORTHWESTERLY WHOSE RADIUS IS 20.00 FEET AND WHOSE CHORD BEARS SOUTH 09°15'17" WEST A CHORD DISTANCE OF 5.79 FEET;

THENCE SOUTHWESTERLY ALONG SAID CURVE TO THE RIGHT THROUGH A CENTRAL ANGLE OF 16°39'34" AN ARC LENGTH OF 5.82 FEET;

THENCE NORTH 72°24'56" WEST, A DISTANCE OF 4.88 FEET;

THENCE SOUTH 00°52'53" WEST, A DISTANCE OF 7.61 FEET;

THENCE NORTH 89°04'31" WEST, A DISTANCE OF 57.00 FEET TO THE POINT OF BEGINNING.

SAID DESCRIPTION CONTAINING 0.184 ACRE±.

PAGE 1 OF 4

TITLE: XB01  
DATE: 02/28/18  
DESC: DR. ESMNT.  
ABANDONMENTS

**HUNTER**

ENGINEERING

10450 N. 74TH ST., SUITE 200  
SCOTTSDALE, AZ 85258  
T 480 991 3985  
F 480 991 3986

CIVIL AND SURVEY

LGEC238-XB01.DWG  
PROJ: LGEC238-S



# EXHIBIT "A"

## DRAINAGE EASEMENT ABANDONMENTS

### LEGAL DESCRIPTION

DRAINAGE EASEMENT #2 AS DEFINED IN DOCUMENT #2007-0004559, MCR;

COMMENCING AT A COM BRASS CAP IN HANDHOLE MARKING THE INTERSECTION OF N. BANNING AND E. INDIGO STREET, THENCE SOUTH 89°04'48" EAST, ALONG THE MONUMENT LINE OF SAID INDIGO STREET, A DISTANCE OF 109.93 FEET;

THENCE NORTH 00°55'12" EAST, A DISTANCE OF 41.01 FEET TO THE POINT OF BEGINNING;

THENCE NORTH 89°04'27" WEST, A DISTANCE OF 69.01 FEET;

THENCE NORTH 00°55'29" EAST, A DISTANCE OF 5.43 FEET;

THENCE SOUTH 64°29'16" WEST, A DISTANCE OF 10.27 FEET TO A POINT ON A CURVE, CONCAVE NORTHEASTERLY WHOSE RADIUS IS 20.00 FEET AND WHOSE CHORD BEARS NORTH 11°04'51" WEST A CHORD DISTANCE OF 8.32 FEET;

THENCE NORTHERLY ALONG SAID CURVE TO THE RIGHT THROUGH A CENTRAL ANGLE OF 24°00'20" AN ARC LENGTH OF 8.38 FEET;

THENCE NORTH 00°55'19" EAST, A DISTANCE OF 2.00 FEET;

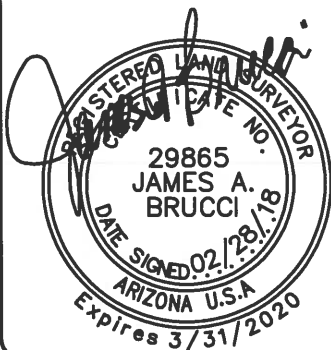
THENCE NORTH 64°29'16" EAST, A DISTANCE OF 12.21 FEET;

THENCE NORTH 00°55'29" EAST, A DISTANCE OF 62.40 FEET;

THENCE SOUTH 89°04'31" EAST, A DISTANCE OF 69.00 FEET;

THENCE SOUTH 00°55'33" WEST, A DISTANCE OF 78.83 FEET TO THE POINT OF BEGINNING.

SAID DESCRIPTION CONTAINING 0.128 ACRE±.



PAGE 2 OF 4

TITLE: XB01  
DATE: 02/28/18  
DESC: DR. ESMNT.  
ABANDONMENTS

**HUNTER**  
ENGINEERING

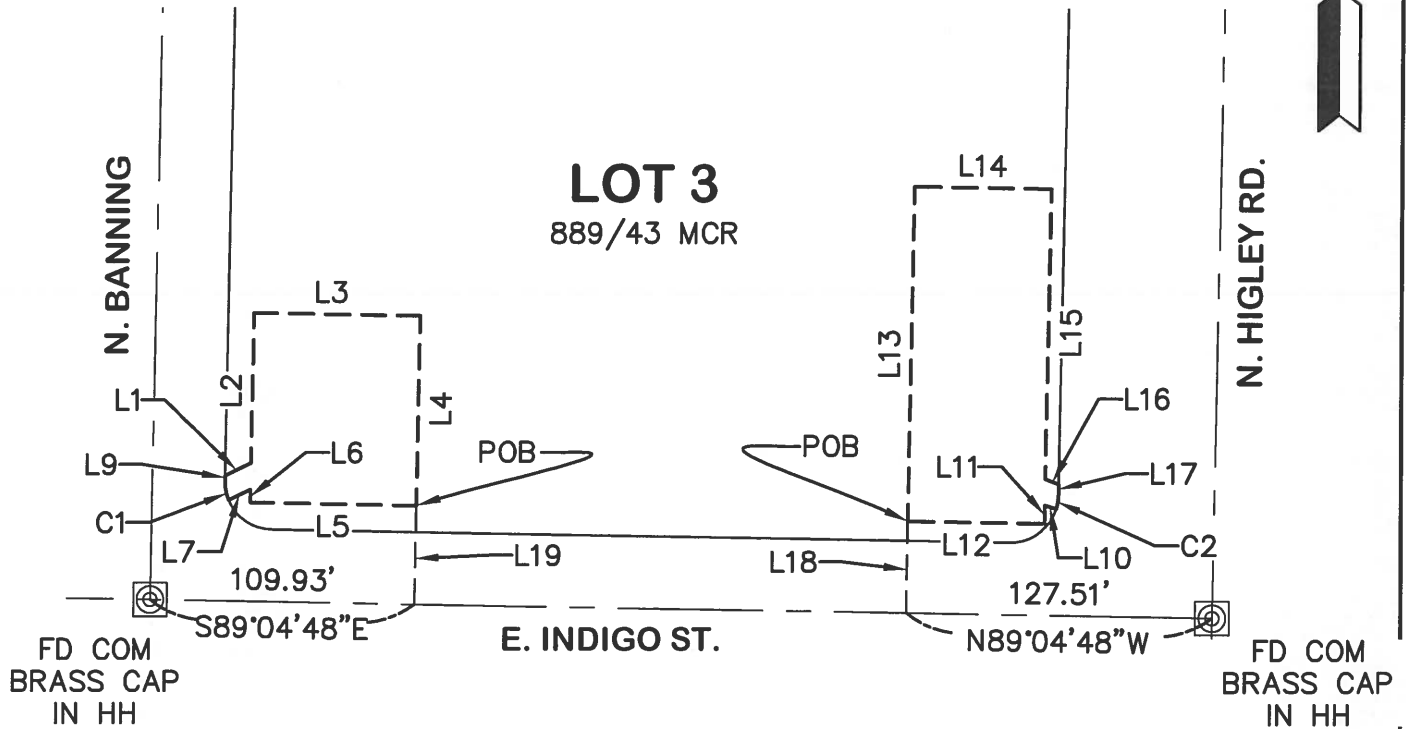
10450 N. 74TH ST., SUITE 200  
SCOTTSDALE, AZ 85258  
T 480 991 3985  
F 480 991 3986

CIVIL AND SURVEY

LGEC238-XB01.DWG  
PROJ: LGEC238-S

# EXHIBIT "B"

## DRAINAGE EASEMENT ABANDONMENTS



POC = POINT OF COMMENCEMENT  
POB = POINT OF BEGINNING

PAGE 3 OF 4

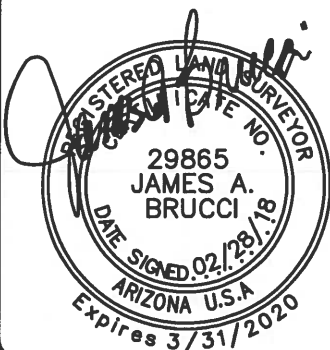
TITLE: **XB01**  
SCALE: 1"=80'  
DATE: 02/28/18  
DESC: DR. ESMNT.  
ABANDONMENTS

**HUNTER**  
ENGINEERING

10450 N. 74TH ST., SUITE 200  
SCOTTSDALE, AZ 85258  
T 480 991 3985  
F 480 991 3986

CIVIL AND SURVEY

LGEC238—XB01.DWG  
PROJ: LGEC238—S



# EXHIBIT "B"

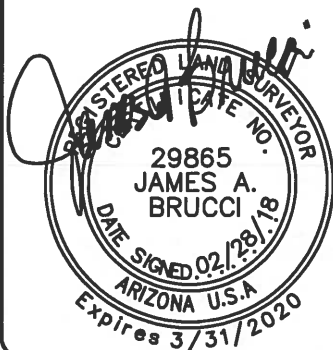
## DRAINAGE EASEMENT ABANDONMENTS

CURVE TABLE					
CURVE	DELTA	RADIUS	LENGTH	CHORD DIRECTION	CHORD LENGTH
C1	$\Delta = 24^{\circ}00'20''$	20.00'	8.38'	S11°04'51"E	8.32'
C2	$\Delta = 16^{\circ}39'34''$	20.00'	5.82'	N09°15'17"E	5.79'

LINE TABLE		
LINE	BEARING	DISTANCE
L1	N64°29'16"E	12.21'
L2	N00°55'29"E	62.40'
L3	S89°04'31"E	69.00'
L4	S00°55'33"W	78.83'
L5	N89°04'27"W	69.01'
L6	N00°55'29"E	5.43'
L7	S64°29'16"W	10.27'
L8	S00°55'19"W	2.00'
L9	S00°55'19"W	2.00'
L10	S72°24'56"E	4.88'

L11	N00°52'53"E	7.61'
L12	N89°04'31"W	57.00'
L13	N00°55'29"E	139.00'
L14	S89°04'31"E	57.00'
L15	S00°55'24"W	120.46'
L16	S69°28'53"E	5.85'
L17	S00°55'30"W	4.64'
L18	S00°55'12"W	38.06'
L19	S00°55'12"W	41.01'

**PAGE 4 OF 4**



**TITLE:** XB01  
**SCALE:** 1"=80'  
**DATE:** 02/28/18  
**DESC:** DR. ESMNT.  
 ABANDONMENTS

**HUNTER**  
 ENGINEERING

10450 N. 74TH ST., SUITE 200  
 SCOTTSDALE, AZ 85258  
 T 480 991 3985  
 F 480 991 3986

CIVIL AND SURVEY

LGEC238-XB01.DWG  
 PROJ: LGEC238-S