

EXHIBIT "A"
LEGAL DESCRIPTION
PARTIAL RELEASE OF P.U.F.E.
1255 EAST SOUTHERN AVENUE
MESA, ARIZONA

June 6, 2018
Job No. 2013-038
Page 1 of 1

A PORTION OF THAT EXISTING 20 FOOT WIDE PUBLIC UTILITIES AND FACILITIES EASEMENT AS RECORDED IN DOCUMENT NUMBER 88-257802, AND RE-RECORDED IN DOCUMENT NUMBER 88-531207, RECORDS OF MARICOPA COUNTY ARIZONA, SITUATED WITHIN THE NORTHWEST QUARTER OF SECTION 36, TOWNSHIP 1 NORTH, RANGE 5 EAST OF THE GILA AND SALT RIVER BASE AND MERIDIAN, MORE PARTICULARLY DESCRIBED AS FOLLOWS:

A 20 FOOT WIDE STRIP OF LAND, 10 FEET ON EACH SIDE OF THE FOLLOWING DESCRIBED LINES:

COMMENCING AT THE CENTERLINE POINT "B" AS DESCRIBED WITHIN THE ABOVE RECORDED DOCUMENTS;

THENCE NORTH 28 DEGREES 40 MINUTES 44 SECONDS EAST, A DISTANCE OF 50.91 FEET TO THE EASTERLY LINE OF SAID 20 FOOT WIDE PUBLIC UTILITY EASEMENT AND THE CENTERLINE **POINT OF BEGINNING**;

THENCE CONTINUING NORTH 28 DEGREES 40 MINUTES 44 SECONDS EAST, A DISTANCE OF 80.49 FEET;

THENCE NORTH 1 DEGREE 19 MINUTES 16 SECONDS WEST, A DISTANCE OF 36.84 FEET TO THE SOUTHERLY LINE OF THAT 20 FOOT WIDE PUBLIC UTILITY EASEMENT AS RECORDED IN DOCUMENT NUMBER 92-598730 AND THE **END** OF THE RELEASE OF WATER LINE EASEMENT.

SAID 10 FOOT WIDE SIDES TO EXTEND OR SHORTEN TO ALIGN WITH THE EXISTING PUBLIC UTILITY EASEMENT.

TOGETHER WITH:

COMMENCING AT THE CENTERLINE POINT "B" AS DESCRIBED WITHIN THE ABOVE RECORDED DOCUMENTS;

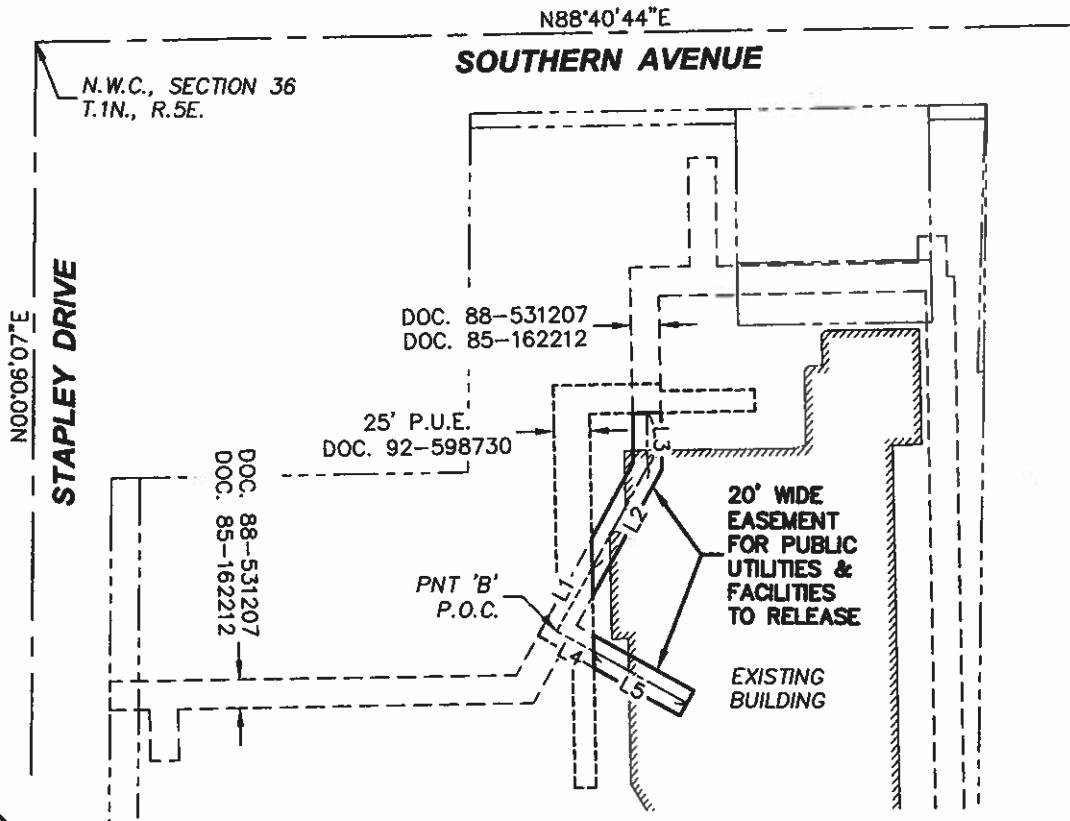
THENCE SOUTH 61 DEGREES 19 MINUTES 16 SECONDS EAST, A DISTANCE OF 29.39 FEET TO THE EASTERLY LINE OF SAID 20 FOOT WIDE PUBLIC UTILITY EASEMENT AND THE CENTERLINE **POINT OF BEGINNING**;

THENCE CONTINUING SOUTH 61 DEGREES 19 MINUTES 16 SECONDS EAST, A DISTANCE OF 74.61 FEET TO THE **END** OF SAID EXISTING 20 FOOT WIDE WATERLINE EASEMENT.

SAID 10 FOOT WIDE SIDES TO EXTEND OR SHORTEN TO ALIGN WITH THE EXISTING PUBLIC UTILITY EASEMENT.



LINE TABLE		
LINE	BEARING	LENGTH
L1	N28°40'44"E	50.91
L2	N28°40'44"E	80.49
L3	N01°19'16"W	36.84
L4	S61°19'16"E	29.39
L5	S61°19'16"E	74.61



SIG
SURVEY INNOVATION
GROUP, INC

PARTIAL RELEASE P.U.F.E.
1255 E. SOUTHERN AVENUE
MESA, ARIZONA

Ph (480) 922 0780 **Land Surveying Services** Fx (480) 922 0781
 7301 EAST EVANS ROAD, SCOTTSDALE, AZ 85260

JOB#2013-038	DWG: 13-038	RELEASE	DATE: 6/12/18
SCALE: N.T.S.	DRAWN: ELS	CHECK: RMH	SHEET: 1 OF 1