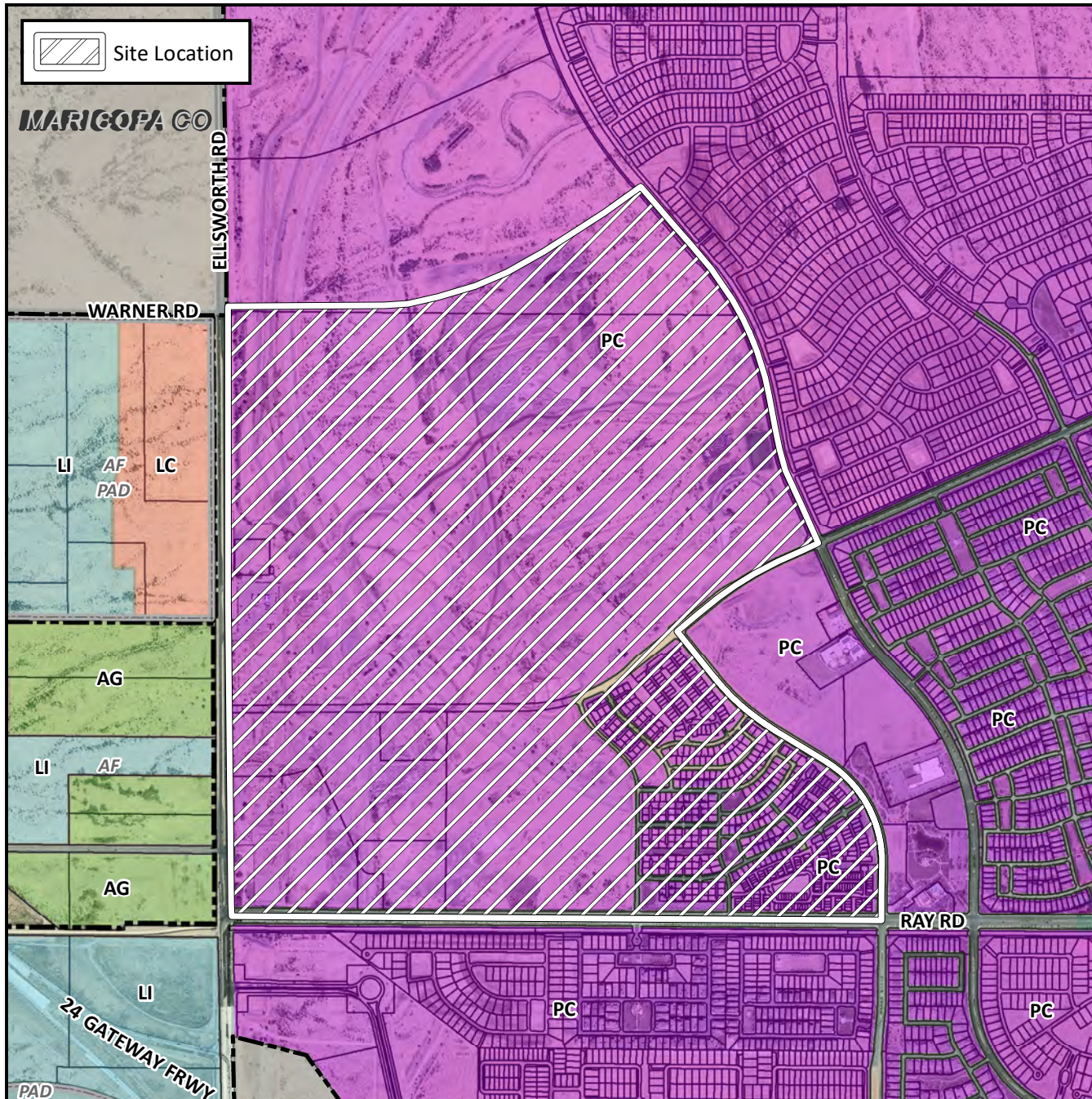


Planning and Zoning Vicinity Map: ZON18-00286



Case Details

CASE:

ZON18-00286

PRE-PLAT : ☐

SITE / ADDRESS:

District 6. The area generally bounded by Warner Road alignment on the north, Ellsworth Road on the west, Ray Road on the south, and Eastmark Parkway on the east. (620± acres).

REQUEST:

Requesting approval of a modification to Development Unit Plan 3/4 (DUP 3/4) by removing a portion (428± acres) and creating Development Unit Plan 3/4 North (DUP 3/4 N) for the Eastmark Community Plan.

