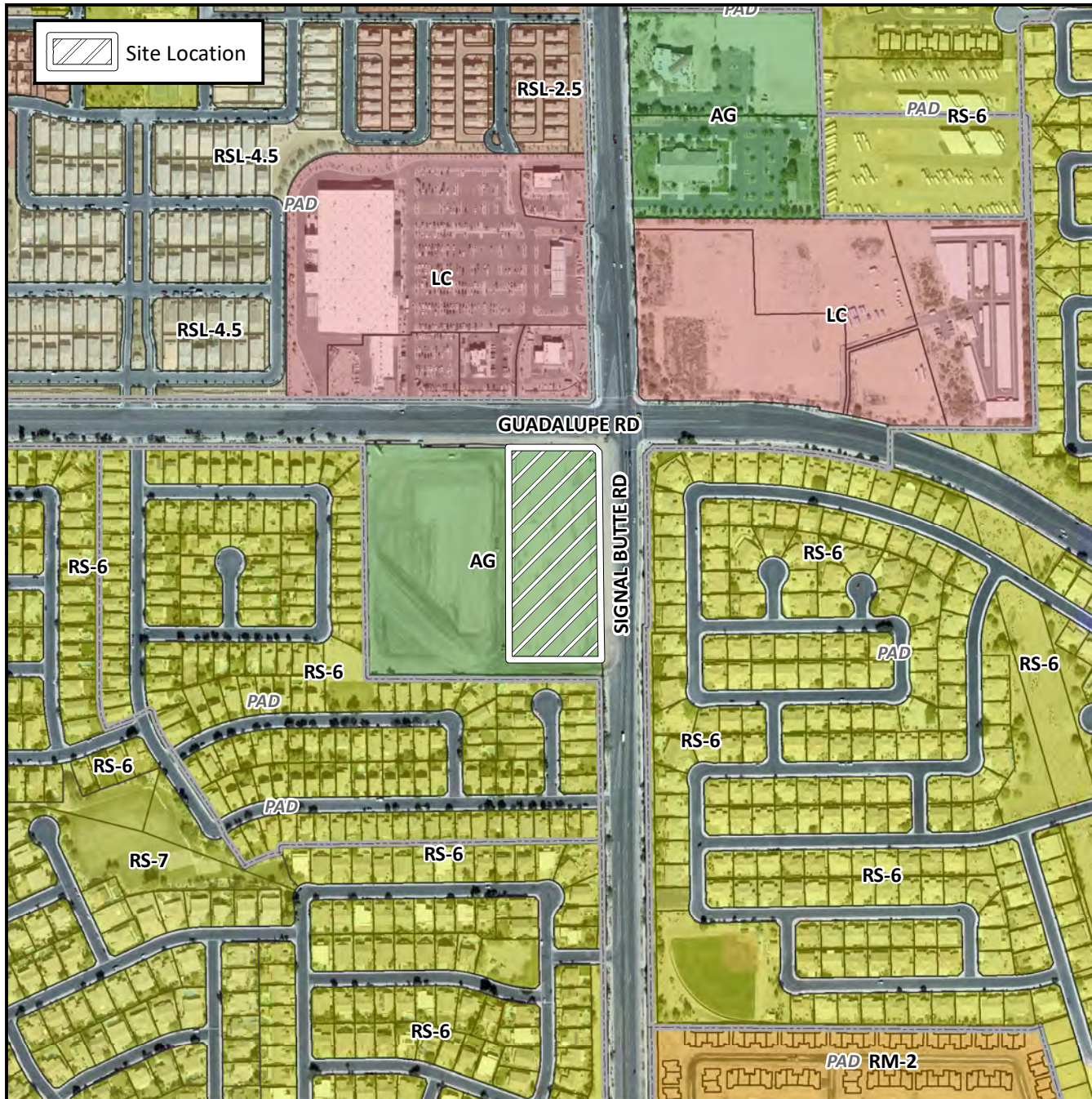


# Planning and Zoning Vicinity Map: ZON17-00384



## Case Details

**CASE:**

ZON17-00384

**PRE-PLAT :** ☐

### SITE / ADDRESS:

District 6. The 2800 to 2900 block of South Signal Butte Road (west side) and the 10600 to 10800 block of East Guadalupe Road (south side). Located on the south side of Guadalupe Road and the west side of Signal Butte Road. (4.5± acres)

### REQUEST:

Rezone from AG to LC; and Site Plan Review. This request will allow for the development of a group commercial center.

