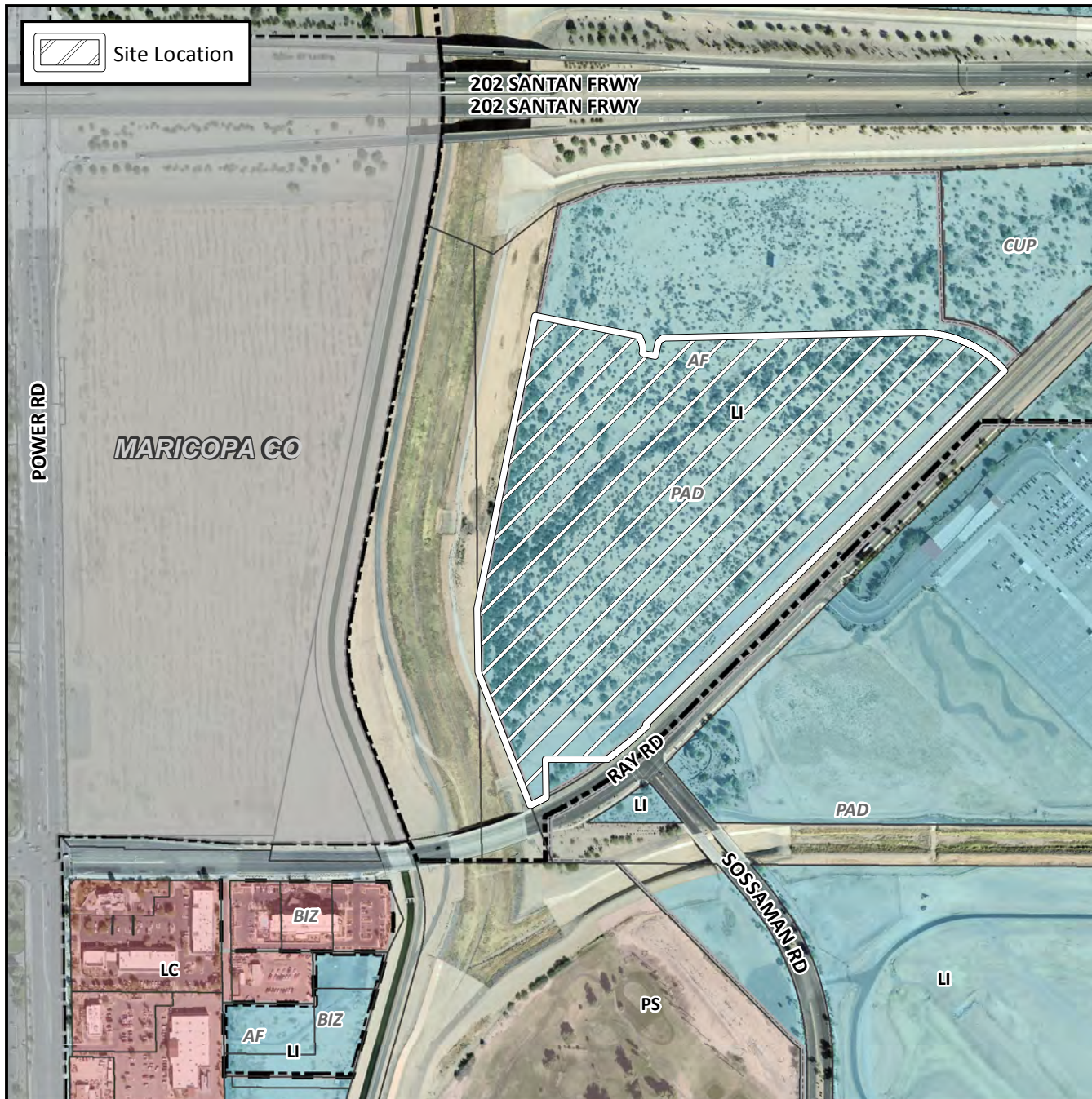


## Final Plat Vicinity Map



## Case Details

### Project:

Parcel A Final Plat B for Ray Road Commerce Center North

### Language:

(District 6) The 7100 to 7300 blocks of East Ray Road (north side) Located east of Power Road on the north side of Ray Road. (32.4± acres) Phx-Mesa Gateway Airport 193, LLC, Developer; Richard E. Jones, XCL Engineering, LLC, Surveyor.

