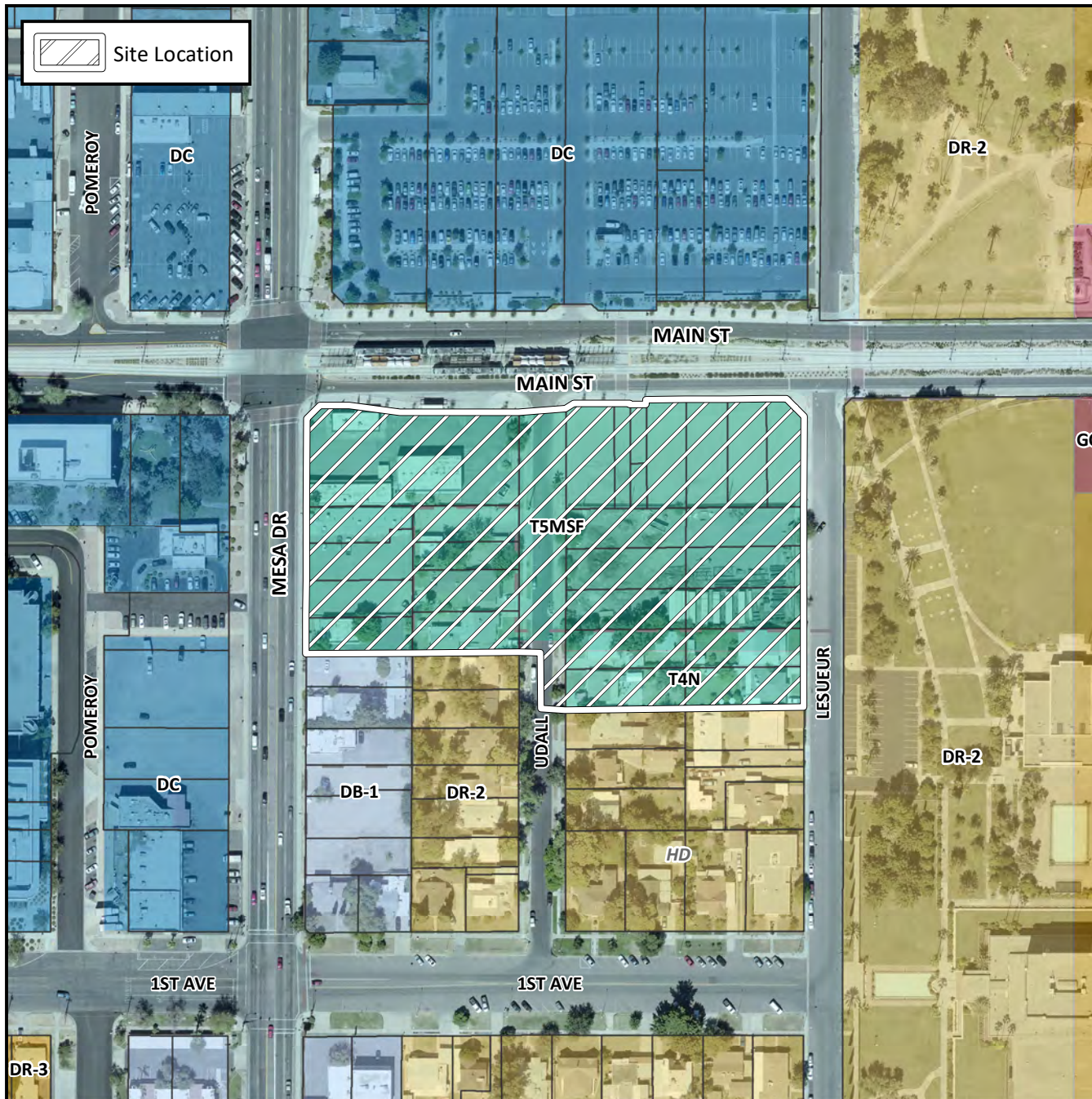


Final Plat Vicinity Map



Case Details

Project:

Mesa Temple District

Language:

(District 4). The The 0 block of South Mesa Drive (east side), the 400 block of East Main Street (south side), the 0 block of South Udall (both sides) and the 0 block of South LeSueur (west side). Located at the southeast corner of Main Street and Mesa Drive. 1 lot T5MSF, 1 lot T5MSF and T5MSF-HD, and 1 T4N-HD lot. (6 ± acres). Corporation of the Presiding Bishop of the Church of Jesus Christ of Latter-Day Saints, Developer; Robert A. Johnston, Higart Wilson, Surveyor

