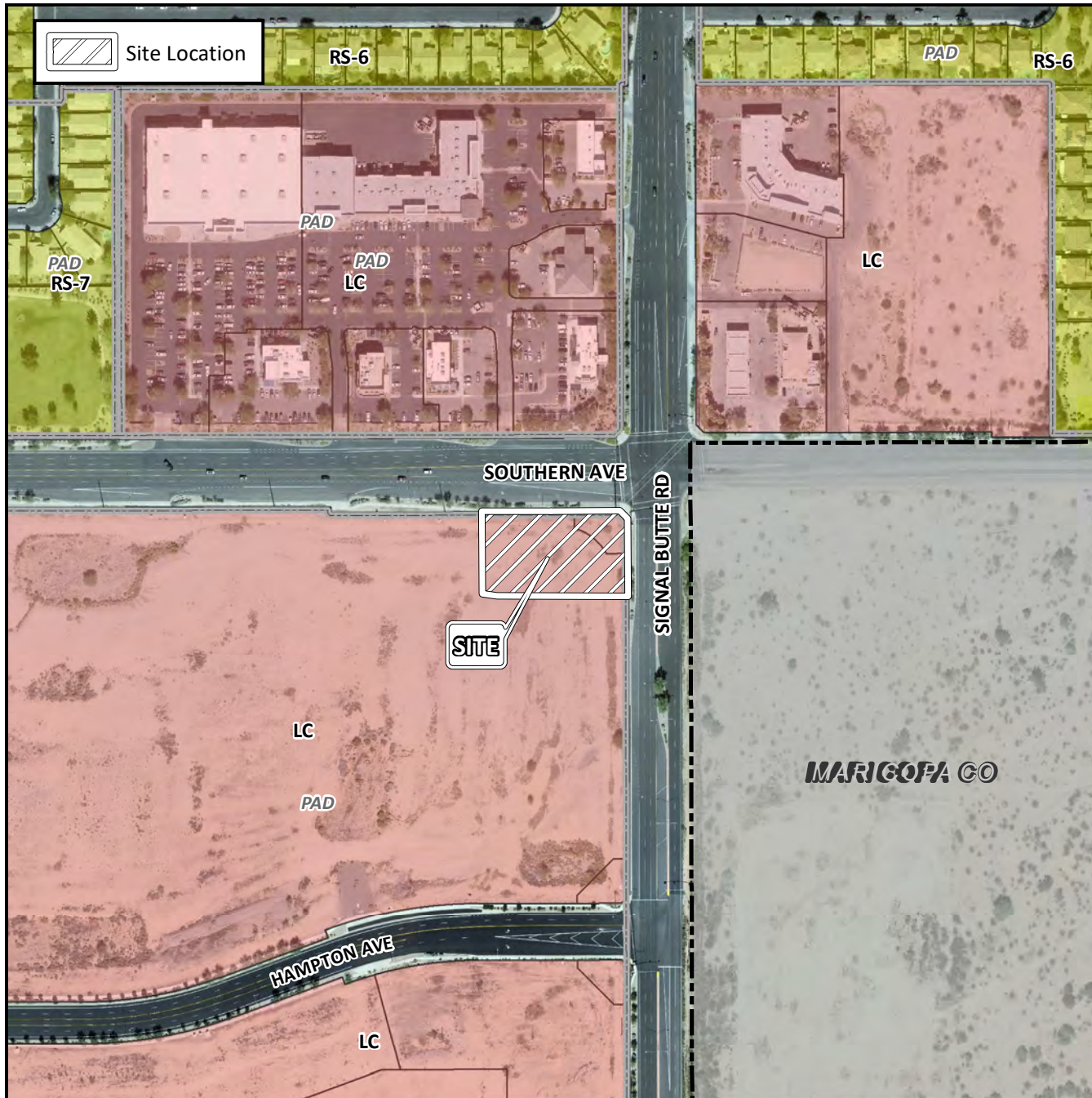


Planning and Zoning Vicinity Map: ZON18-00442



Case Details

CASE:

ZON18-00442

PRE-PLAT : ☐

SITE / ADDRESS:

District 6. The 10700 block of East Southern Avenue (south side) and the 1200 block of South Signal Butte Road (west side). Located on the southwest corner of Southern Avenue and Signal Butte Road. (1.0± acres).

REQUEST:

Site Plan Review. This request will allow for the development of a medical office.

