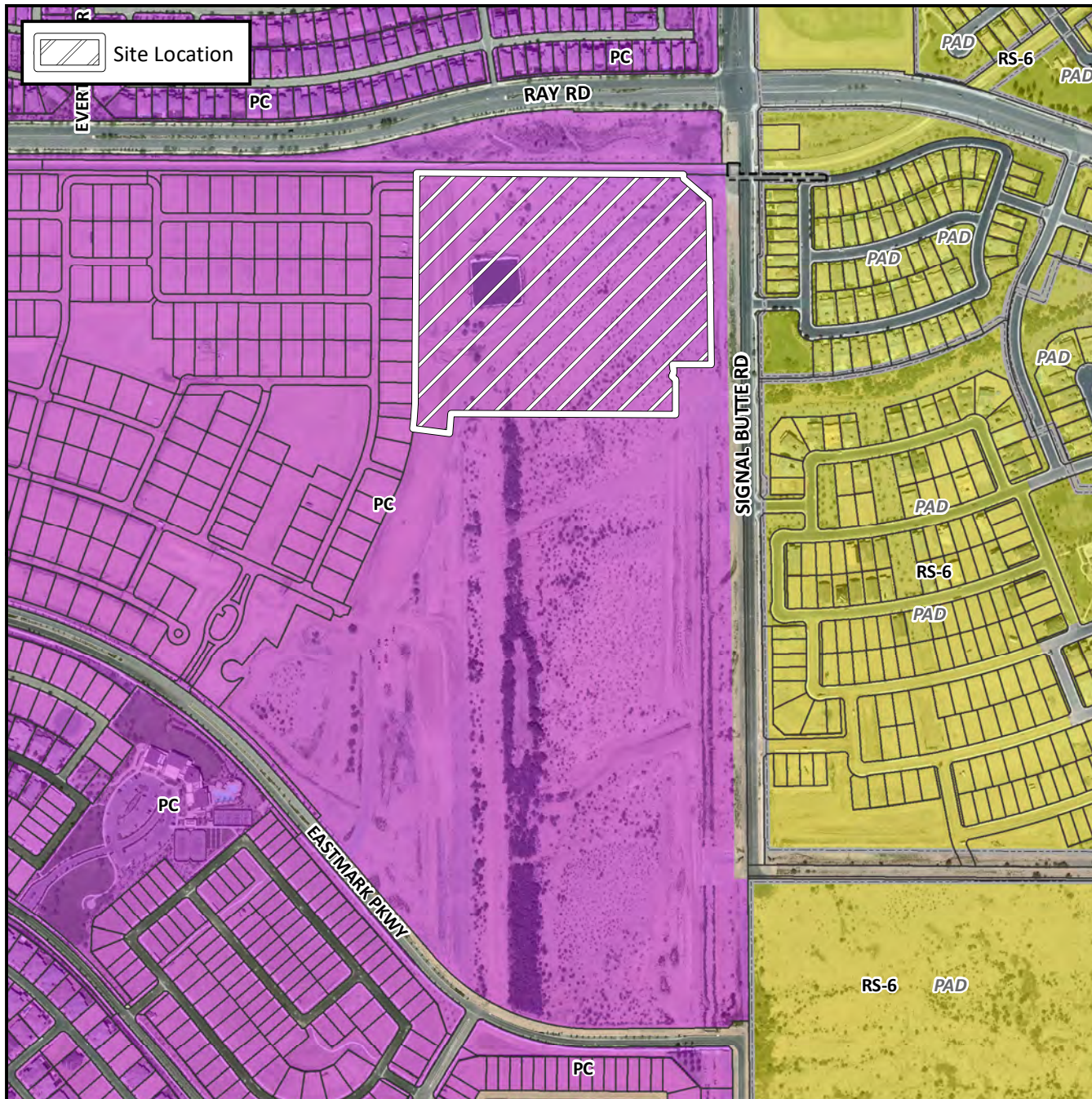


Final Plat Vicinity Map



Case Details

Project:

The Estates at Eastmark, Parcel 8-6

Language:

(District 6) The 10000 to 10800 blocks of East Ray Road (south side) and the 5200 to 5300 blocks of South Signal Butte Road (west side). Located on the southwest corner of Signal Butte and Ray Roads. 91 PCD single residence lots. (23.3 ± acres). Jen Arizona 4, LLC, Developer; Raymond S. Munoz III, EPS Group, Surveyor.

