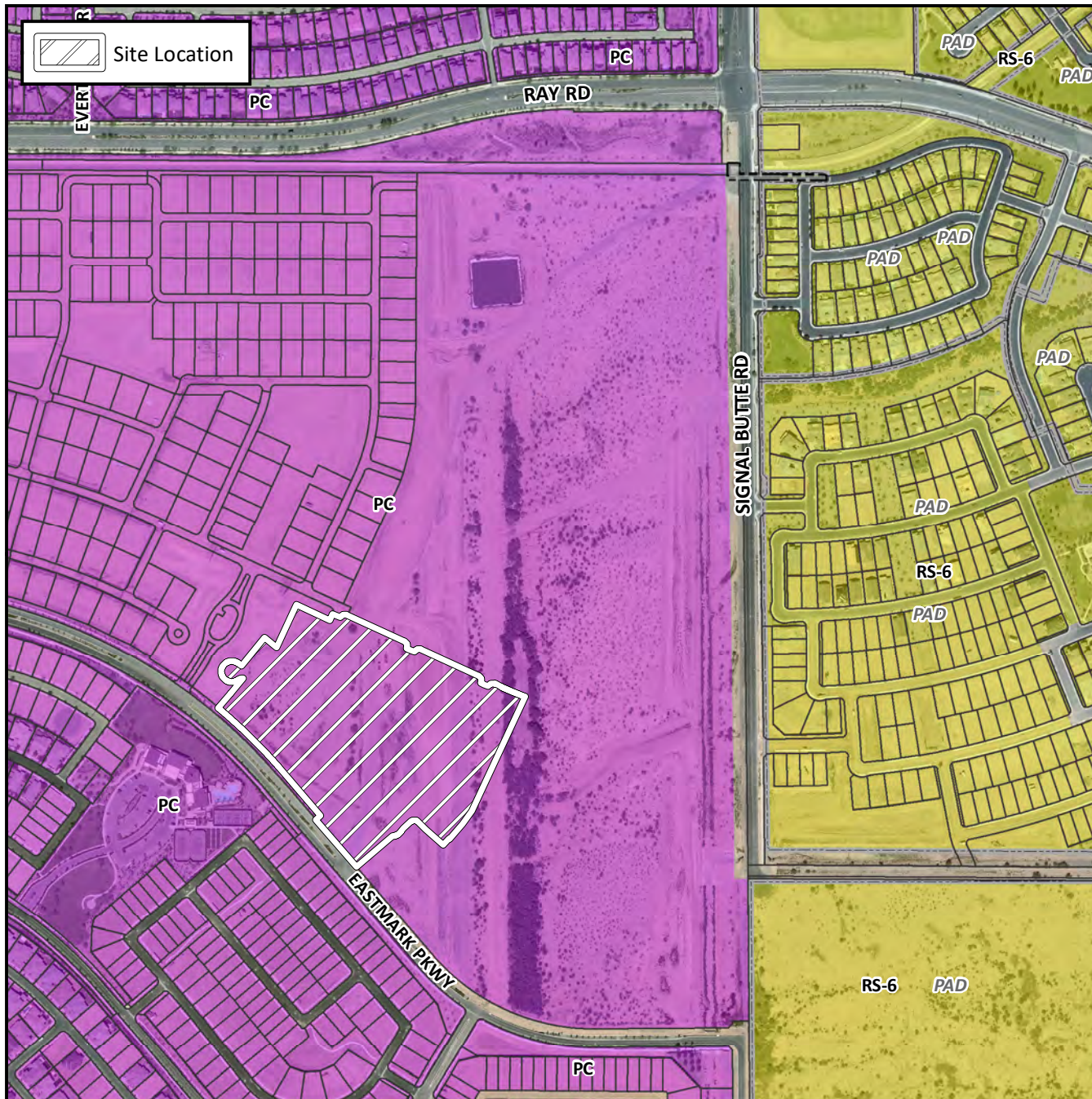


## Final Plat Vicinity Map



## Case Details

### Project:

The Estates at Eastmark, Parcel 8-8

### Language:

(District 6) The 5500 block of South Eastmark Parkway (northeast side). Located south and west of the southwest corner of Signal Butte and Ray Roads. 38 PCD single residence lots. (15.4 ± acres). Jen Arizona 4, LLC, Developer; Raymond S. Munoz III, EPS Group, Surveyor.

