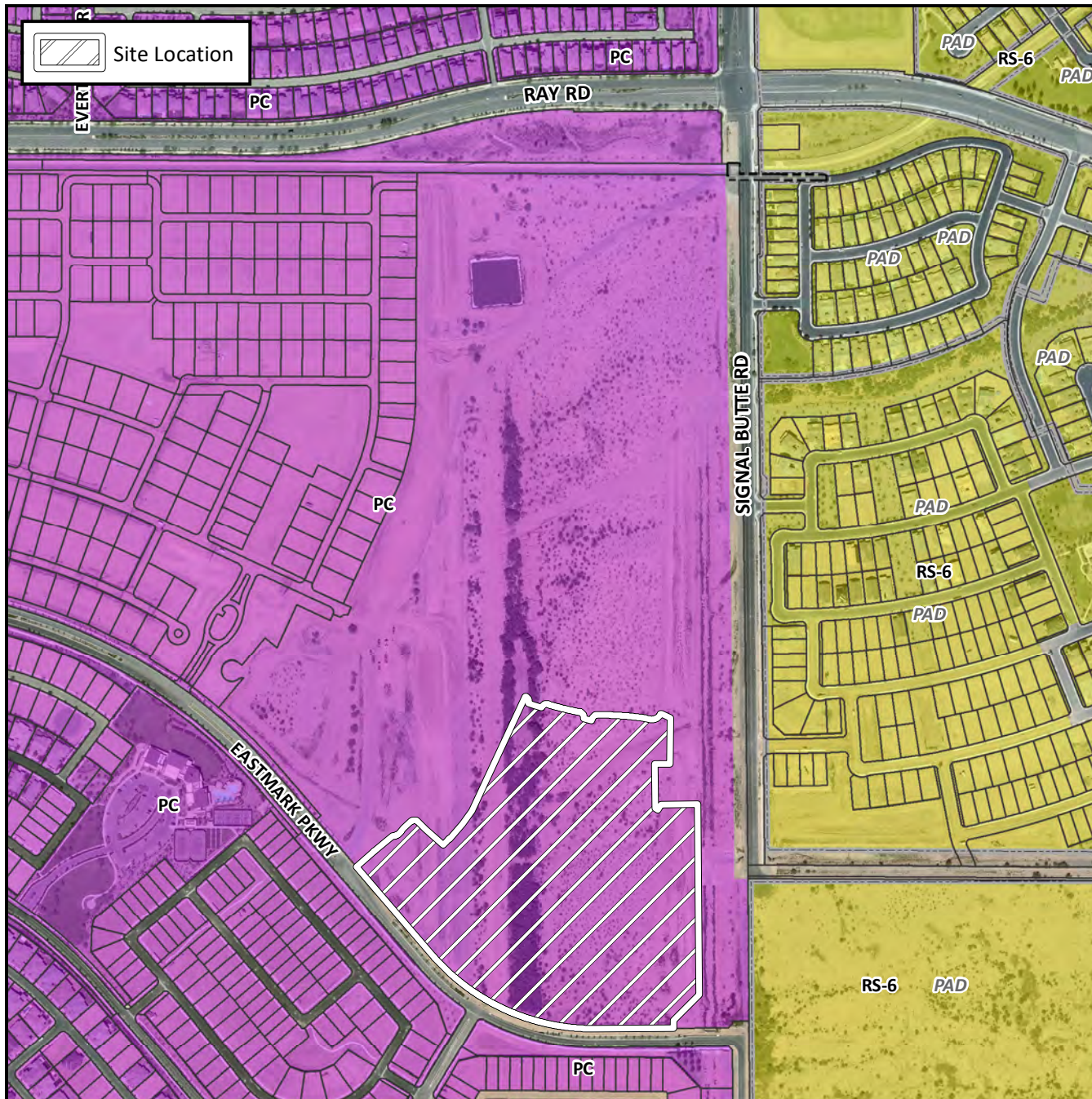


Final Plat Vicinity Map



Case Details

Project:

The Estates at Eastmark, Parcel 8-9

Language:

(District 6) The 5600 block of South Signal Butte Road (west side) and the 5600 block of South Eastmark Parkway (northeast side). Located south of the southwest corner of Signal Butte and Ray Roads. 65 PCD single residence lots. (25.3 ± acres). Jen Arizona 4, LLC, Developer; Raymond S. Munoz III, EPS Group, Surveyor.

