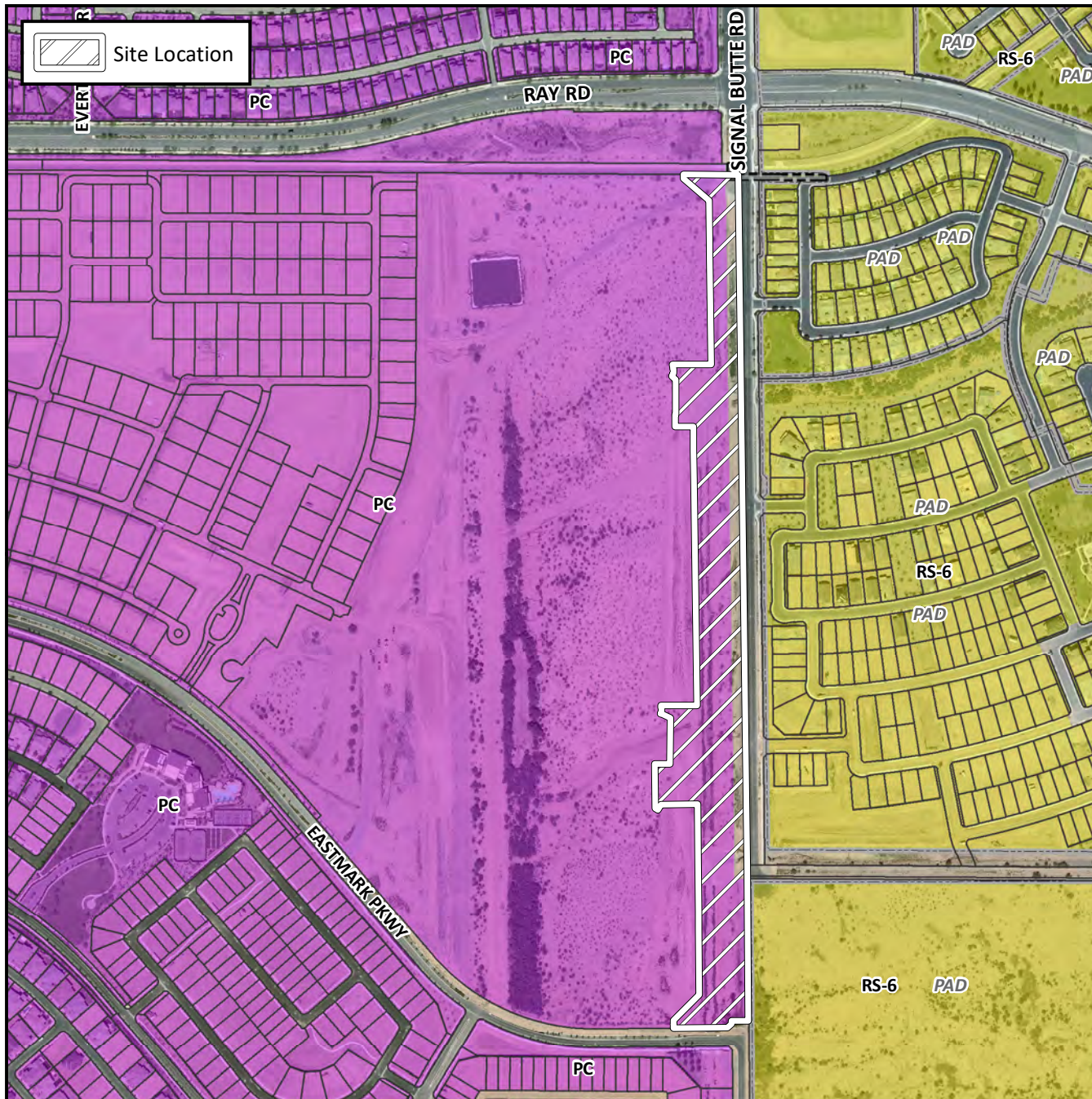


## Final Plat Vicinity Map



## Case Details

### Project:

The Estates at Eastmark, Signal Butte Road

### Language:

(District 6) The 5100 to 5700 blocks of South Signal Butte Road (both sides). Signal Butte Road between Ray Roads and Eastmark Parkway. (14.5 ± acres). Jen Arizona 4, LLC, Developer; Raymond S. Munoz III, EPS Group, Surveyor.

