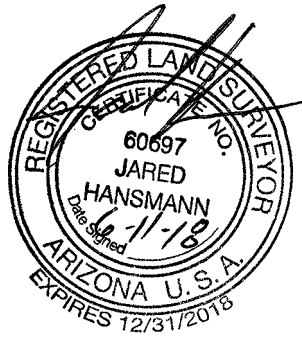


# EXHIBIT "B"

## LEGAL DESCRIPTION MOUNTAIN VISTA D.E. ABANDONMENT MESA, ARIZONA



JUNE 10, 2018  
Job No. 2017-100  
Page 1 of 2

THAT PORTION OF THE DRAINAGE EASEMENT ACCORDING TO DOCUMENT NO. 2007-1258749, RECORDS OF MARICOPA COUNTY, ARIZONA LOCATED WITHIN LOT 3B OF LOT 3 MOUNTAIN VISTA MARKETPLACE LOT SPLIT ACCORDING TO BOOK 1002 OF MAPS, PAGE 49, RECORDS OF MARICOPA COUNTY, ARIZONA, ALSO BEING A PORTION OF THE NORTHEAST QUARTER OF SECTION 35, TOWNSHIP 1 NORTH, RANGE 7 EAST OF THE GILA AND SALT RIVER BASE AND MERIDIAN, MARICOPA COUNTY, ARIZONA, DESCRIBED AS FOLLOWS:

COMMENCING AT A BRASS CAP IN A HAND HOLE AT THE NORTHEAST CORNER OF SAID SECTION 35, FROM WHICH A BRASS CAP IN A HAND HOLE AT THE NORTH QUARTER CORNER OF SAID SECTION 35, BEARS SOUTH 89 DEGREES 51 MINUTES 47 SECONDS WEST, 2,650.99 FEET;

THENCE SOUTH 89 DEGREES 51 MINUTES 47 SECONDS WEST, ON THE NORTH LINE OF SAID SECTION 35, A DISTANCE OF 928.31 FEET;

THENCE SOUTH 00 DEGREES 08 MINUTES 13 SECONDS EAST, DEPARTING THE NORTH LINE OF SAID SECTION 35, A DISTANCE OF 65.01 FEET TO THE POINT OF BEGINNING OF THE EASEMENT HEREIN DESCRIBED;

THENCE NORTH 89 DEGREES 51 MINUTES 47 SECONDS EAST, A DISTANCE OF 10.00 FEET;

THENCE SOUTH 00 DEGREES 08 MINUTES 13 SECONDS EAST, A DISTANCE OF 28.00 FEET;

THENCE SOUTH 89 DEGREES 51 MINUTES 47 SECONDS WEST, A DISTANCE OF 51.77 FEET;

THENCE SOUTH 00 DEGREES 00 MINUTES 01 SECONDS EAST, A DISTANCE OF 386.96 FEET;

THENCE NORTH 89 DEGREES 50 MINUTES 07 SECONDS EAST, A DISTANCE OF 62.17 FEET;

THENCE SOUTH 00 DEGREES 00 MINUTES 39 SECONDS WEST, A DISTANCE OF 172.90 FEET;

THENCE SOUTH 21 DEGREES 07 MINUTES 24 SECONDS EAST, A DISTANCE OF 74.64 FEET;

THENCE NORTH 69 DEGREES 49 MINUTES 17 SECONDS EAST, A DISTANCE OF 211.58 FEET;

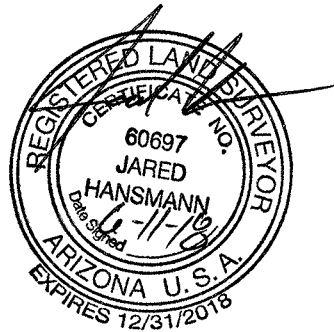
THENCE SOUTH 20 DEGREES 10 MINUTES 43 SECONDS EAST, A DISTANCE OF 98.85 FEET;

THENCE SOUTH 25 DEGREES 15 MINUTES 48 SECONDS WEST, A DISTANCE OF 22.71 FEET;

THENCE SOUTH 69 DEGREES 49 MINUTES 17 SECONDS WEST, A DISTANCE OF 359.21 FEET;

THENCE SOUTH 90 DEGREES 00 MINUTES 00 SECONDS WEST, A DISTANCE OF 262.27 FEET;

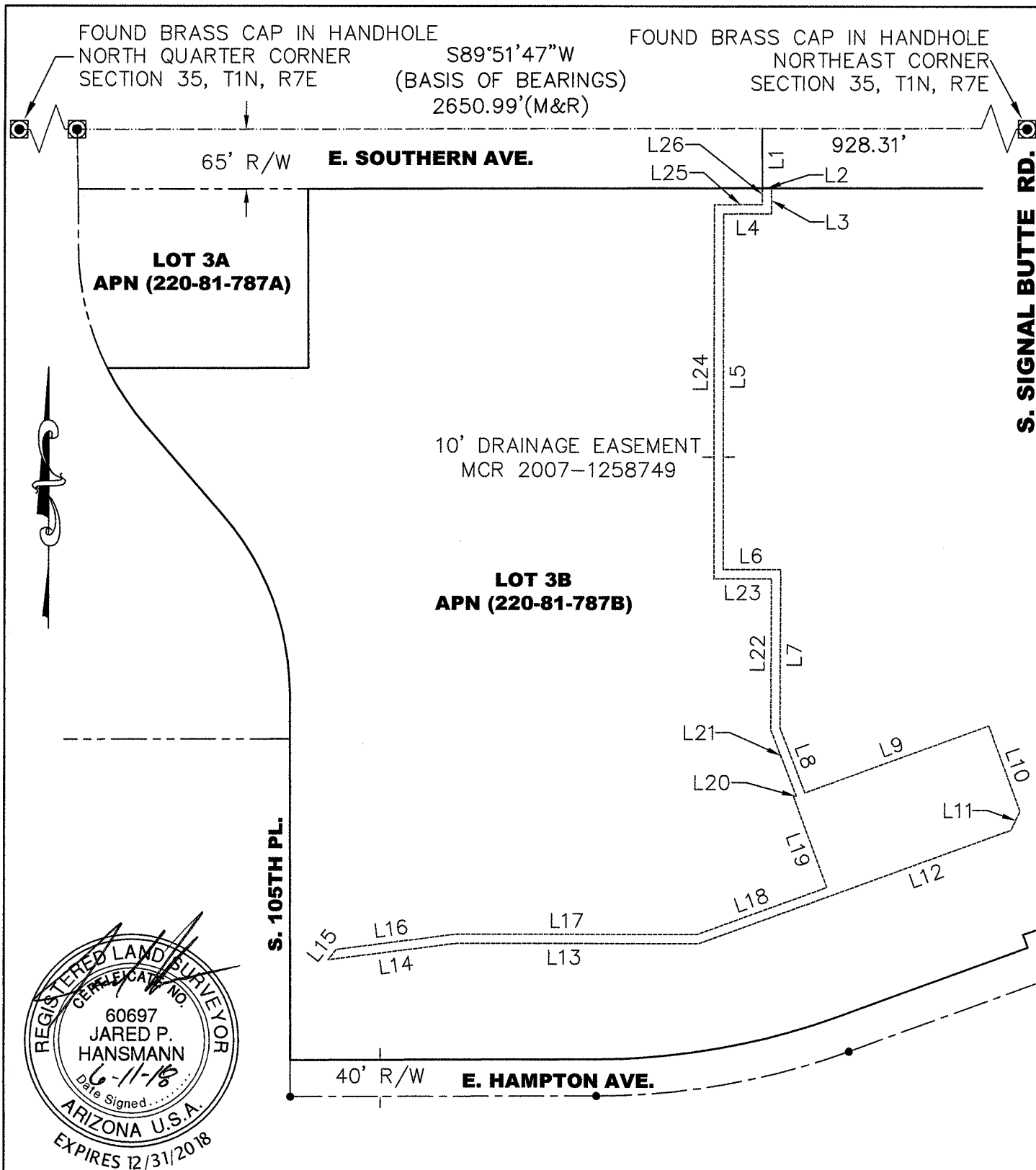
**LEGAL DESCRIPTION  
MOUNTAIN VISTA D.E. ABANDONMENT  
MESA, ARIZONA**



JUNE 10, 2018  
Job No. 2017-100  
Page 2 of 2

THENCE SOUTH 82 DEGREES 39 MINUTES 15 SECONDS WEST, A DISTANCE OF 140.12 FEET;  
THENCE NORTH 37 DEGREES 41 MINUTES 17 SECONDS EAST, A DISTANCE OF 14.15 FEET;  
THENCE NORTH 82 DEGREES 39 MINUTES 15 SECONDS EAST, A DISTANCE OF 130.74 FEET;  
THENCE NORTH 90 DEGREES 00 MINUTES 00 SECONDS EAST, A DISTANCE OF 261.14 FEET;  
THENCE NORTH 69 DEGREES 49 MINUTES 17 SECONDS EAST, A DISTANCE OF 149.12 FEET;  
THENCE NORTH 20 DEGREES 10 MINUTES 43 SECONDS WEST, A DISTANCE OF 104.78 FEET;  
THENCE NORTH 69 DEGREES 49 MINUTES 17 SECONDS EAST, A DISTANCE OF 2.92 FEET;  
THENCE NORTH 21 DEGREES 07 MINUTES 24 SECONDS WEST, A DISTANCE OF 76.34 FEET;  
THENCE NORTH 00 DEGREES 00 MINUTES 39 SECONDS EAST, A DISTANCE OF 164.74 FEET;  
THENCE SOUTH 89 DEGREES 50 MINUTES 07 SECONDS WEST, A DISTANCE OF 62.17 FEET;  
THENCE NORTH 00 DEGREES 00 MINUTES 01 SECONDS WEST, A DISTANCE OF 406.96 FEET;  
THENCE NORTH 89 DEGREES 51 MINUTES 47 SECONDS EAST, A DISTANCE OF 51.74 FEET;  
THENCE NORTH 00 DEGREES 08 MINUTES 13 SECONDS WEST, A DISTANCE OF 18.00 FEET  
TO THE POINT OF BEGINNING.

SAID PARCEL CONTAINS 38,889 SQUARE FEET OR 0.893 ACRES, MORE OR LESS.



**SIG**

**SURVEY INNOVATION  
GROUP, INC**

**DRAINAGE EASEMENT ABANDONMENT  
MOUNTAIN VISTA  
MESA, ARIZONA**

Ph (480) 922 0780 *Land Surveying Services* Fx (480) 922 0781  
22425 N. 16th ST., SUITE 1, PHOENIX, ARIZONA 85024

JOB #17-100	DWG: 2017-100 DE ABAND.	DATE 6-10-18
SCALE: 1"=150'	DRAWN: JPH	CHK: JAS
		SHEET 1 OF 2

Line Table		
LINE	DIRECTION	LENGTH
L1	N0°08'13"W	65.01'
L2	N89°51'47"E	10.00'
L3	S0°08'13"E	28.00'
L4	S89°51'47"W	51.77'
L5	S0°00'01"E	386.96'
L6	N89°50'07"E	62.17'
L7	S0°00'39"W	172.90'
L8	S21°07'24"E	74.64'
L9	N69°49'17"E	211.58'
L10	S20°10'43"E	98.85'
L11	S25°15'48"W	22.71'
L12	S69°49'17"W	359.21'
L13	N90°00'00"W	262.27'
L14	S82°39'15"W	140.12'
L15	N37°41'17"E	14.15'
L16	N82°39'15"E	130.74'
L17	N90°00'00"E	261.14'
L18	N69°49'17"E	149.12'
L19	N20°10'43"W	104.78'
L20	N69°49'17"E	2.92'

Line Table		
LINE	DIRECTION	LENGTH
L21	N21°07'24"W	76.34'
L22	N0°00'39"E	164.74'
L23	S89°50'07"W	62.17'
L24	N0°00'01"W	406.96'
L25	N89°51'47"E	51.74'
L26	N0°08'13"W	18.00'



**SIG**  
**SURVEY INNOVATION**  
**GROUP, INC**

**DRAINAGE EASEMENT ABANDONMENT**  
**MOUNTAIN VISTA**  
**MESA, ARIZONA**

Ph (480) 922 0780 *Land Surveying Services* Fx (480) 922 0781  
 22425 N. 16th ST., SUITE 1, PHOENIX, ARIZONA 85024

JOB #17-100	DWG: 2017-100 DE ABAND.	DATE 6-10-18
SCALE: N.T.S	DRAWN: JPH	CHK: JAS
SHEET 2 OF 2		