

# EXHIBIT "A"

## LEGAL DESCRIPTION MOUNTAIN VISTA 20' PUE ABANDONMENT MESA, ARIZONA



JUNE 10, 2018  
Job No. 2017-100  
Page 1 of 4

THAT PORTION OF THE PUBLIC UTILITY EASEMENT ACCORDING TO DOCUMENT NO. 2007-1254165, RECORDS OF MARICOPA COUNTY, ARIZONA LOCATED WITHIN LOT 3B OF LOT 3 MOUNTAIN VISTA MARKETPLACE LOT SPLIT ACCORDING TO BOOK 1002 OF MAPS, PAGE 49, RECORDS OF MARICOPA COUNTY, ARIZONA, ALSO BEING A PORTION OF THE NORTHEAST QUARTER OF SECTION 35, TOWNSHIP 1 NORTH, RANGE 7 EAST OF THE GILA AND SALT RIVER BASE AND MERIDIAN, MARICOPA COUNTY, ARIZONA, DESCRIBED AS FOLLOWS:

COMMENCING AT A BRASS CAP IN A HAND HOLE AT THE NORTHEAST CORNER OF SAID SECTION 35, FROM WHICH A BRASS CAP IN A HAND HOLE AT THE NORTH QUARTER CORNER OF SAID SECTION 35, BEARS SOUTH 89 DEGREES 51 MINUTES 47 SECONDS WEST, 2,650.99 FEET;

THENCE SOUTH 89 DEGREES 51 MINUTES 47 SECONDS WEST, ON THE NORTH LINE OF SAID SECTION 35, A DISTANCE OF 987.06 FEET;

THENCE SOUTH 00 DEGREES 08 MINUTES 13 SECONDS EAST, DEPARTING THE NORTH LINE OF SAID SECTION 35, A DISTANCE OF 110.02 FEET TO THE POINT OF BEGINNING OF THE EASEMENT HEREIN DESCRIBED;

THENCE NORTH 89 DEGREES 50 MINUTES 07 SECONDS EAST, A DISTANCE OF 38.44 FEET;

THENCE SOUTH 00 DEGREES 09 MINUTES 53 SECONDS EAST, A DISTANCE OF 15.00 FEET;

THENCE NORTH 89 DEGREES 50 MINUTES 07 SECONDS EAST, A DISTANCE OF 14.63 FEET;

THENCE SOUTH 00 DEGREES 09 MINUTES 53 SECONDS EAST, A DISTANCE OF 10.00 FEET;

THENCE SOUTH 89 DEGREES 50 MINUTES 07 SECONDS WEST, A DISTANCE OF 14.63 FEET;

THENCE SOUTH 00 DEGREES 09 MINUTES 53 SECONDS EAST, A DISTANCE OF 10.00 FEET;

THENCE NORTH 89 DEGREES 50 MINUTES 07 SECONDS EAST, A DISTANCE OF 16.50 FEET;

THENCE SOUTH 00 DEGREES 09 MINUTES 53 SECONDS EAST, A DISTANCE OF 10.00 FEET;

THENCE SOUTH 89 DEGREES 50 MINUTES 07 SECONDS WEST, A DISTANCE OF 16.50 FEET;

THENCE SOUTH 00 DEGREES 09 MINUTES 53 SECONDS EAST, A DISTANCE OF 281.27 FEET;

THENCE NORTH 89 DEGREES 48 MINUTES 26 SECONDS EAST, A DISTANCE OF 16.89 FEET;

THENCE SOUTH 00 DEGREES 09 MINUTES 53 SECONDS EAST, A DISTANCE OF 10.00 FEET;

**LEGAL DESCRIPTION  
MOUNTAIN VISTA 20' PUE ABANDONMENT  
MESA, ARIZONA**



JUNE 10, 2018  
Job No. 2017-100  
Page 2 of 4

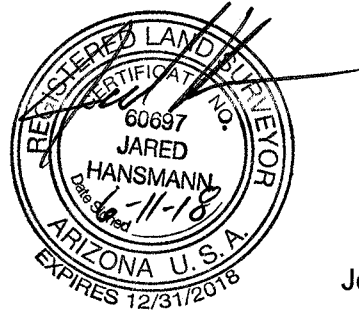
THENCE SOUTH 89 DEGREES 48 MINUTES 26 SECONDS WEST, A DISTANCE OF 16.89 FEET;  
THENCE SOUTH 00 DEGREES 09 MINUTES 53 SECONDS EAST, A DISTANCE OF 13.69 FEET;  
THENCE NORTH 89 DEGREES 50 MINUTES 07 SECONDS EAST, A DISTANCE OF 59.67 FEET;  
THENCE SOUTH 00 DEGREES 00 MINUTES 39 SECONDS WEST, A DISTANCE OF 84.33 FEET;  
THENCE SOUTH 89 DEGREES 59 MINUTES 21 SECONDS EAST, A DISTANCE OF 21.75 FEET;  
THENCE SOUTH 00 DEGREES 00 MINUTES 39 SECONDS WEST, A DISTANCE OF 10.00 FEET;  
THENCE NORTH 89 DEGREES 59 MINUTES 21 SECONDS WEST, A DISTANCE OF 21.75 FEET;  
THENCE SOUTH 00 DEGREES 00 MINUTES 39 SECONDS WEST, A DISTANCE OF 102.92 FEET;  
THENCE SOUTH 89 DEGREES 59 MINUTES 21 SECONDS EAST, A DISTANCE OF 16.53 FEET;  
THENCE SOUTH 00 DEGREES 00 MINUTES 39 SECONDS WEST, A DISTANCE OF 10.00 FEET;  
THENCE NORTH 89 DEGREES 59 MINUTES 21 SECONDS WEST, A DISTANCE OF 16.53 FEET;  
THENCE SOUTH 00 DEGREES 00 MINUTES 39 SECONDS WEST, A DISTANCE OF 82.38 FEET;  
THENCE SOUTH 89 DEGREES 50 MINUTES 07 SECONDS WEST, A DISTANCE OF 159.59 FEET;  
THENCE SOUTH 00 DEGREES 07 MINUTES 44 SECONDS EAST, A DISTANCE OF 10.60 FEET;  
THENCE SOUTH 89 DEGREES 52 MINUTES 16 SECONDS WEST, A DISTANCE OF 10.00 FEET;  
THENCE NORTH 00 DEGREES 07 MINUTES 44 SECONDS WEST, A DISTANCE OF 10.60 FEET;  
THENCE SOUTH 89 DEGREES 50 MINUTES 07 SECONDS WEST, A DISTANCE OF 171.08 FEET;  
THENCE SOUTH 00 DEGREES 07 MINUTES 44 SECONDS EAST, A DISTANCE OF 10.60 FEET;  
THENCE SOUTH 89 DEGREES 50 MINUTES 07 SECONDS WEST, A DISTANCE OF 10.00 FEET;  
THENCE NORTH 00 DEGREES 07 MINUTES 44 SECONDS WEST, A DISTANCE OF 10.60 FEET;  
THENCE SOUTH 89 DEGREES 50 MINUTES 07 SECONDS WEST, A DISTANCE OF 24.71 FEET;  
THENCE SOUTH 00 DEGREES 09 MINUTES 53 SECONDS EAST, A DISTANCE OF 114.12 FEET;

**LEGAL DESCRIPTION  
MOUNTAIN VISTA 20' PUE ABANDONMENT  
MESA, ARIZONA**



JUNE 10, 2018  
Job No. 2017-100  
Page 3 of 4

THENCE SOUTH 90 DEGREES 00 MINUTES 00 SECONDS WEST, A DISTANCE OF 28.01 FEET;  
THENCE NORTH 00 DEGREES 00 MINUTES 00 SECONDS EAST, A DISTANCE OF 10.00 FEET;  
THENCE NORTH 90 DEGREES 00 MINUTES 00 SECONDS EAST, A DISTANCE OF 7.99 FEET;  
THENCE NORTH 00 DEGREES 09 MINUTES 53 SECONDS WEST, A DISTANCE OF 185.57 FEET;  
THENCE SOUTH 89 DEGREES 49 MINUTES 58 SECONDS WEST, A DISTANCE OF 145.03 FEET;  
THENCE NORTH 00 DEGREES 10 MINUTES 59 SECONDS WEST, A DISTANCE OF 19.99 FEET;  
THENCE NORTH 89 DEGREES 49 MINUTES 58 SECONDS EAST, A DISTANCE OF 165.03 FEET;  
THENCE SOUTH 00 DEGREES 09 MINUTES 53 SECONDS EAST, A DISTANCE OF 81.50 FEET;  
THENCE NORTH 89 DEGREES 50 MINUTES 07 SECONDS EAST, A DISTANCE OF 355.44 FEET;  
THENCE NORTH 00 DEGREES 00 MINUTES 39 SECONDS EAST, A DISTANCE OF 205.43 FEET;  
THENCE SOUTH 89 DEGREES 59 MINUTES 21 SECONDS WEST, A DISTANCE OF 14.79 FEET;  
THENCE NORTH 00 DEGREES 00 MINUTES 39 SECONDS EAST, A DISTANCE OF 10.00 FEET;  
THENCE NORTH 89 DEGREES 59 MINUTES 21 SECONDS EAST, A DISTANCE OF 14.79 FEET;  
THENCE NORTH 00 DEGREES 00 MINUTES 39 SECONDS EAST, A DISTANCE OF 34.20 FEET;  
THENCE SOUTH 89 DEGREES 50 MINUTES 07 SECONDS WEST, A DISTANCE OF 150.42 FEET;  
THENCE SOUTH 00 DEGREES 09 MINUTES 53 SECONDS EAST, A DISTANCE OF 33.28 FEET;  
THENCE SOUTH 89 DEGREES 50 MINUTES 07 SECONDS WEST, A DISTANCE OF 10.00 FEET;  
THENCE NORTH 00 DEGREES 09 MINUTES 53 SECONDS WEST, A DISTANCE OF 33.28 FEET;  
THENCE SOUTH 89 DEGREES 50 MINUTES 07 SECONDS WEST, A DISTANCE OF 90.78 FEET;  
THENCE SOUTH 00 DEGREES 08 MINUTES 24 SECONDS EAST, A DISTANCE OF 33.54 FEET;  
THENCE SOUTH 89 DEGREES 50 MINUTES 07 SECONDS WEST, A DISTANCE OF 10.00 FEET;

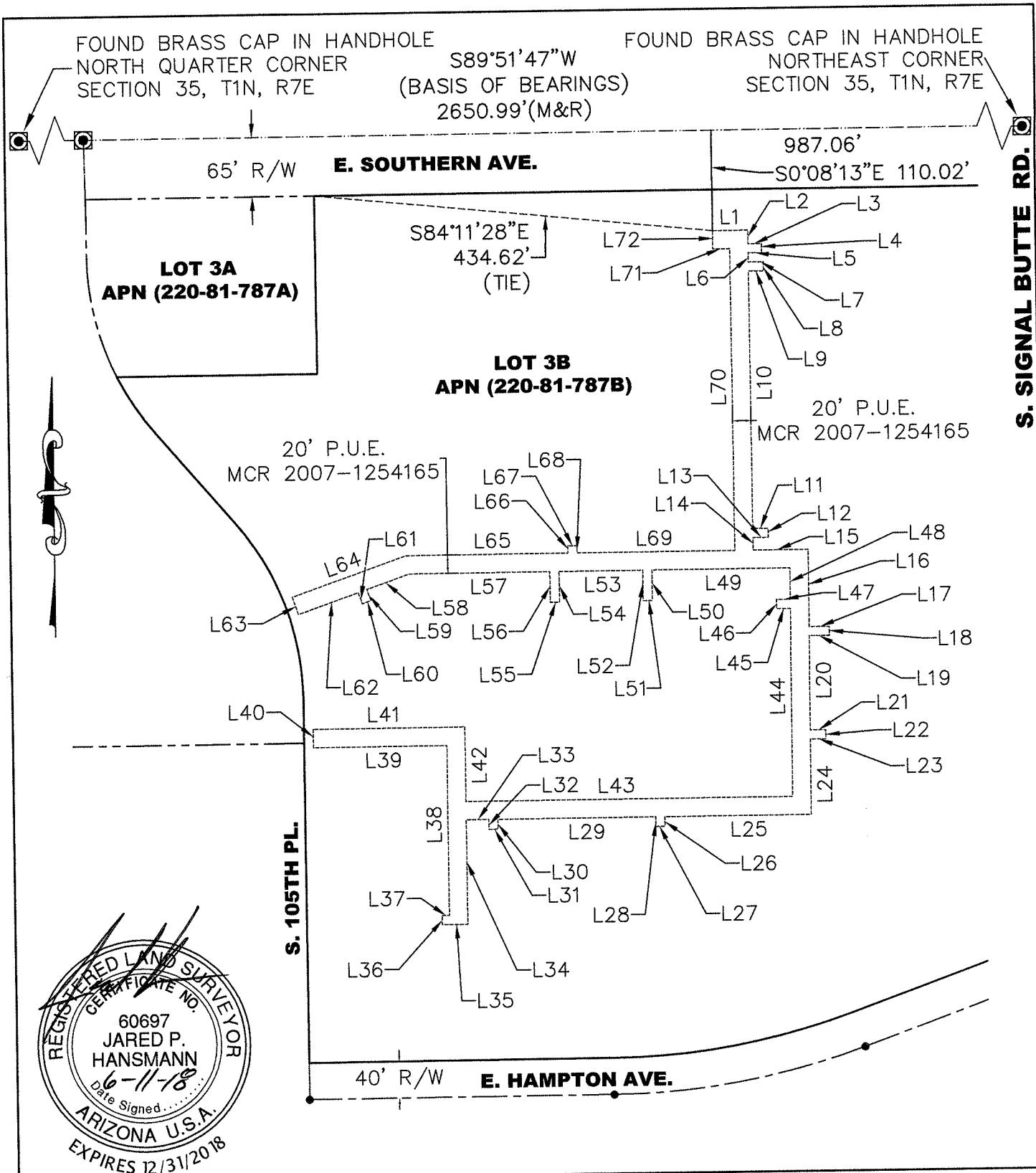


**LEGAL DESCRIPTION  
MOUNTAIN VISTA 20' PUE ABANDONMENT  
MESA, ARIZONA**

JUNE 10, 2018  
Job No. 2017-100  
Page 4 of 4

THENCE NORTH 00 DEGREES 08 MINUTES 24 SECONDS WEST, A DISTANCE OF 33.54 FEET;  
THENCE SOUTH 89 DEGREES 50 MINUTES 07 SECONDS WEST, A DISTANCE OF 152.84 FEET;  
THENCE SOUTH 70 DEGREES 36 MINUTES 16 SECONDS WEST, A DISTANCE OF 49.14 FEET;  
THENCE SOUTH 19 DEGREES 23 MINUTES 44 SECONDS EAST, A DISTANCE OF 13.00 FEET;  
THENCE SOUTH 70 DEGREES 36 MINUTES 16 SECONDS WEST, A DISTANCE OF 10.00 FEET;  
THENCE NORTH 19 DEGREES 23 MINUTES 44 SECONDS WEST, A DISTANCE OF 13.00 FEET;  
THENCE SOUTH 70 DEGREES 36 MINUTES 16 SECONDS WEST, A DISTANCE OF 69.11 FEET;  
THENCE NORTH 19 DEGREES 05 MINUTES 26 SECONDS WEST, A DISTANCE OF 20.00 FEET;  
THENCE NORTH 70 DEGREES 36 MINUTES 16 SECONDS EAST, A DISTANCE OF 131.53 FEET;  
THENCE NORTH 89 DEGREES 50 MINUTES 07 SECONDS EAST, A DISTANCE OF 176.24 FEET;  
THENCE NORTH 00 DEGREES 08 MINUTES 24 SECONDS WEST, A DISTANCE OF 8.00 FEET;  
THENCE NORTH 89 DEGREES 50 MINUTES 07 SECONDS EAST, A DISTANCE OF 10.00 FEET;  
THENCE SOUTH 00 DEGREES 08 MINUTES 24 SECONDS EAST, A DISTANCE OF 8.00 FEET;  
THENCE NORTH 89 DEGREES 50 MINUTES 07 SECONDS EAST, A DISTANCE OF 171.58 FEET;  
THENCE NORTH 00 DEGREES 09 MINUTES 53 SECONDS WEST, A DISTANCE OF 329.96 FEET;  
THENCE SOUTH 89 DEGREES 50 MINUTES 07 SECONDS WEST, A DISTANCE OF 18.44 FEET;  
THENCE NORTH 00 DEGREES 09 MINUTES 53 SECONDS WEST, A DISTANCE OF 20.00 FEET  
TO THE POINT OF BEGINNING.

SAID PARCEL CONTAINS 40,570 SQUARE FEET OR 0.931 ACRES, MORE OR LESS.



**S. SIGNAL BUTTE RD.**

**SIG**  
**SURVEY INNOVATION**  
**GROUP, INC**

**PUE ABANDONMENT**  
**MOUNTAIN VISTA**  
**MESA, ARIZONA**

Ph (480) 922 0780 *Land Surveying Services* Fx (480) 922 0781  
22425 N. 16th ST., SUITE 1, PHOENIX, ARIZONA 85024

JOB #17-100	DWG: 2017-100 PUE ABAND.	DATE 6-10-18
SCALE: 1"=150'	DRAWN: JPH	CHK: JAS
		SHEET 1 OF 3

Line Table		
LINE	DIRECTION	LENGTH
L1	N89°50'07"E	38.44'
L2	S0°09'53"E	15.00'
L3	N89°50'07"E	14.63'
L4	S0°09'53"E	10.00'
L5	S89°50'07"W	14.63'
L6	S0°09'53"E	10.00'
L7	N89°50'07"E	16.50'
L8	S0°09'53"E	10.00'
L9	S89°50'07"W	16.50'
L10	S0°09'53"E	281.27'
L11	N89°48'26"E	16.89'
L12	S0°09'53"E	10.00'
L13	S89°48'26"W	16.89'
L14	S0°09'53"E	13.69'
L15	N89°50'07"E	59.67'
L16	S0°00'39"W	84.33'
L17	S89°59'21"E	21.75'
L18	S0°00'39"W	10.00'
L19	N89°59'21"W	21.75'
L20	S0°00'39"W	102.92'

Line Table		
LINE	DIRECTION	LENGTH
L21	S89°59'21"E	16.53'
L22	S0°00'39"W	10.00'
L23	N89°59'21"W	16.53'
L24	S0°00'39"W	82.38'
L25	S89°50'07"W	159.59'
L26	S0°07'44"E	10.60'
L27	S89°52'16"W	10.00'
L28	N0°07'44"W	10.60'
L29	S89°50'07"W	171.08'
L30	S0°07'44"E	10.60'
L31	S89°50'07"W	10.00'
L32	N0°07'44"W	10.60'
L33	S89°50'07"W	24.71'
L34	S0°09'53"E	114.12'
L35	N90°00'00"W	28.01'
L36	N0°00'00"E	10.00'
L37	N90°00'00"E	7.99'
L38	N0°09'53"W	185.57'
L39	S89°49'58"W	145.03'
L40	N0°10'59"W	19.99'



**SIG**  
**SURVEY INNOVATION**  
**GROUP, INC**

**PUE ABANDONMENT**  
**MOUNTAIN VISTA**  
**MESA, ARIZONA**

Ph (480) 922 0780 *Land Surveying Services* Fx (480) 922 0781  
 22425 N. 16th ST., SUITE 1, PHOENIX, ARIZONA 85024

JOB #17-100	DWG: 2017-100 PUE ABAND.	DATE 6-10-18
SCALE: N.T.S	DRAWN: JPH	CHK: JAS
		SHEET 2 OF 3

Line Table		
LINE	DIRECTION	LENGTH
L41	N89°49'58"E	165.03'
L42	S0°09'53"E	81.50'
L43	N89°50'07"E	355.44'
L44	N0°00'39"E	205.43'
L45	S89°59'21"W	14.79'
L46	N0°00'39"E	10.00'
L47	N89°59'21"E	14.79'
L48	N0°00'39"E	34.20'
L49	S89°50'07"W	150.42'
L50	S0°09'53"E	33.28'
L51	S89°50'07"W	10.00'
L52	N0°09'53"W	33.28'
L53	S89°50'07"W	90.78'
L54	S0°08'24"E	33.54'
L55	S89°50'07"W	10.00'
L56	N0°08'24"W	33.54'
L57	S89°50'07"W	152.84'
L58	S70°36'16"W	49.14'
L59	S19°23'44"E	13.00'
L60	S70°36'16"W	10.00'

Line Table		
LINE	DIRECTION	LENGTH
L61	N19°23'44"W	13.00'
L62	S70°36'16"W	69.11'
L63	N19°05'26"W	20.00'
L64	N70°36'16"E	131.53'
L65	N89°50'07"E	176.24'
L66	N0°08'24"W	8.00'
L67	N89°50'07"E	10.00'
L68	S0°08'24"E	8.00'
L69	N89°50'07"E	171.58'
L70	N0°09'53"W	329.96'
L71	S89°50'07"W	18.44'
L72	N0°09'53"W	20.00'



**SIG**  
**SURVEY INNOVATION**  
**GROUP, INC**

**PUE ABANDONMENT**  
**MOUNTAIN VISTA**  
**MESA, ARIZONA**

Ph (480) 922 0780 *Land Surveying Services* Fx (480) 922 0781  
 22425 N. 16th ST., SUITE 1, PHOENIX, ARIZONA 85024

JOB #17-100	DWG: 2017-100 PUE ABAND.	DATE 6-10-18
SCALE: 1"=150'	DRAWN: JPH	CHK: JAS
		SHEET 2 OF 3