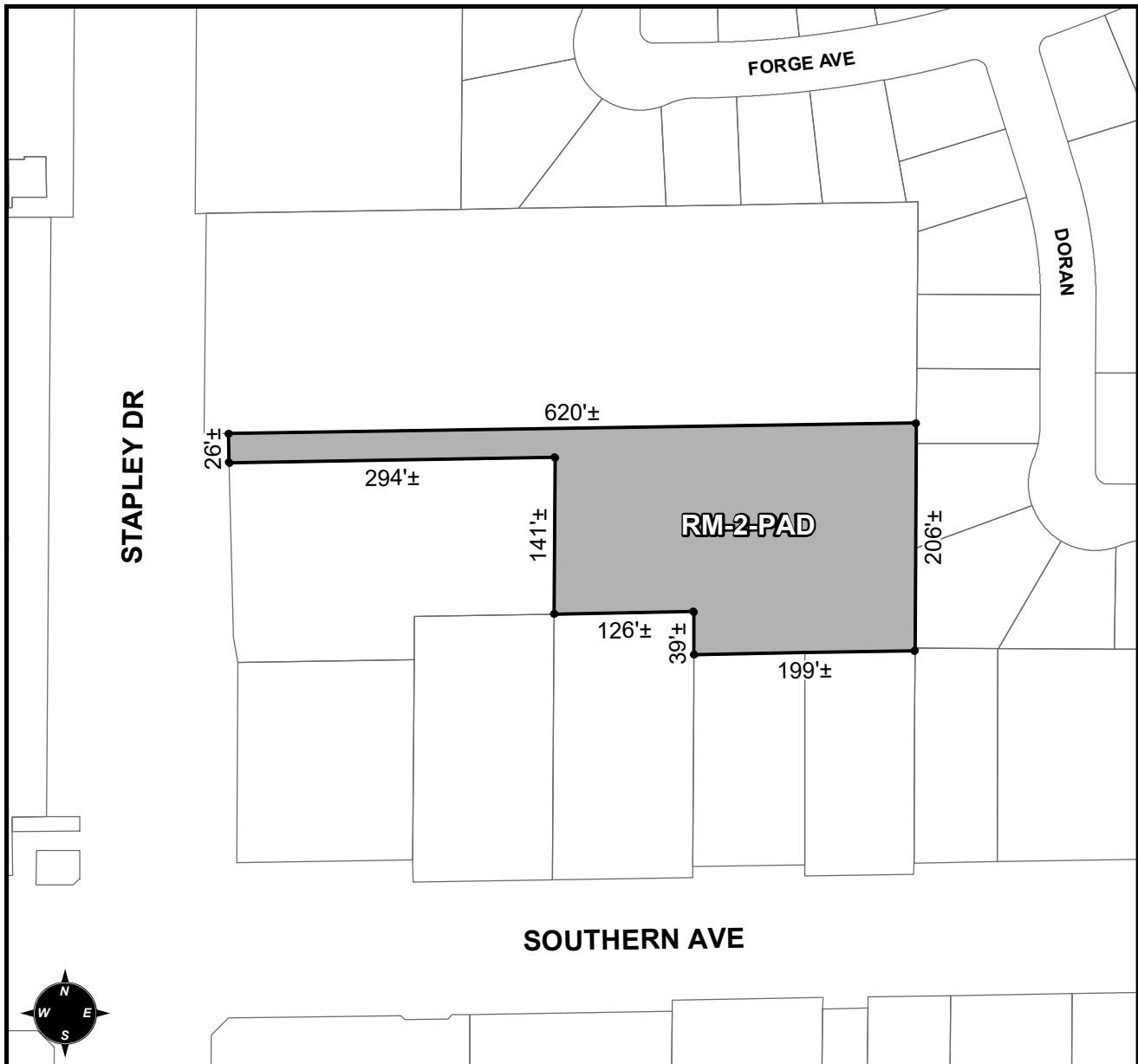




OFFICIAL SUPPLEMENTARY ZONING MAP AMENDING THE CITY OF MESA ZONING MAP



CASE: ZON18-00359
ACREAGE: 1.6±
REQUEST: REZONE FROM LC TO RM-2-PAD

ORDINANCE: _____

Please be advised that the attached zoning changes were approved by the Mesa City Council on _____, 2018 by Ordinance # _____. If you have any questions concerning these changes, contact the City of Mesa Planning Division at 480-644-2385.

MAYOR

ATTEST: _____
CITY CLERK

DATE: _____