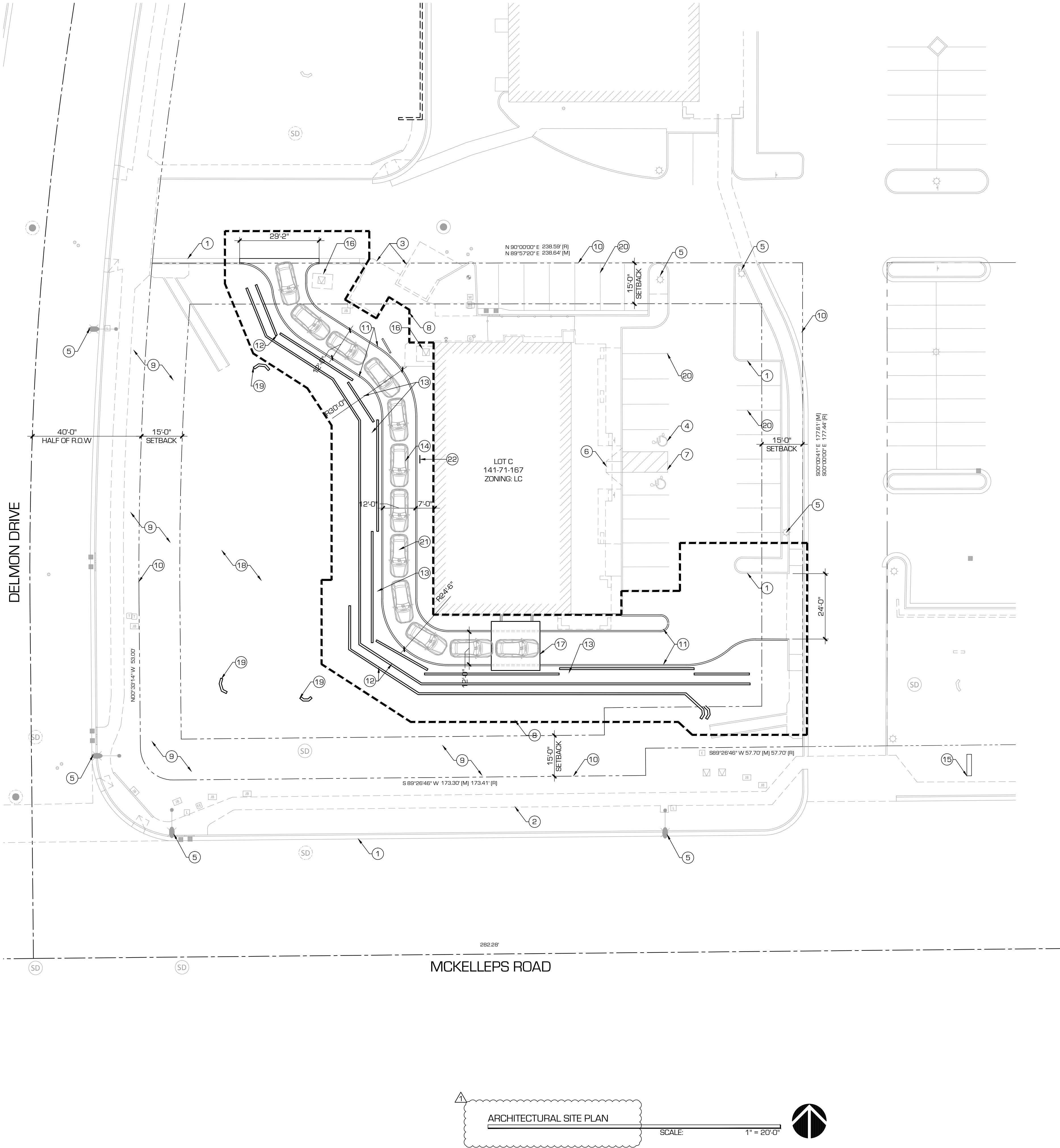


6/5/2018 9:47:02 AM - Z:\BN1419 Dunkin Donuts Drive Thru Addition Mesa\Drawings\DKIN\DONUTS DR DRIVE THRU ADDITION_Sheet Set.SP-1 ARCHITECTURAL SITE PLAN.dwg - MACP01



KEYED NOTES

1. EXISTING CONCRETE CURB.
2. EXISTING WALKWAY.
3. EXISTING TRASH ENCLOSURE.
4. EXISTING HANDICAP PARKING SIGN.
5. EXISTING SITE LIGHTING.
6. EXISTING 6' ADA ACCESS RAMP W/ 2' DETECTABLE WARNING SURFACE.
7. EXISTING ADA ACCESS AISLE.
8. LIMIT OF NEW LANDSCAPE AREA. REFER TO LANDSCAPE.
9. EXISTING LANDSCAPE.
10. PROPERTY LINE.
11. NEW CONCRETE CURB / DRIVEWAY.
12. NEW RETAINING WALL. REFER TO CIVIL DRAWINGS.
13. NEW SCREEN WALL.
14. DRIVE-THRU QUEUE LINE.
15. EXISTING PYLON / MONUMENT SIGN.
16. CONCRETE PAD FOR UTILITY TRANSFORMER.
17. NEW CANOPY.
18. RETENTION BASIN.
19. STORM DRAIN HEADWALL.
20. EXISTING PARKING STRIP TO REMAIN.
21. 195' TOTAL QUEUE LINE.
22. ORDERING SPEAKER, 100' LONG STACKING DISTANCE BETWEEN PICK-UP WINDOW AND ORDER-PLACINF SPEAKER, WITH AT LEAST 40' LONG STACKING DISTANCE BETWEEN ORDER-PLACING SPEAKER AND ENTRY TO THE DRIVE-THRU LANE. DISTANCE MEASURED AT CENTERLINE OF DRIVE-THRU LANE.

ACCESSIBILITY NOTES

THE CONTRACTOR SHALL BECOME FAMILIAR WITH THE A.D.A. AND LOCAL BARRIER FREE REQUIREMENTS AND SHALL ENSURE THAT THIS FACILITY WILL MEET THE STRICTEST OF THE APPLICABLE REQUIREMENTS. THE FOLLOWING IS A PARTIAL LIST OF SITE RELATED ITEMS WITHIN THE SCOPE OF WORK TO PAY PARTICULAR ATTENTION TO:

- ACCESSIBLE PARKING STALL REQUIREMENTS.
- ACCESSIBILITY FROM PARKING TO BUILDING INTERIOR.

BNP

BAR NAPKIN PRODUCTIONS

2828 N Central Ave, Ste 1300
Phoenix, AZ 85004

602.492.9494

bnp-llc.com

DUNKIN' BRANDS®
[eatdrinkthink]



DUNKIN DONUTS DRIVE THRU ADDITION

PROJECT LOCATION

6606 E. MCKELLIPS RD.
BUILDING 3
MESA, AZ 85205

ISSUE DATE

CITY SUBMITTAL 04.23.18
CITY REVISION 06.05.18

ARCHITECTURAL SITE
PLAN

BN1419

SP-1

© THIS DRAWING IS AN INSTRUMENT OF SERVICE AND THE PROPERTY OF BAR NAPKIN LLC. THIS DRAWING MAY NOT BE REPRODUCED OR UTILIZED IN ANY MANNER WITHOUT THEIR WRITTEN PERMISSION.