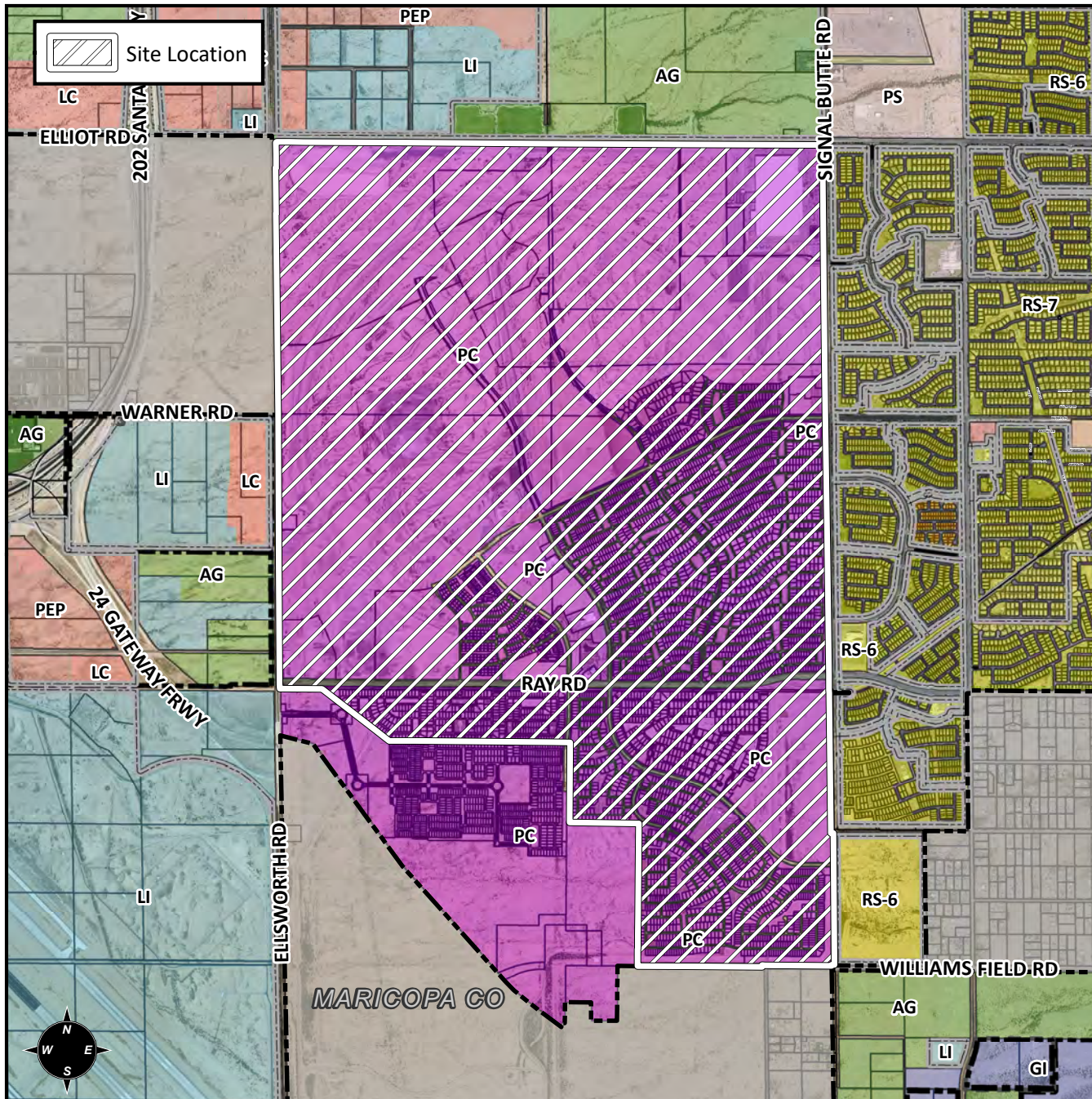


Planning and Zoning Vicinity Map: ZON18-00121



Case Details

CASE:

ZON18-00121

PRE-PLAT : ☐

SITE / ADDRESS:

The 3600 to 5200 blocks of South Ellsworth Road (east side), the 9200 to 10800 blocks of East Elliot Road (south side), and the 3600 to 6000 blocks of the South Signal Butte Road alignment (west side). Located south of Elliot Road between Ellsworth Road and Signal Butte Road (3200± acres) (District 6)

REQUEST:

Major Amendment to the Eastmark Community Plan. This request will make changes that impact Development Units ("DUs") 1, 2, 3, and 4 related to Land Use Groups, the Land Use Budget, refinements to the DU character descriptions, and corresponding modifications to various sections of the Community Plan.

