

SITE PLAN DATA

PARCEL NUMBER:	134-19-007F
EXISTING ZONING:	LC(LIMITED COMMERCIAL)
USE	RETAIL (TIRE STORE)
EXISTING BUILDING AREA:	9,913 S.F.
NEW ADDITION BUILDING AREA:	502 S.F.
PROPOSED BUILDING AREA:	10,415 S.F.
EXISTING PARKING:	34 SPACES (1 ACCESSIBLE SPACES)

PARKING CALCULATION

PARKING REQUIRED:		
RETAIL (TIRE STORE): (1/375 S.F.)= 9913/375 =26.4	= 27 SPACES	
TOTAL PARKING PROVIDED:	= 18 SPACES	
TOTAL ACCESSIBLE SPACES PROVIDED	= 1 SPACES	
NO. OF BAYS	= 8 BAYS	
TOTAL PARKING (INCLUDING BAYS)	= 26 SPACES	

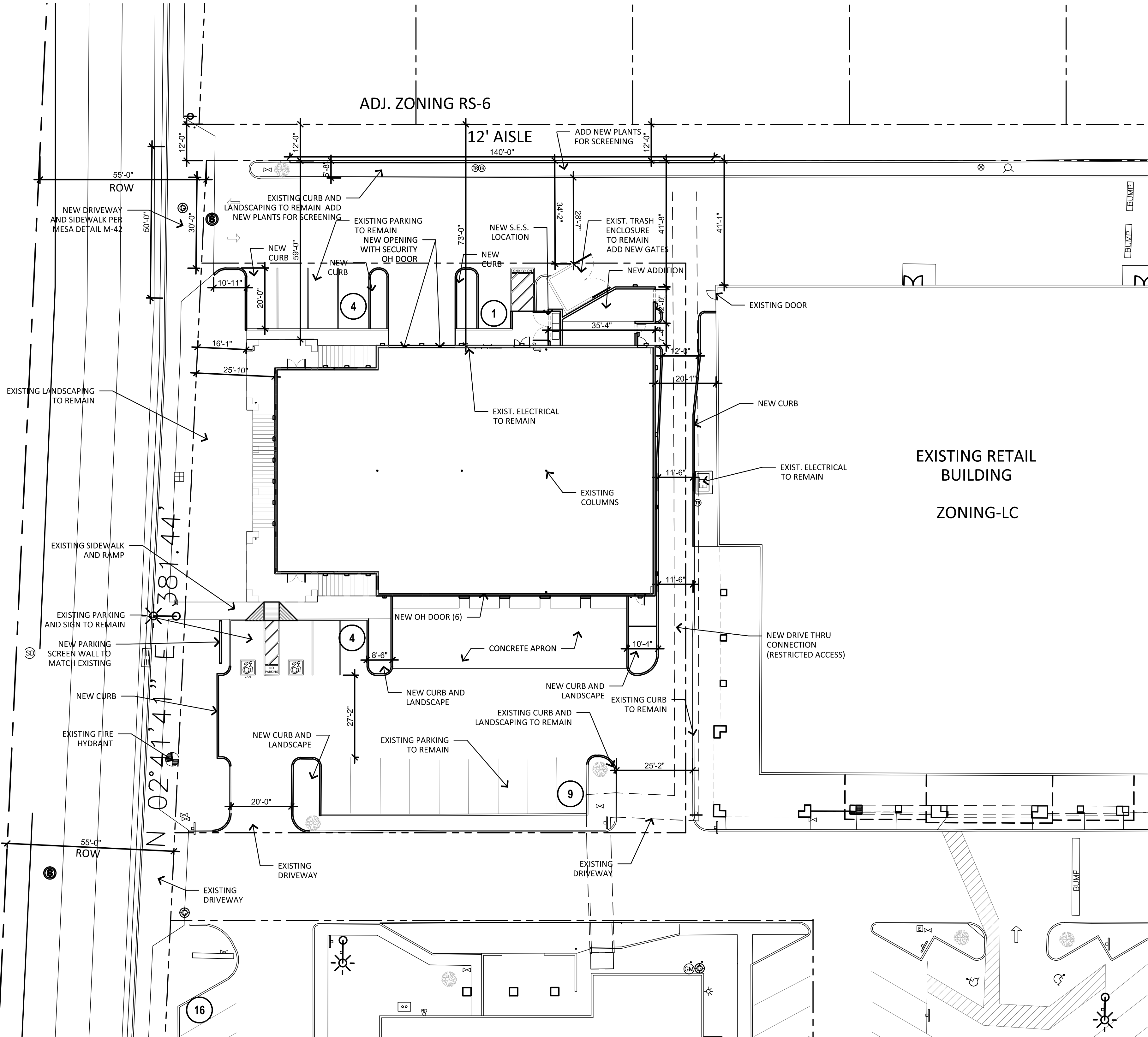


LOCATION MAP

SCALE:

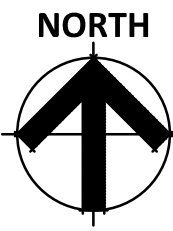


ALMA SCHOOL ROAD



SITE PLAN

SCALE: 1" = 20'-0"



1150 W SOUTHERN AVENUE
N.E.C. OF ALMA SCHOOL ROAD AND SOUTHERN AVENUE
MESA, ARIZONA
2018 JULY 11

HINKSON COMPANY, LLC

© 2017 RKAA
ARCHITECTS, INC. ALL
RIGHTS RESERVED.
THIS DRAWING IS AN
INSTRUMENT OF
SERVICE. IT IS THE
PROPERTY OF RKAA
ARCHITECTS, INC. AND
MAY NOT BE
DUPLICATED, USED OR
DISCLOSED WITHOUT
WRITTEN PERMISSION
OF THE ARCHITECT.

SP1

RKAA# 18028.00



THIS SITE PLAN HAS BEEN PREPARED WITHOUT THE AID OF A SURVEY. ALL PROPERTY BOUNDARIES ARE ROUGH APPROXIMATIONS. THIS DRAWING IS TO BE USED FOR CONCEPTUAL PURPOSES ONLY AND IT IS NOT TO BE THE BASIS FOR ANY LEGALLY BINDING DOCUMENTATION.