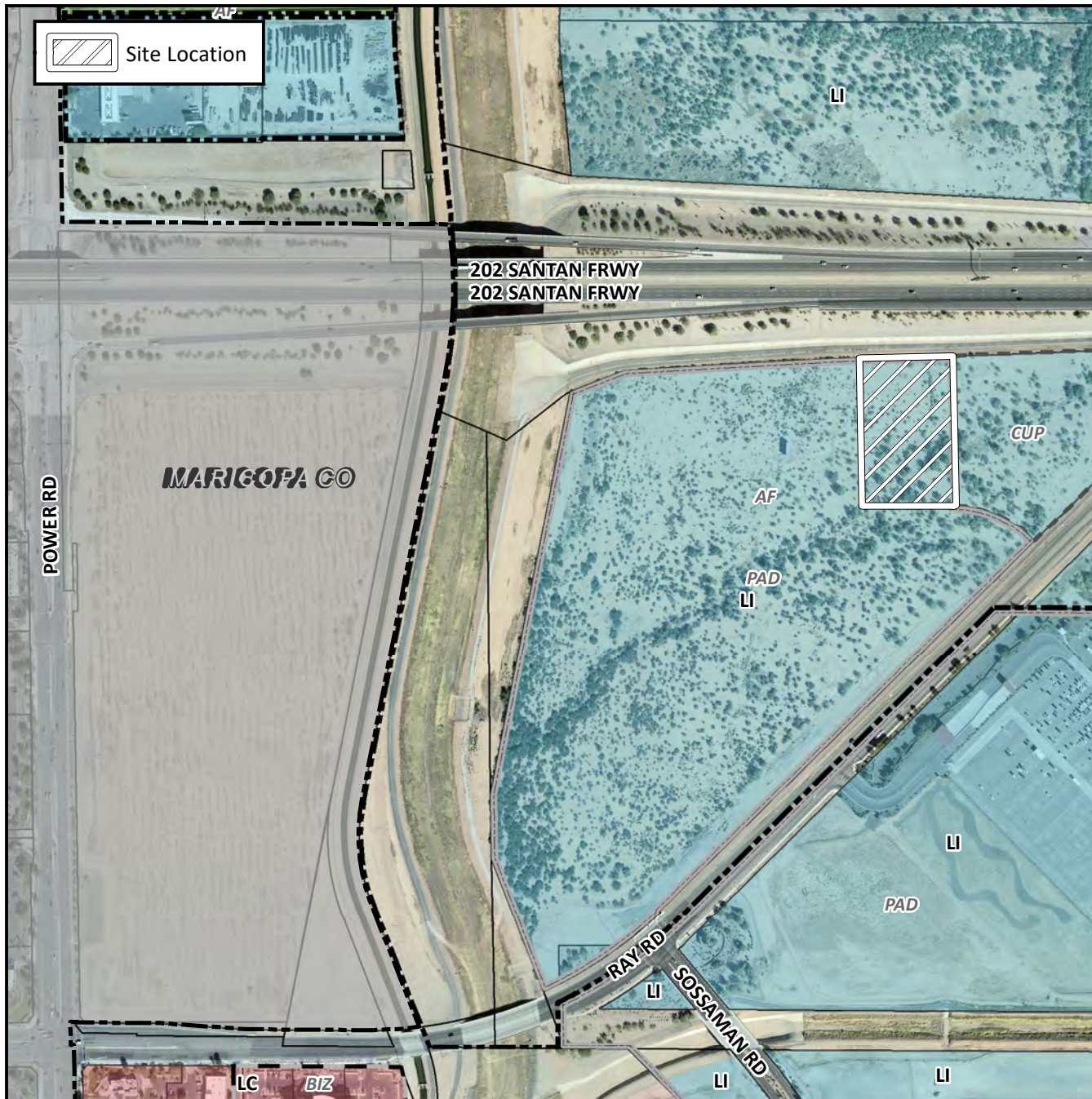


Planning and Zoning Vicinity Map: ZON18-00344



Case Details

CASE:

ZON18-00344

PRE-PLAT : ☐

SITE / ADDRESS:

District 6. The 7100 to 7300 blocks of East Ray Road (north side). Located east of Power Road on the north side of Ray Road. (3.2± acres)

REQUEST:

Site Plan Review. This request will allow for the development of an indoor commercial recreation facility with retail uses.

