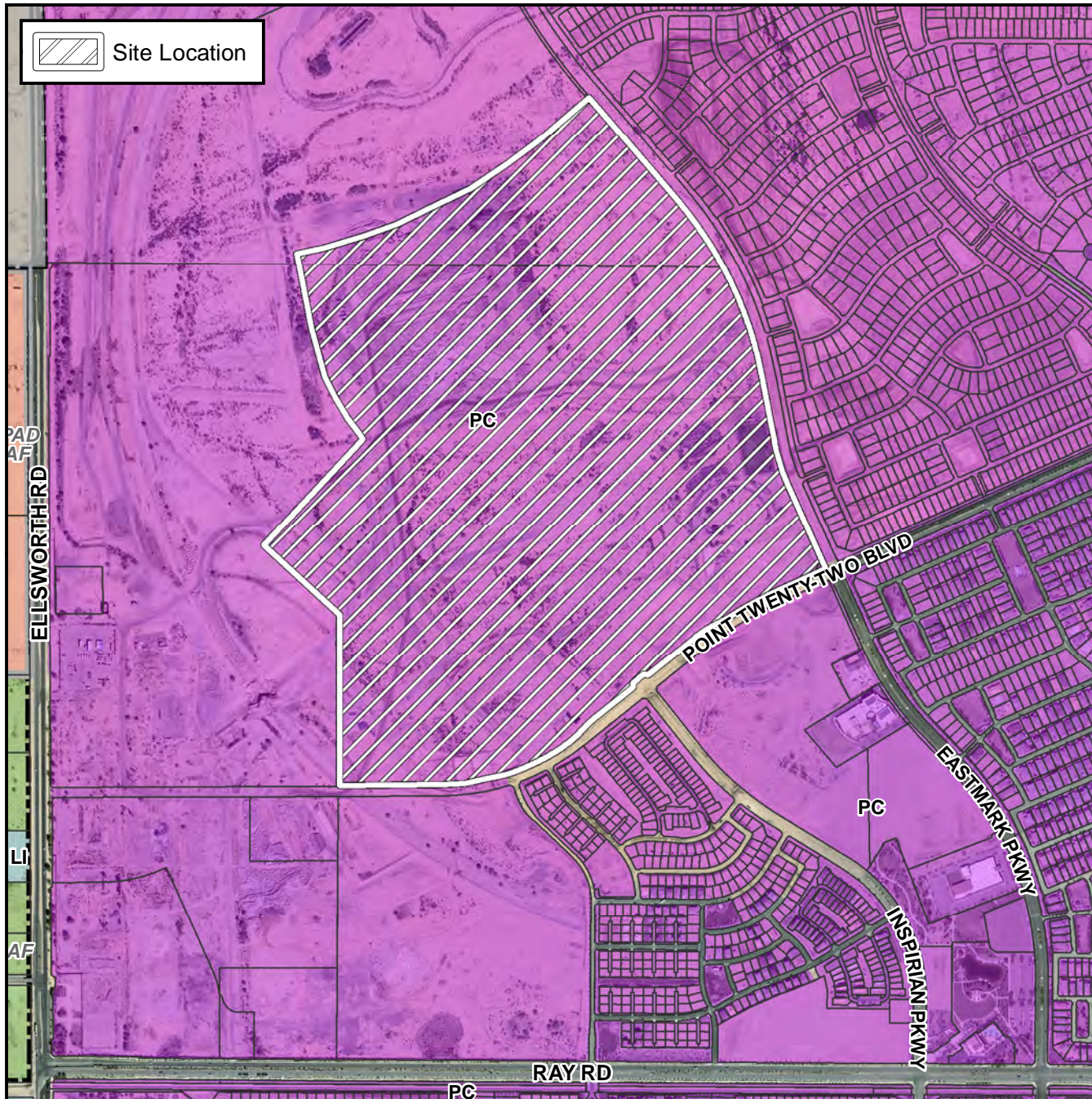


Preliminary Plat Vicinity Map



Case Details

Project:

Eastmark DU3/4 North Phase 1 & 2

Site / Address:

District 6. The 9500 to 9900 blocks of East Point Twenty-Two (north side), the 4500 to 4800 blocks of South Inspirian Parkway (west side), the 4300 to 4800 blocks of South Inspirian Parkway (east side), the 4200 to 4700 blocks of South Eastmark Parkway (west side) and the 9400 to 9700 blocks of the future East Warner Road (south side). Located on the north of Ray Road and East of Ellsworth Road. (184± acres).

