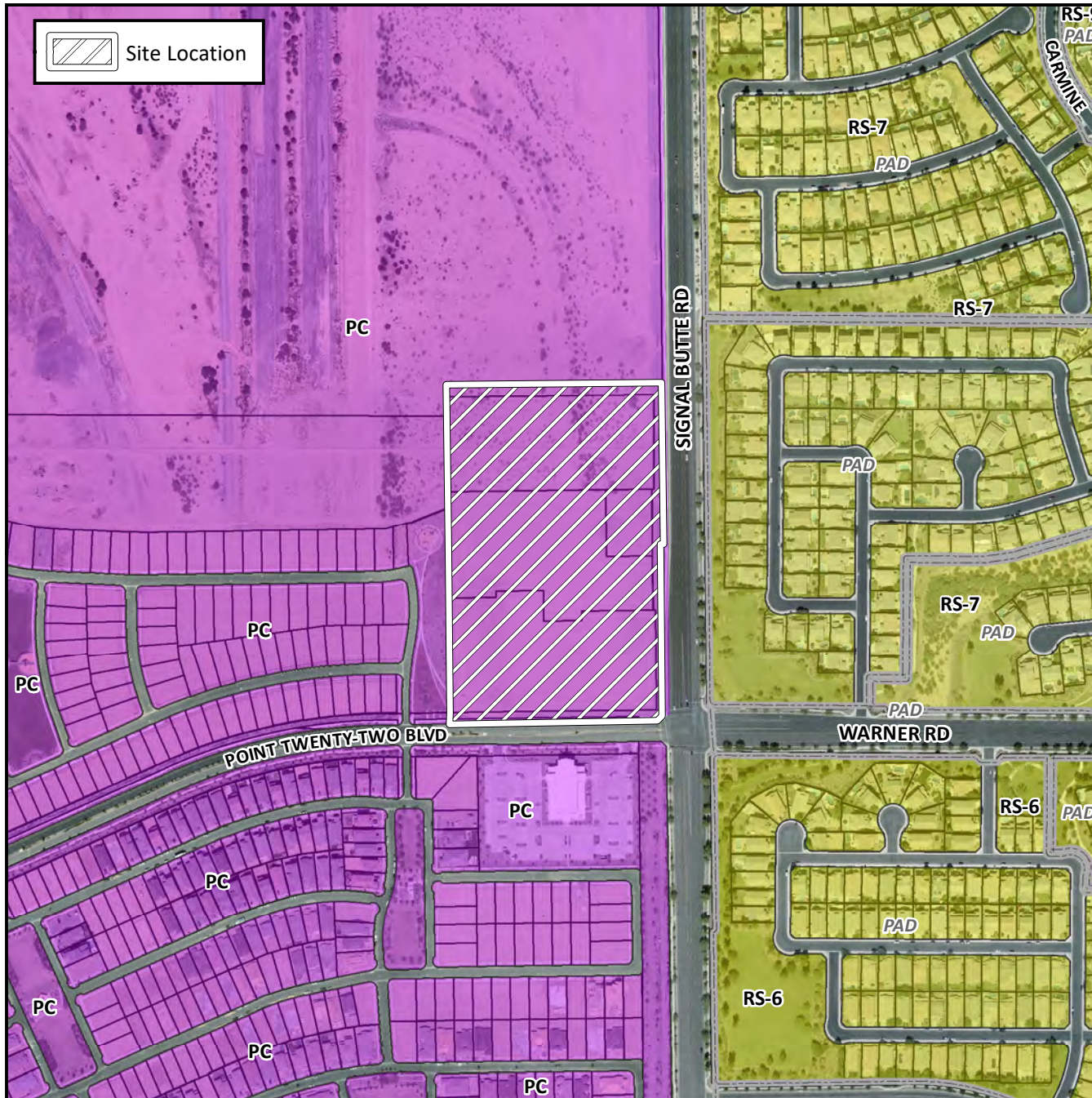


Planning and Zoning Vicinity Map: ZON18-00355



Case Details

CASE:

ZON18-00355

PRE-PLAT : ☐

SITE / ADDRESS:

District 6. The 4200 to 4400 blocks of South Signal Butte Road (west side) and 10600 to 10800 blocks of East Point Twenty-Two Boulevard (north side). Located at the northwest corner of Signal Butte Road and Point Twenty-Two Boulevard. (15± acres)

REQUEST:

Site Plan Review. This request will allow for the development of a retail/commercial center.

