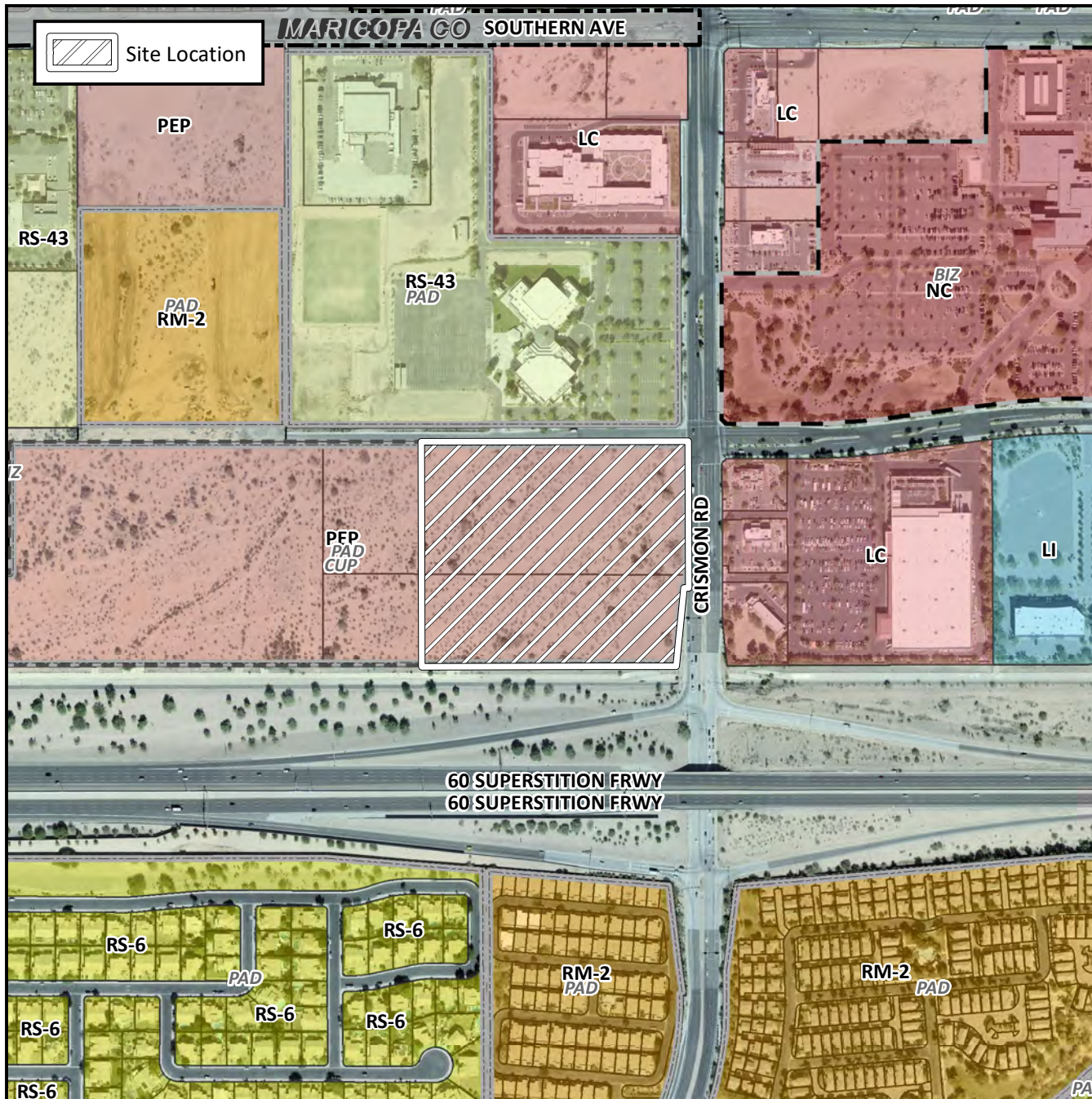


# Planning and Zoning Vicinity Map: ZON18-00149



## Case Details

**CASE:**

ZON18-00149

**PRE-PLAT :** ☐

### SITE / ADDRESS:

District 6. The 9800 through 9900 blocks of East Hampton Avenue (south side) and the 1400 block of South Crismon Road (west side). Located at the northwest corner of US-60 and Crismon Road. (15± acres)

### REQUEST:

Rezoning from PEP-PAD-CUP to PEP-PAD. This request will allow for an office and commercial development.

