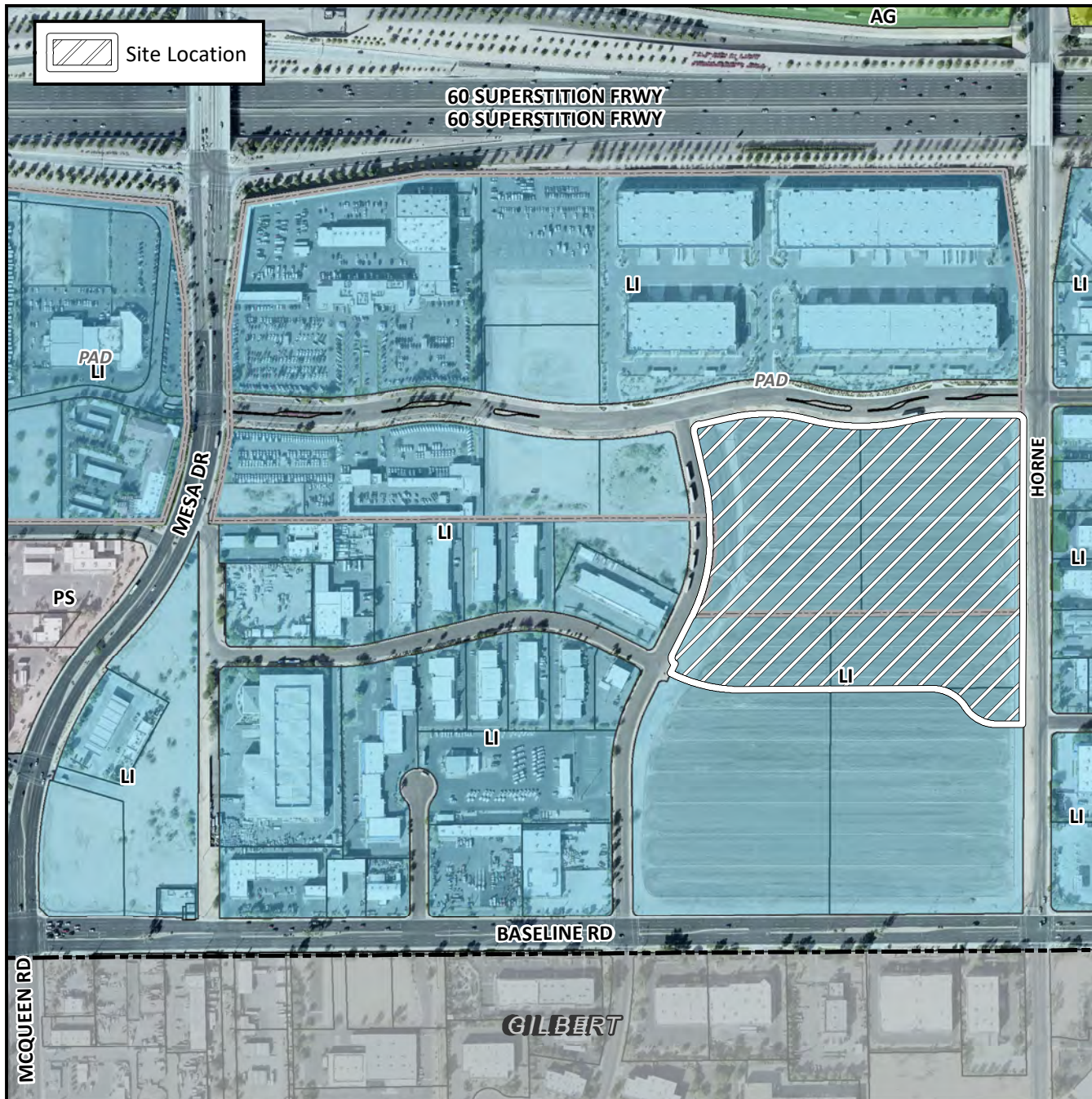


# Planning and Zoning Vicinity Map: ZON18-00310



## Case Details

**CASE:**

ZON18-00310

**PRE-PLAT :** ☒

### SITE / ADDRESS:

District 3. The 1700 to 1800 blocks of South Horne (west side), the 1700 to 1800 blocks of South Hobson (east side) and the 600 to 700 blocks of Auto Center Drive (south side). Located north of Baseline Road and east of Mesa Drive. (22± acres)

### REQUEST:

Rezoning from LI and LI-PAD to LI-PAD; and Site Plan Review. This request will allow for the development of an industrial park.

