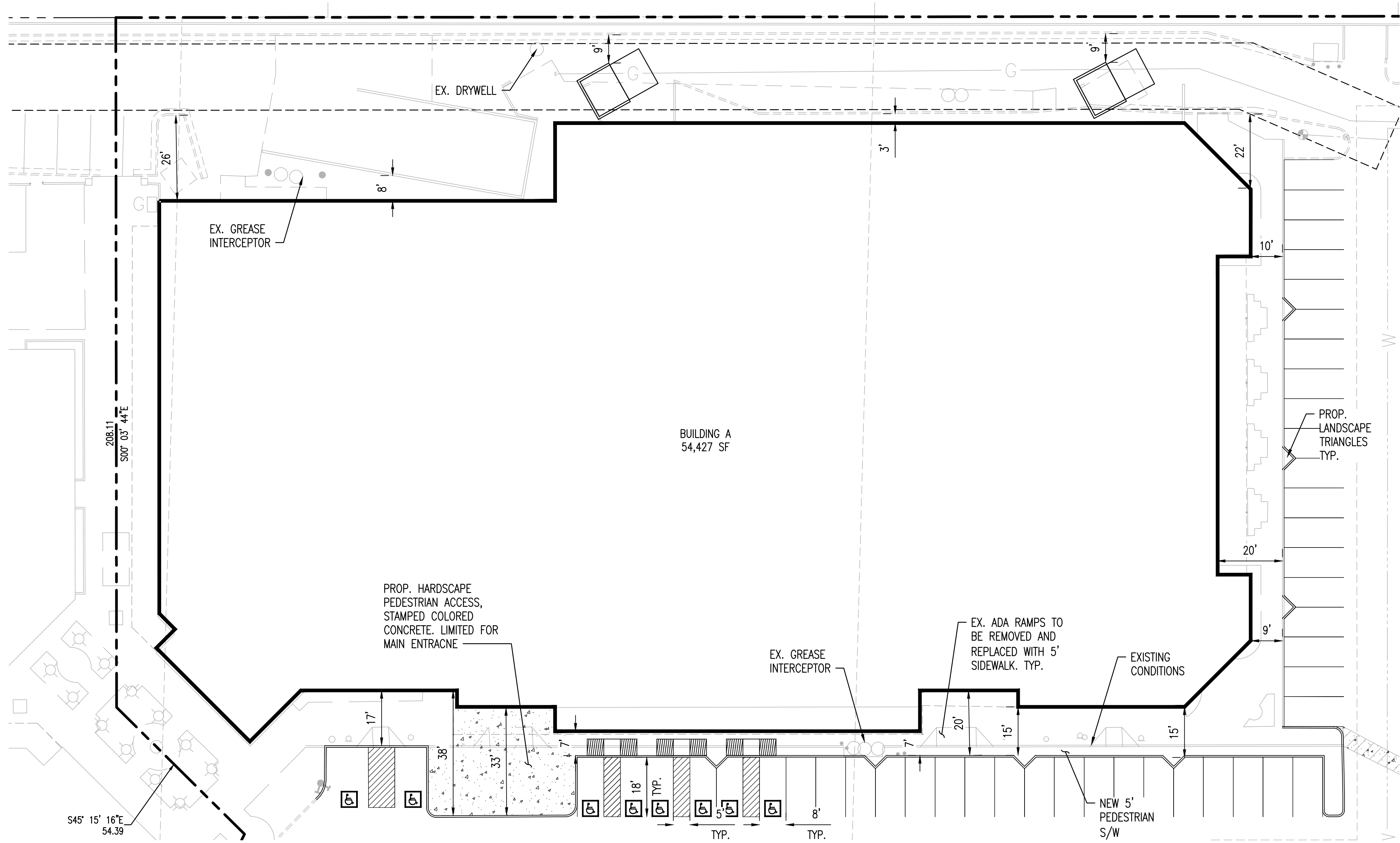
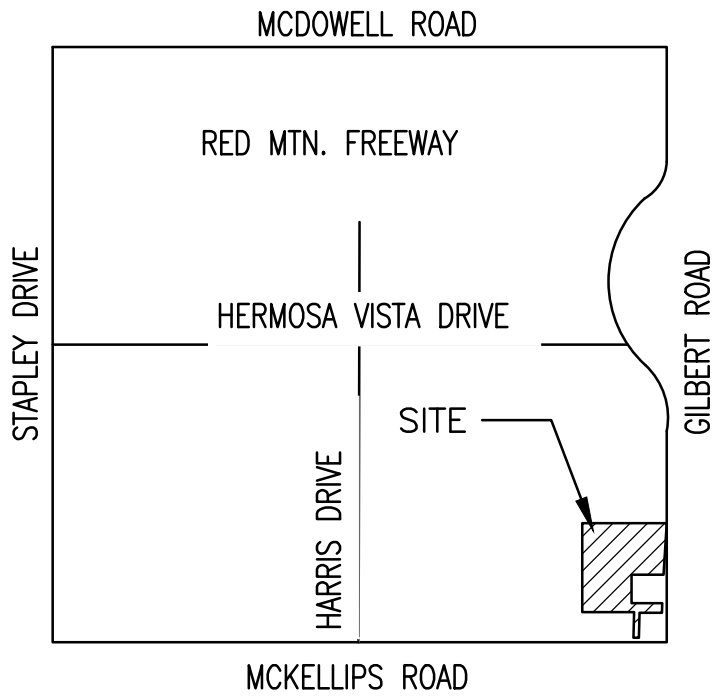
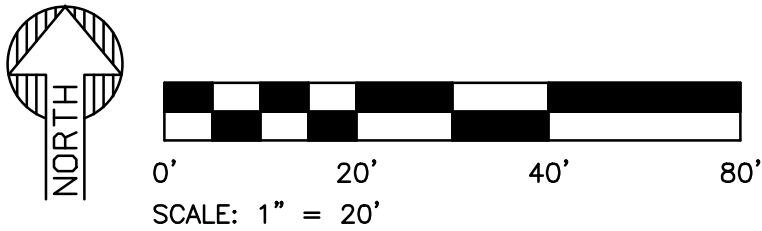


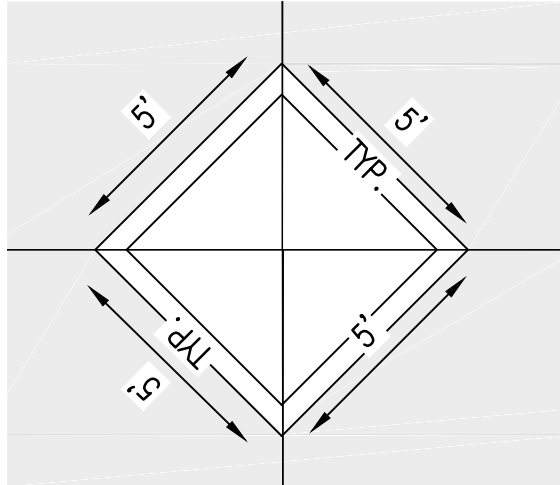
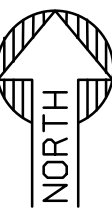
EOS GYM
ORANGE TREE PLAZA
ENLARGE DETAILS
NWC GILBERT & MCKELLIPS



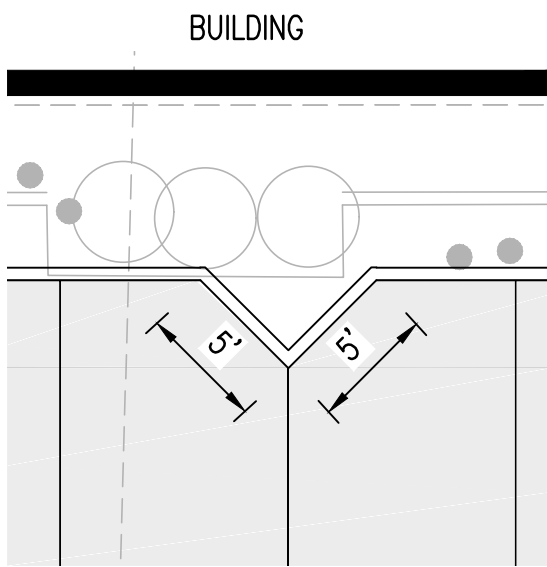
ENLARGE DETAIL A: BUILDING FOUNDATION



VICINITY MAP:
SCALE: NTS

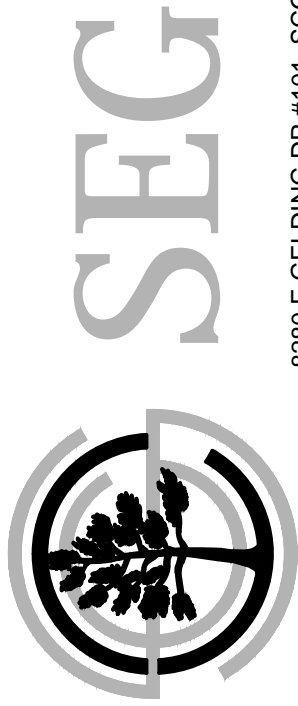


ENLARGE DETAIL B: PARKING DIAMONDS
NTS



ENLARGE DETAIL C: PARKING TRIANGLES
NTS

PRELIMINARY
NOT FOR
CONSTRUCTION



8280 E GELDING DR #101, SCOTTSDALE, ARIZONA 85260
WWW.AZSEG.COM TEL. 480.588.7226



PROJECT
EOS GYM

LOCATION
NWC GILBERT &
MCKELLIPS

DRAWN: TAPIA
DESIGNED: TAPIA
CHECKED: COUNSELL
PROJ. MGR.: FAKIH

DATE: 06-13-18

ISSUED FOR:
SITE PLAN APPROVAL

REVISION NO.:	DATE:
1	
2	
3	
4	

JOB NO.: 171101

SHEET TITLE:

ENLARGE DETAILS

SHEET NO.:
C2.10



NOTE TO CONTRACTOR:
THIS SET OF DRAWINGS AND DOCUMENTS IS INTENDED AS A SET OF GUIDELINES FOR THE PROJECT AND ARE INTENDED TO BE USED IN CONJUNCTION WITH A SET OF CONSTRUCTION SPECIFICATIONS TO BE SUPPLIED BY OWNER. THEY MUST BE READ TO INCORPORATE ALL APPLICABLE FEDERAL, STATE, AND LOCAL CODES AND CONSTRUCTION SPECIFICATIONS. THE SET ASSUMES THAT THERE ARE NO UNUSUAL SOIL CONDITIONS OR UNUSUAL LOADS. THE FAILURE OF THIS CONSTRUCTION MAY REQUIRE SOFTENING AND CHANGES TO THESE DOCUMENTS. IT IS THE RESPONSIBILITY OF THE CONTRACTOR TO COMPLY WITH ALL APPLICABLE CODES AND TO INFORM THE OWNER/ARCHITECTS OF ANY QUESTIONS OR CLARIFICATIONS WHICH ARE DECIDED. CONTRACTORS SHALL ALSO VISIT THE SITE BEFORE BEGINNING. CONTRACTORS ARE REQUIRED TO KNOW ALL OBSERVABLE CONDITIONS AND APPLICABLE CODES.