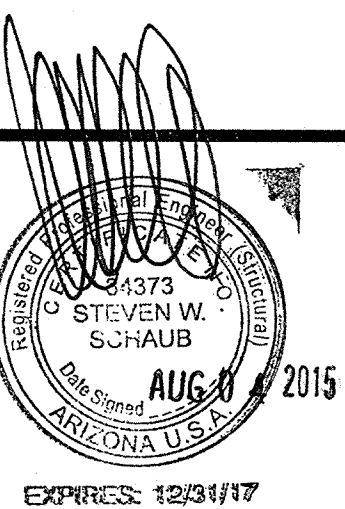


- |                  |                                    |             |  |
|------------------|------------------------------------|-------------|--|
| JOB NUMBER       |                                    | 1093-10     |  |
| ROOF DECK        | 26 GA. "R" PANEL                   | Fy = 80 KSI |  |
| PURLIN           | 12" x 2 1/2" x 12 GA. UNSTIFF. CEE | Fy = 55 KSI |  |
| BEAM             | W12 x 14                           | Fy = 48 KSI |  |
| COLUMN           | 6" x 6" x 3/8" TUBE STEEL          | Fy = 46 KSI |  |
| GIRT             | 6" x 4" x 12 GA.                   |             |  |
| FOUNDATION TYPE: |                                    |             |  |
| WIDTH & LENGTH   |                                    | DEPTH       |  |
| CONC.SPREAD FTG. | 6'-9" SQ.                          | 2'-0"       |  |

**747 E. SOUTHERN AVE.  
MESA, AZ 85204**



21

201

30

**சா. ச.**

TC

11

vis

142

--	--

15

3/4/

101

4

100

2

cc

2

100

de

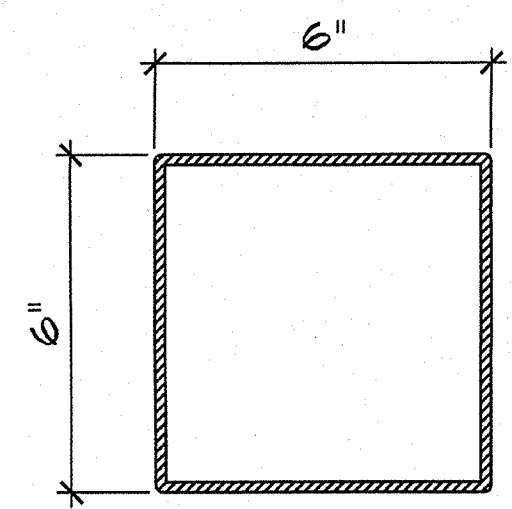
\_\_\_\_\_

1

## LESSON

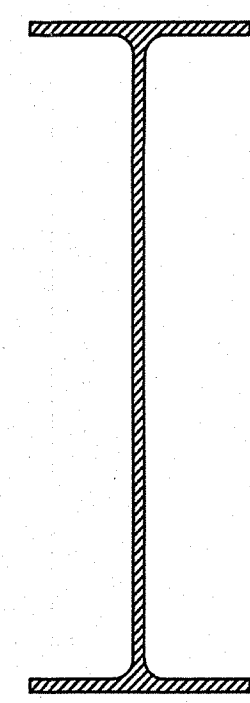
15

\_\_\_\_\_



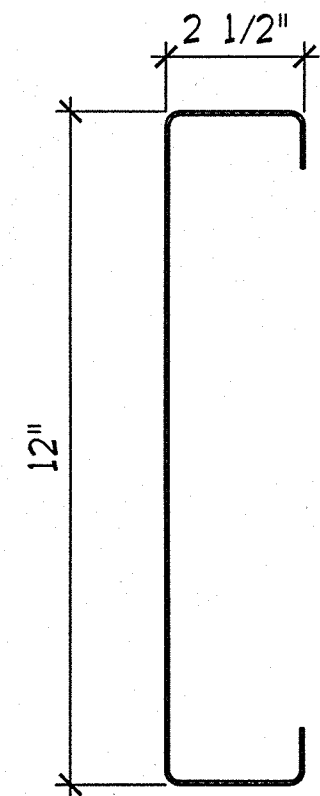
6" X 6" X 3/8" T.S.  
 $I_x = 41.6 \text{ in.}^4$   $S_x = 13.9 \text{ in.}^3$   
 $F_y = 45 \text{ ksi.}$

COLUMN



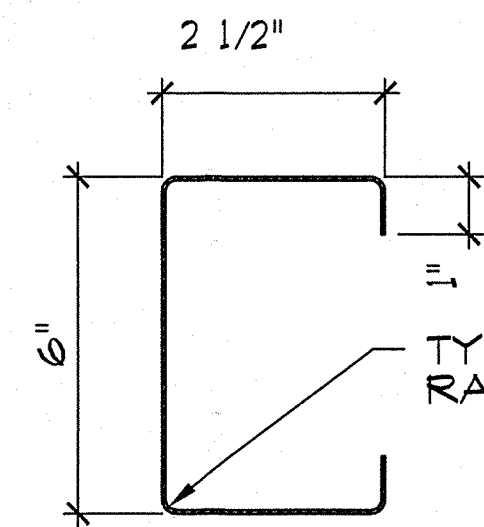
W 12x14  
 $I_x = 88.6 \text{ in.}^4$   $S_x = 14.9 \text{ in.}^3$   
 $F_y = 36 \text{ ksi.}$

RAFTER



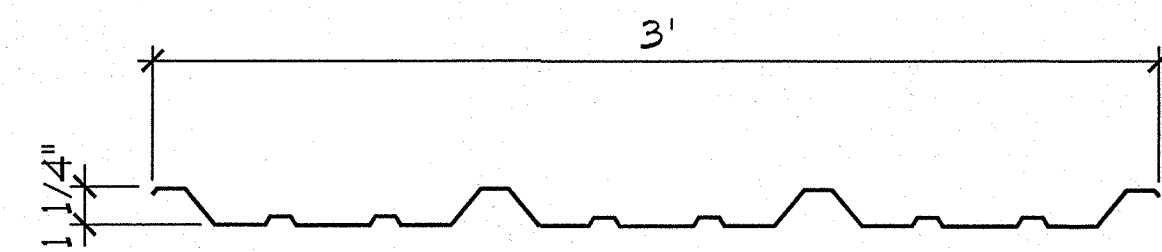
12" X 2 1/2" X 12 GAGE CEE  
 $I_x = 36.773 \text{ in.}^4$   $S_x = 6.1289 \text{ in.}^3$   
 $F_y = 55 \text{ ksi.}$

PURLIN



6" X 2 1/2" X 14 GAGE CEE  
 $I_x = 9.6460 \text{ in.}^4$   $S_x = 3.2153 \text{ in.}^3$   
 $F_y = 55 \text{ ksi.}$

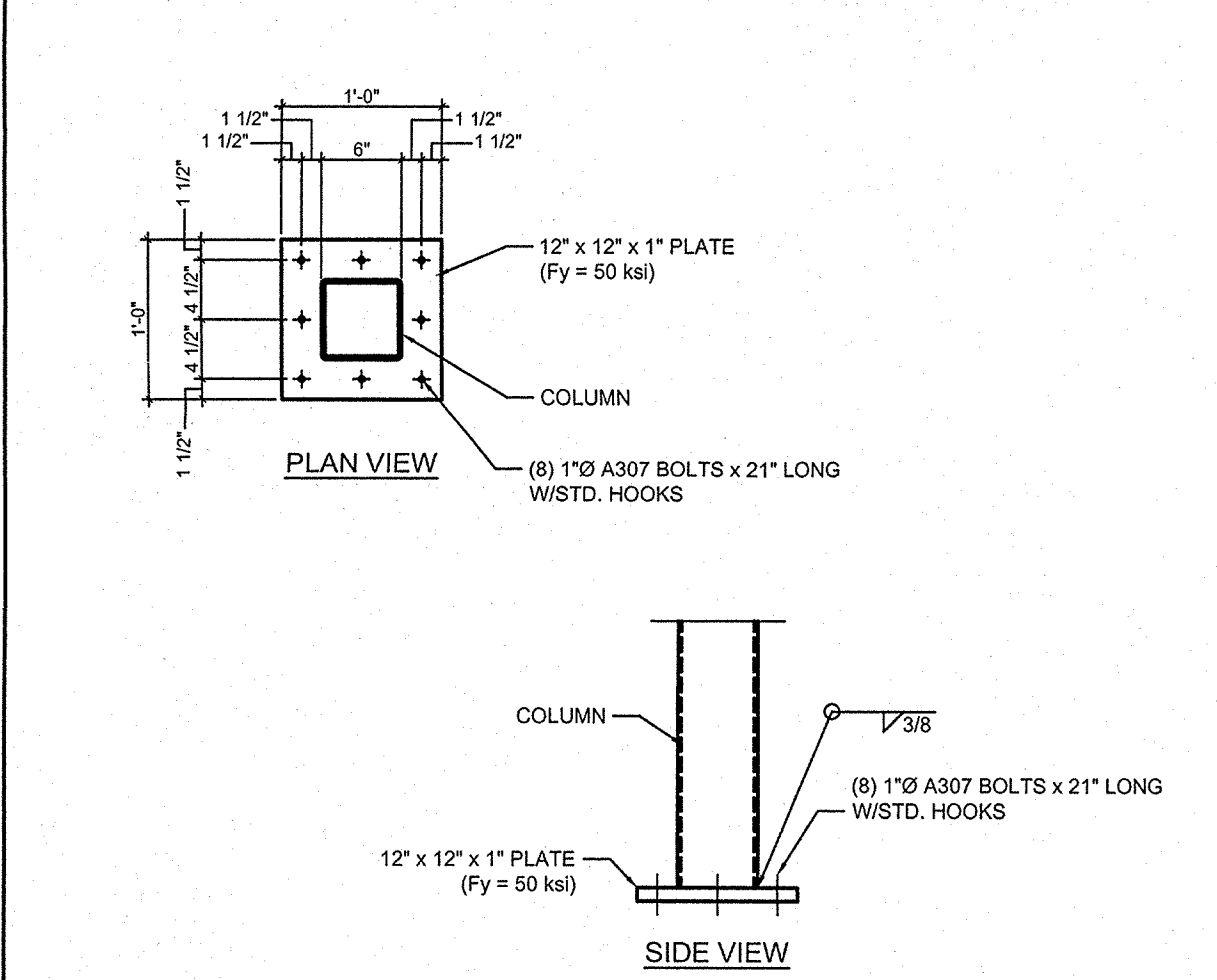
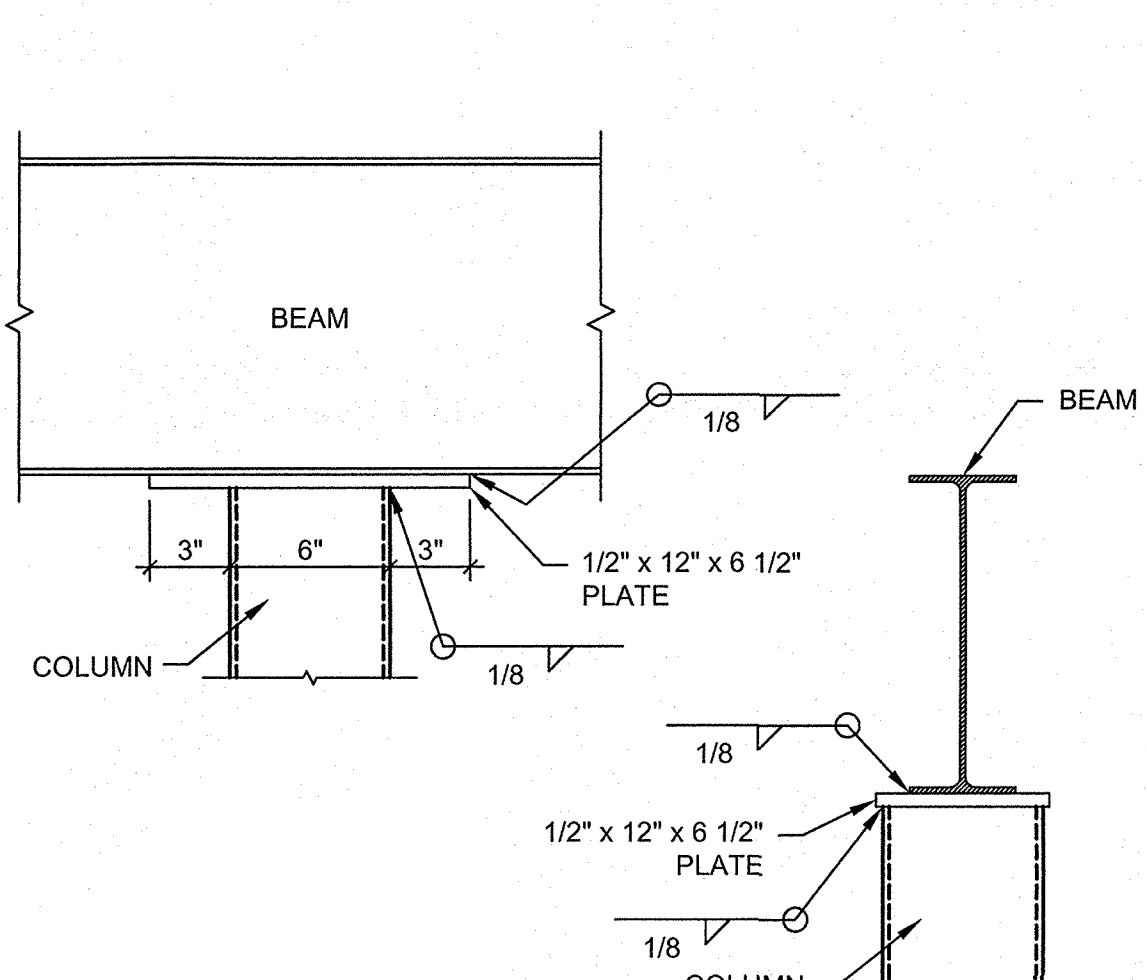
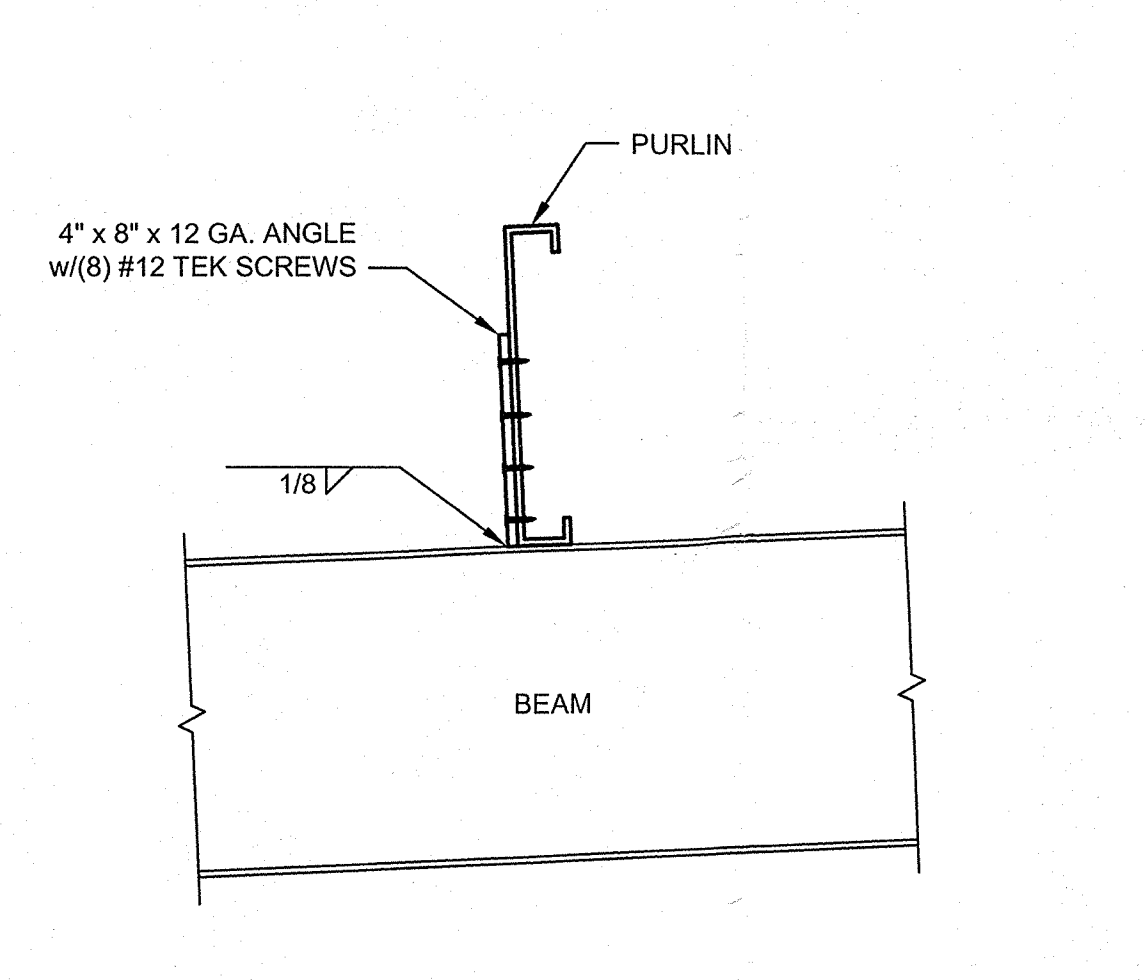
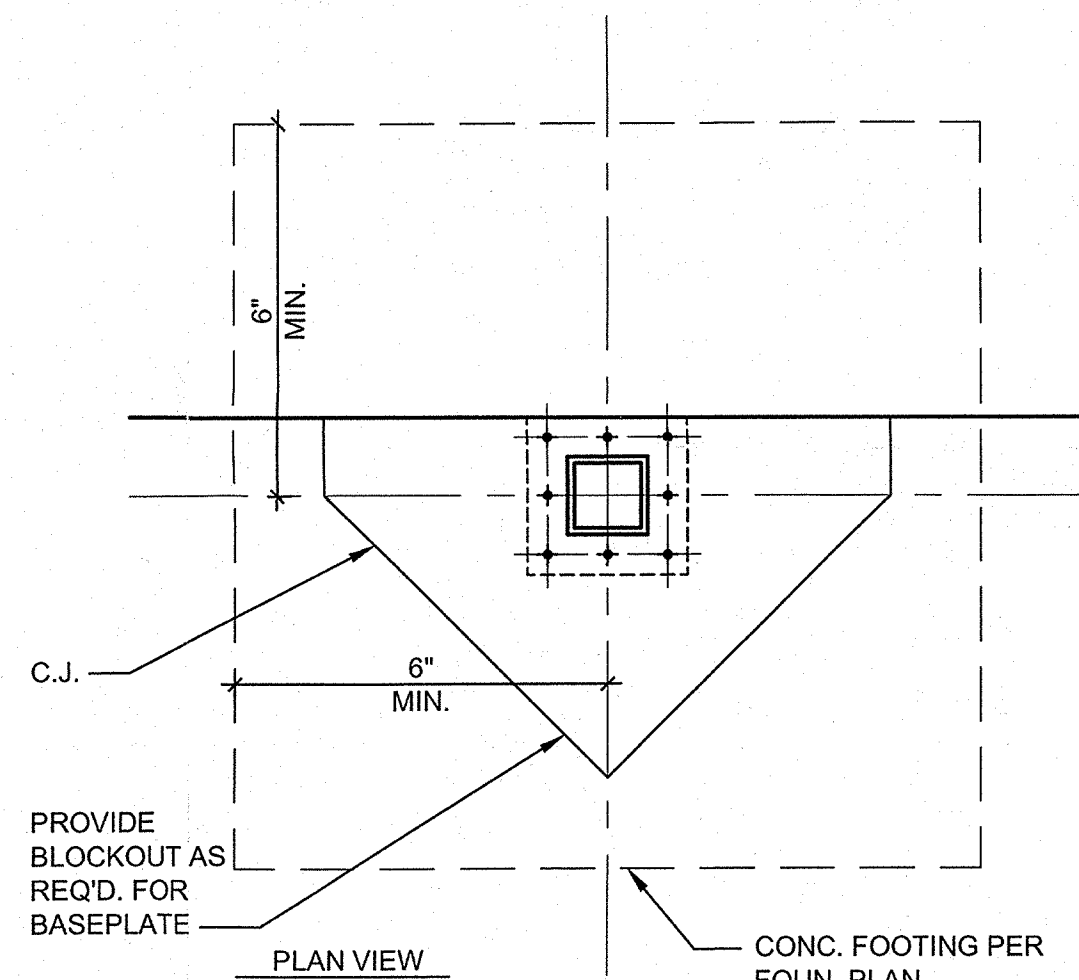
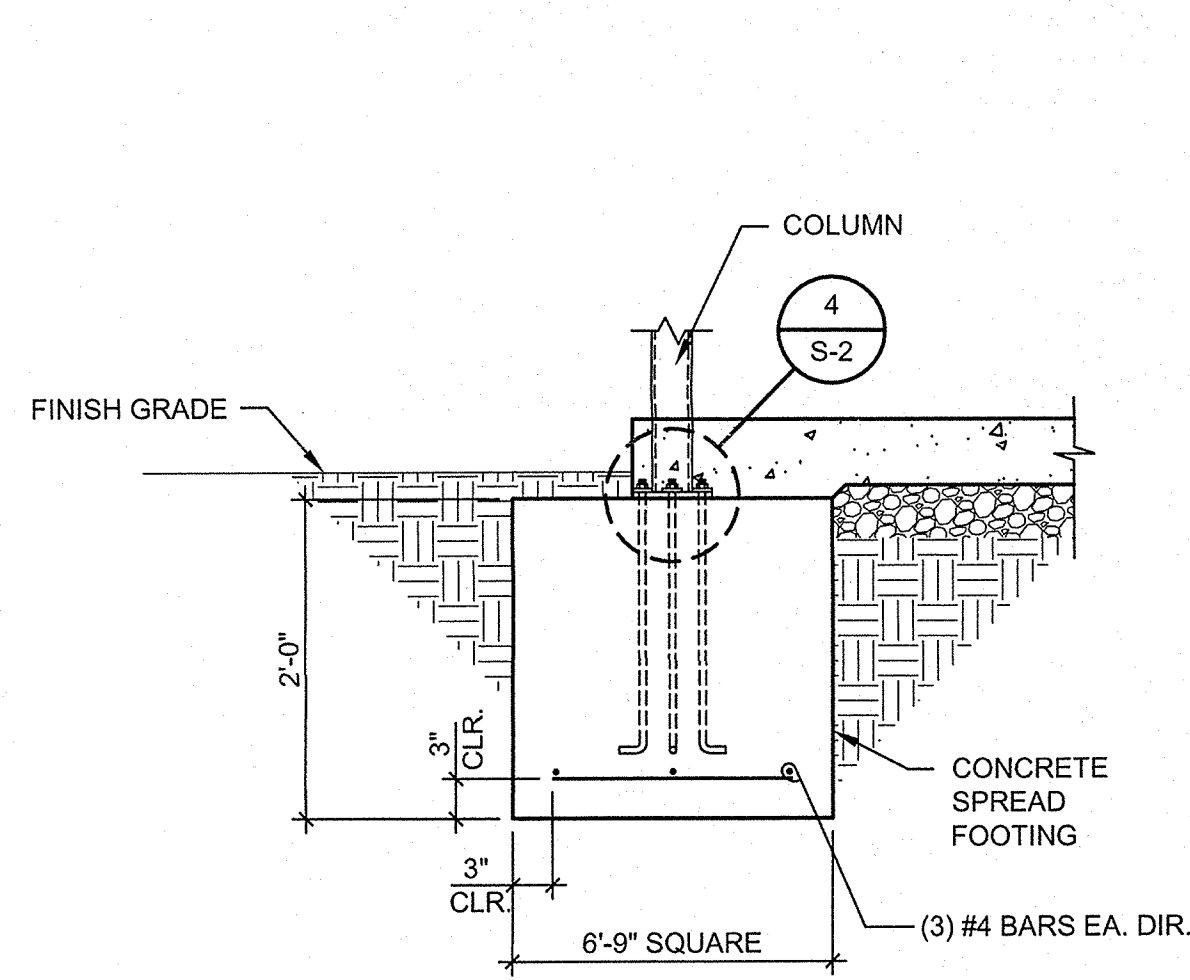
GIRT



26 GA. "R" PANEL  
 $I_x = .039 \text{ in.}^4/\text{ft.}$   
 $S_x(t) = .039 \text{ in.}^3/\text{ft.}$   $S_x(b) = .044 \text{ in.}^3/\text{ft.}$   
 $F_y = 80 \text{ ksi.}$

ROOF DECK

JOB NUMBER		
1093-10		
ROOF DECK	26 GA. "R" PANEL	$F_y = 80 \text{ KSI}$
PURLIN	12" x 2 1/2" x 12 GA. UNSTIFF. CEE	$F_y = 55 \text{ KSI}$
BEAM	W12 x 14	$F_y = 46 \text{ KSI}$
COLUMN	6" x 6" x 3/8" TUBE STEEL	$F_y = 46 \text{ KSI}$
GIRT	6" x 4" x 12 GA.	
FOUNDATION TYPE:		
WIDTH & LENGTH		DEPTH
CONC.SPREAD FTG.		6'-9" SQ. 2'-0"



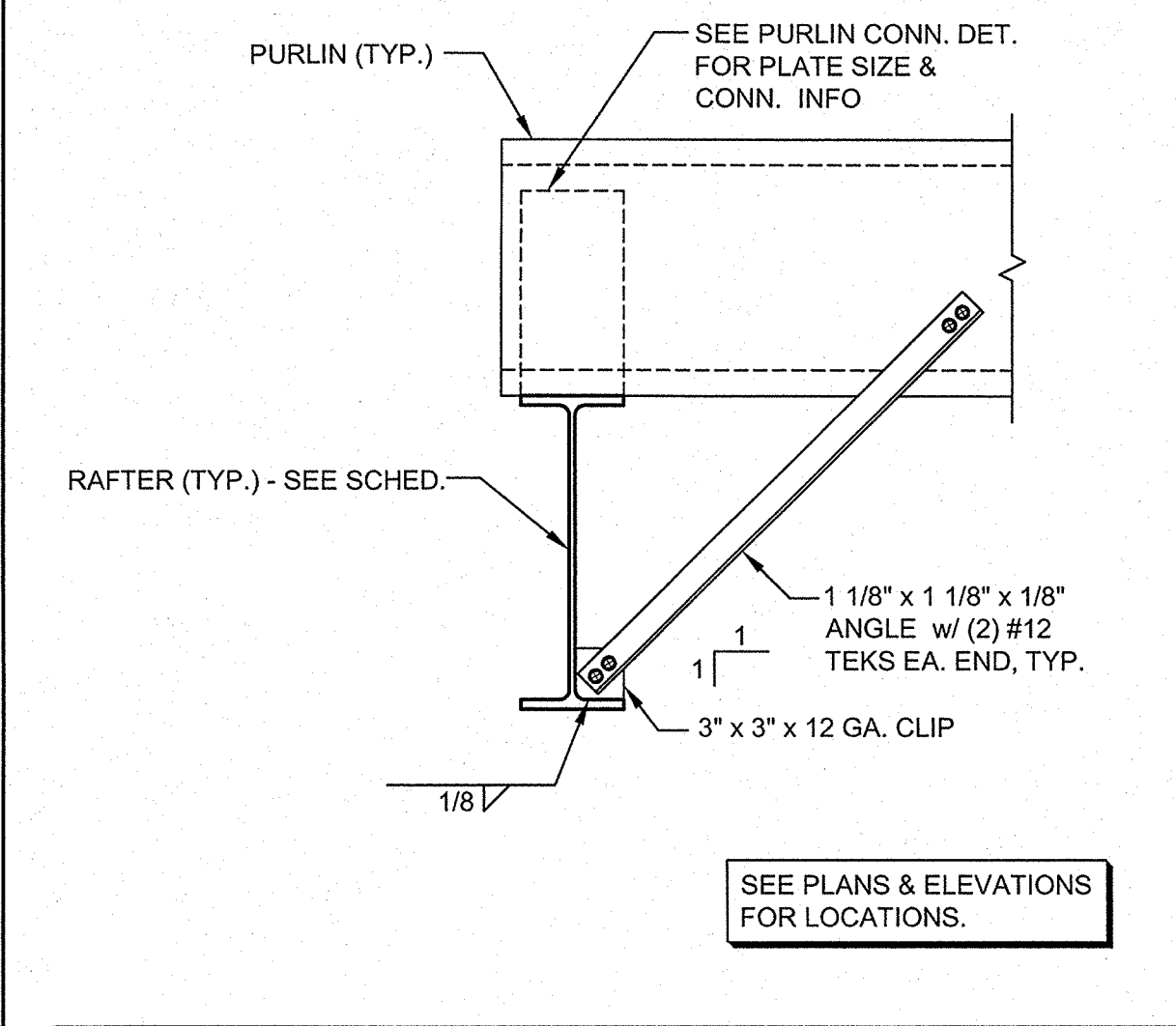
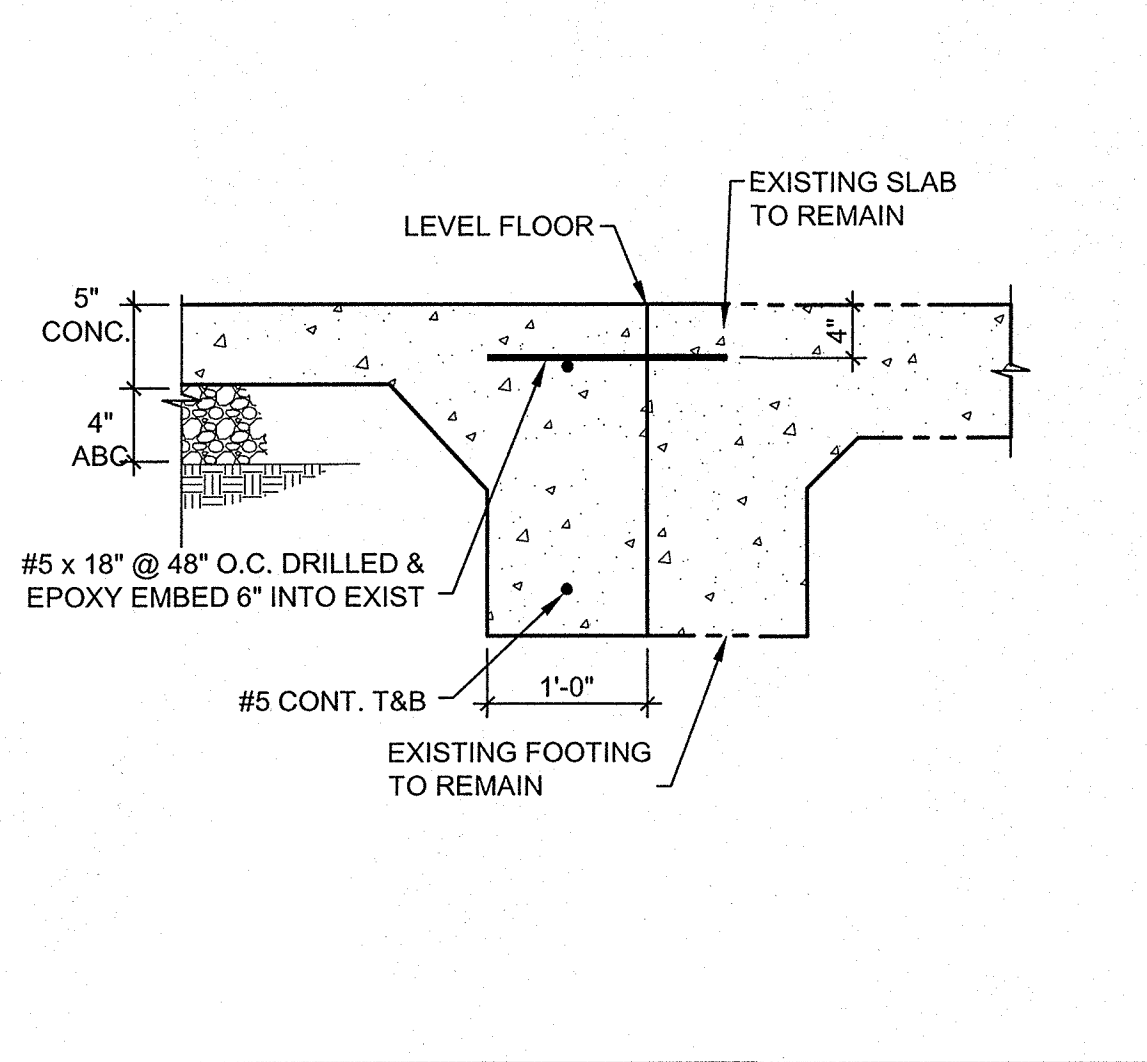
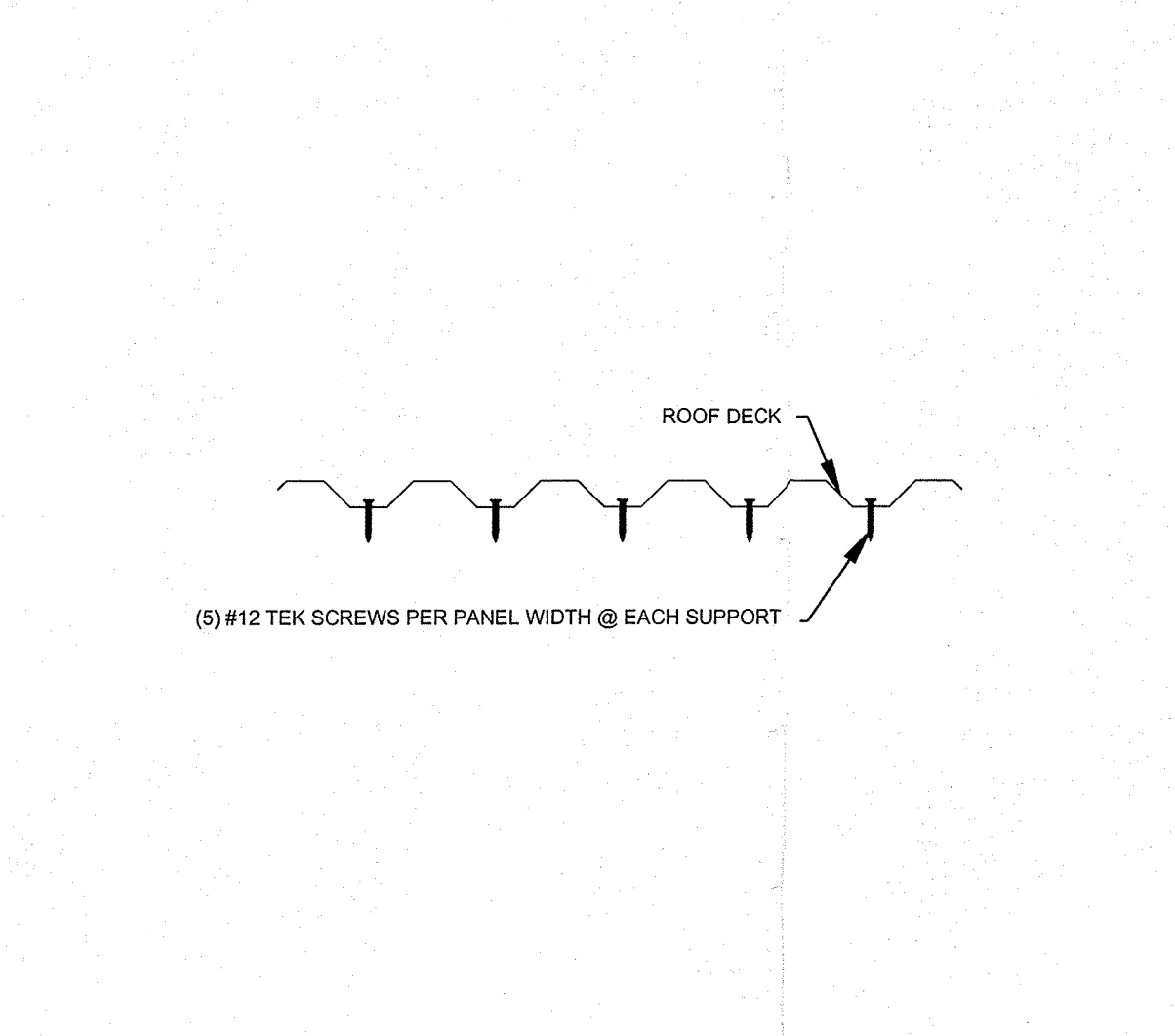
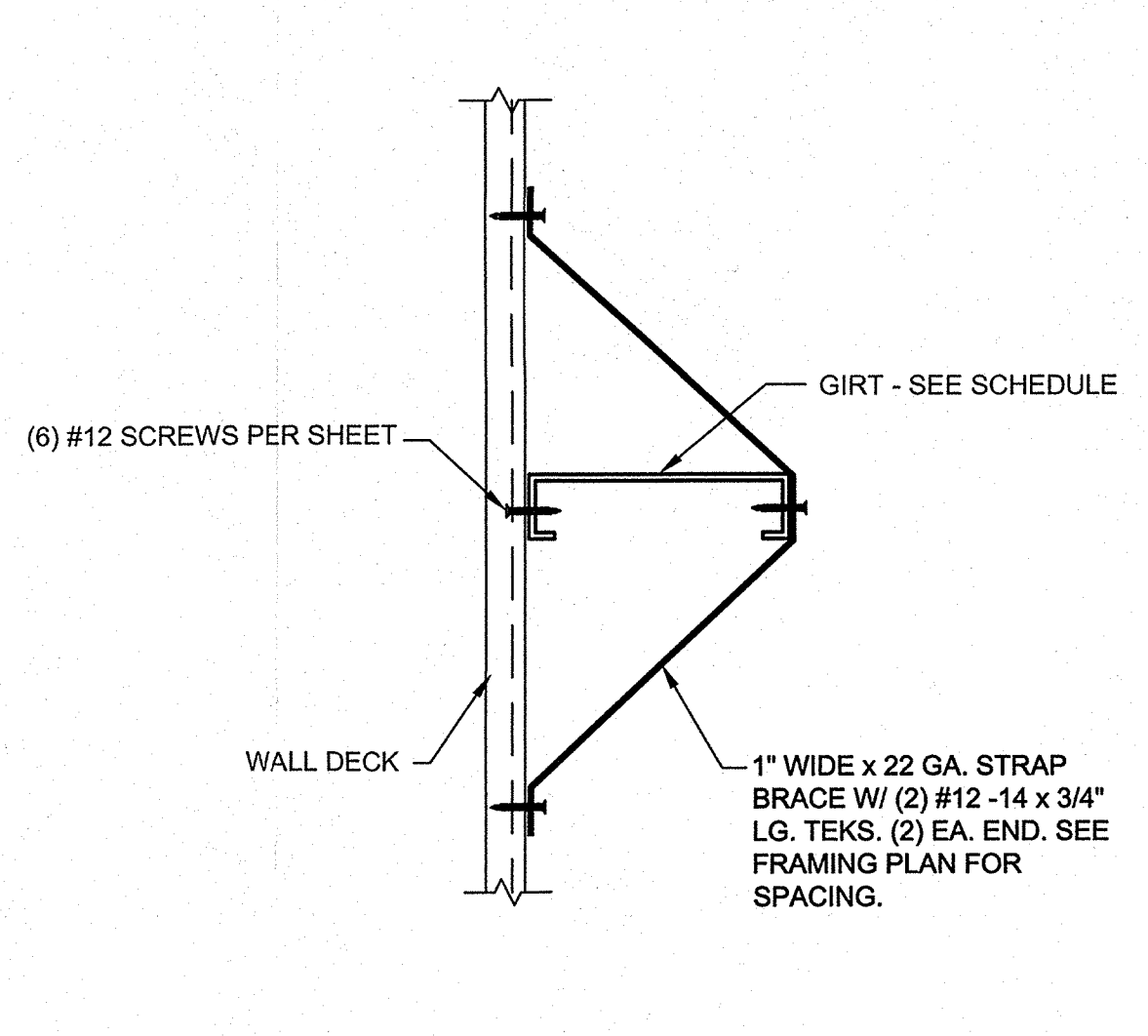
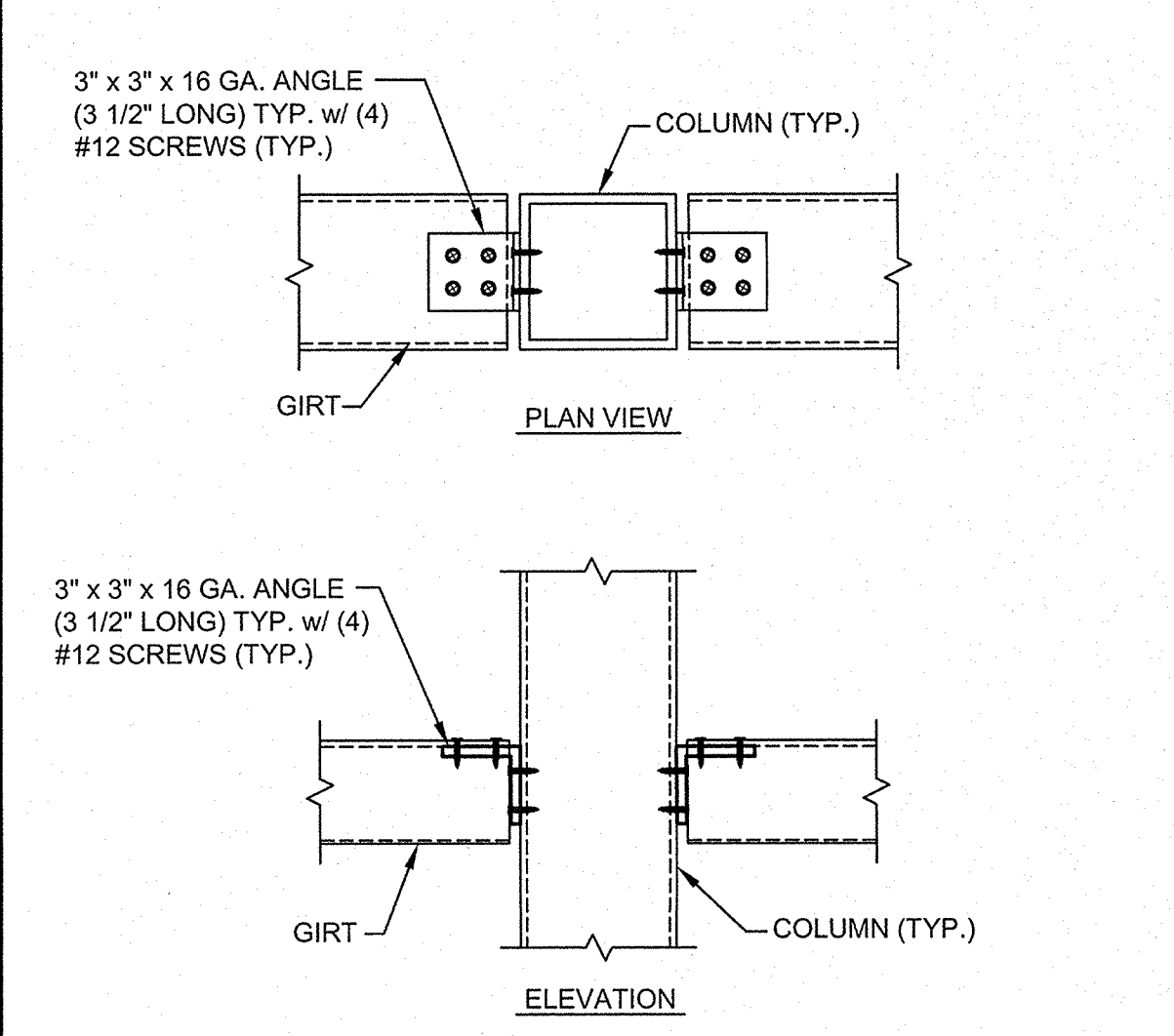
1 STEEL COLUMN FOOTING  
QHSFOD002

3/4" = 1'-0"

2 PURLIN TO RAFTER CONN.  
N.T.S.

3 BEAM TO COLUMN CONN.  
N.T.S.

4 BASE PLATE DETAIL  
N.T.S.



5 GIRT TO COLUMN CONN. DET.  
N.T.S.

6 GIRT BRACING DETAIL  
N.T.S.

7 ROOF/WALL DECK CONN.  
N.T.S.

8 SLAB @ EXIST. SLAB  
3/4" = 1'-0"

9 BEAM BRACING DETAIL  
1 1/2" = 1'-0"