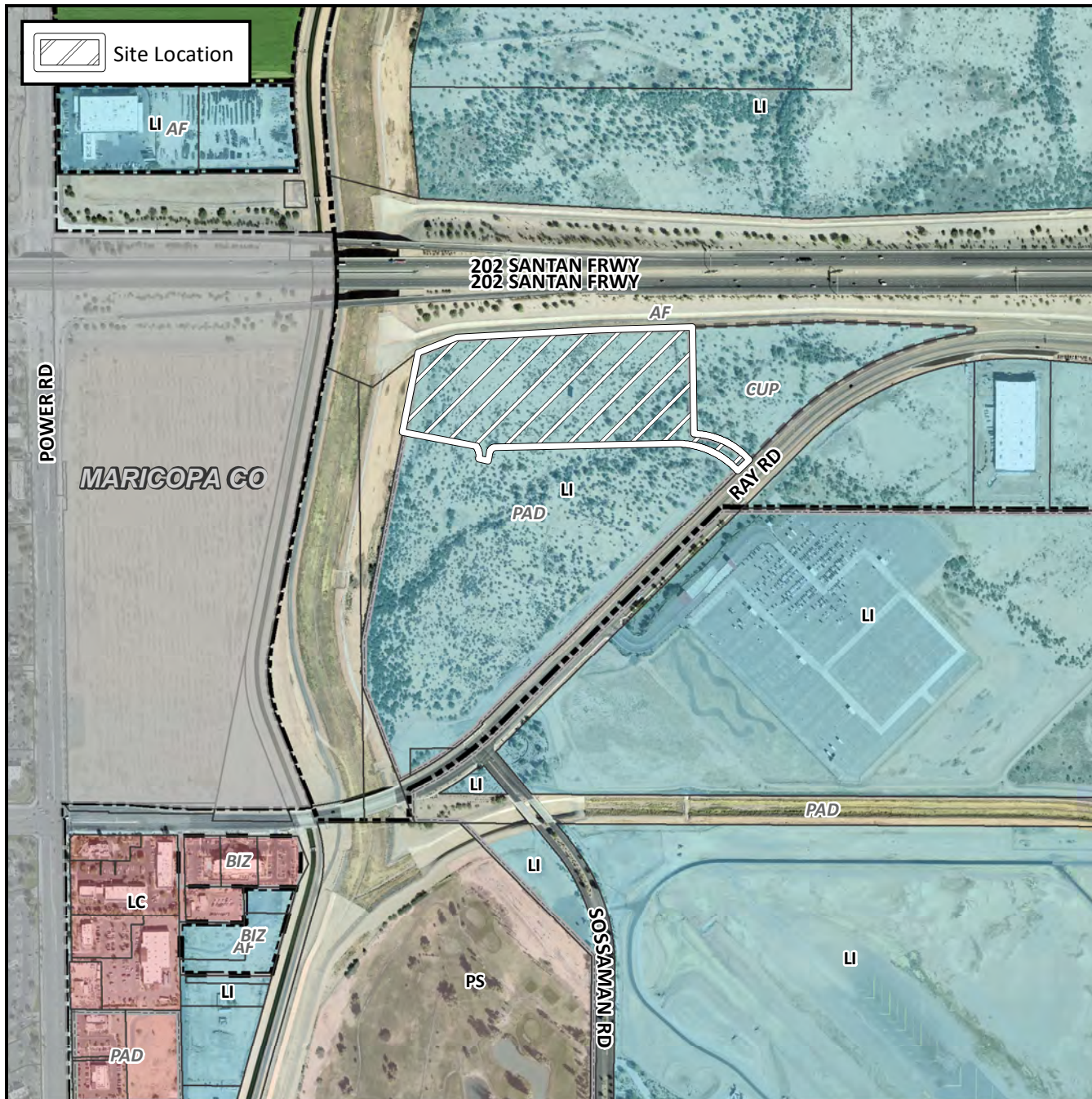


Final Plat Vicinity Map



Case Details

Project:

Ray Road Commerce Center North

Language:

District 6. The 7100 to 7300 blocks of East Ray Road (north side) Located east of Power Road on the north side of Ray Road. (16.24± acres) Phx-Mesa Gateway Airport 193, LLC, Developer; Richard E. Jones, XCL Engineering, LLC, Surveyor.

