

City Council Study Session

May 31, 2018

Presenter: John Wesley, Planning Director

Garage Size Standards

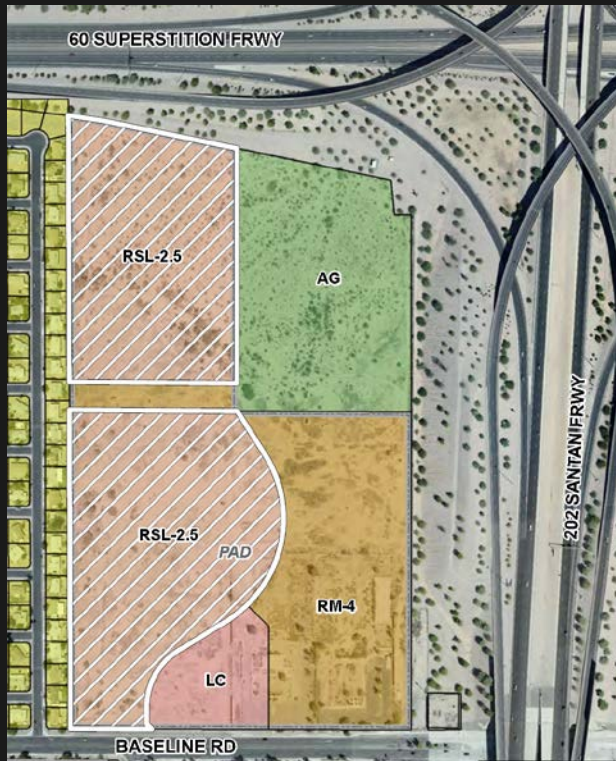
Purpose of Garage Size Standard

- Public Safety Access
 - Reduce need to park in the driveway or street
- Provide garages that are usable for parking of vehicles
- One element of a long-term viable home and neighborhood
- Provide for water heater and a limited amount of storage

Purpose of Garage Size Standard

- Garage standards become particularly important with small-lot subdivisions
 - No driveways
 - Lack of on-street parking
 - Reduced storage capabilities

Heritage Crossing

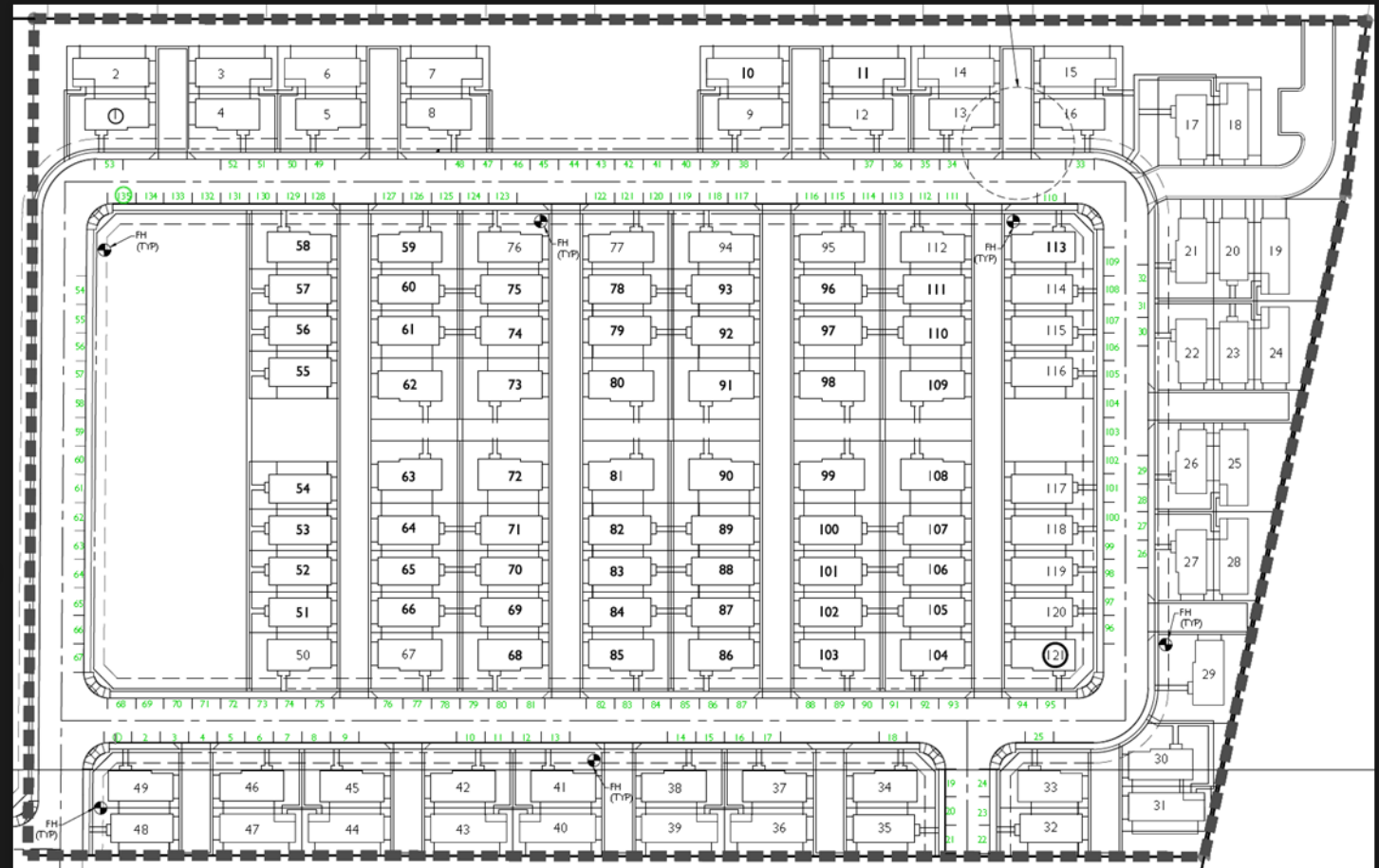


Courtyard/Cottage
Lots

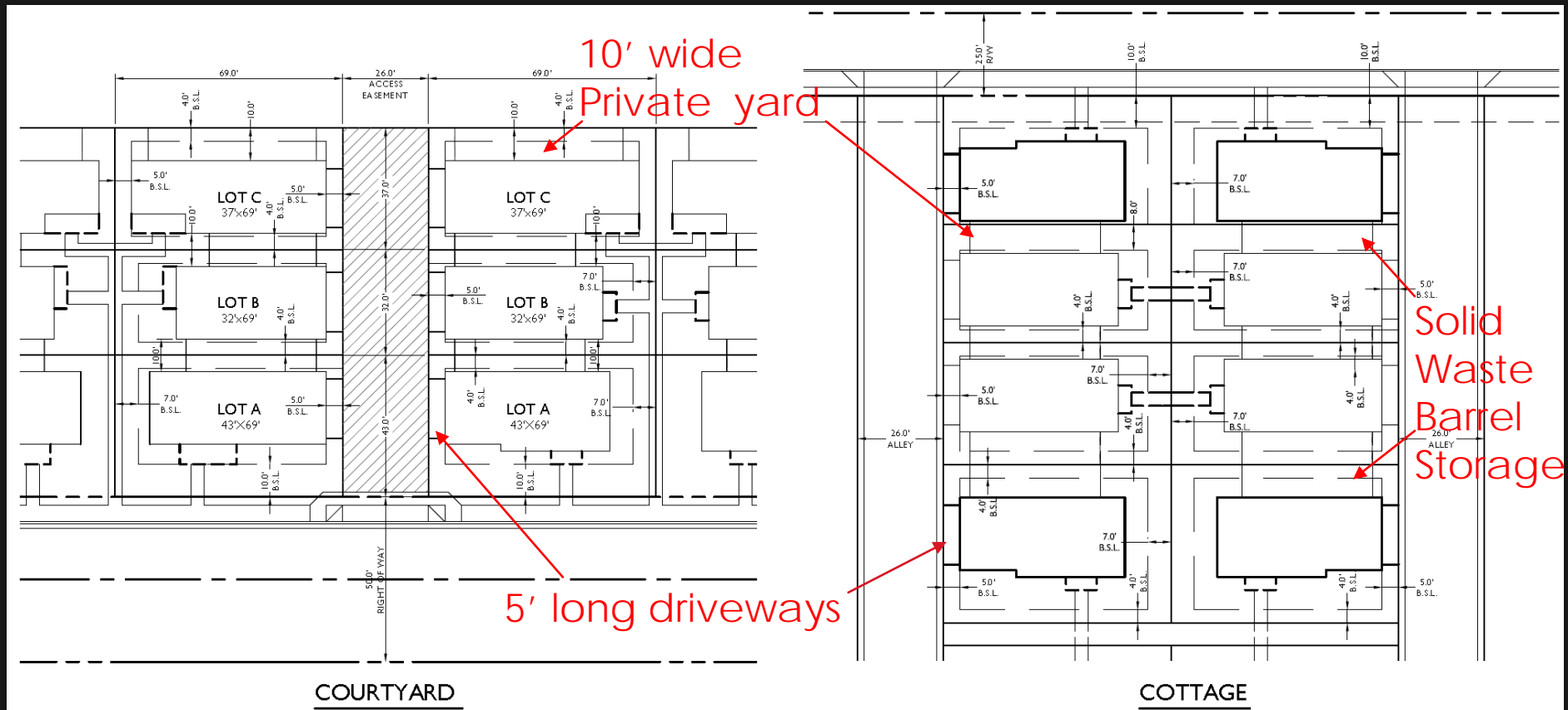
Traditional Lots

On-Street Guest Parking

- Goal: 1 per home within 150'
- 135 guest spaces shown
 - Some lost with detailed design
 - Consistent with other developments
- City standard street width, no issues anticipated

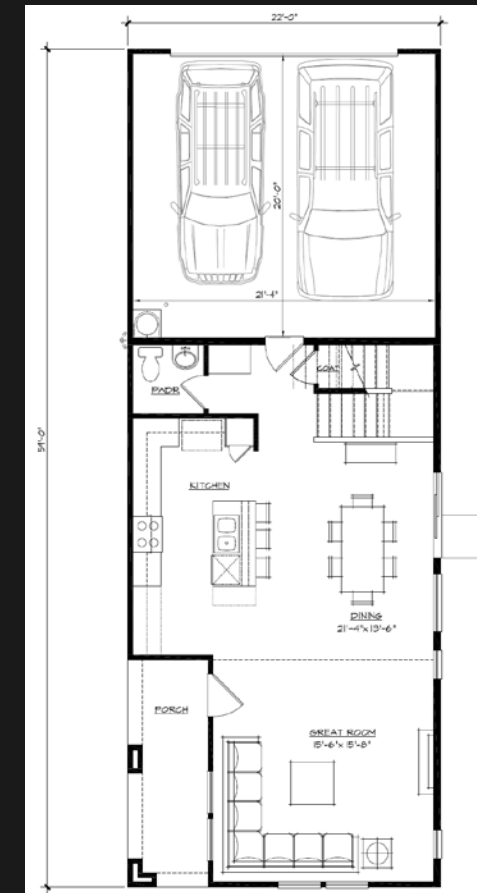
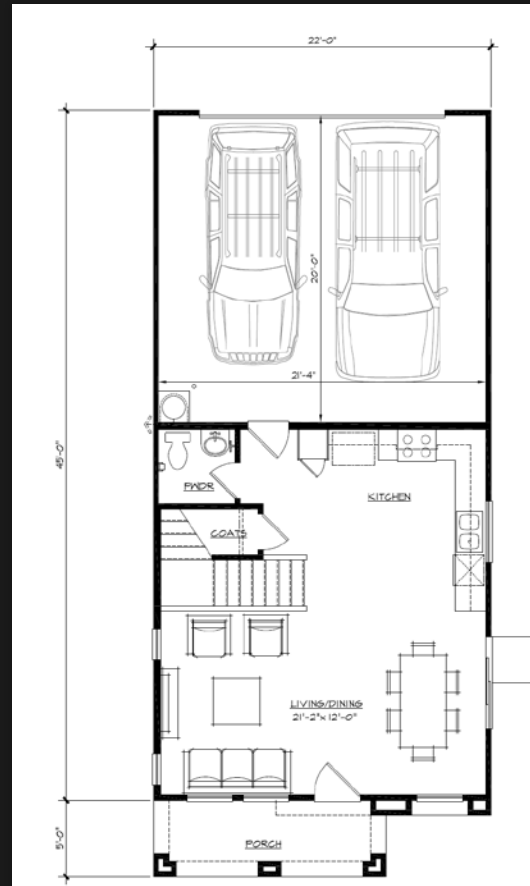
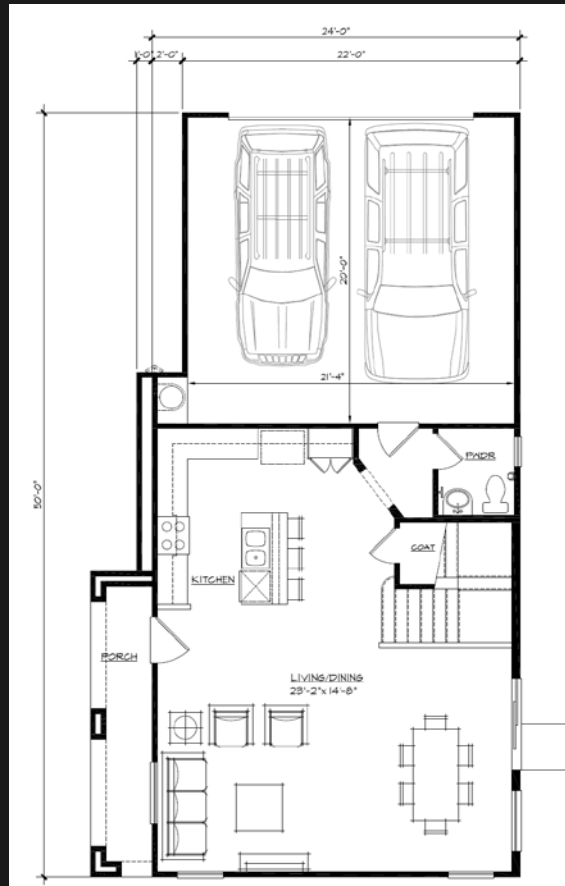


Typical Lot Layouts



Courtyard & Cottage Floor Plans

Garages: 21'-4" x 20'



Heritage Crossing Proposal

Hawes and Baseline

Garage Standards	Required per Zoning Ordinance Section 11-32-4.F	Proposed Heritage Crossing Traditional Lot (45'x 110)	Proposed Heritage Crossing Courtyard/Alley Lots (32'x 69', 37'x 69', 43'x 69')
Width	20'	19'-4" (8" reduction)	21'-4" (1'-4" increase)
Depth	22'	22'	20' (2' reduction)
Square Footage	440 ft ²	425 ft ² (15 ft ² reduction)	427 ft ² (13 ft ² reduction)

Future Small Lot Subdivision Applications

- More detailed discussion at pre-submittal meetings on certain development standards
i.e. create awareness on garage sizes, resident and guest parking, solid waste collection, building design etc.
- Product dimensions will be required earlier in the process at subdivision pre-platting
- Establish options for administrative reductions if can't meet minimum garage standards such as:
 - Builder provided storage/shelving in the interior or exterior
 - Placement of water heater and solid waste barrels
 - Length of driveway
 - Amount and location of additional parking
 - Overall width vs. depth of the garage

Questions?